
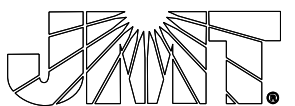
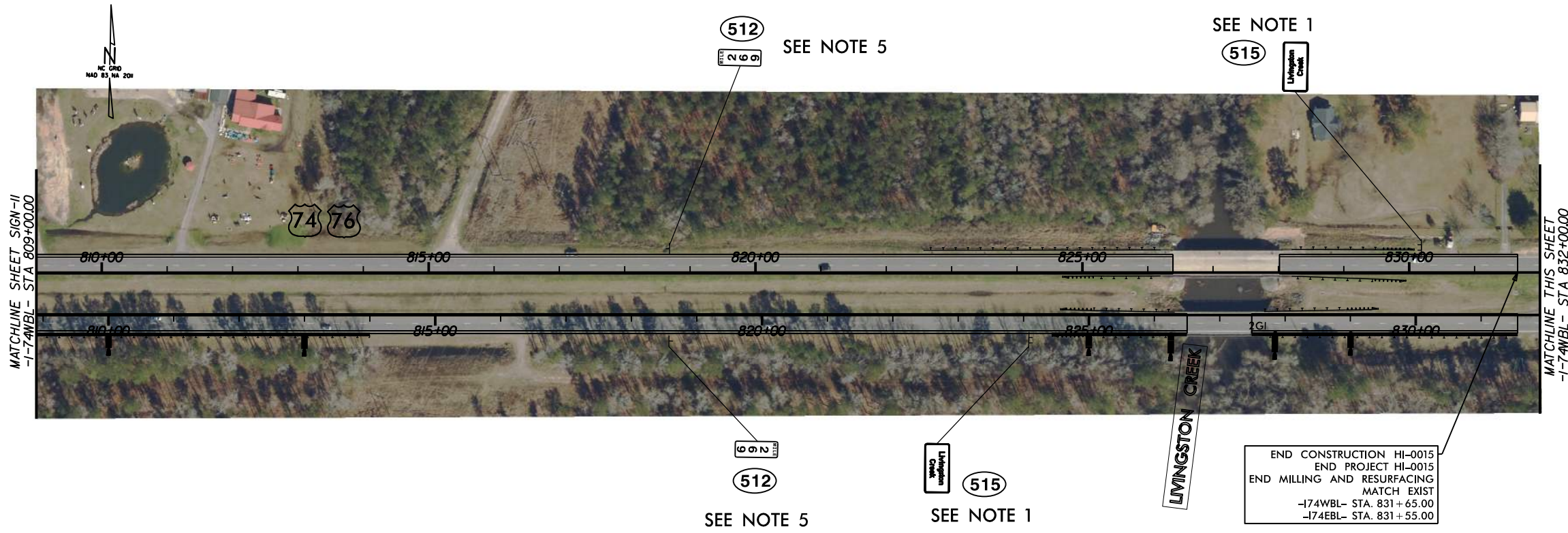


8/17/99

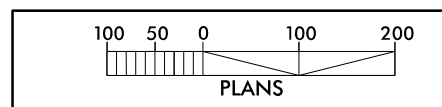
PROJECT REFERENCE NO. HI-0015	SHEET NO. SIGN-12
DocuSigned by: <i>Richard L. Lasher</i> CAE5DBC928E4E3 11/17/2023	
	
	



END CONSTRUCTION HI-0015  
 END PROJECT HI-0015  
 END MILLING AND RESURFACING  
 MATCH EXIST  
 -174WBL- STA. 831+65.00  
 -174EBL- STA. 831+55.00



- PROJECT NOTES**
- DISPOSAL OF SIGN AND SIGN ERECTION, ALL SIGNS TYPE D, E AND F
  - SIGN ERECTION, TYPE E
  - SIGN ERECTION, TYPE F
  - DISPOSAL OF SIGN, ALL SIGNS TYPE D, E AND F
  - DISPOSAL OF SIGN AND SIGN ERECTION, MILE MARKERS



11/17/2023 10:20:33 900765\_002\_HI-0015\_US\_74\_From\_E:\CADD\HI-0015\_Traffic\_Signing\HI-0015\_SIGN\_12.dgn