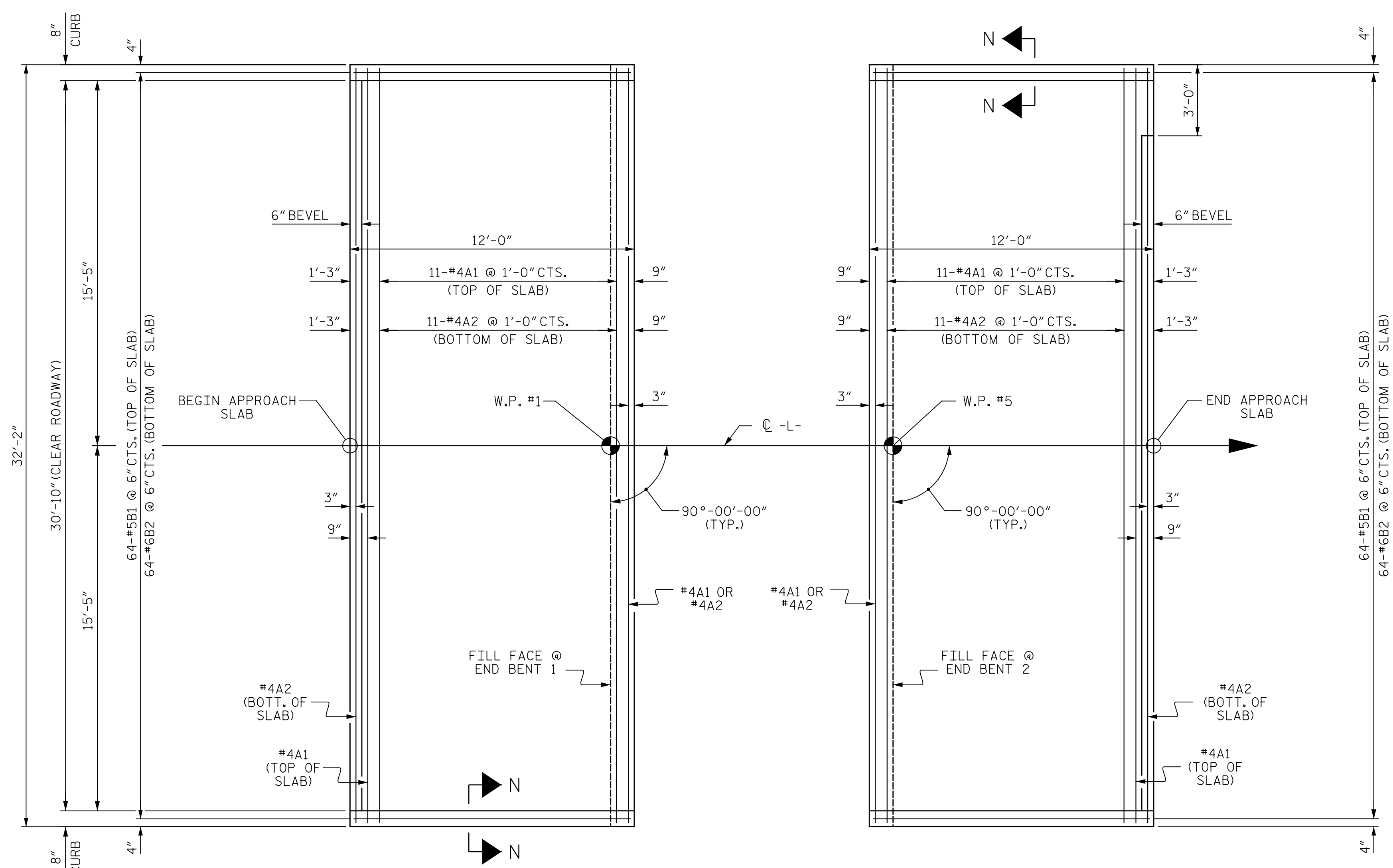


Pen Table: R:\cecad\Plotting\Structures\NCDOT\Pen Tables\ICE_NC_Struct.tbl
 Print Driver: R:\cecad\Plotting\Structures\NCDOT\Plot Config\22x34_Plot_ICC.pltcfgr
 Plot Date: 11/14/2023 4:07:22 PM
 User Name: jlm.austin
 File Name: R:\Projects\19-55.01_SML.B.6046_SRI917_Over_Long_Creek\NCDOT\Structures\Drawings\Find\401_025.B6046_SML.AS1.830102.dgn



PLAN @ END BENT 1 PLAN @ END BENT 2
 DIMENSIONS SHOWN ARE TYPICAL FOR BOTH APPROACH SLABS

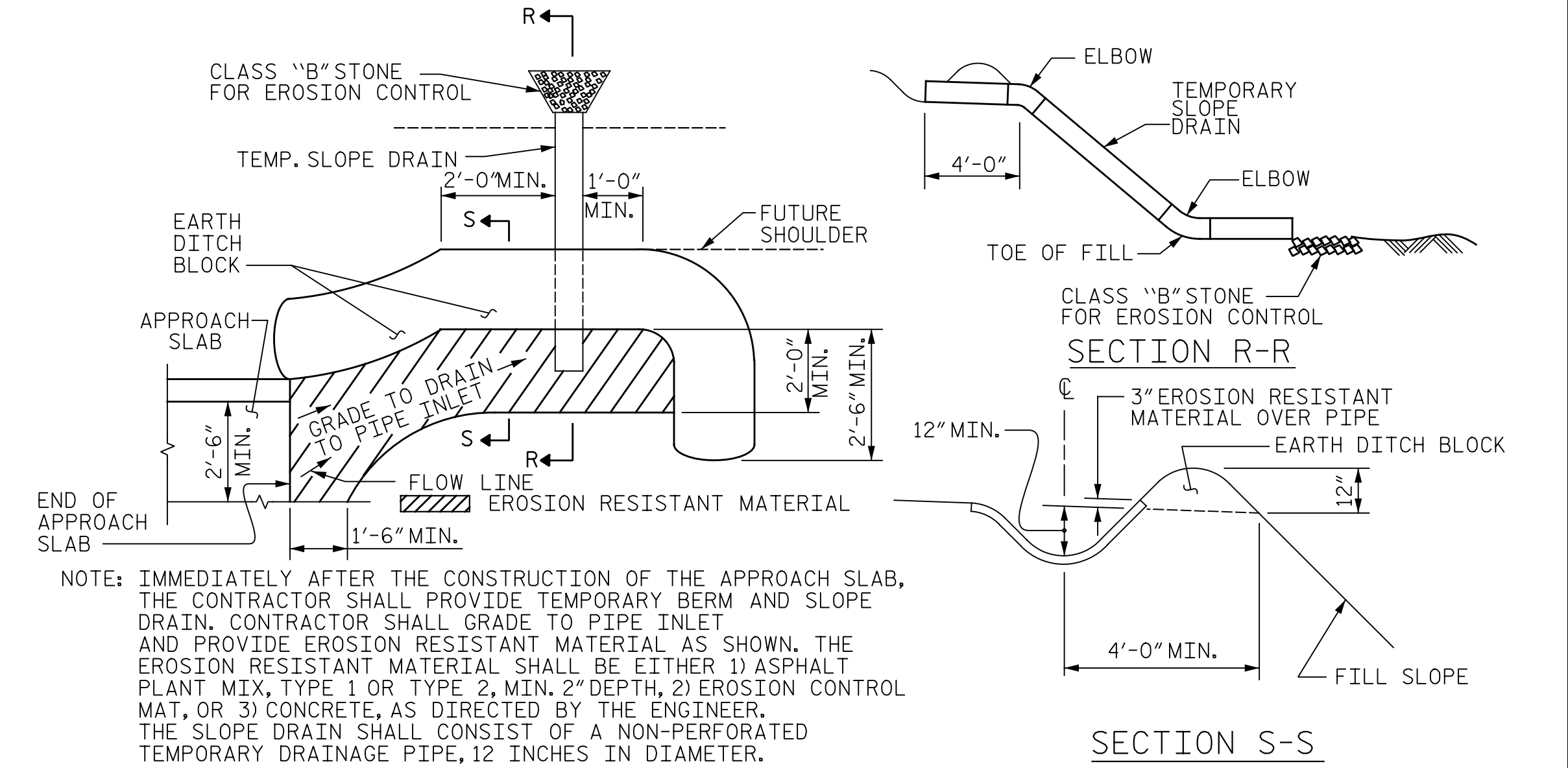
NOTES

FOR BRIDGE APPROACH FILL, SEE ROADWAY PLANS.

AREA BETWEEN THE WINGWALL AND APPROACH SLAB SHALL BE GRADED TO DRAIN THE WATER AWAY FROM THE FILL FACE OF THE BRIDGE AND SHALL BE PAVED. SEE ROADWAY PLANS.

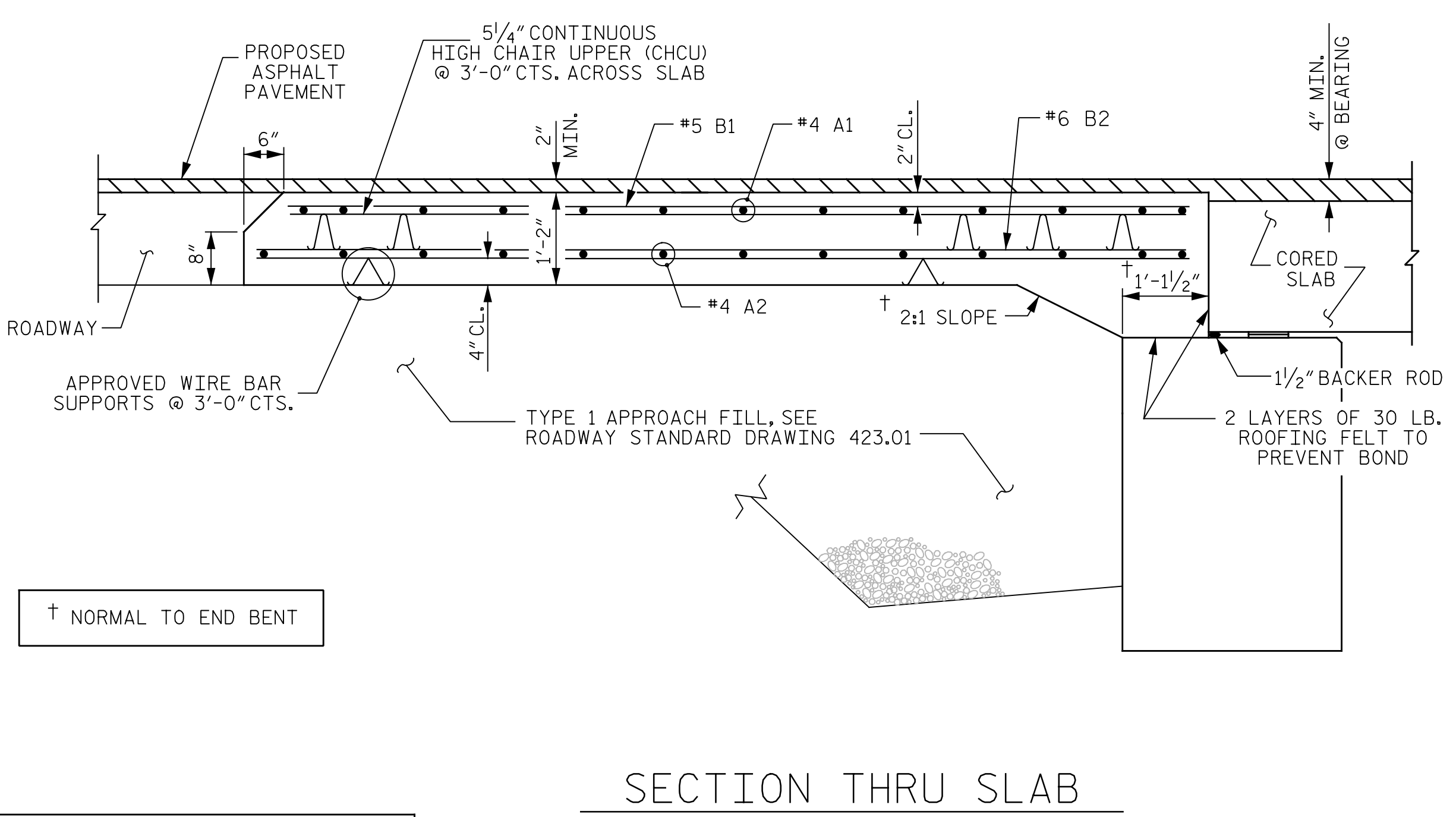
APPROACH SLAB GROOVING IS NOT REQUIRED.

| BILL OF MATERIAL | | | | | |
|----------------------------------|-----|------|------|---------|--------|
| APPROACH SLAB AT E.B. 1 | | | | | |
| BAR | NO. | SIZE | TYPE | LENGTH | WEIGHT |
| *A1 | 13 | #4 | STR | 31'-10" | 276 |
| A2 | 13 | #4 | STR | 31'-10" | 276 |
| *B1 | 64 | #5 | STR | 11'-2" | 745 |
| B2 | 64 | #6 | STR | 11'-8" | 1121 |
| REINFORCING STEEL | | | | LBS. | 1397 |
| * EPOXY COATED REINFORCING STEEL | | | | LBS. | 1021 |
| CLASS AA CONCRETE | | | | C. Y. | 19.5 |
| APPROACH SLAB AT E.B. 2 | | | | | |
| BAR | NO. | SIZE | TYPE | LENGTH | WEIGHT |
| *A1 | 13 | #4 | STR | 31'-10" | 276 |
| A2 | 13 | #4 | STR | 31'-10" | 276 |
| *B1 | 64 | #5 | STR | 11'-2" | 745 |
| B2 | 64 | #6 | STR | 11'-8" | 1121 |
| REINFORCING STEEL | | | | LBS. | 1397 |
| * EPOXY COATED REINFORCING STEEL | | | | LBS. | 1021 |
| CLASS AA CONCRETE | | | | C. Y. | 19.5 |



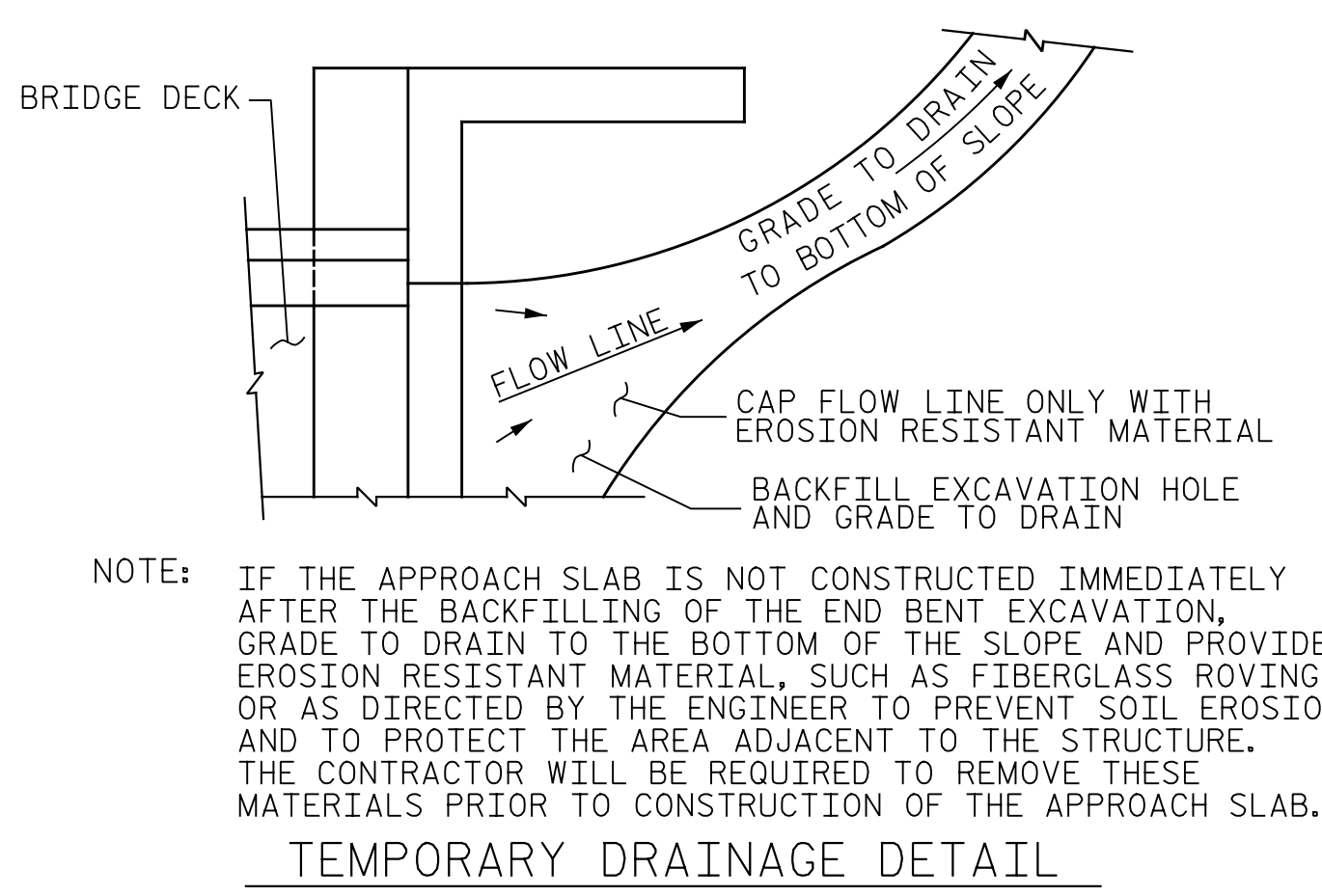
PLAN VIEW
 TEMPORARY BERM AND SLOPE DRAIN DETAILS
 (TO BE USED WHEN SHOULDER BERM GUTTER IS REQUIRED)

PROJECT NO. B-6046
STANLY COUNTY
 STATION: 17+66.00 -L-

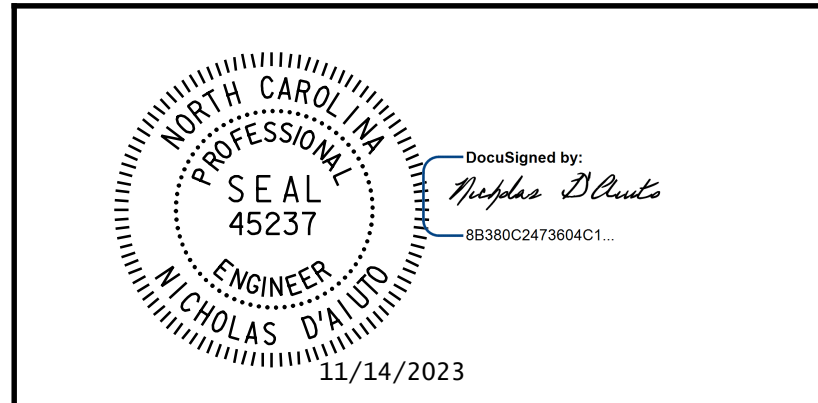


SECTION THRU SLAB

| SPlice LENGTHS | | |
|----------------|--------------|----------|
| BAR SIZE | EPOXY COATED | UNCOATED |
| #4 | 1'-11" | 1'-7" |
| #5 | 2'-5" | 2'-0" |
| #6 | 3'-7" | 2'-5" |



NOTE: IF THE APPROACH SLAB IS NOT CONSTRUCTED IMMEDIATELY AFTER THE BACKFILLING OF THE END BENT EXCAVATION, GRADE TO DRAIN TO THE BOTTOM OF THE SLOPE AND PROVIDE EROSION RESISTANT MATERIAL, SUCH AS FIBERGLASS ROVING OR AS DIRECTED BY THE ENGINEER TO PREVENT SOIL EROSION AND TO PROTECT THE AREA ADJACENT TO THE STRUCTURE. THE CONTRACTOR WILL BE REQUIRED TO REMOVE THESE MATERIALS PRIOR TO CONSTRUCTION OF THE APPROACH SLAB.



ICE of Carolinas, PLLC
 4505 Falls of Neuse Road, Suite 110
 Raleigh, North Carolina 27609
 Phone: 919-822-0333
 License #: P-9999

| STATE OF NORTH CAROLINA DEPARTMENT OF TRANSPORTATION RALEIGH | | | | | |
|--|-----|-------|-----|-----|-------|
| BRIDGE APPROACH SLAB FOR PRESTRESSED CONCRETE | | | | | |
| CORED SLAB UNIT (SUB-REGIONAL TIER) 90° SKEW | | | | | |
| REVISIONS | | | | | |
| NO. | BY: | DATE: | NO. | BY: | DATE: |
| 1 | | | 3 | | |
| 2 | | | 4 | | |

DRAWN BY: J. N. AUSTIN DATE: 8-10-22
 CHECKED BY: N. D'AIUTO DATE: 8-12-22
 DESIGN E.O.R.: N. D'AIUTO DATE: 1-4-23

**DOCUMENT NOT CONSIDERED FINAL
 UNLESS ALL SIGNATURES COMPLETED**

SHEET NO. S-24
 TOTAL SHEETS 24