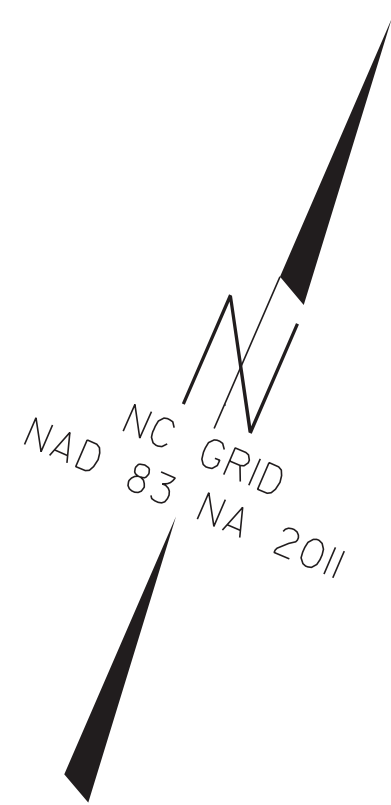
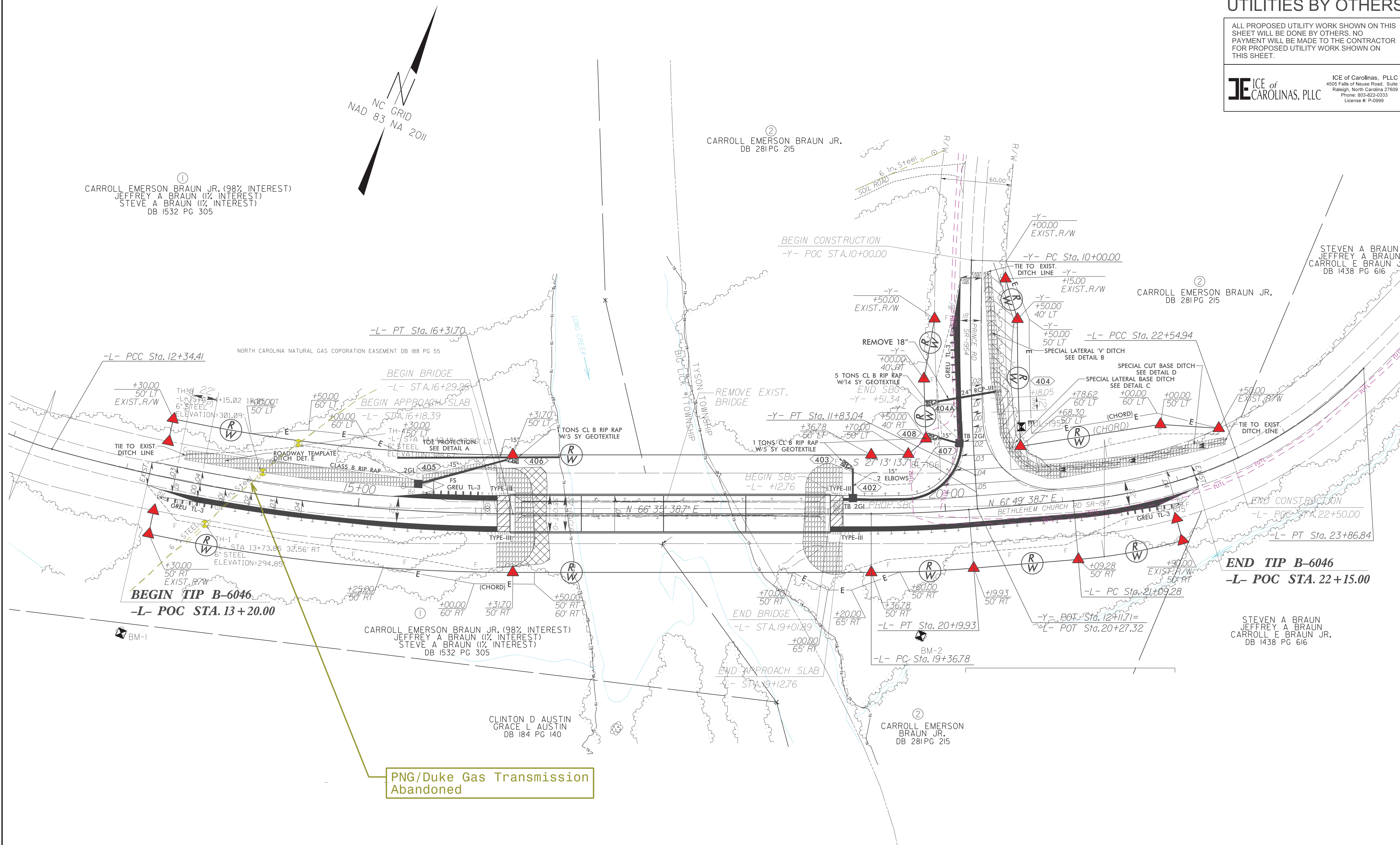


8/17/99
 10/16/2023
 B-6046_U4_PSH.dgn
 teresa.mccallum



①
 CARROLL EMERSON BRAUN JR. (98% INTEREST)
 JEFFREY A BRAUN (1% INTEREST)
 STEVE A BRAUN (1% INTEREST)
 DB 1532 PG 305

②
 CARROLL EMERSON BRAUN JR.
 DB 281 PG 215

②
 CARROLL EMERSON BRAUN JR.
 DB 281 PG 215

STEVEN A BRAUN
 JEFFREY A BRAUN
 CARROLL E BRAUN JR.
 DB 1438 PG 616

①
 CARROLL EMERSON BRAUN JR. (98% INTEREST)
 JEFFREY A BRAUN (1% INTEREST)
 STEVE A BRAUN (1% INTEREST)
 DB 1532 PG 305

CLINTON D AUSTIN
 GRACE L AUSTIN
 DB 184 PG 140

②
 CARROLL EMERSON
 BRAUN JR.
 DB 281 PG 215

STEVEN A BRAUN
 JEFFREY A BRAUN
 CARROLL E BRAUN JR.
 DB 1438 PG 616

PNG/Duke Gas Transmission
 Abandoned

Point	NORTHING	EASTING	-L- Station	NOTES
TH1	538,619.68	1,623,676.80	13+80.48	Surface ELEV 298.58FT Top of Pipe ELEV 294.85FT
TH2	538,649.76	1,623,689.72	14+00.00	In road
TH3	538,675.20	1,623,701.06	14+17.48	Surface ELEV 303.87FT Top of Pipe ELEV 301.09FT
TH4	538,697.33	1,623,712.63	14+34.83	Surface ELEV 311.29FT Top of Pipe ELEV 308.67FT