

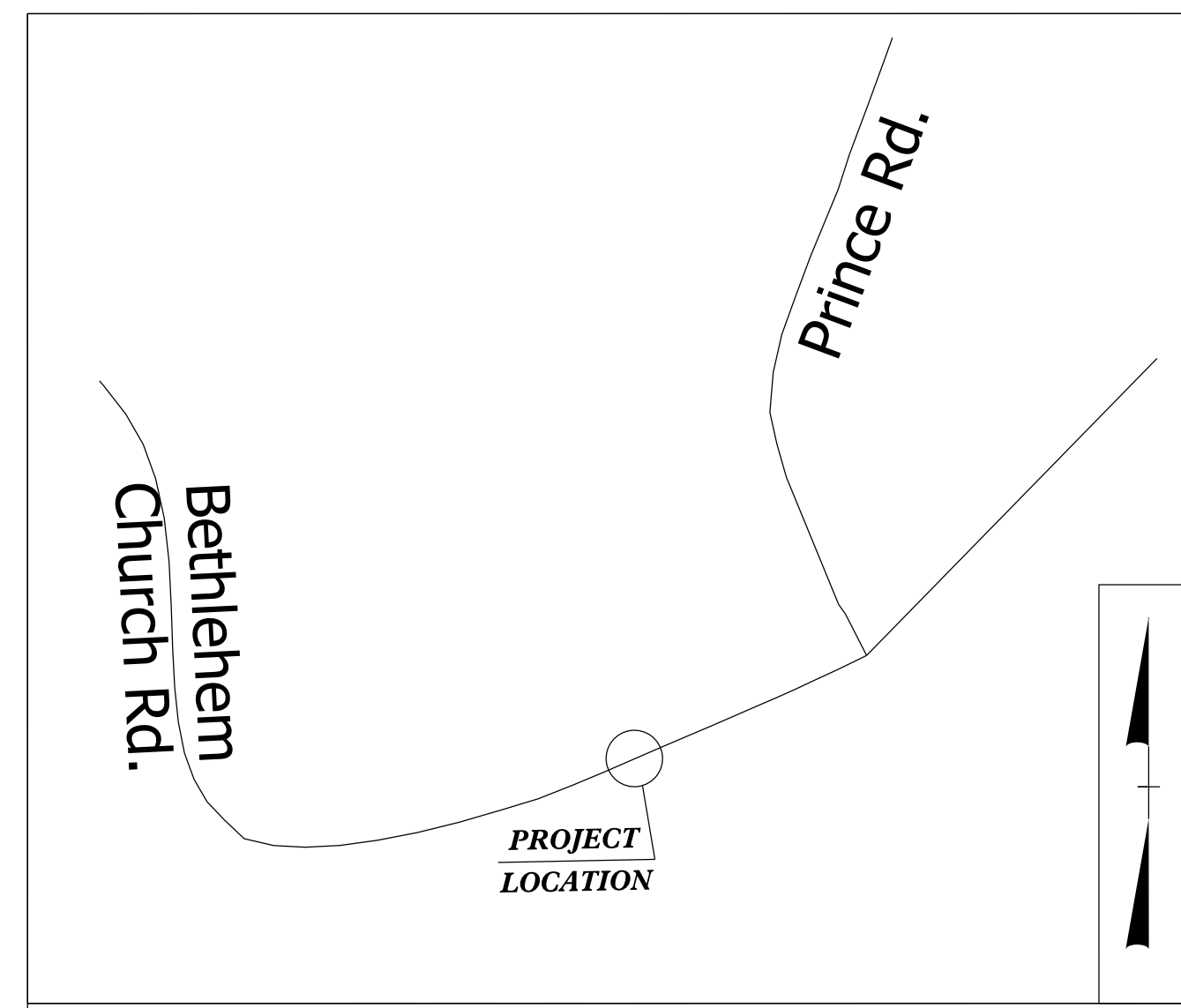
TIP PROJECT: B-6046

STATE	STATE PROJECT REFERENCE NO.	SHEET NO.	TOTAL SHEETS
N.C.	B-6046	RW01	

STATE OF NORTH CAROLINA
DIVISION OF HIGHWAYS

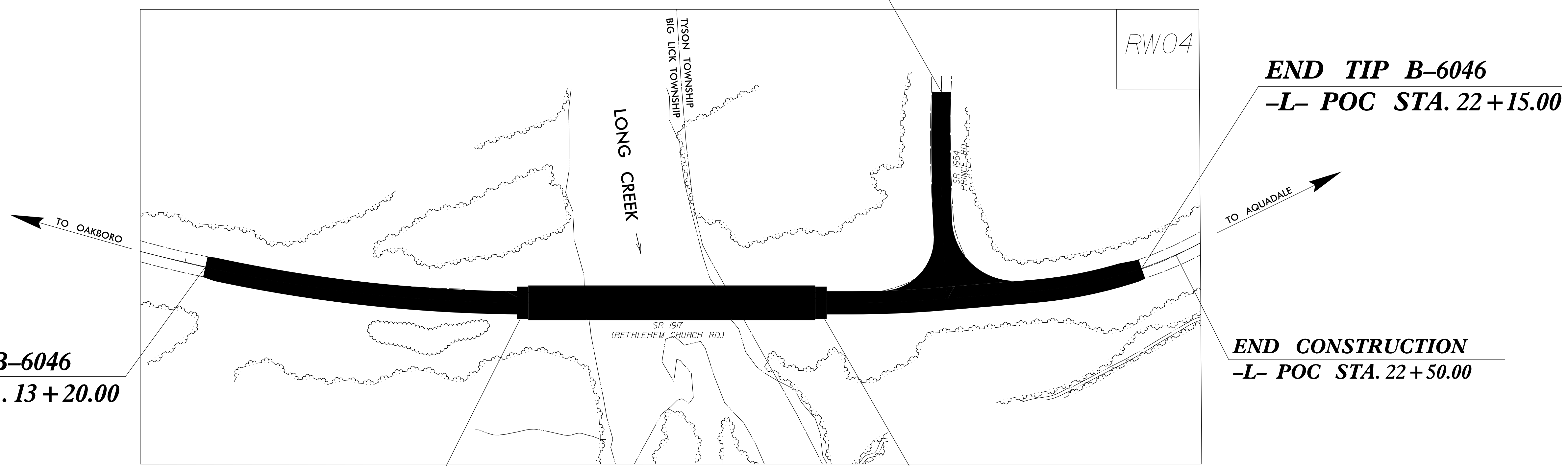
SURVEY CONTROL, EXISTING CENTERLINES,
RIGHT OF WAY, EASEMENTS AND PROPERTY TIES

STANLY COUNTY



VICINITY MAP
(Not to Scale)

BEGIN CONSTRUCTION
-Y- POC STA. 10+00.00



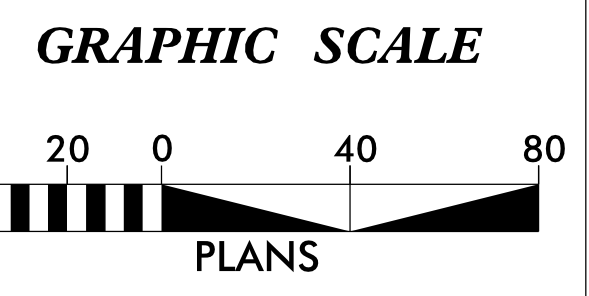
BEGIN TIP B-6046
-L- POC STA. 13+20.00

END TIP B-6046
-L- POC STA. 22+15.00

BEGIN BRIDGE
-L- STA. 16+29.26

END BRIDGE
-L- STA. 19+01.89

NOT TO SCALE



DATUM DESCRIPTION
THE LOCALIZED COORDINATE SYSTEM DEVELOPED FOR THIS PROJECT IS BASED ON THE STATE PLANE COORDINATES ESTABLISHED BY NCDOT FOR MONUMENT "B6046-1" WITH NAD 83/2011 STATE PLANE GRID COORDINATES OF NORTHING: 540,471.615 (ft) EASTING: 1,626,587.533 (ft) ELEVATION: 505.886(ft)
THE AVERAGE COMBINED GRID FACTOR USED ON THIS PROJECT (GROUND TO GRID) IS: 0.999853245
THE N.C. LAMBERT GRID BEARING AND LOCALIZED HORIZONTAL GROUND DISTANCE FROM "B6046-1" TO -L- STATION 23+86.84 IS S 56°51'23" W 2463.82 (ft)
ALL LINEAR DIMENSIONS ARE LOCALIZED HORIZONTAL DISTANCES
VERTICAL DATUM USED IS NAVD 88

Prepared in the Office of:



Dewberry Engineers Inc.
9300 Harris Corner Pkwy - Suite 220
Charlotte, NC 28269
Phone: 704-509-9918
Fax: 704-509-9927
www.dewberry.com
NCBELS #F-6929

2018 STANDARD SPECIFICATIONS

RIGHT OF WAY DATE:
04/01/22

LETTING DATE:
12/2023

PROFESSIONAL LAND SURVEYOR



DocuSigned by:
Gavin Proffitt, PLS
AD48B3C3898A4C7

Date: 7/5/2022

