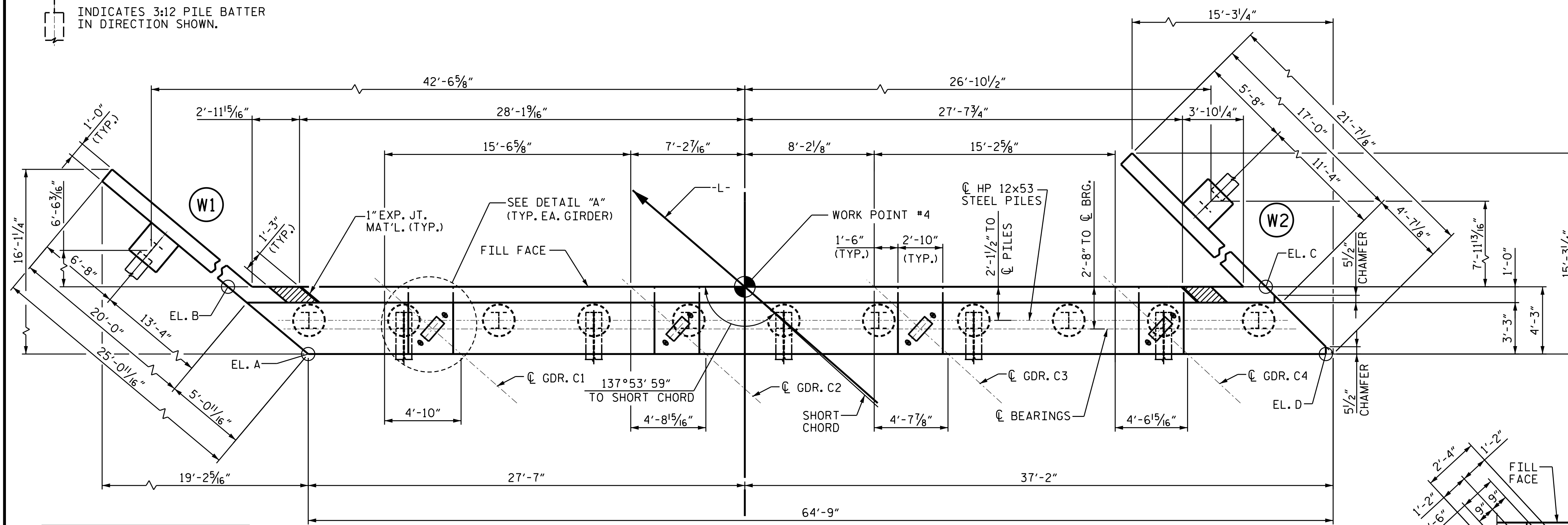


INDICATES 3:12 PILE BATTER  
IN DIRECTION SHOWN.



PLAN

CAP ELEVATIONS	
POINTS	BOTTOM OF CAP
A	2029.23
B	2029.02
C	2031.71
D	2031.88

**NOTES :**

STIRRUPS IN CAP MAY BE SHIFTED AS NECESSARY TO CLEAR ANCHOR BOLTS.

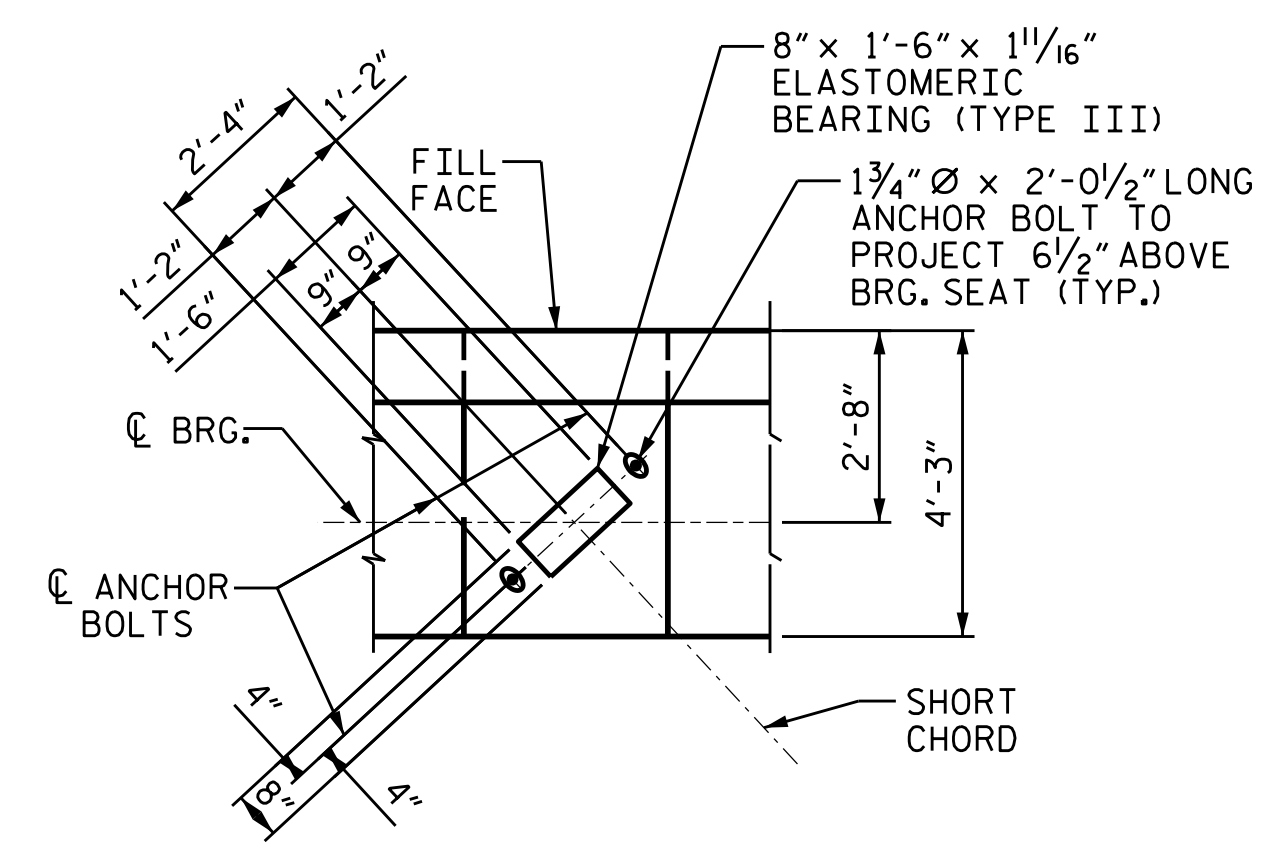
FOR PILE SPLICE DETAILS, SEE SHEET 4 OF 4.

BACKWALL SHALL BE PLACED BEFORE APPLYING THE EPOXY PROTECTIVE COATING.

THE TOP SURFACE AREAS OF THE END BENT CAP SHALL BE CURED IN ACCORDANCE WITH THE STANDARD SPECIFICATIONS EXCEPT THAT THE MEMBRANE CURING COMPOUND METHOD SHALL NOT BE USED.

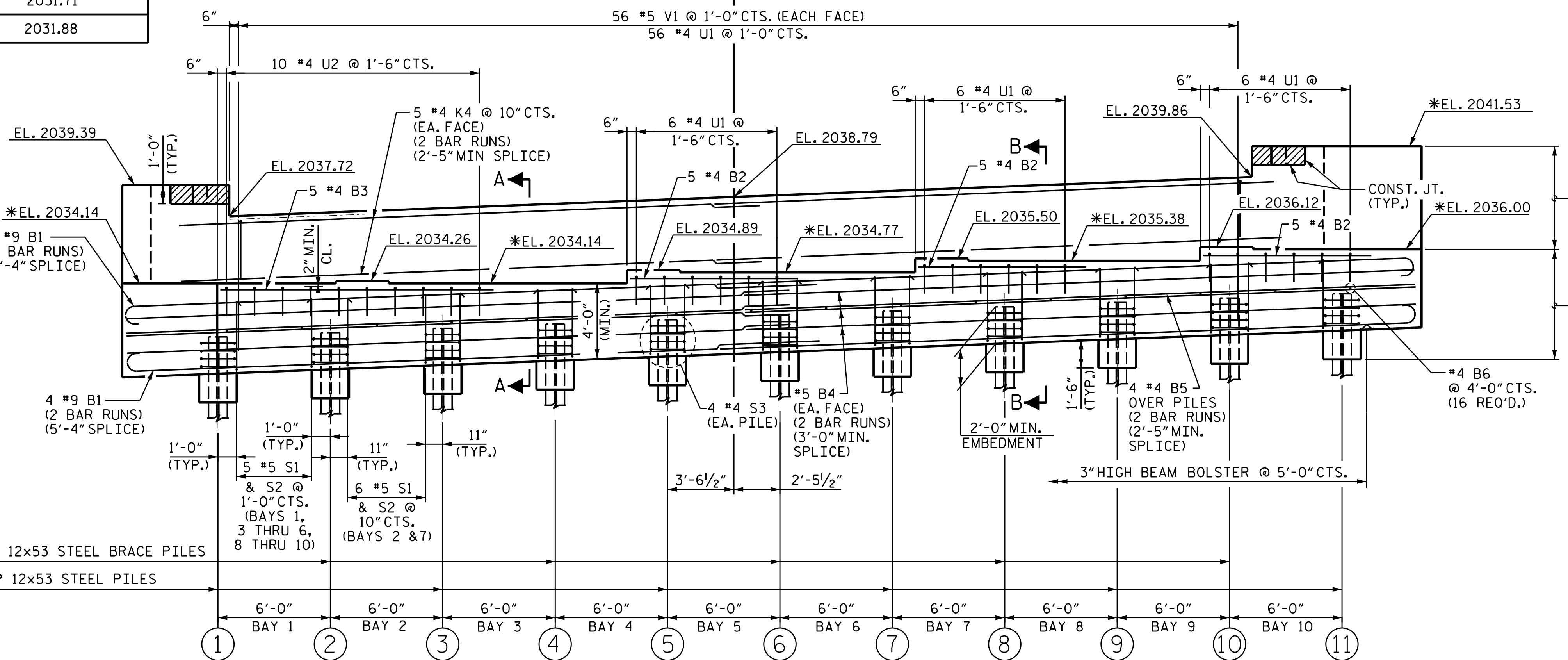
THE TOP SURFACE OF THE END BENT CAP EXCEPT THE BRIDGE SEAT BUILDUPS SHALL BE SLOPED TRANSVERSELY FROM THE FILL FACE TO THE BACK FACE AT THE RATE OF 2%.

THE CONCRETE IN THE SHADED AREA OF THE WING SHALL BE POURED AFTER THE PARAPET IS POURED IF SLIP FORMING IS USED.



DETAIL A

TOP OF PILE ELEVATIONS	
①	2031.27
②	2031.51
③	2031.76
④	2032.00
⑤	2032.25
⑥	2032.50
⑦	2032.74
⑧	2032.99
⑨	2033.23
⑩	2033.48
⑪	2033.73



ELEVATION

POUR #2  
BACKWALL &  
UPPER PART  
OF WINGS

POUR #1  
CAP, LOWER  
PART OF WINGS &  
CONCRETE COLLARS

PROJECT NO. 17BP.14.R.204  
JACKSON COUNTY  
STATION: 24+58.00-L-

SHEET 1 OF 4

STATE OF NORTH CAROLINA  
DEPARTMENT OF TRANSPORTATION  
RALEIGH

PROFESSIONAL ENGINEER  
SEAL 20125  
MARSHALL G. CHESTNUT, JR.  
MARSHALL G. CHESTNUT, JR.  
SFBCC2F34MD0413...

11/15/2023 | 7:42 AM EST

DOCUMENT NOT CONSIDERED FINAL  
UNLESS ALL SIGNATURES COMPLETED

TGS ENGINEERS  
201 W. MARION ST STE 200  
SHELBY, NC 28150  
PH (704) 476-0003  
CORP. LICENSE NO.: C-0275

REVISIONS		SHEET NO.
NO.	DATE	
1		S-39
2		
		TOTAL SHEETS
		47

DRAWN BY : NMW DATE : 7/22  
CHECKED BY : MGC DATE : 10/22  
DESIGN ENGINEER OF RECORD : ZCS DATE : 1/23

(WINGS NOT SHOWN FOR CLARITY)  
FOR SECTION A-A AND B-B SEE SHEET 4 OF 4  
\*FOR LOCATION OF ELEVATION BETWEEN BRIDGE SEAT BUILD-UPS, SEE TYPICAL SECTION