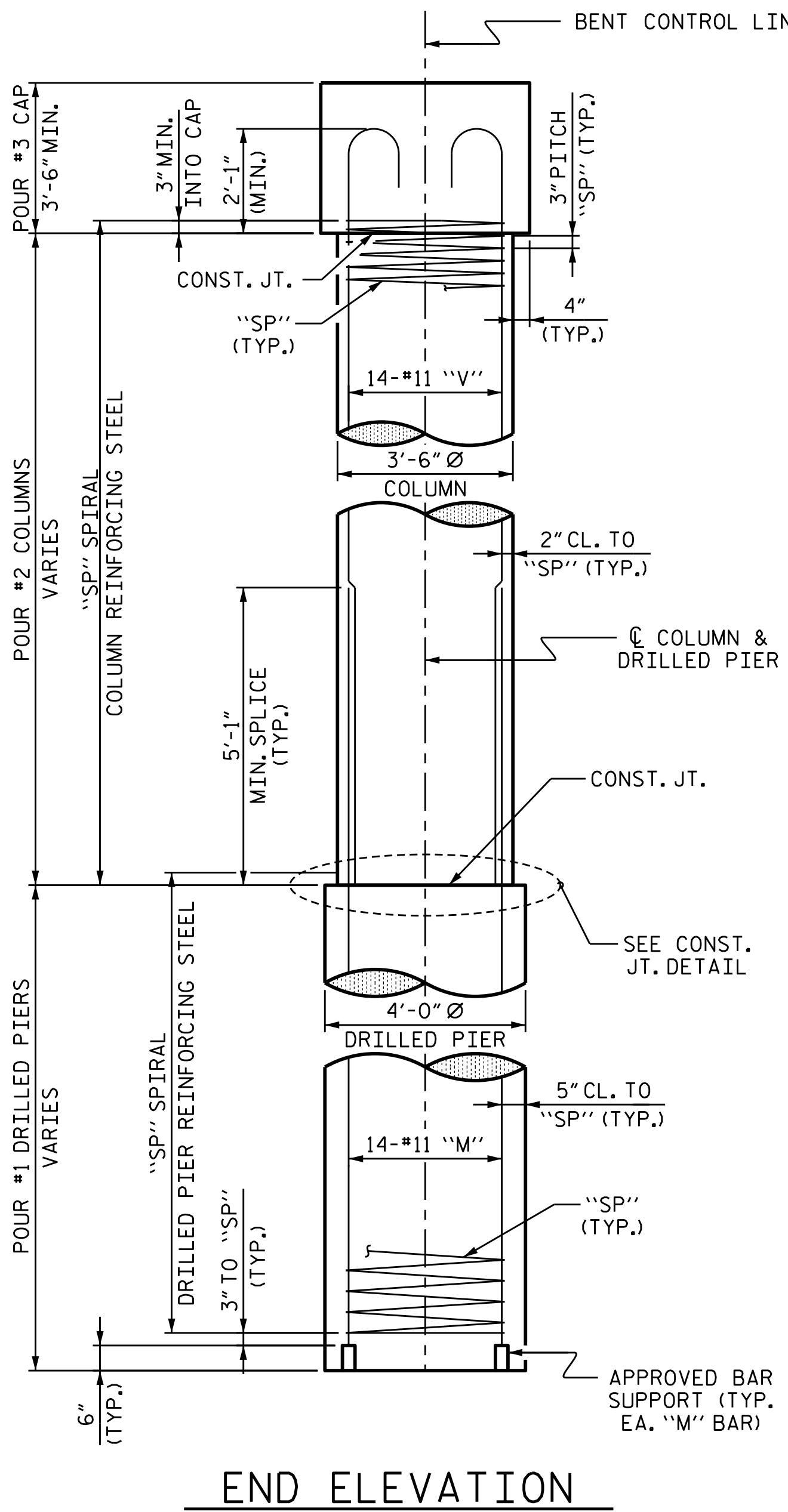
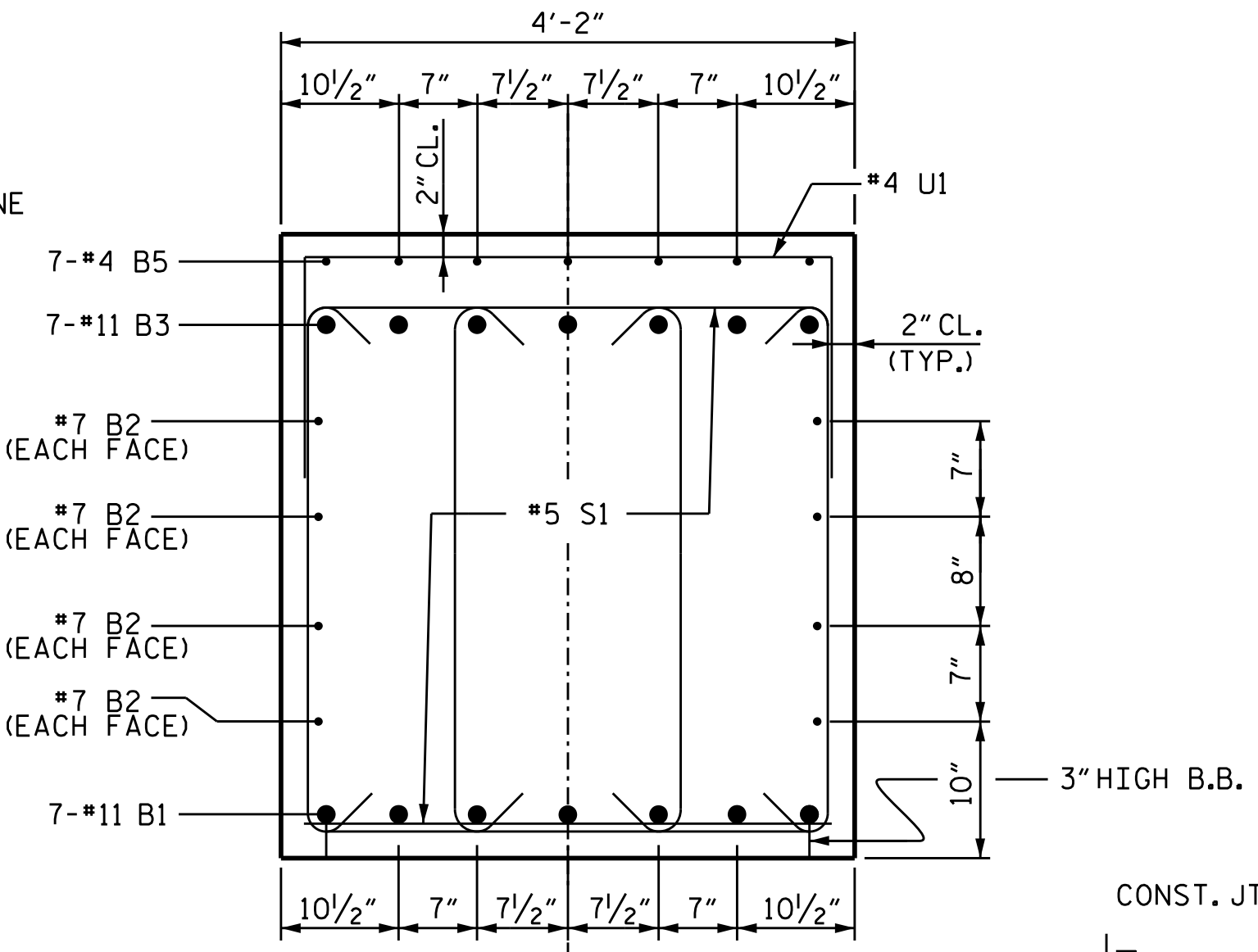


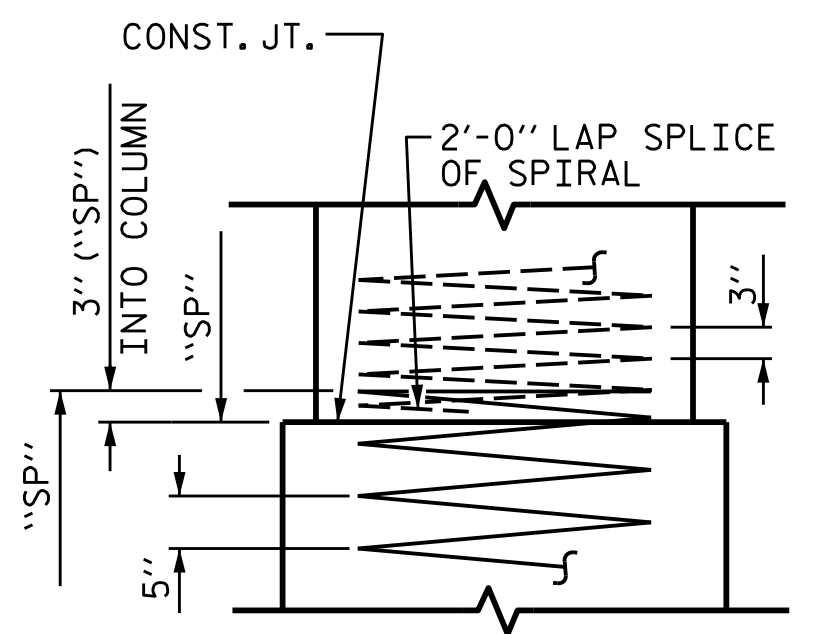
PLAN OF DRILLED PIERS & COLUMNS



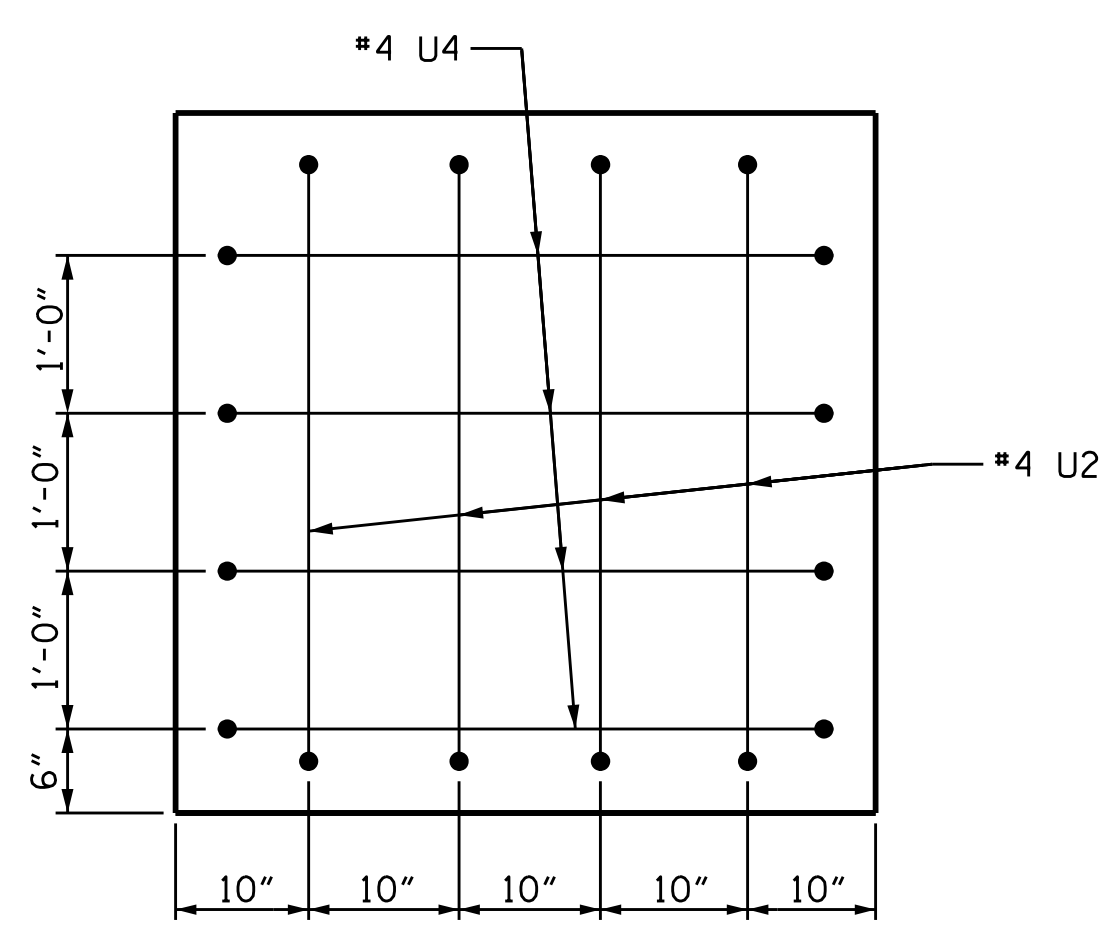
END ELEVATION



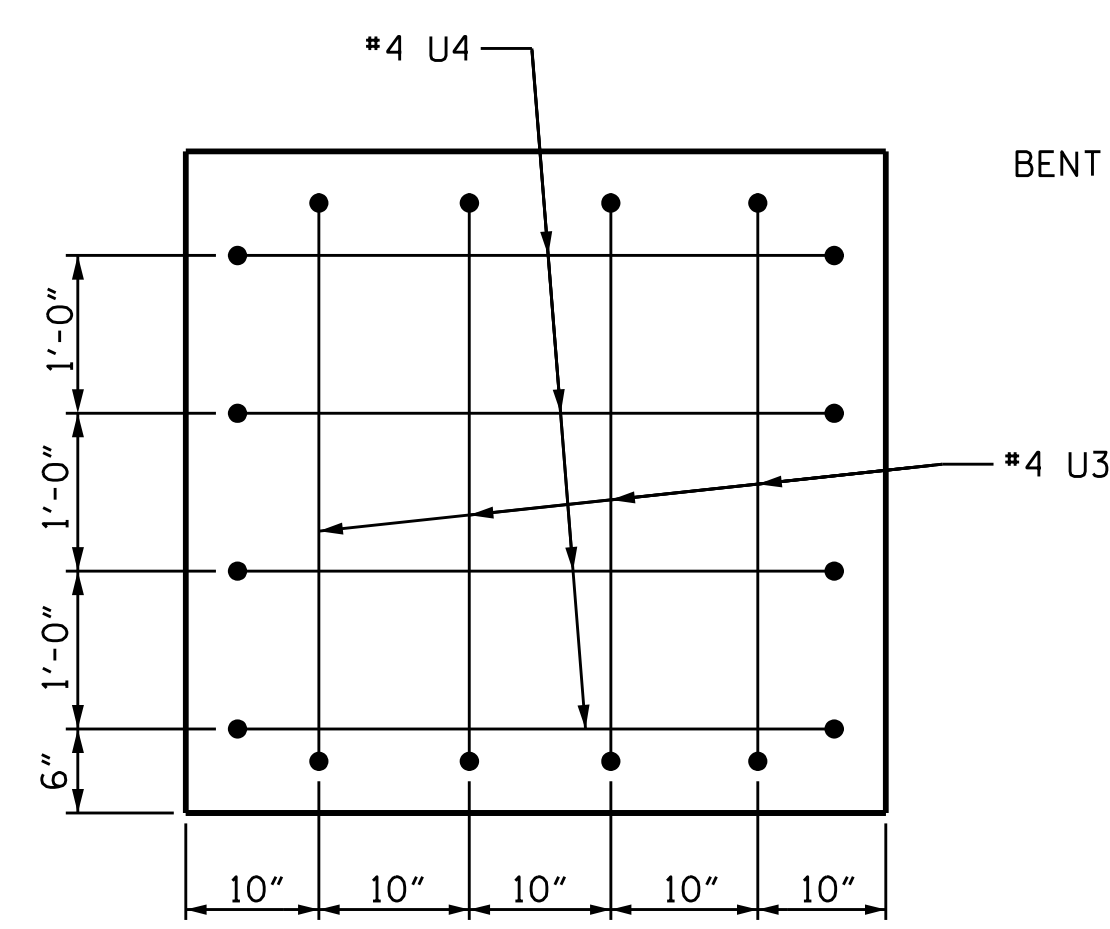
SECTION A-A



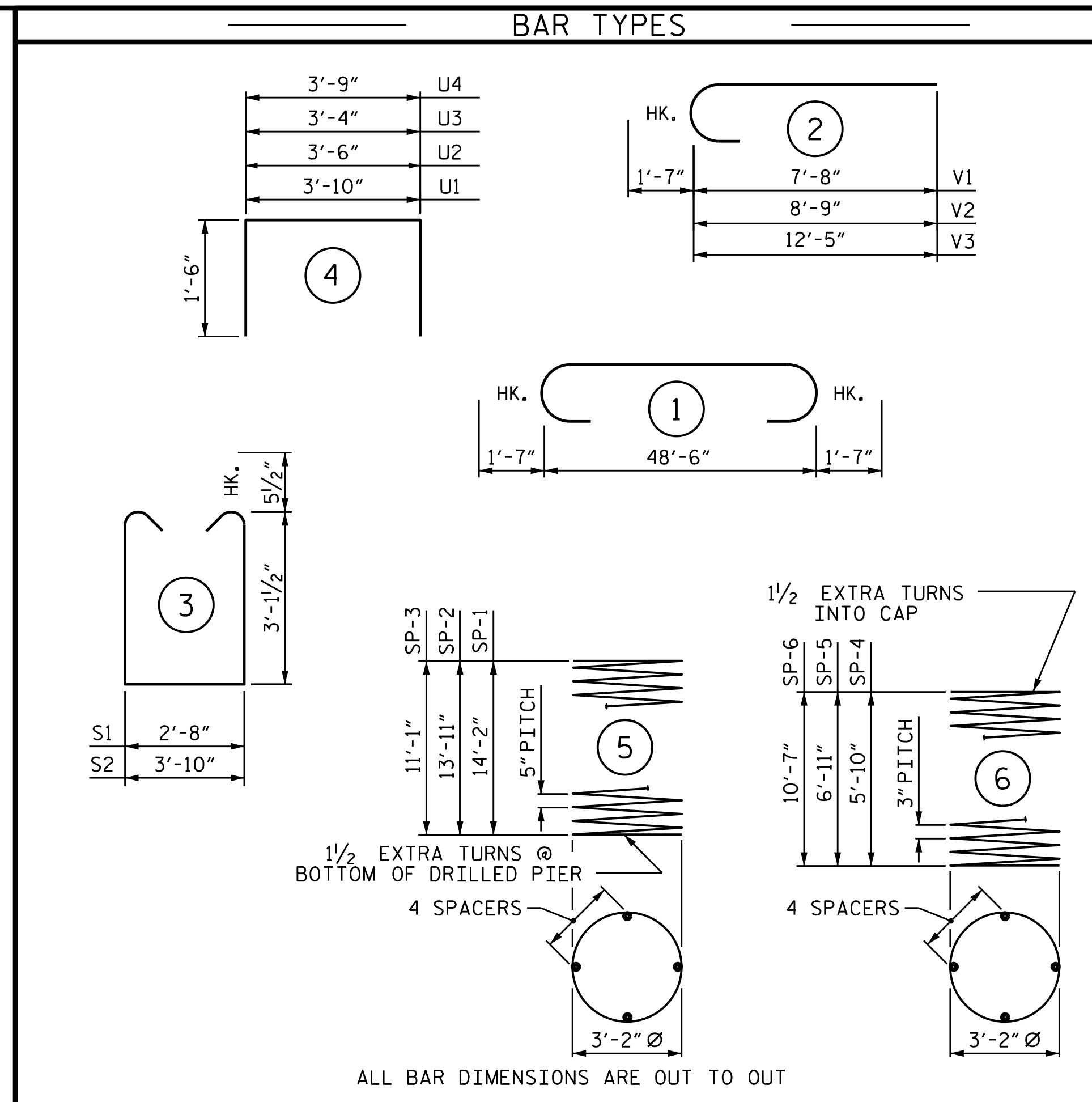
CONSTRUCTION JOINT DETAIL



LEFT END VIEW



RIGHT END VIEW



BAR TYPES

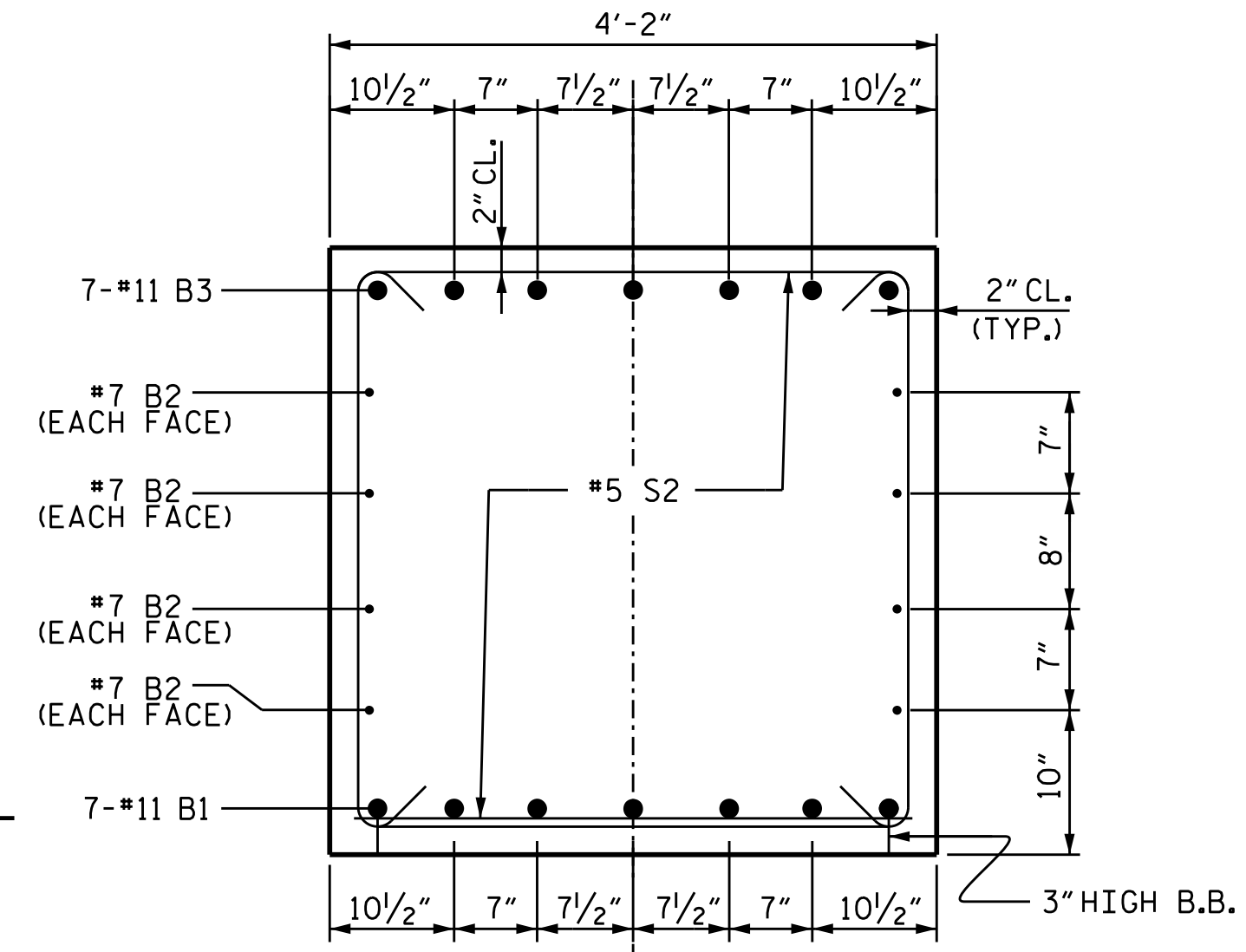
BILL OF MATERIAL					
BENT 2					
BAR NO.	SIZE	TYPE	LENGTH	WEIGHT	
B1	7	#11	STR	48'-8"	1810
B2	8	#7	STR	48'-8"	796
B3	7	#11	1	51'-8"	1922
B4	7	#4	STR	7'-6"	35
B5	14	#4	STR	5'-6"	51
B6	7	#4	STR	3'-7"	17
M1	14	#11	STR	22'-3"	1655
M2	14	#11	STR	22'-0"	1636
M3	14	#11	STR	19'-2"	1426
S1	68	#5	3	9'-10"	697
S2	22	#5	3	11'-0"	252
U1	32	#4	4	6'-10"	146
U2	4	#4	4	6'-6"	17
U3	4	#4	4	6'-4"	17
U4	8	#4	4	6'-9"	36
V1	14	#11	2	9'-3"	688
V2	14	#11	2	10'-4"	769
V3	14	#11	2	14'-0"	1041

REINFORCING STEEL					
					13,011 LBS.
BAR NO.	SIZE	TYPE	LENGTH	WEIGHT	
SP-1	1	*	5	352'-7"	368
SP-2	1	*	5	342'-10"	358
SP-3	1	*	5	284'-1"	296
SP-4	1	**	6	245'-7"	164
SP-5	1	**	6	294'-8"	197
SP-6	1	**	6	432'-2"	289

SPIRAL COLUMN REINFORCING STEEL
1,672 LBS.

* THE SP-1, SP-2, SP-3 SPIRAL REINFORCING STEEL SHALL BE W31 OR D-31 COLD DRAWN WIRE OR #5 PLAIN OR DEFORMED BAR

** THE SP-4, SP-5, SP-6 SPIRAL REINFORCING STEEL SHALL BE W20 OR D-20 COLD DRAWN WIRE OR #4 PLAIN OR DEFORMED BAR



SECTION B-B

PROJECT NO. 17BP.14.R.204
JACKSON COUNTY
STATION: 24+58.00 -L-

SHEET 2 OF 2

STATE OF NORTH CAROLINA
DEPARTMENT OF TRANSPORTATION
RALEIGH
SUBSTRUCTURE

BENT 2

11/15/2023 | 7:42 AM EST

DOCUMENT NOT CONSIDERED FINAL UNLESS ALL SIGNATURES COMPLETED

TGS ENGINEERS
201 W. MARION ST STE 200
SHELBY, NC 28150
PH (704) 476-0003
CORP. LICENSE NO.: C-0275

REVISIONS

NO.	BY:	DATE:	NO.	BY:	DATE:
1			3		
2			4		

SHEET NO. S-38
TOTAL SHEETS 47

DRAWN BY: ZCS DATE: 10/22
CHECKED BY: MGC DATE: 10/22
DESIGN ENGINEER OF RECORD: ZCS DATE: 12/22