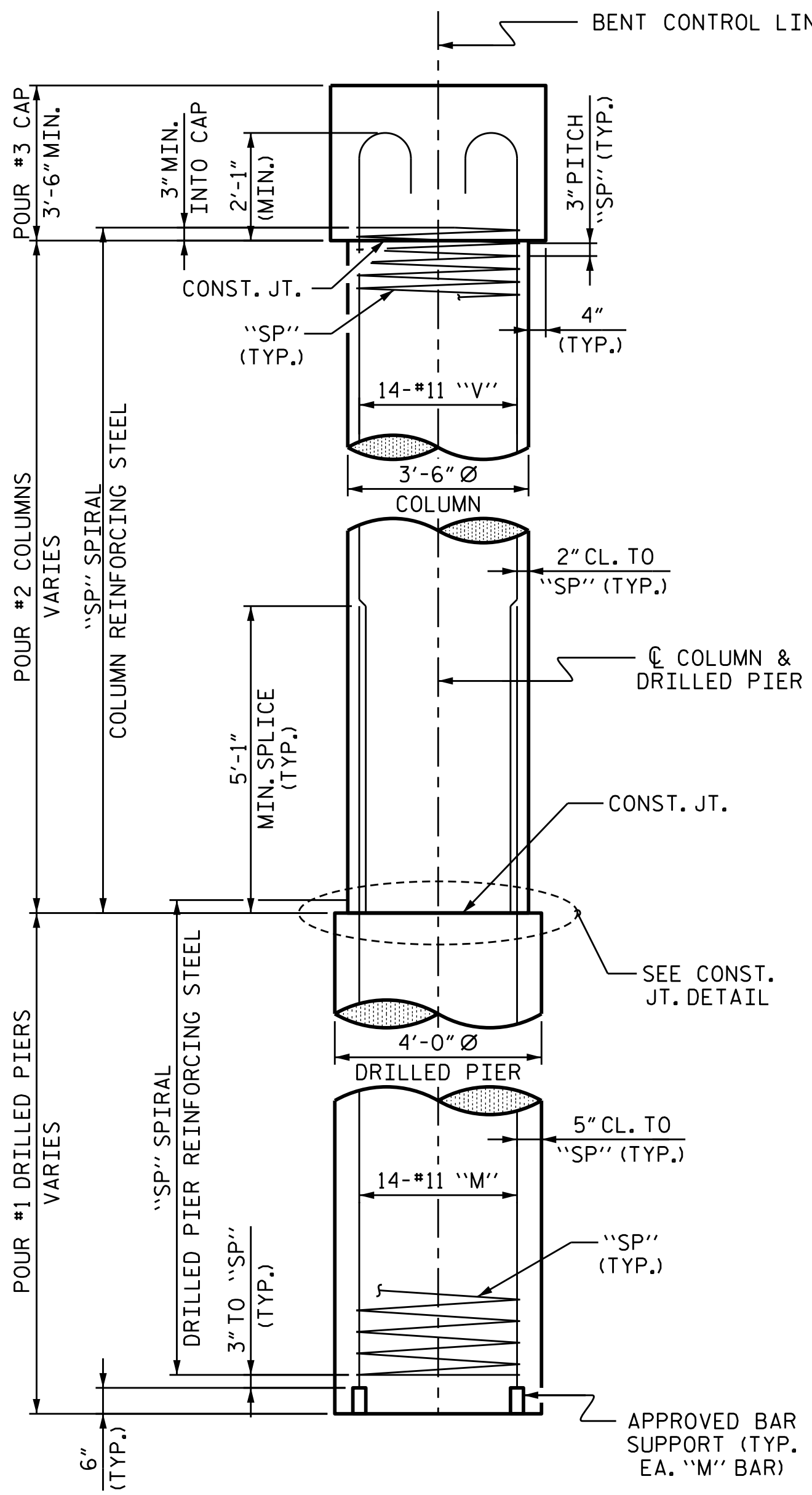
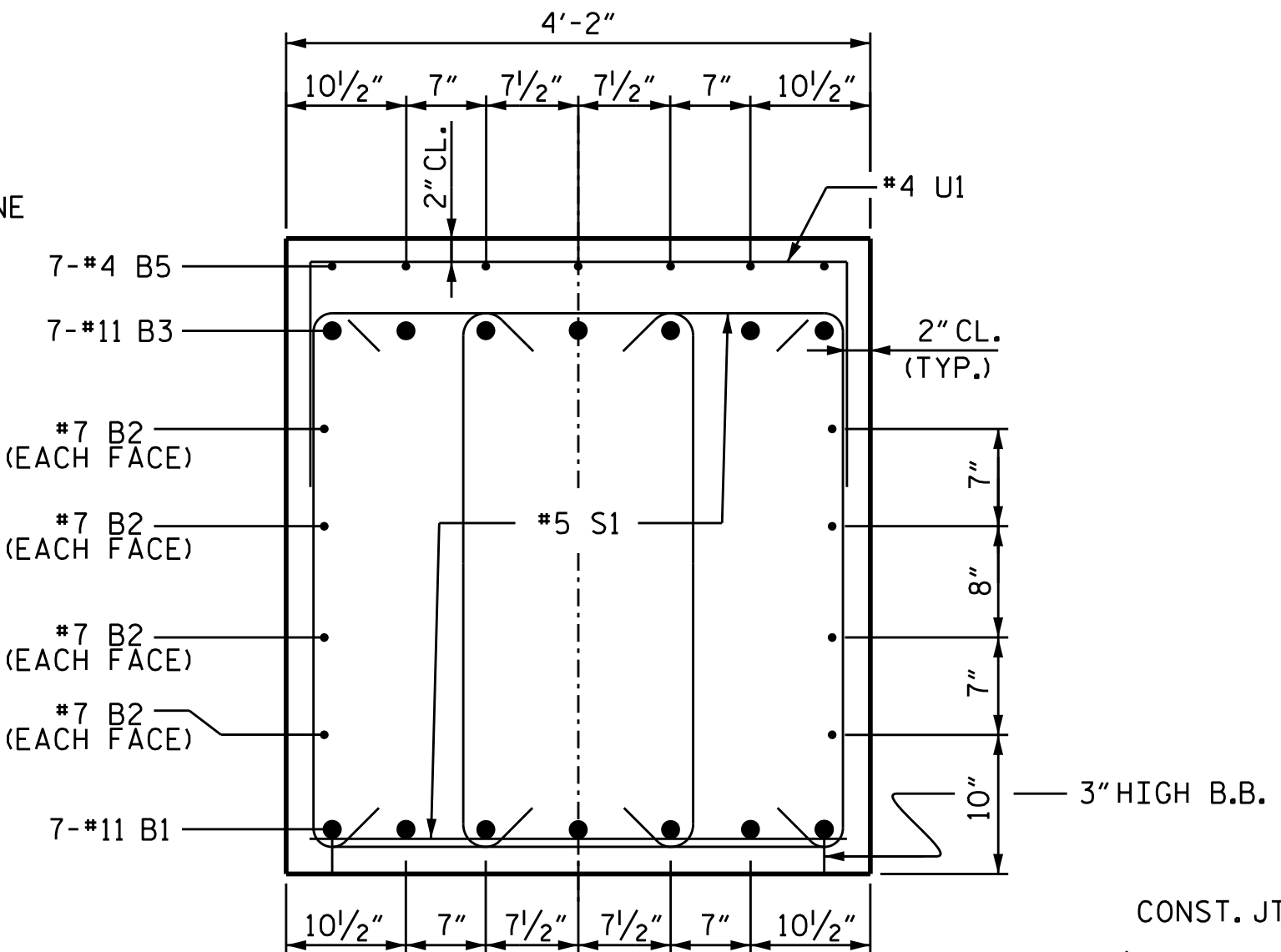


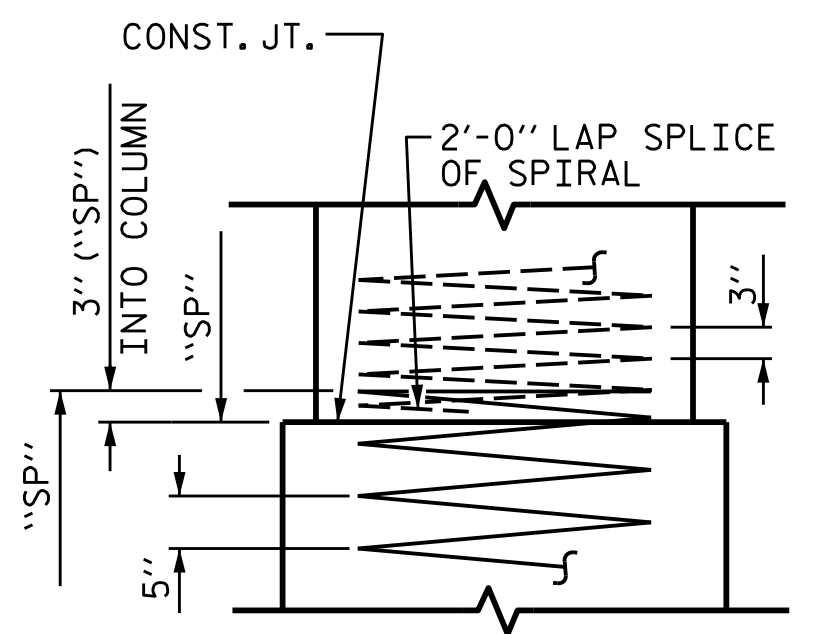
PLAN OF DRILLED PIERS & COLUMNS



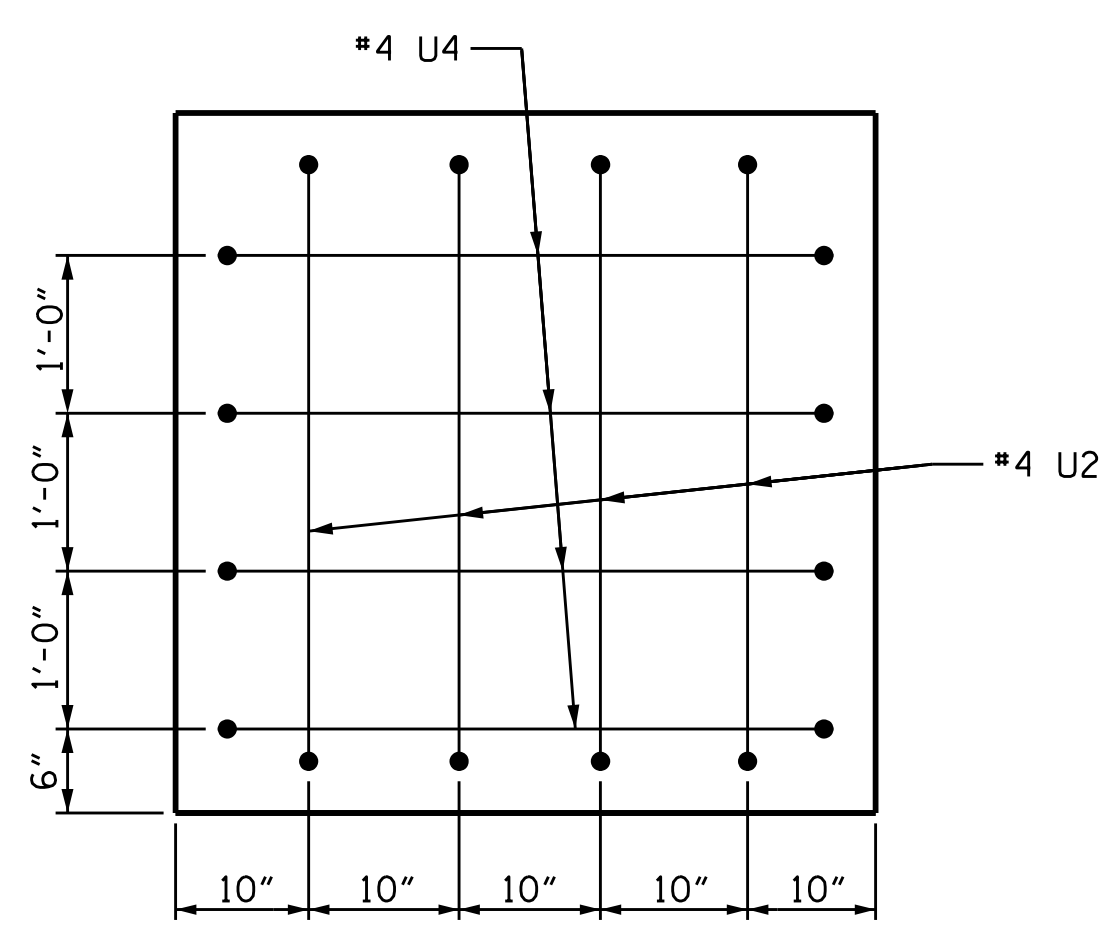
END ELEVATION



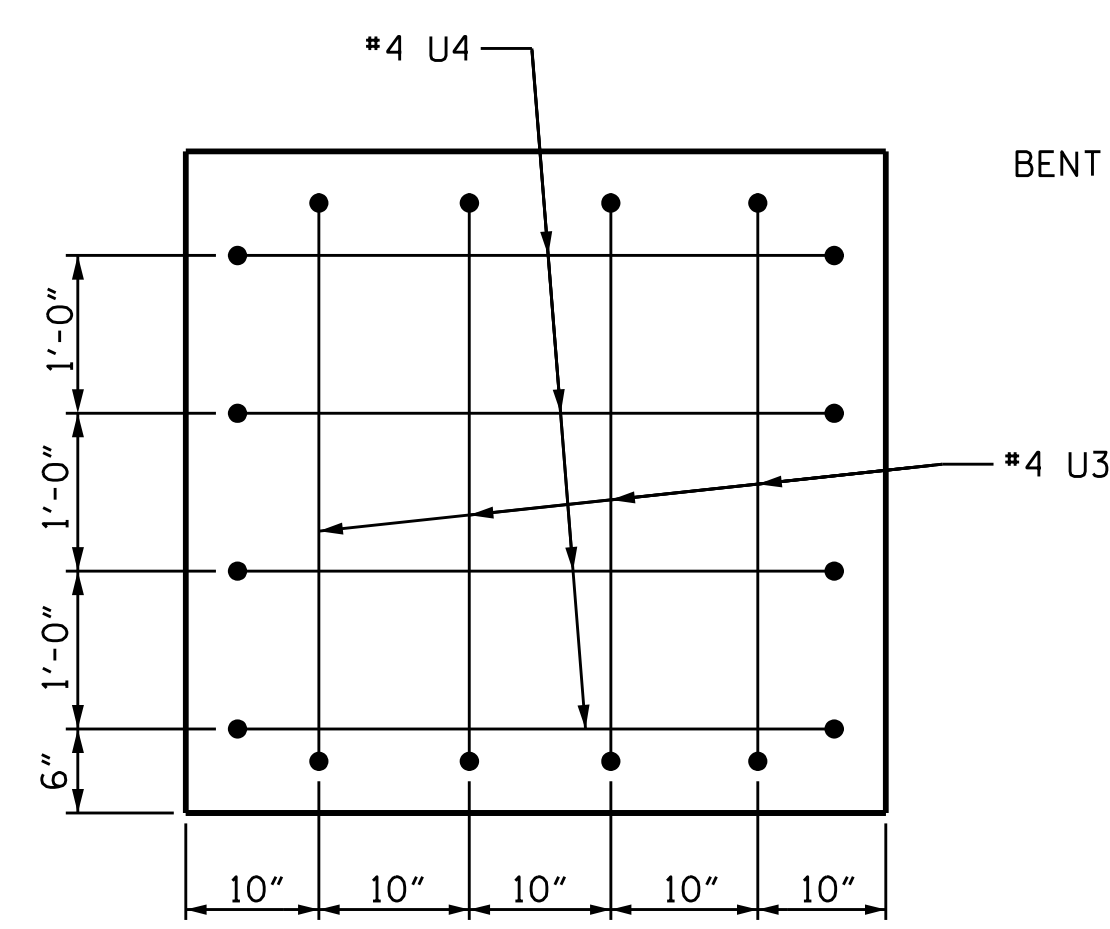
SECTION A-A



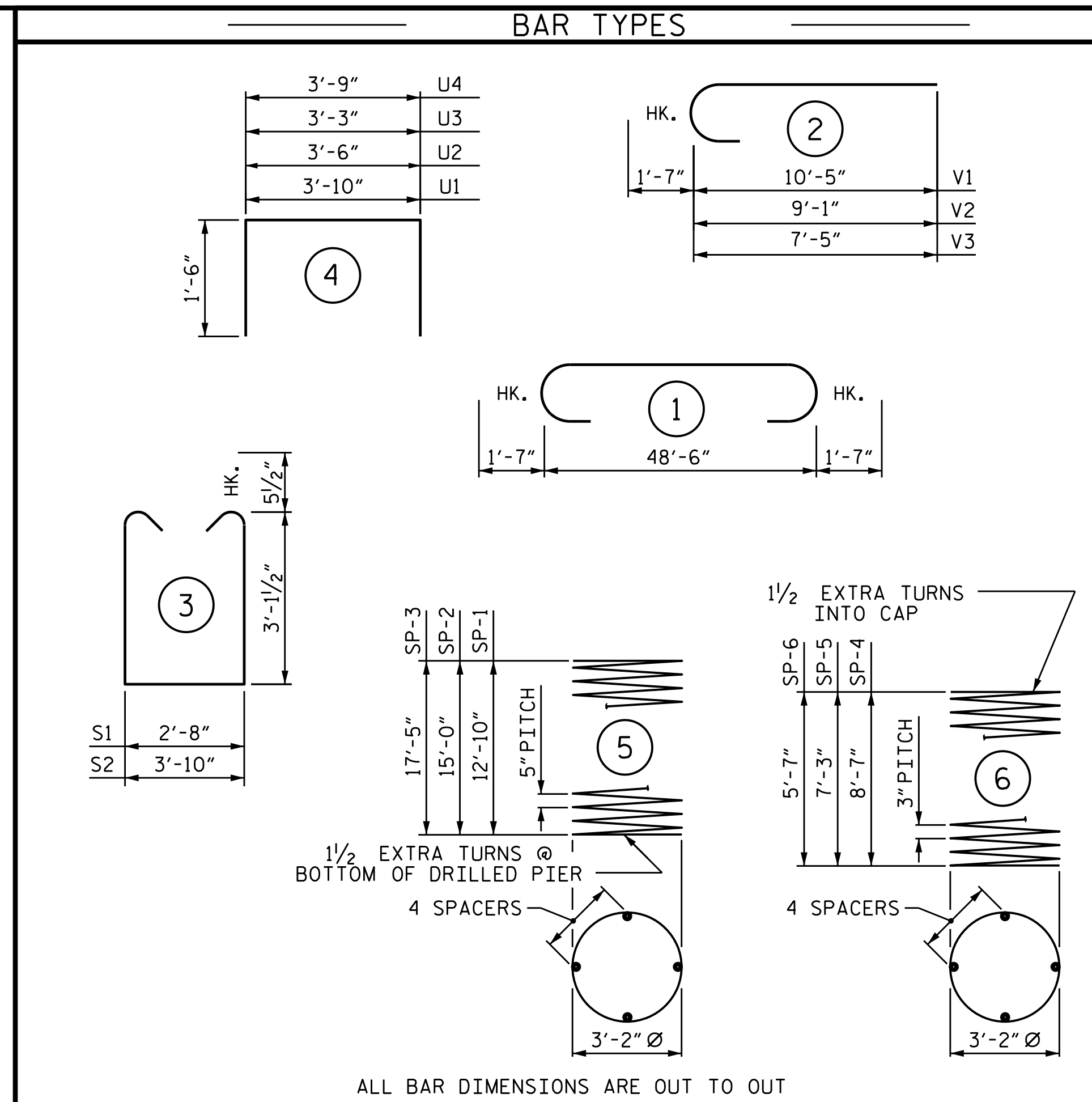
CONSTRUCTION JOINT DETAIL



LEFT END VIEW



RIGHT END VIEW



BAR TYPES

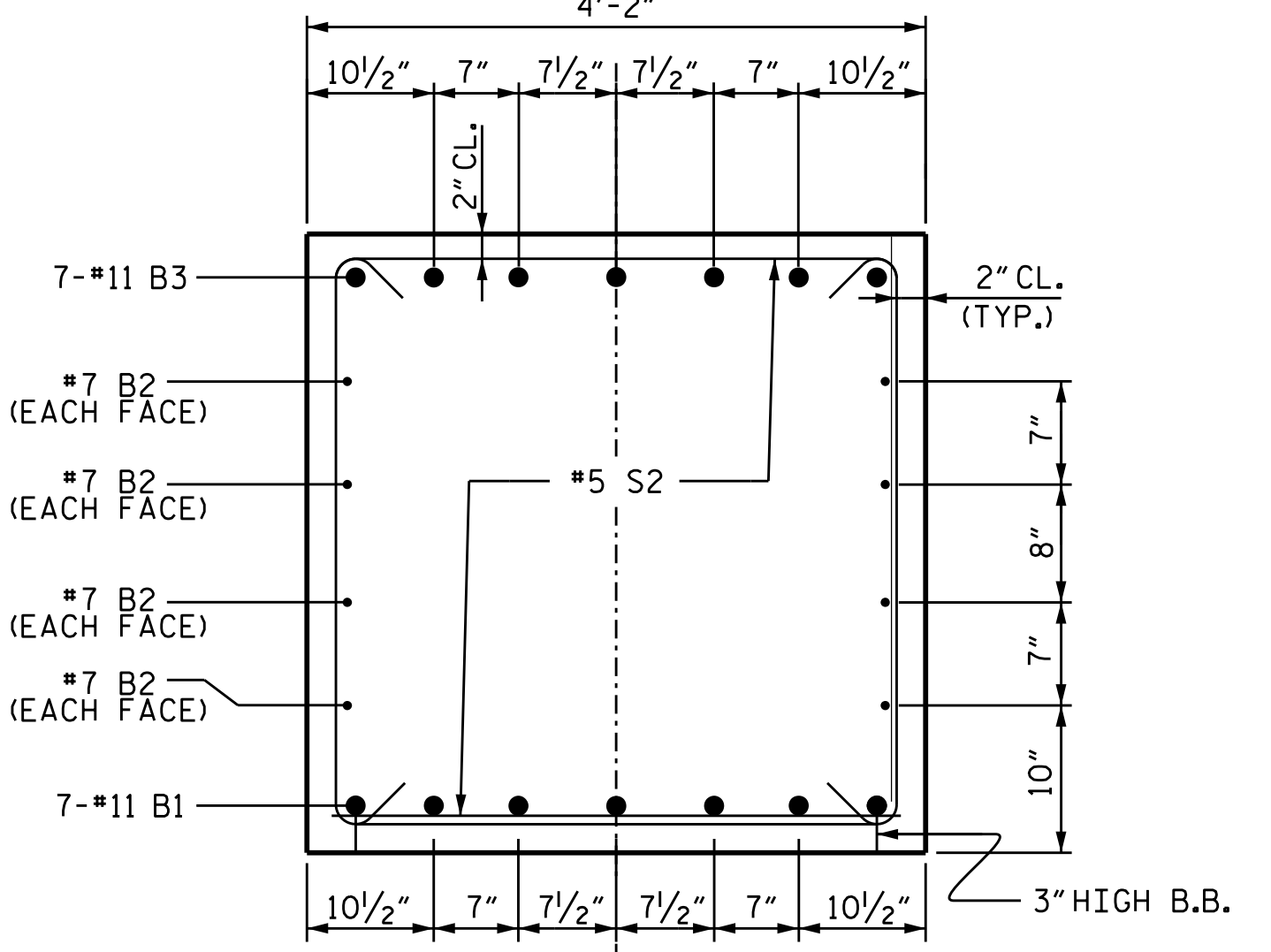
BILL OF MATERIAL					
BENT 1					
BAR NO.	SIZE	TYPE	LENGTH	WEIGHT	
B1	7	#11	STR	48'-8"	1810
B2	8	#7	STR	48'-8"	796
B3	7	#11	1	51'-8"	1922
B4	7	#4	STR	7'-6"	35
B5	14	#4	STR	5'-6"	51
B6	7	#4	STR	5'-0"	23
M1	14	#11	STR	20'-11"	1556
M2	14	#11	STR	23'-1"	1717
M3	14	#11	STR	25'-6"	1897
S1	68	#5	3	9'-10"	697
S2	22	#5	3	11'-0"	252
U1	33	#4	4	6'-10"	151
U2	4	#4	4	6'-6"	17
U3	4	#4	4	6'-3"	17
U4	8	#4	4	6'-9"	36
V1	14	#11	2	12'-0"	893
V2	14	#11	2	10'-8"	793
V3	14	#11	2	9'-0"	669

REINFORCING STEEL					
					13,332 LBS.
BAR NO.	SIZE	TYPE	LENGTH	WEIGHT	
SP-1	1	*	5	323'-3"	337
SP-2	1	*	5	372'-2"	388
SP-3	1	*	5	431'-0"	450
SP-4	1	**	6	353'-7"	236
SP-5	1	**	6	304'-6"	203
SP-6	1	**	6	235'-9"	157

SPIRAL COLUMN REINFORCING STEEL  
1,771 LBS.

\* THE SP-1, SP-2, SP-3 SPIRAL REINFORCING STEEL SHALL BE W31 OR D-31 COLD DRAWN WIRE OR #5 PLAIN OR DEFORMED BAR

\*\* THE SP-4, SP-5, SP-6 SPIRAL REINFORCING STEEL SHALL BE W20 OR D-20 COLD DRAWN WIRE OR #4 PLAIN OR DEFORMED BAR



SECTION B-B

PROJECT NO. 17BP.14.R.204  
JACKSON COUNTY  
STATION: 24+58.00 -L-

SHEET 2 OF 2

STATE OF NORTH CAROLINA  
DEPARTMENT OF TRANSPORTATION  
RALEIGH  
SUBSTRUCTURE

BENT 1

11/15/2023 | 7:42 AM EST

DOCUMENT NOT CONSIDERED FINAL UNLESS ALL SIGNATURES COMPLETED

TGS ENGINEERS  
201 W. MARION ST STE 200  
SHELBY, NC 28150  
PH (704) 476-0003  
CORP. LICENSE NO.: C-0275

REVISIONS

NO.	BY:	DATE:	NO.	BY:	DATE:
1			3		
2			4		

SHEET NO. S-36  
TOTAL SHEETS 47

DRAWN BY: ZCS DATE: 10/22  
CHECKED BY: MGC DATE: 10/22  
DESIGN ENGINEER OF RECORD: ZCS DATE: 12/22