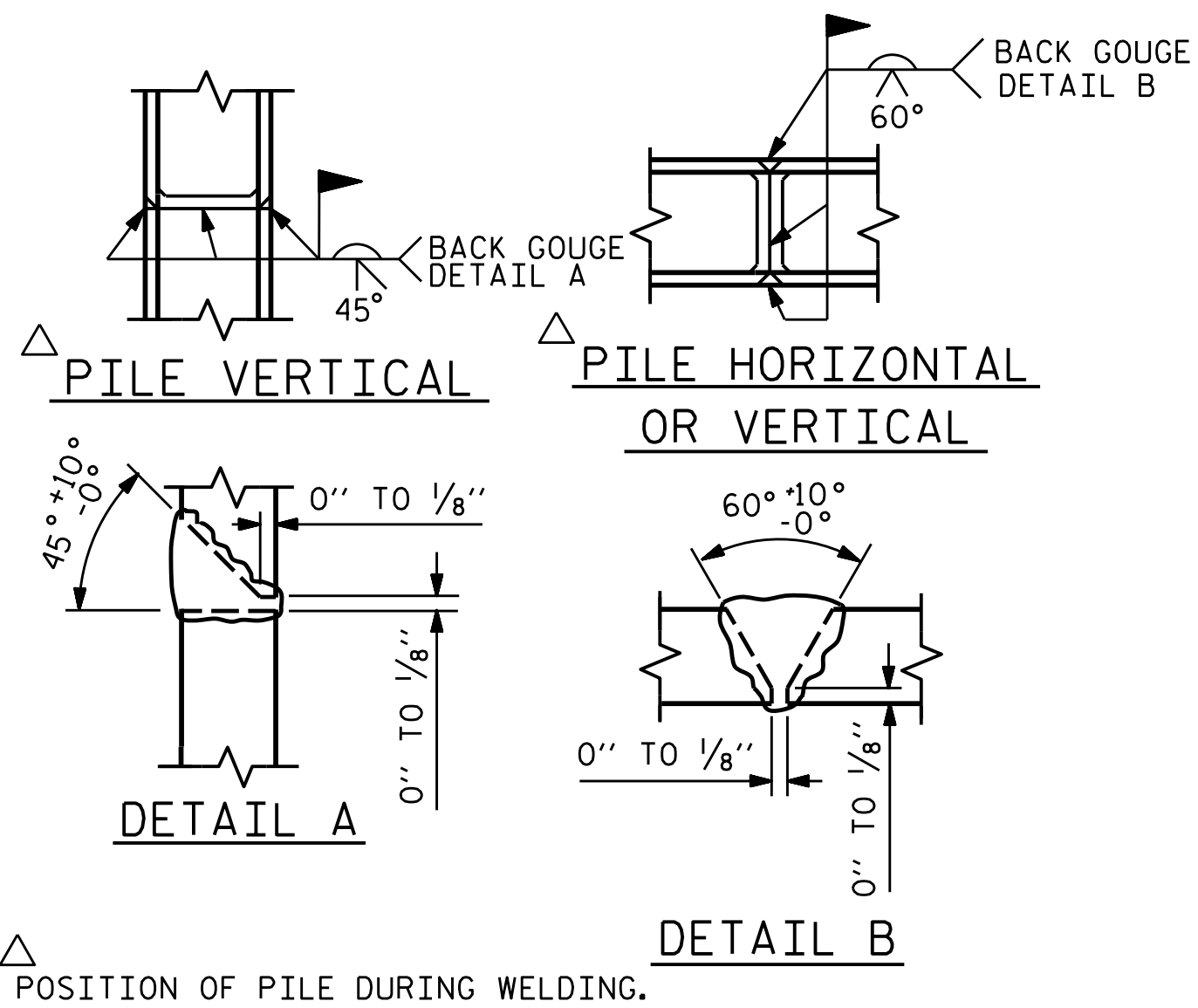


BAGGED STONE AND PIPE SHALL BE PLACED IMMEDIATELY AFTER COMPLETION OF END BENT EXCAVATION. PIPE MAY BE EITHER CONCRETE, CORRUGATED STEEL, CORRUGATED ALUMINUM ALLOY, OR CORRUGATED PLASTIC. PERFORATED PIPE WILL NOT BE ALLOWED.

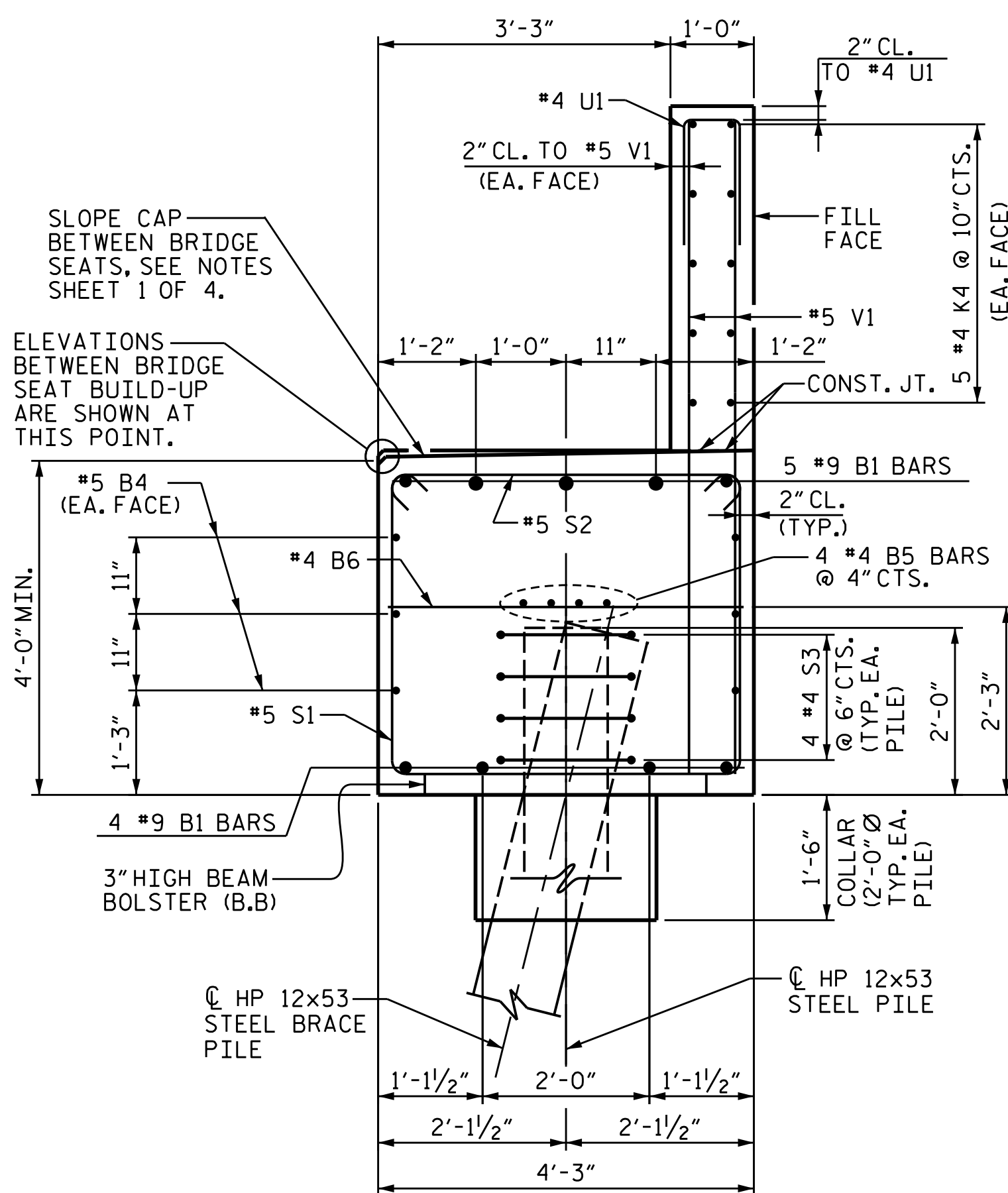
BAGGED STONE SHALL REMAIN IN PLACE UNTIL THE ENGINEER DIRECTS THAT IT BE REMOVED. THE CONTRACTOR SHALL REMOVE AND DISPOSE OF SILT ACCUMULATIONS AT BAGGED STONE WHEN SO DIRECTED BY THE ENGINEER. BAGS SHALL BE REMOVED AND REPLACED WHENEVER THE ENGINEER DETERMINES THAT THEY HAVE DETERIORATED AND LOST THEIR EFFECTIVENESS.

NO SEPARATE PAYMENT WILL BE MADE FOR THIS WORK AND THE ENTIRE COST OF THIS WORK SHALL BE INCLUDED IN THE UNIT CONTRACT PRICE BID FOR THE SEVERAL PAY ITEMS.

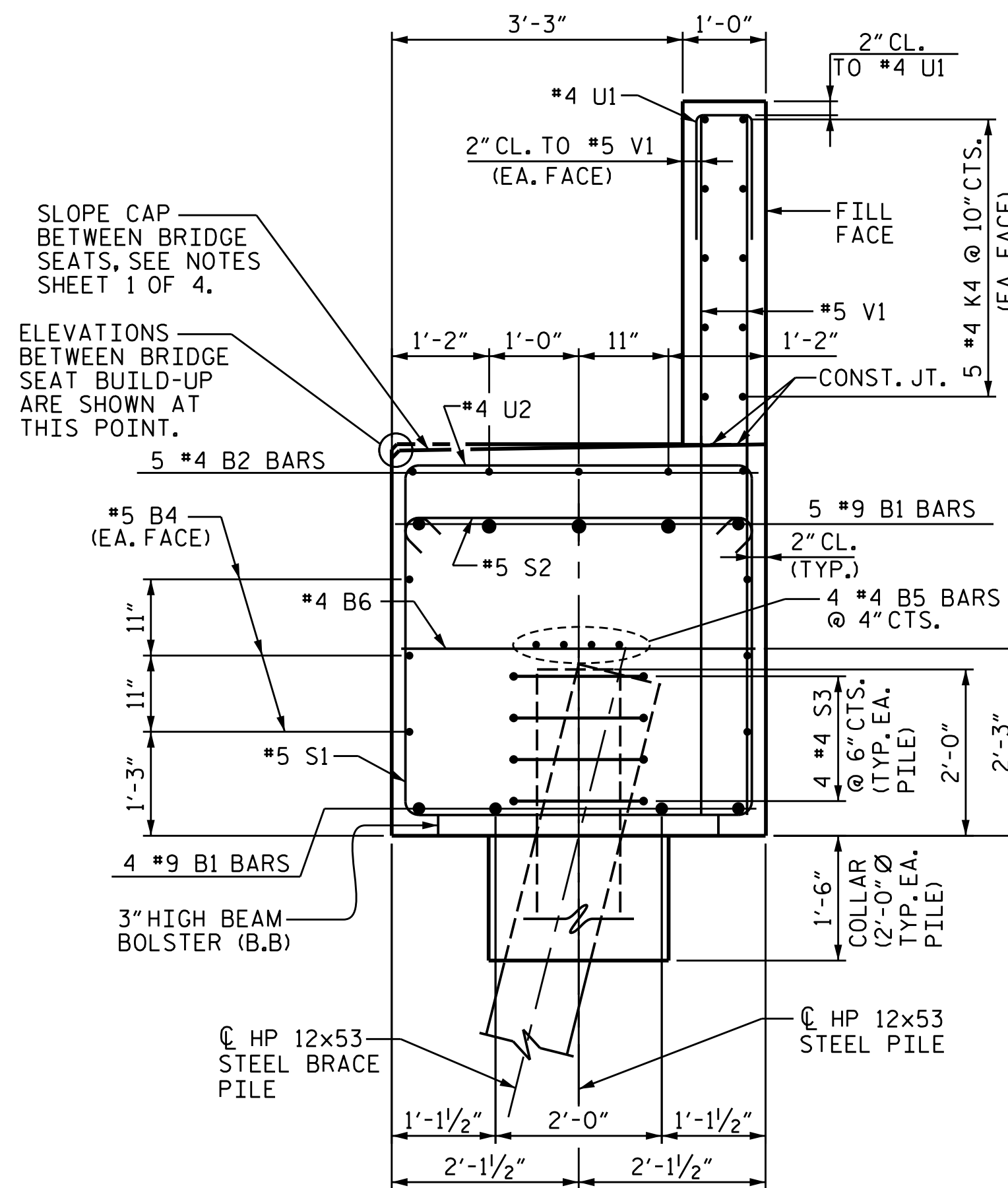
### TEMPORARY DRAINAGE AT END BENT



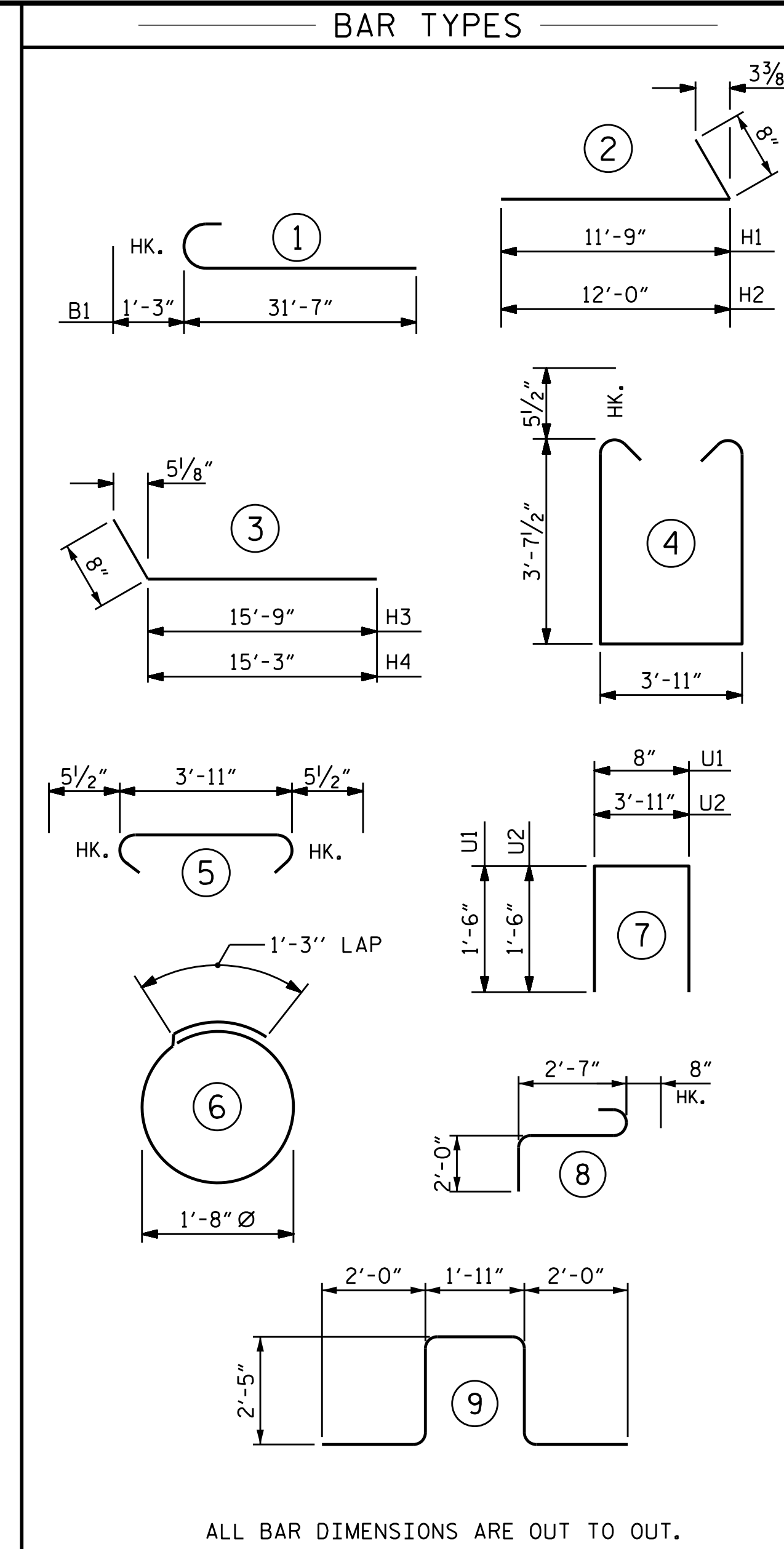
### PILE SPLICE DETAILS



SECTION A-A



SECTION B-B



ALL BAR DIMENSIONS ARE OUT TO OUT.

### BILL OF MATERIAL END BENT 1

BAR NO.	SIZE	TYPE	LENGTH	WEIGHT	
B1	18	#9	1	32'-10"	2009
B2	15	#4	STR	7'-0"	70
B3	5	#4	STR	16'-3"	54
B4	12	#5	STR	30'-5"	381
B5	8	#4	STR	30'-0"	160
B6	14	#4	STR	3'-11"	37
H1	20	#6	2	12'-5"	373
H2	20	#6	2	12'-8"	381
H3	19	#6	3	16'-5"	468
H4	19	#6	3	15'-11"	454
K1	3	#4	STR	5'-6"	11
K2	3	#4	STR	5'-8"	11
K3	3	#4	STR	3'-4"	7
K4	3	#4	STR	3'-2"	6
K5	20	#4	STR	30'-0"	401
S1	53	#5	4	12'-1"	668
S2	53	#5	5	4'-10"	267
S3	36	#4	6	6'-6"	156
S5	3	#6	8	5'-3"	24
S6	3	#6	9	10'-9"	48
U1	48	#4	7	3'-8"	118
U2	25	#4	7	6'-11"	116
V1	96	#5	STR	7'-9"	776
V2	37	#5	STR	9'-10"	379
V3	40	#5	STR	9'-3"	386

REINFORCING STEEL 7761 LBS.

CLASS A CONCRETE BREAKDOWN

POUR #1 CAP, LOWER PART OF WINGS & COLLARS 48.0 C.Y.

POUR #2 BACKWALL & UPPER PART OF WINGS 15.3 C.Y.

TOTAL CLASS A CONCRETE 63.3 C.Y.

HP 12 X 53 STEEL PILES  
NO: 10 150 LIN. FT.

PILE DRIVING EQUIPMENT  
SETUP FOR  
HP 12 X 53 STEEL PILES 10 EA.

PILE EXCAVATION IN SOIL 94.00 L.F.

PILE EXCAVATION NOT IN SOIL 14.00 L.F.

PROJECT NO. 17BP.14.R.204

JACKSON COUNTY

STATION: 24+58.00-L-

SHEET 4 OF 4

11/15/2023 | 7:42 AM EST

DOCUMENT NOT CONSIDERED FINAL  
UNLESS ALL SIGNATURES COMPLETED

TGS ENGINEERS  
201 W. MARION ST STE 200  
SHELBY, NC 28150  
PH (704) 476-0003  
CORP. LICENSE NO.: C-0275

STATE OF NORTH CAROLINA  
DEPARTMENT OF TRANSPORTATION  
RALEIGH

### SUBSTRUCTURE END BENT 1 DETAILS

DRAWN BY : NMW DATE : 8/22  
CHECKED BY : MGC DATE : 10/22  
DESIGN ENGINEER OF RECORD : ZCS DATE : 1/23

REVISIONS						SHEET NO.
NO.	BY:	DATE:	NO.	BY:	DATE:	S-34
1			3			TOTAL SHEETS
2			4			47