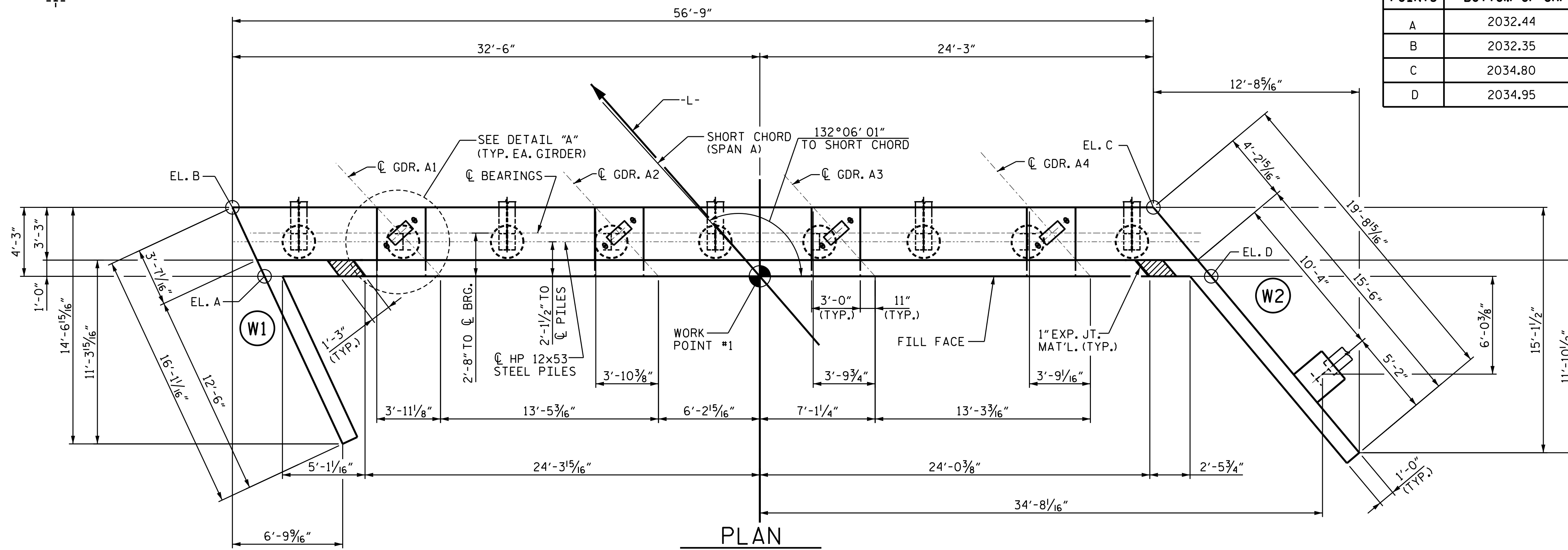


INDICATES 3:12 PILE BATTER
IN DIRECTION SHOWN.



PLAN

CAP ELEVATIONS	
POINTS	BOTTOM OF CAP
A	2032.44
B	2032.35
C	2034.80
D	2034.95

NOTES :

STIRRUPS IN CAP MAY BE SHIFTED AS NECESSARY TO CLEAR ANCHOR BOLTS.

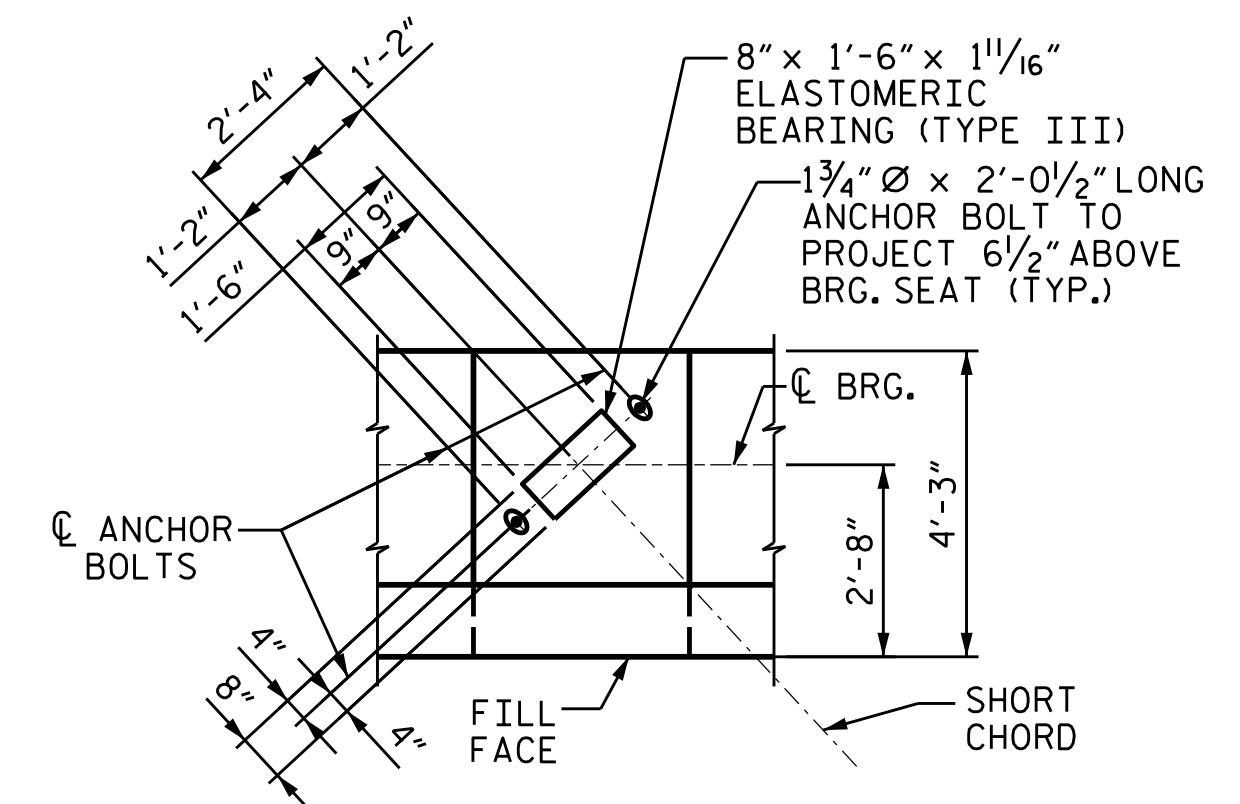
FOR PILE SPLICE DETAILS, SEE SHEET 4 OF 4.

BACKWALL SHALL BE PLACED BEFORE APPLYING THE EPOXY PROTECTIVE COATING.

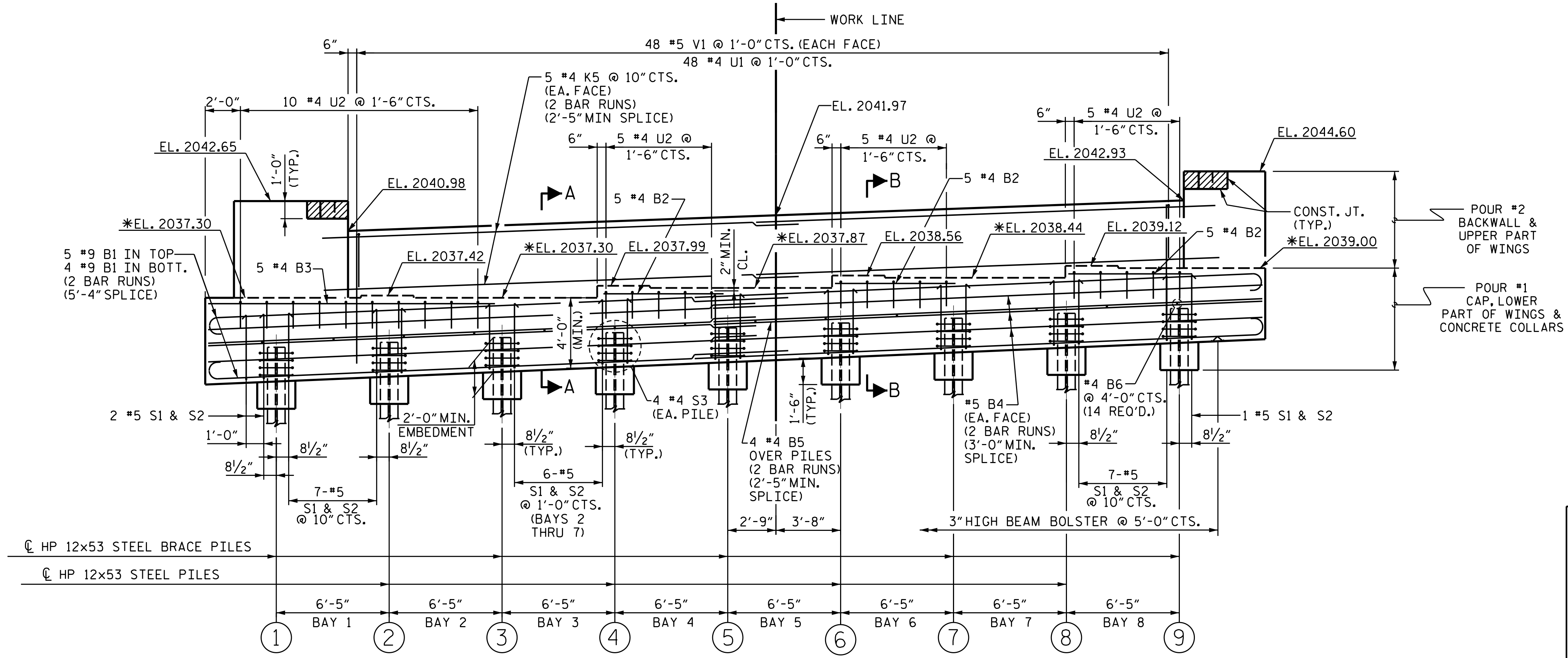
THE TOP SURFACE AREAS OF THE END BENT CAP SHALL BE CURED IN ACCORDANCE WITH THE STANDARD SPECIFICATIONS EXCEPT THAT THE MEMBRANE CURING COMPOUND METHOD SHALL NOT BE USED.

THE TOP SURFACE OF THE END BENT CAP EXCEPT THE BRIDGE SEAT BUILDUPS SHALL BE SLOPED TRANSVERSELY FROM THE FILL FACE TO THE BACK FACE AT THE RATE OF 2%.

THE CONCRETE IN THE SHADED AREA OF THE WING SHALL BE POURED AFTER THE PARAPET IS POURED IF SLIP FORMING IS USED.



DETAIL A



ELEVATION

TOP OF PILE ELEVATIONS	
1	2034.53
2	2034.81
3	2035.08
4	2035.36
5	2035.64
6	2035.92
7	2036.20
8	2036.48
9	2036.75

PROJECT NO. 17BP.14.R.204
 JACKSON COUNTY
 STATION: 24+58.00-L-
 SHEET 1 OF 4

STATE OF NORTH CAROLINA
 DEPARTMENT OF TRANSPORTATION
 RALEIGH

SEAL 20125
 ENGINEER
 G. CHESTNUT
 11/15/2023 | 7:42 AM EST

DOCUMENT NOT CONSIDERED FINAL
 UNLESS ALL SIGNATURES COMPLETED

TGS ENGINEERS
 201 W. MARION ST STE 200
 SHELBY, NC 28150
 PH (704) 476-0003
 CORP. LICENSE NO.: C-0275

REVISIONS						SHEET NO.
NO.	BY:	DATE:	NO.	BY:	DATE:	S-31
1			3			TOTAL SHEETS 47
2			4			

DRAWN BY : NMW DATE : 7/22
 CHECKED BY : MGC DATE : 10/22
 DESIGN ENGINEER OF RECORD : ZCS DATE : 1/23

(WINGS NOT SHOWN FOR CLARITY)
 FOR SECTION A-A AND B-B SEE SHEET 4 OF 4
 *FOR LOCATION OF ELEVATION BETWEEN BRIDGE SEAT BUILD-UPS, SEE TYPICAL SECTION