

**SUPERSTRUCTURE REINFORCING STEEL LENGTHS ARE BASED ON THE FOLLOWING MINIMUM SPLICE LENGTHS**

BAR SIZE	SUPERSTRUCTURE EXCEPT APPROACH SLABS, PARAPET, AND BARRIER RAIL		APPROACH SLABS		PARAPET AND BARRIER RAIL
	EPOXY COATED	UNCOATED	EPOXY COATED	UNCOATED	
#4	1'-11"	1'-7"	1'-11"	1'-7"	2'-6"
#5	2'-5"	2'-0"	2'-5"	2'-0"	3'-1"
#6	2'-10"	2'-5"	3'-7"	2'-5"	3'-8"
#7	4'-2"	2'-9"			
#8	4'-9"	3'-2"			

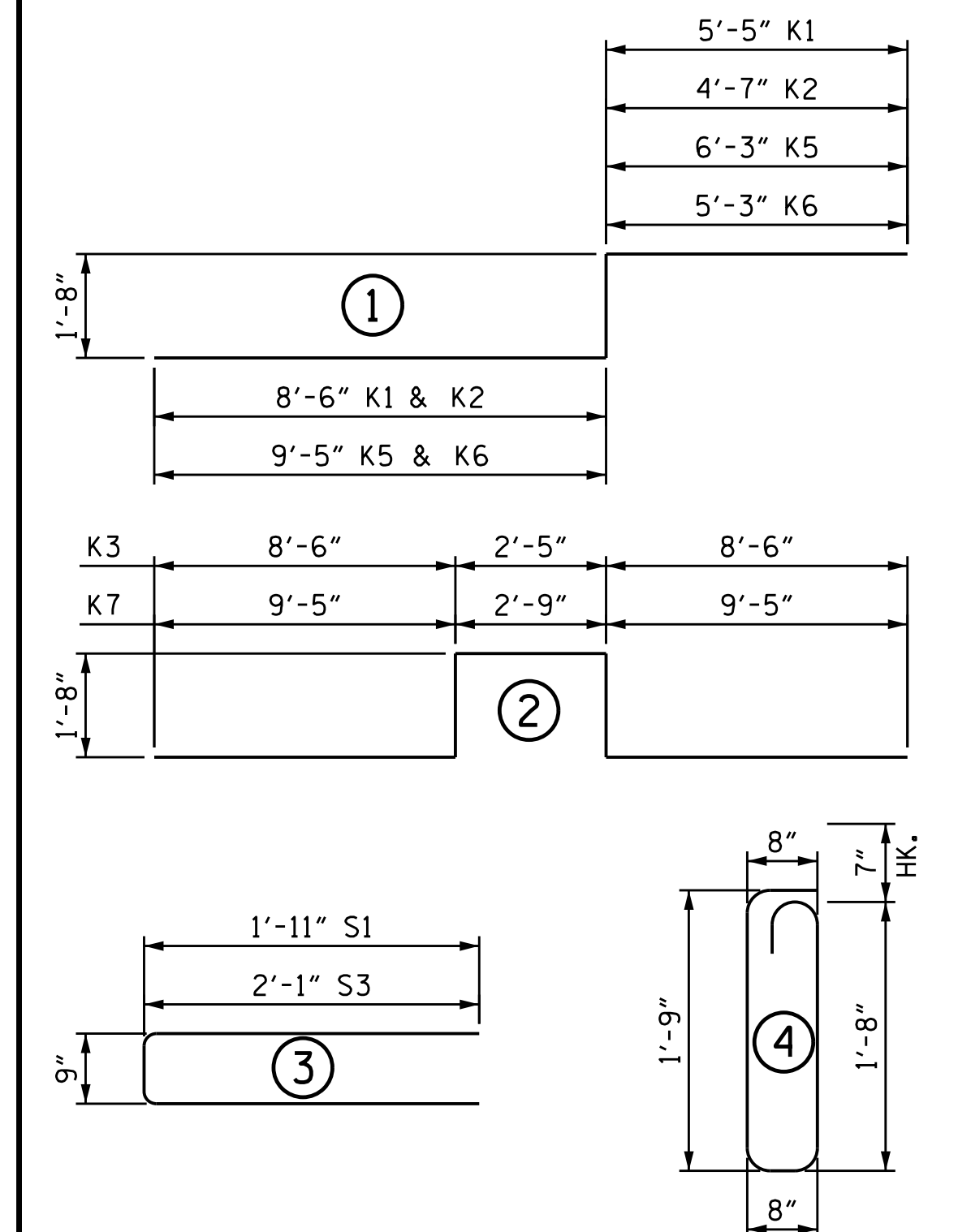
**SUPERSTRUCTURE BILL OF MATERIAL**

SPANS A, B & C	CLASS AA CONCRETE POUR #1	REINFORCING STEEL	EPOXY COATED REINFORCING STEEL	
		(CU. YDS.)	(LBS.)	(LBS.)
TOTAL **		209.8	26,354	23,361

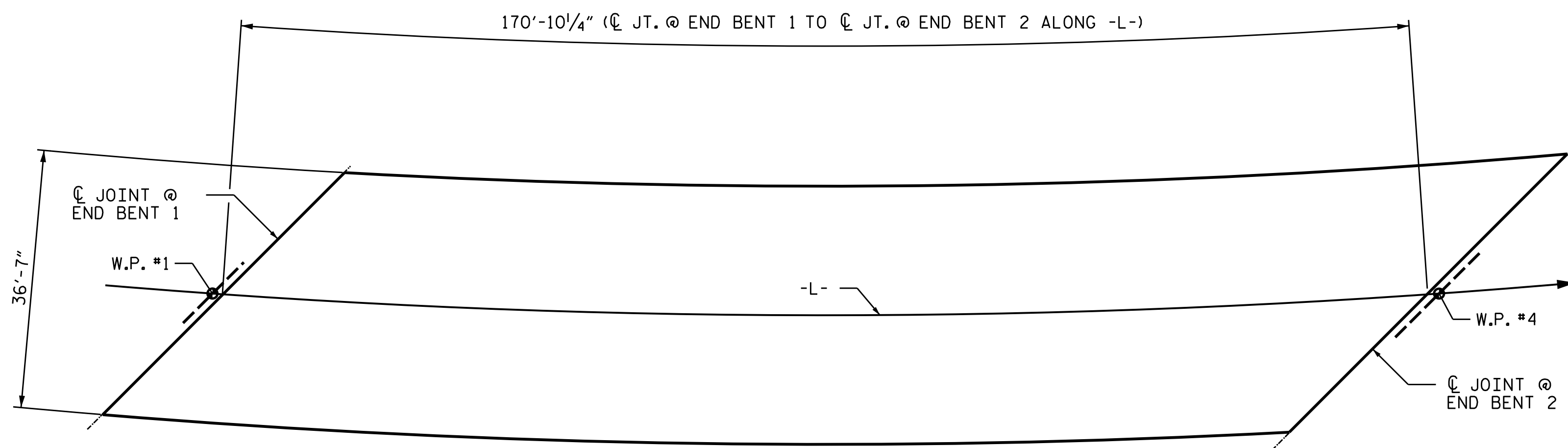
**GROOVING BRIDGE FLOORS**

APPROACH SLABS	1,844	SO. FT.
BRIDGE DECK	5,808	SO. FT.
TOTAL	7,652	SO. FT.

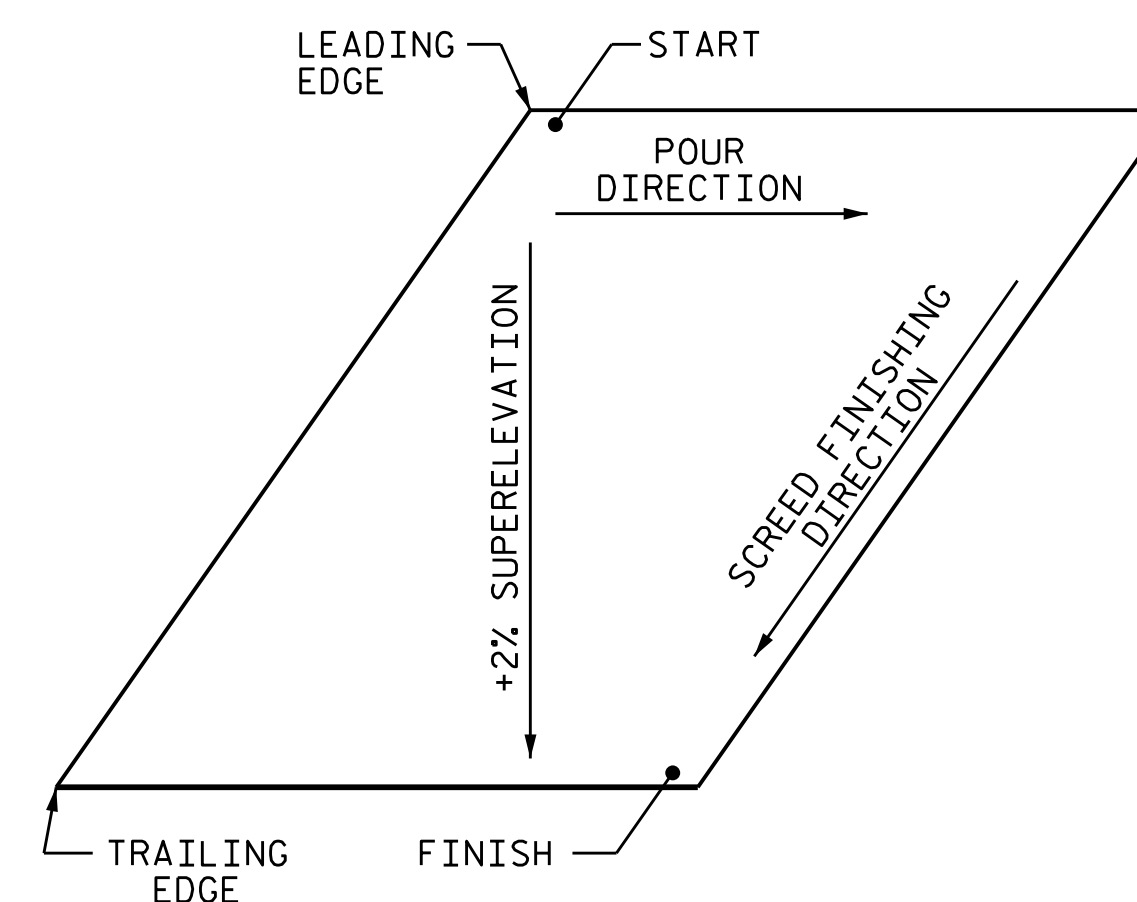
**BAR TYPES**



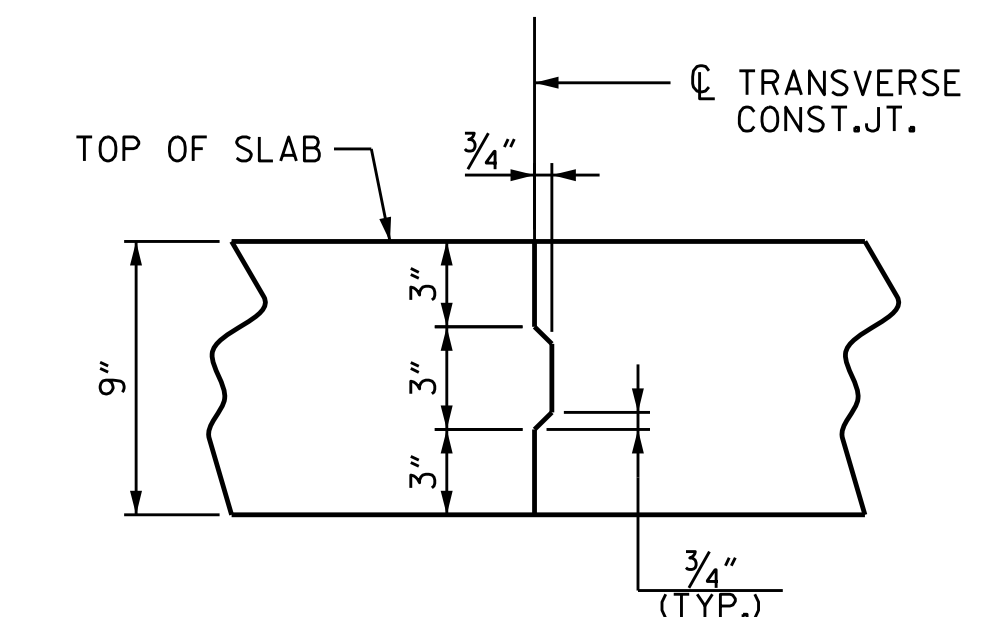
ALL BAR DIMENSIONS ARE OUT TO OUT



LAYOUT FOR COMPUTING AREA  
REINFORCED CONCRETE DECK SLAB  
(SQ. FT. = 6,250)

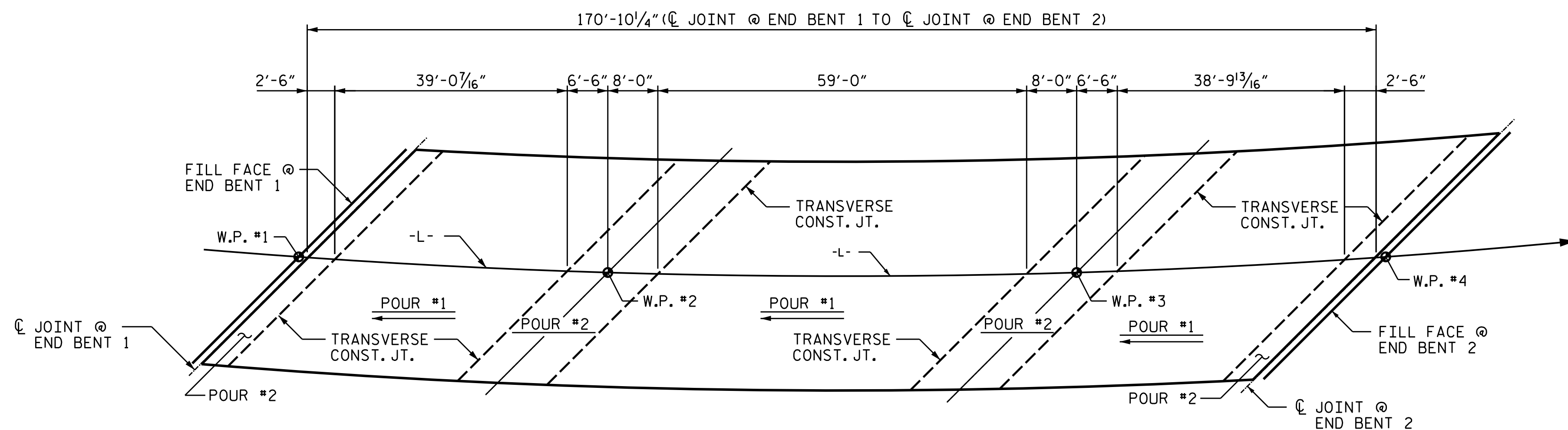


POUR DIRECTION  
FOR BRIDGE DECK



TRANSVERSE CONSTRUCTION  
JOINT DETAIL

NOTE: REINFORCING STEEL IN SLAB NOT SHOWN.  
LONGITUDINAL REINFORCING STEEL SHALL BE  
CONTINUOUS THRU JOINT.



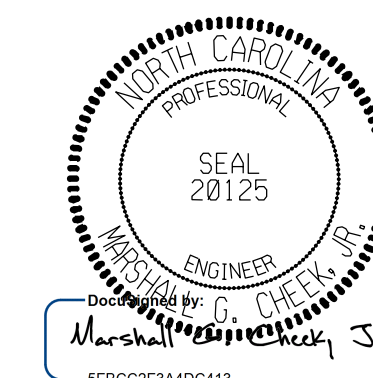
POUR SEQUENCE

PROJECT NO. 17BP.14.R.204

JACKSON COUNTY

STATION: 24+58.00-L-

SHEET 2 OF 2



11/15/2023 | 7:42 AM EST

DOCUMENT NOT CONSIDERED FINAL  
UNLESS ALL SIGNATURES COMPLETED

TGS ENGINEERS  
201 W. MARION ST STE 200  
SHELBY, NC 28150  
PH (704) 476-0003  
CORP. LICENSE NO.: C-0275

STATE OF NORTH CAROLINA  
DEPARTMENT OF TRANSPORTATION  
RALEIGH  
SUPERSTRUCTURE  
BILL OF MATERIAL

REVISIONS

NO.	BY:	DATE:	NO.	BY:	DATE:
1			3		
2			4		

SHEET NO.  
S-30  
TOTAL SHEETS  
47

DRAWN BY : JLA DATE : 10/22  
CHECKED BY : MGC DATE : 10/22