

DEAD LOAD DEFLECTION TABLE FOR GIRDERS																						
0.6" Ø LOW RELAXATION STRANDS		SPAN A & C GIRDERS 1 & 4																				
	↑	¢ BRG.	.05	.10	.15	.20	.25	.30	.35	.40	.45	.50	.55	.60	.65	.70	.75	.80	.85	.90	.95	¢ BRG.
CAMBER (GIRDER ALONE IN PLACE)	↑	0.000	0.011	0.022	0.032	0.041	0.050	0.057	0.062	0.066	0.069	0.070	0.069	0.066	0.062	0.057	0.050	0.041	0.032	0.022	0.011	0.000
* DEFLECTION DUE TO SUPERIMPOSED D.L.	↓	0.000	0.004	0.008	0.012	0.015	0.018	0.021	0.023	0.025	0.026	0.026	0.026	0.025	0.023	0.021	0.018	0.015	0.012	0.008	0.004	0.000
FINAL CAMBER	↑	0	1/16"	3/16"	1/4"	5/16"	3/8"	7/16"	7/16"	1/2"	1/2"	1/2"	1/2"	1/2"	7/16"	7/16"	3/8"	5/16"	1/4"	3/16"	1/16"	0

DEAD LOAD DEFLECTION TABLE FOR GIRDERS																							
0.6" Ø LOW RELAXATION STRANDS		SPAN A & C GIRDERS 2 & 3																					
	↑	¢ BRG.	.05	.10	.15	.20	.25	.30	.35	.40	.45	.50	.55	.60	.65	.70	.75	.80	.85	.90	.95	¢ BRG.	
CAMBER (GIRDER ALONE IN PLACE)	↑	0.000	0.011	0.022	0.032	0.041	0.049	0.056	0.062	0.066	0.068	0.069	0.068	0.066	0.062	0.056	0.049	0.041	0.032	0.022	0.011	0.000	
* DEFLECTION DUE TO SUPERIMPOSED D.L.	↓	0.000	0.004	0.008	0.013	0.017	0.020	0.023	0.025	0.027	0.028	0.029	0.028	0.027	0.025	0.023	0.020	0.017	0.013	0.008	0.004	0.000	
FINAL CAMBER	↑	0	1/16"	3/16"	1/4"	5/16"	3/8"	3/8"	7/16"	7/16"	1/2"	1/2"	1/2"	1/2"	7/16"	7/16"	3/8"	3/8"	5/16"	1/4"	3/16"	1/16"	0

DEAD LOAD DEFLECTION TABLE FOR GIRDERS																							
0.6" Ø LOW RELAXATION STRANDS		SPAN B GIRDER 1																					
	↑	¢ BRG.	.05	.10	.15	.20	.25	.30	.35	.40	.45	.50	.55	.60	.65	.70	.75	.80	.85	.90	.95	¢ BRG.	
CAMBER (GIRDER ALONE IN PLACE)	↑	0.000	0.032	0.063	0.093	0.120	0.144	0.164	0.181	0.192	0.200	0.202	0.200	0.192	0.181	0.164	0.144	0.120	0.093	0.063	0.032	0.000	
* DEFLECTION DUE TO SUPERIMPOSED D.L.	↓	0.000	0.024	0.048	0.071	0.094	0.112	0.130	0.141	0.153	0.157	0.161	0.157	0.153	0.141	0.130	0.112	0.094	0.071	0.048	0.024	0.000	
FINAL CAMBER	↑	0	1/8"	3/16"	1/4"	5/16"	3/8"	7/16"	1/2"	1/2"	1/2"	1/2"	1/2"	1/2"	1/2"	1/2"	7/16"	3/8"	5/16"	1/4"	3/16"	1/8"	0

DEAD LOAD DEFLECTION TABLE FOR GIRDERS																							
0.6" Ø LOW RELAXATION STRANDS		SPAN B GIRDER 2																					
	↑	¢ BRG.	.05	.10	.15	.20	.25	.30	.35	.40	.45	.50	.55	.60	.65	.70	.75	.80	.85	.90	.95	¢ BRG.	
CAMBER (GIRDER ALONE IN PLACE)	↑	0.000	0.032	0.063	0.092	0.119	0.142	0.162	0.179	0.190	0.197	0.200	0.197	0.190	0.179	0.162	0.142	0.119	0.092	0.063	0.032	0.000	
* DEFLECTION DUE TO SUPERIMPOSED D.L.	↓	0.000	0.025	0.051	0.075	0.100	0.119	0.138	0.150	0.162	0.167	0.171	0.167	0.162	0.150	0.138	0.119	0.100	0.075	0.051	0.025	0.000	
FINAL CAMBER	↑	0	1/16"	1/8"	3/16"	1/4"	1/4"	5/16"	3/8"	5/16"	3/8"	3/8"	3/8"	3/8"	5/16"	3/8"	5/16"	1/4"	1/4"	3/16"	1/8"	1/16"	0

DEAD LOAD DEFLECTION TABLE FOR GIRDERS																						
0.6" Ø LOW RELAXATION STRANDS		SPAN B GIRDER 3																				
	↑	¢ BRG.	.05	.10	.15	.20	.25	.30	.35	.40	.45	.50	.55	.60	.65	.70	.75	.80	.85	.90	.95	¢ BRG.
CAMBER (GIRDER ALONE IN PLACE)	↑	0.000	0.031	0.062	0.091	0.117	0.141	0.161	0.177	0.188	0.195	0.197	0.195	0.188	0.177	0.161	0.141	0.117	0.091	0.062	0.031	0.000
* DEFLECTION DUE TO SUPERIMPOSED D.L.	↓	0.000	0.025	0.049	0.073	0.096	0.115	0.133	0.145	0.157	0.161	0.165	0.161	0.157	0.145	0.133	0.115	0.096	0.073	0.049	0.025	0.000
FINAL CAMBER	↑	0	1/16"	1/8"	3/16"	1/4"	5/16"	5/16"	3/8"	3/8"	7/16"	3/8"	7/16"	3/8"	3/8"	5/16"	5/16"	1/4"	3/16"	1/8"	1/16"	0

DEAD LOAD DEFLECTION TABLE FOR GIRDERS																						
0.6" Ø LOW RELAXATION STRANDS		SPAN B GIRDER 4																				
	↑	¢ BRG.	.05	.10	.15	.20	.25	.30	.35	.40	.45	.50	.55	.60	.65	.70	.75	.80	.85	.90	.95	¢ BRG.
CAMBER (GIRDER ALONE IN PLACE)	↑	0.000	0.031	0.061	0.090	0.116	0.139	0.159	0.175	0.186	0.193	0.195	0.193	0.186	0.175	0.159	0.139	0.116	0.090	0.061	0.031	0.000
* DEFLECTION DUE TO SUPERIMPOSED D.L.	↓	0.000	0.022	0.043	0.064	0.085	0.101	0.117	0.128	0.138	0.142	0.145	0.142	0.138	0.128	0.117	0.101	0.085	0.064	0.043	0.022	0.000
FINAL CAMBER	↑	0	1/8"	3/16"	5/16"	3/8"	7/16"	1/2"	9/16"	9/16"	5/8"	5/8"	5/8"	9/16"	9/16"	1/2"	7/16"	3/8"	5/16"	3/16"	1/8"	0

* INCLUDES FUTURE WEARING SURFACE
ALL VALUES ARE SHOWN IN FEET, EXCEPT "FINAL CAMBER" WHICH IS SHOWN IN INCHES

NOTES

ALL PRESTRESSING STRANDS SHALL BE 7-WIRE LOW-RELAXATION GRADE 270 STRANDS AND SHALL CONFORM TO AASHTO M203 EXCEPT FOR SAMPLING REQUIREMENTS WHICH SHALL BE IN ACCORDANCE WITH THE STANDARD SPECIFICATIONS.

ALL REINFORCING STEEL SHALL BE GRADE 60.

APPLY EPOXY PROTECTIVE COATING TO END OF GIRDER SURFACES INDICATED IN ELEVATION VIEW.

EMBEDDED PLATE "B-1" SHALL BE GALVANIZED IN ACCORDANCE WITH THE STANDARD SPECIFICATIONS.

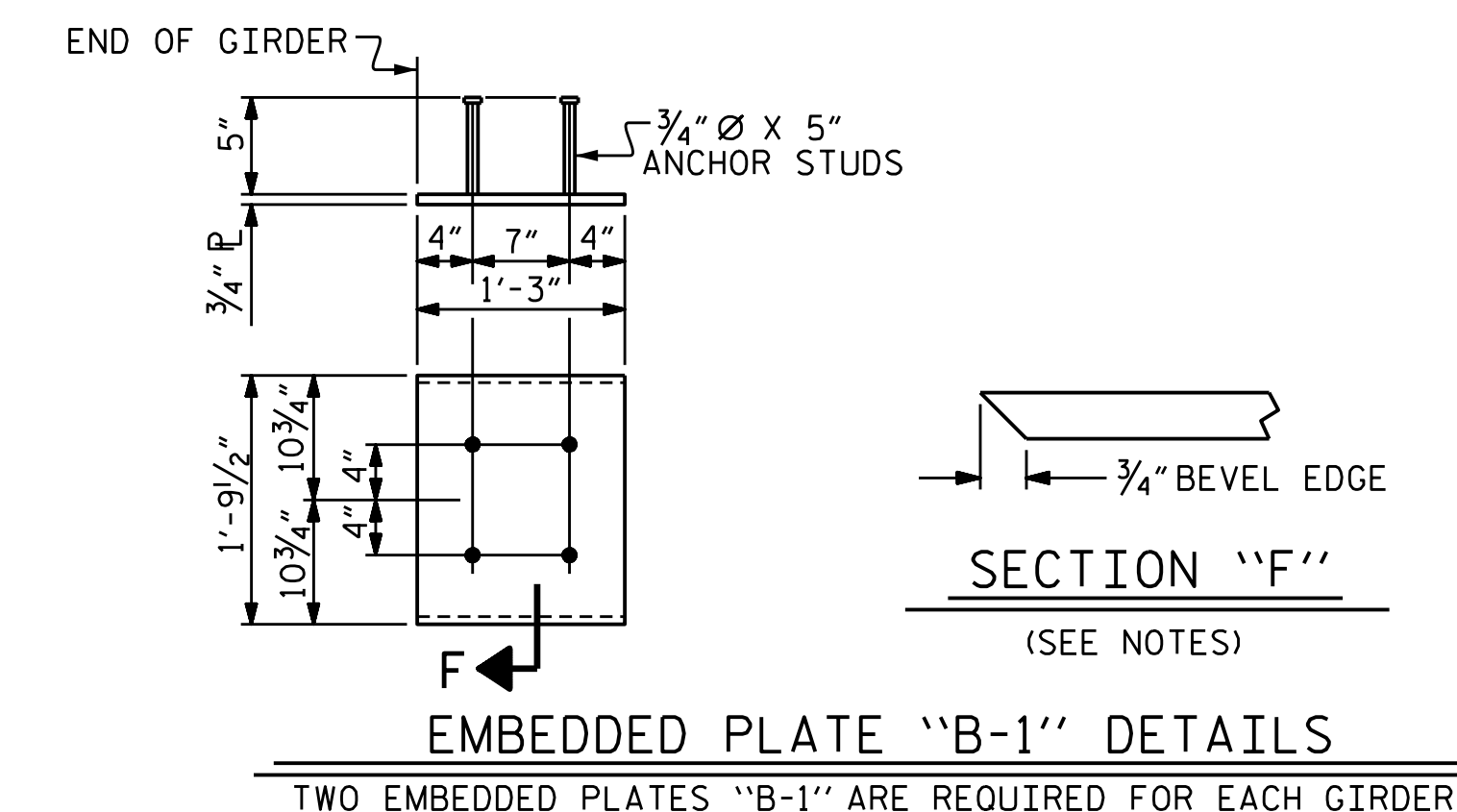
ANCHOR STUDS SHALL CONFORM TO AASHTO M169 GRADES 1010 THROUGH 1020 OR APPROVED EQUAL AND SHALL MEET THE TYPE "B" REQUIREMENTS OF SUBSECTION 7.3 OF THE ANSI/AASHTO/AWS D1.5 BRIDGE WELDING CODE.

AT ENDS OF GIRDERS TO BE EMBEDDED IN CONCRETE DIAPHRAGMS OR END WALLS, PRESTRESSING STRANDS MAY EXTEND A MAXIMUM OF 2" BEYOND THE GIRDER ENDS. OTHERWISE, PRESTRESSING STRANDS SHALL BE CUT FLUSH WITH THE GIRDER ENDS.

THE TRANSFER OF LOAD FROM THE ANCHORAGES TO THE GIRDER SHALL BE DONE WHEN CONCRETE HAS REACHED A COMPRESSIVE STRENGTH OF NOT LESS THAN 5,000 PSI FOR SPANS "A" AND "C" AND NOT LESS THAN 8,000 PSI FOR SPAN "B".

DEPENDING ON THE TYPE OF SYSTEM USED TO SUPPORT THE DECK SLAB FORMS, PRESET ANCHORS MAY BE NECESSARY IN THE PRESTRESSED CONCRETE GIRDER.

THE TOP SURFACE OF THE GIRDER, EXCLUDING THE OUTSIDE 4", SHALL BE RAKED TO A DEPTH OF 1/4", EXCEPT AS NOTED IN THE LINK SLAB AREA.



PROJECT NO. 17BP.14.R.204
JACKSON COUNTY
STATION: 24+58.00-L-

SHEET 4 OF 5

	DEPARTMENT OF TRANSPORTATION RALEIGH		DEAD LOAD DEFLECTIONS			
	DOCUMENT NOT CONSIDERED FINAL UNLESS ALL SIGNATURES COMPLETED					
TGS ENGINEERS 201 W. MARION ST STE 200 SHELBY, NC 28150 PH (704) 476-0003 CORP. LICENSE NO.: C-0275		REVISIONS		SHEET NO. S-18		
NO.	BY:	DATE:	NO.	BY:	DATE:	TOTAL SHEETS
1			3			47
2			4			

DRAWN BY : LAB DATE : 1/23
CHECKED BY : RDE DATE : 1/23
DESIGN ENGINEER OF RECORD : RDE DATE : 1/23