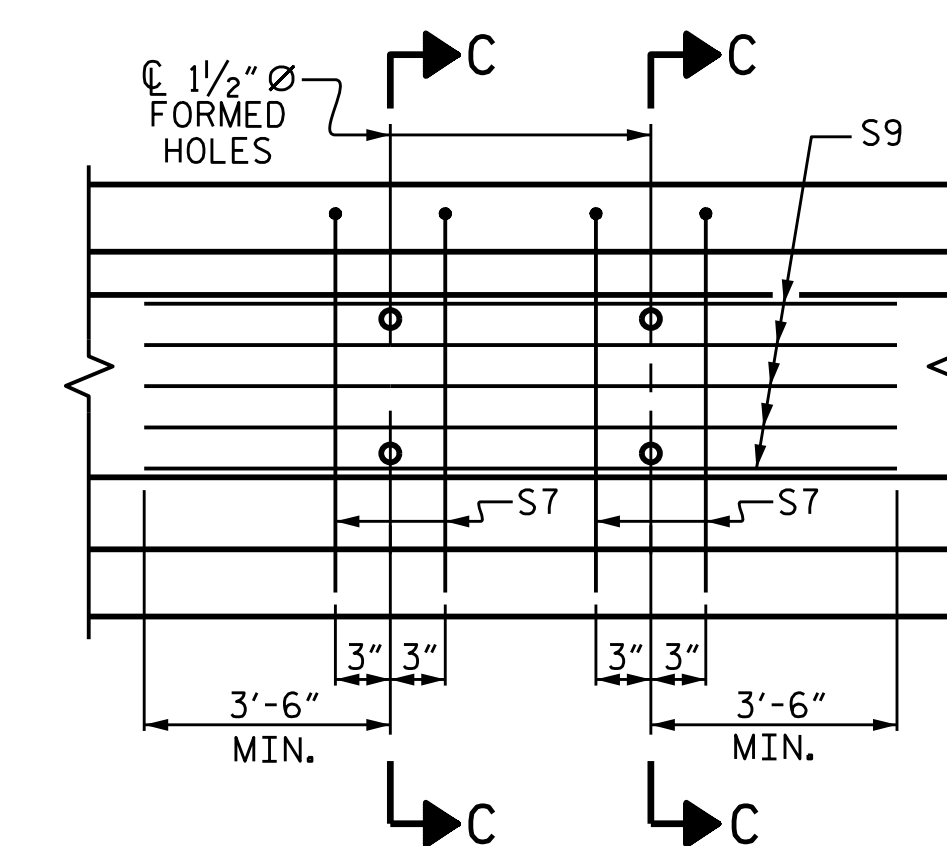


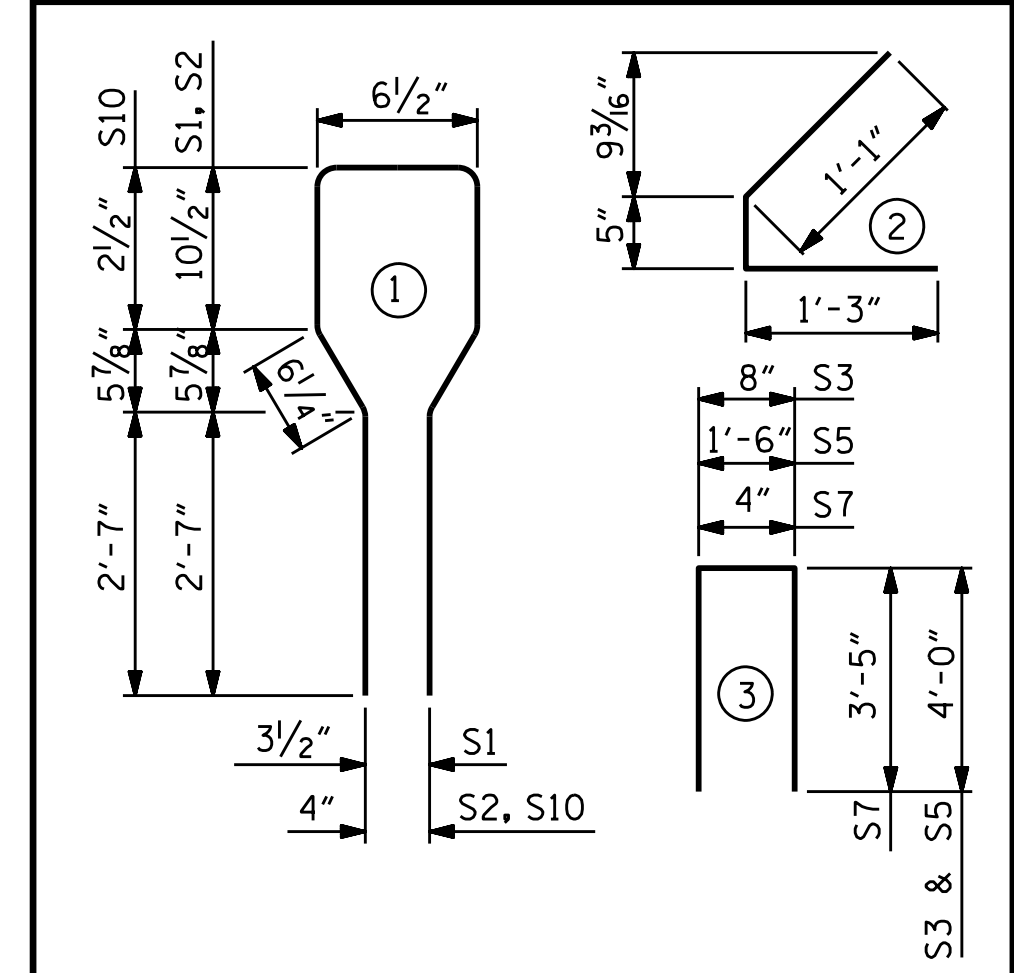
TABLE OF DIMENSIONS			
	"A"	"B"	"C"
GDR B1	75'-7 ⁷ / ₈ "	37'-9 ⁹ / ₁₆ "	1'-11 ¹¹ / ₁₆ "
GDR B2	74'-11 ³ / ₈ "	37'-5 ¹¹ / ₁₆ "	1'-7 ¹¹ / ₁₆ "
GDR B3	74'-4"	37'-2"	1'-4"
GDR B4	73'-9"	36'-10 ¹ / ₂ "	1'-0 ¹ / ₂ "



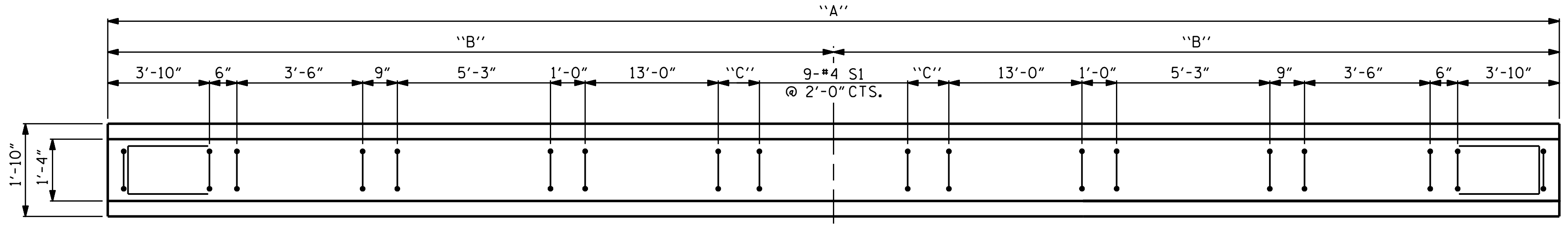
0.6" Ø L. R. GRADE 270 STRANDS		
AREA (SQUARE INCHES)	ULTIMATE STRENGTH (LBS. PER STRAND)	APPLIED PRESTRESS (LBS. PER STRAND)
0.217	58,600	43,950

REINFORCING STEEL FOR ONE GIRDER					
BAR	NUMBER	SIZE	TYPE	LENGTH	WEIGHT
S1	69	#4	1	8'-6"	392
S3	4	#4	3	8'-8"	23
S4	80	#4	2	2'-9"	147
S5	2	#4	3	9'-6"	13
EXT. GDR. S7	2	#5	3	7'-2"	15
INT. GDR. S7	4	#5	3	7'-2"	30
EXT. GDR. S8	5	#4	STR	7'-0"	23
INT. GDR. S9	5	#4	STR	17'-2"	57
S10	24	#6	STR	7'-2"	258

BAR TYPES
ALL BAR DIMENSIONS ARE OUT-TO-OUT

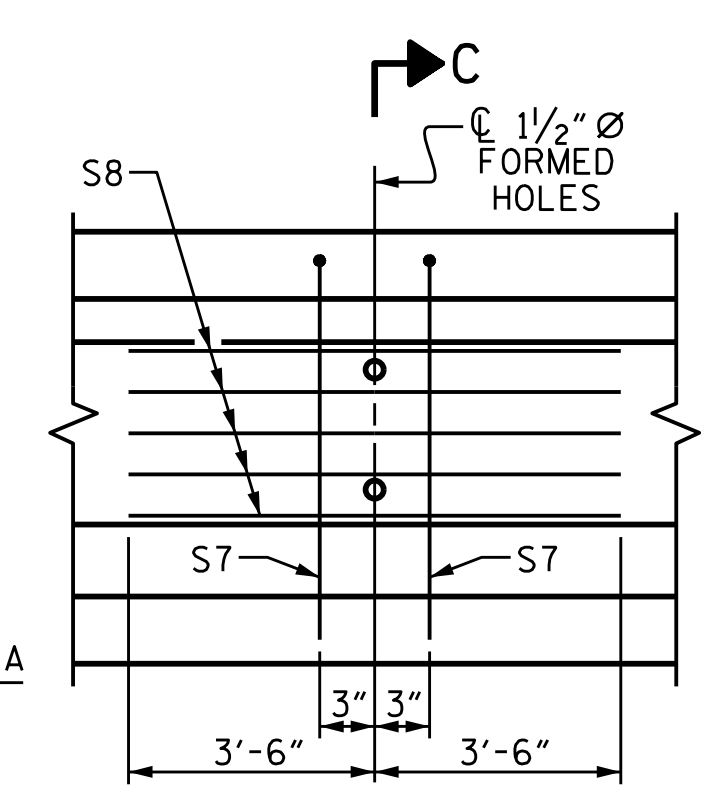


- DEBONDING LEGEND
- FULLY BONDED STRANDS
 - ▲ STRANDS DEBONDED 8'-0" FROM END OF GIRDER
 - ◼ STRANDS DEBONDED 10'-0" FROM END OF GIRDER

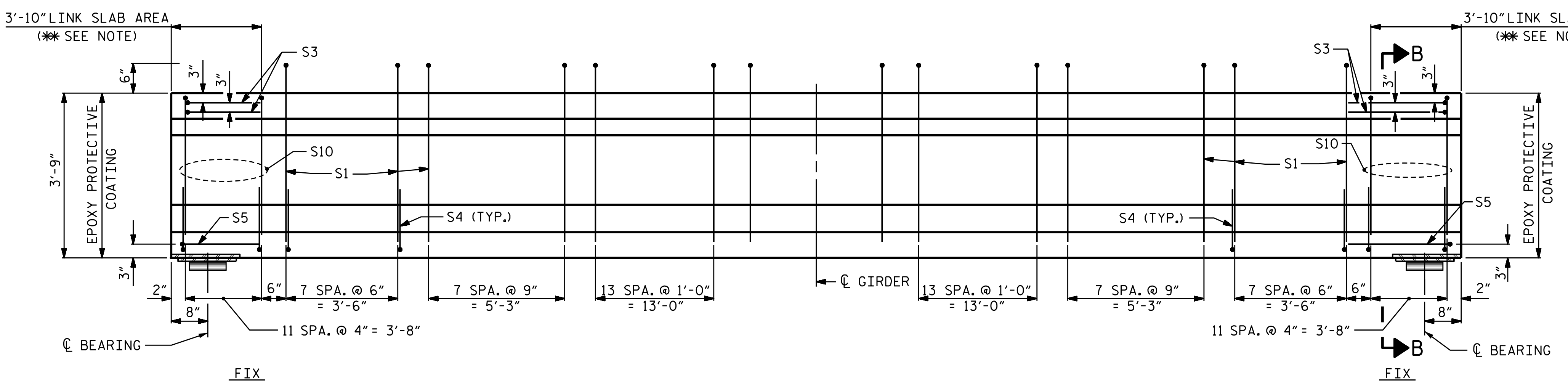


PLAN OF GIRDER

PARTIAL ELEVATION
SHOWING INTERMEDIATE DIAPHRAGM REINFORCING STEEL FOR GIRDER B2 & B3



PARTIAL ELEVATION
SHOWING INTERMEDIATE DIAPHRAGM REINFORCING STEEL FOR GIRDER B1 & B4



ELEVATION OF GIRDER

(SEE PARTIAL ELEVATION FOR ADDITIONAL "S" BARS)

DRAWN BY : ZCS DATE : 1/23
CHECKED BY : MGC DATE : 1/23
DESIGN ENGINEER OF RECORD : RDE DATE : 1/23

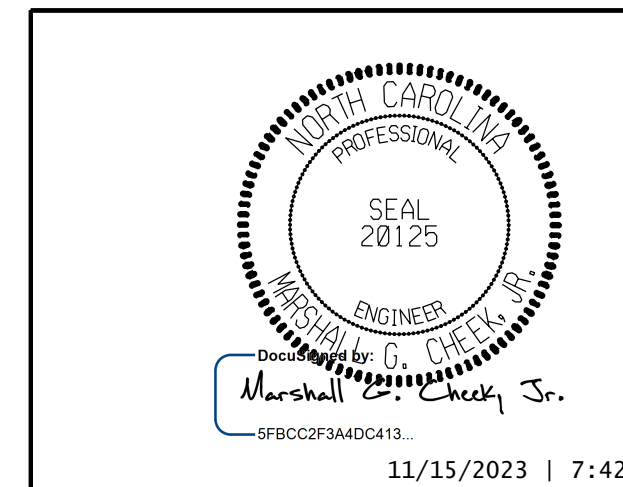
* DO NOT ROUGHEN TOP OF GIRDER IN THIS AREA

GIRDER QUANTITIES			
	REINFORCING STEEL (LB.)	10000 PSI CONCRETE (C.Y.)	0.6" Ø L. R. STRANDS (No.)
GIRDER B1	871	10.9	36
GIRDER B2	920	10.8	36
GIRDER B3	920	10.7	36
GIRDER B4	871	10.6	36

GIRDERS REQUIRED		
NUMBER	LENGTH	TOTAL LENGTH
4	VARIES	298'-7 ¹ / ₂ "

PROJECT NO. 17BP.14.R.204
JACKSON COUNTY
STATION: 24+58.00-L-

SHEET 2 OF 5



DOCUMENT NOT CONSIDERED FINAL UNLESS ALL SIGNATURES COMPLETED
TGS ENGINEERS
201 W. MARION ST STE 200
SHELBY, NC 28150
PH (704) 476-0003
CORP. LICENSE NO.: C-0275

STATE OF NORTH CAROLINA
DEPARTMENT OF TRANSPORTATION
RALEIGH
STANDARD
AASHTO TYPE III
PRESTRESSED CONCRETE
GIRDER
SPAN B

REVISIONS						SHEET NO.
NO.	BY	DATE	NO.	BY	DATE	TOTAL SHEETS
1			3			16
2			4			47

STD. NO. PCG5