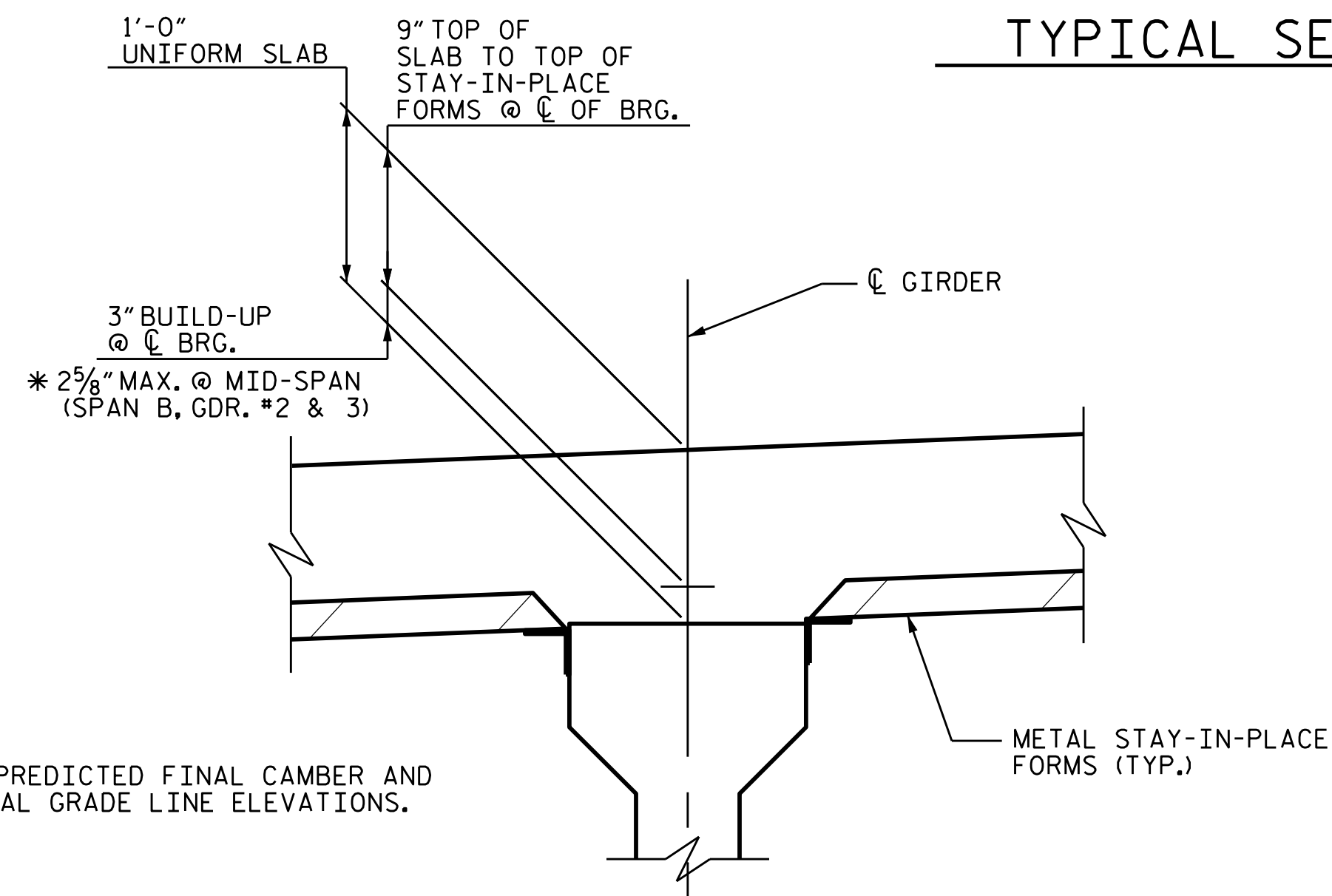


TYPICAL SECTION AT INTERMEDIATE DIAPHRAGMS



DETAIL A

\* RADIAL DIMENSION

Δ THEORETICAL DIMENSIONS SHOWN ARE RADIAL THROUGH WORK POINTS.

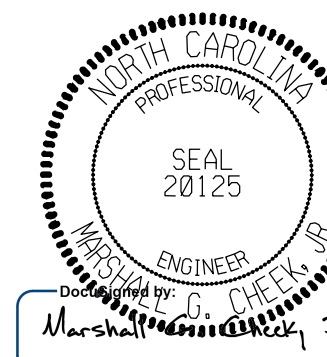
\* BASED ON PREDICTED FINAL CAMBER AND THEORETICAL GRADE LINE ELEVATIONS.

PROJECT NO. 17BP.14.R.204

JACKSON COUNTY

STATION: 24+58.00-L-

SHEET 2 OF 4



11/15/2023 | 7:42 AM EST

STATE OF NORTH CAROLINA  
DEPARTMENT OF TRANSPORTATION  
RALEIGH  
SUPERSTRUCTURE

TYPICAL SECTION

DRAWN BY : JLA DATE : 9/22  
CHECKED BY : MGC DATE : 9/22  
DESIGN ENGINEER OF RECORD : ZCS DATE : 1/23

DOCUMENT NOT CONSIDERED FINAL  
UNLESS ALL SIGNATURES COMPLETED

TGS ENGINEERS  
201 W. MARION ST STE 200  
SHELBY, NC 28150  
PH (704) 476-0003  
CORP. LICENSE NO.: C-0275

REVISIONS						SHEET NO.
NO.	BY	DATE	NO.	BY	DATE	S-8
1			3			TOTAL SHEETS
2			4			47