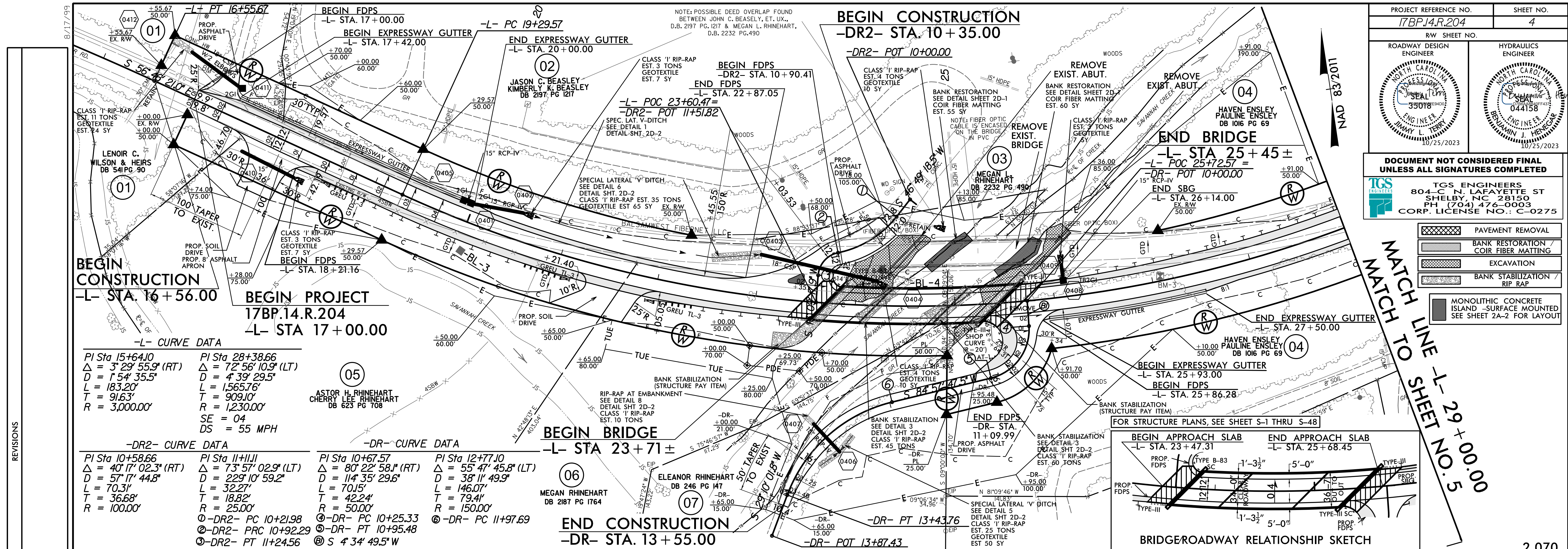


PROJECT REFERENCE NO. 17BP.14.R.204	SHEET NO. 4
ROADWAY DESIGN ENGINEER TGS ENGINEERS	HYDRAULICS ENGINEER TGS ENGINEERS
PROFESSIONAL ENGINEER JIMMY L. TERRY 044158 10/25/2023	PROFESSIONAL ENGINEER PAULINE ENSLEY 044158 10/25/2023

**DOCUMENT NOT CONSIDERED FINAL
UNLESS ALL SIGNATURES COMPLETED**

TGS ENGINEERS
804-C N. LAFAYETTE ST
SHELBY, NC 28150
PH: (704) 476-0003
CORP. LICENSE NO.: C-0275

- PAVEMENT REMOVAL
- BANK RESTORATION / COIR FIBER MATTING
- EXCAVATION
- BANK STABILIZATION / RIP RAP
- MONOLITHIC CONCRETE ISLAND - SURFACE MOUNTED
SEE SHEET 2A-2 FOR LAYOUT



-L- CURVE DATA

PI Sta 15+64.10 Δ = 3° 29' 55.9" (RT) D = 154' 35.5" L = 183.20' T = 91.63' R = 3,000.00'	PI Sta 28+38.66 Δ = 7° 56' 10.9" (LT) D = 4° 39' 29.5" L = 1565.76' T = 909.10' R = 1,230.00' SE = 04 DS = 55 MPH
--	--

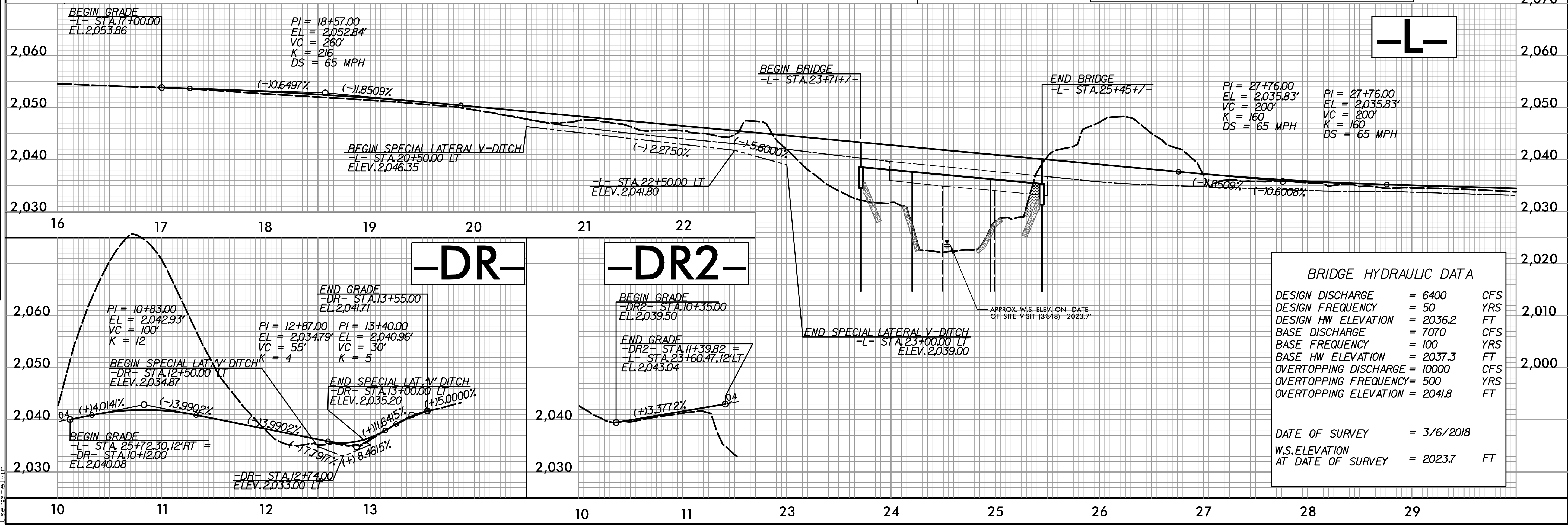
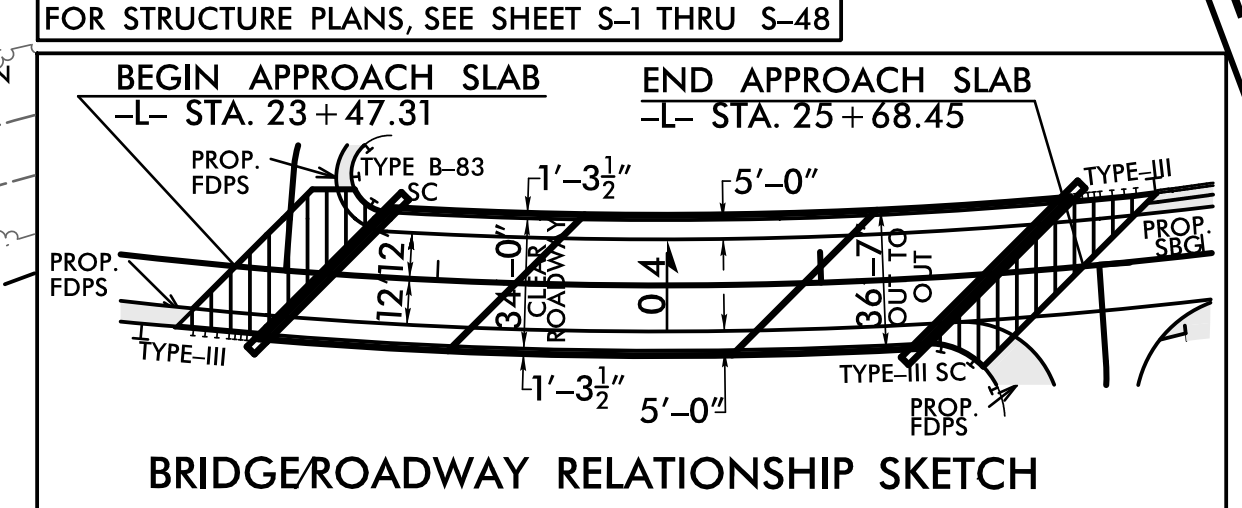
-DR2- CURVE DATA

PI Sta 10+58.66 Δ = 40° 17' 02.3" (RT) D = 57° 17' 44.8" L = 70.31' T = 36.68' R = 100.00'	PI Sta 11+11.11 Δ = 73° 57' 02.9" (LT) D = 229° 10' 59.2" L = 32.27' T = 18.82' R = 25.00'	PI Sta 10+67.57 Δ = 80° 22' 58.1" (RT) D = 114° 35' 29.6" L = 70.15' T = 42.24' R = 50.00'	PI Sta 12+77.10 Δ = 55° 47' 45.8" (LT) D = 38° 11' 49.9" L = 146.07' T = 79.41' R = 150.00'
---	---	---	--

① -DR2- PC 10+21.98 ② -DR- PC 10+25.33
③ -DR2- PRC 10+92.29 ④ -DR- PC 10+95.48
⑤ -DR2- PT 11+24.56 ⑥ -DR- PC 11+97.69

-DR- CURVE DATA

PI = 18+57.00 EL = 2,052.84' VC = 260' K = 216 DS = 65 MPH	PI = 12+87.00 EL = 2,034.79' VC = 55' K = 4	PI = 13+40.00 EL = 2,040.96' VC = 30' K = 5
--	--	--



BRIDGE HYDRAULIC DATA

DESIGN DISCHARGE	= 6400	CFS
DESIGN FREQUENCY	= 50	YRS
DESIGN HW ELEVATION	= 2036.2	FT
BASE DISCHARGE	= 7070	CFS
BASE FREQUENCY	= 100	YRS
BASE HW ELEVATION	= 2037.3	FT
OVERTOPPING DISCHARGE	= 10000	CFS
OVERTOPPING FREQUENCY	= 500	YRS
OVERTOPPING ELEVATION	= 2041.8	FT

DATE OF SURVEY = 3/6/2018
W.S. ELEVATION AT DATE OF SURVEY = 2023.7 FT

REVISIONS
 10/20/2023 Division 14 - 2017.185910 Jackson 4910032.Roadway.Proj.N.490032.Rdr_psh_04.dgn
 01
 02
 03
 04
 05
 06
 07