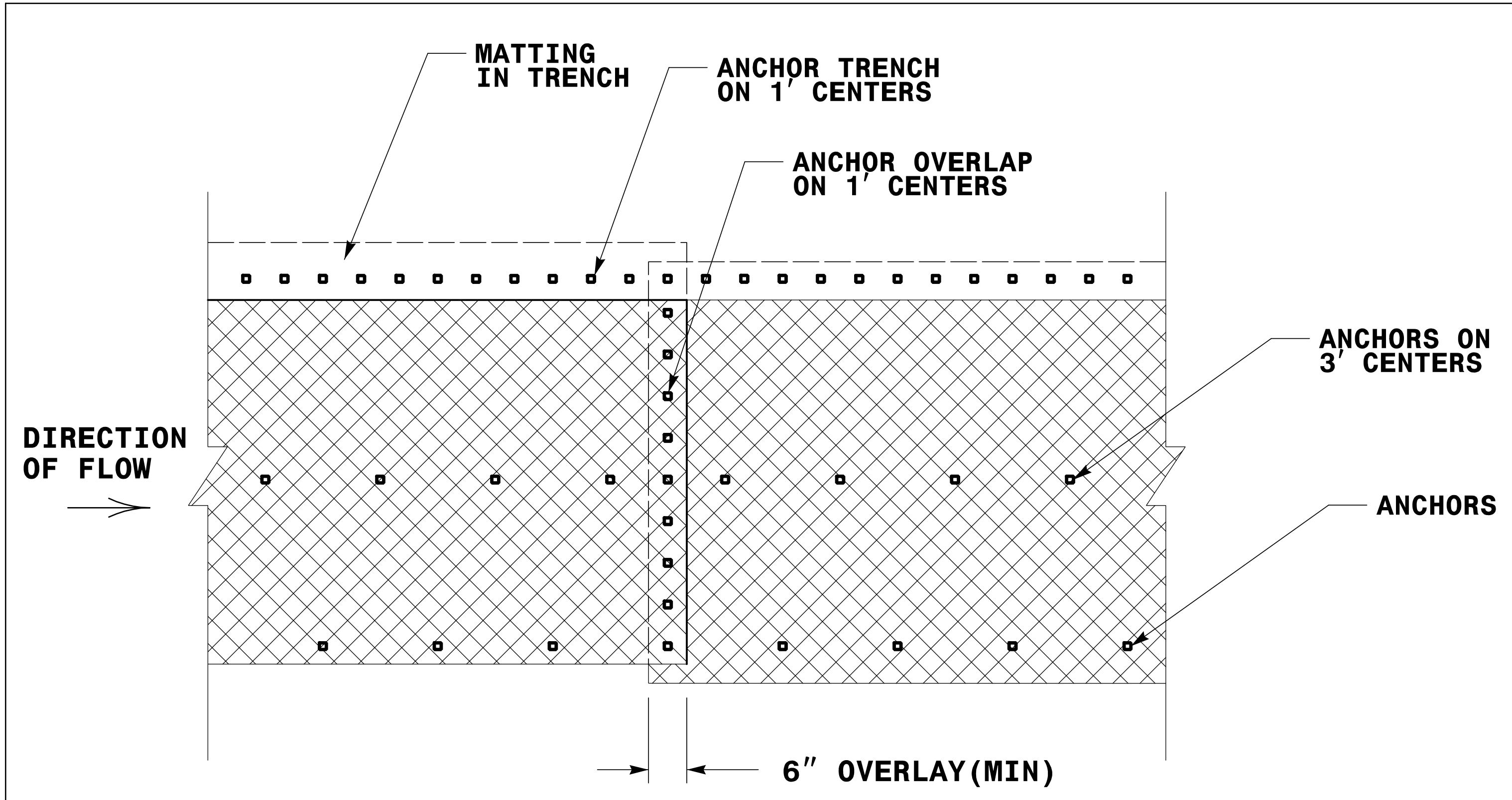


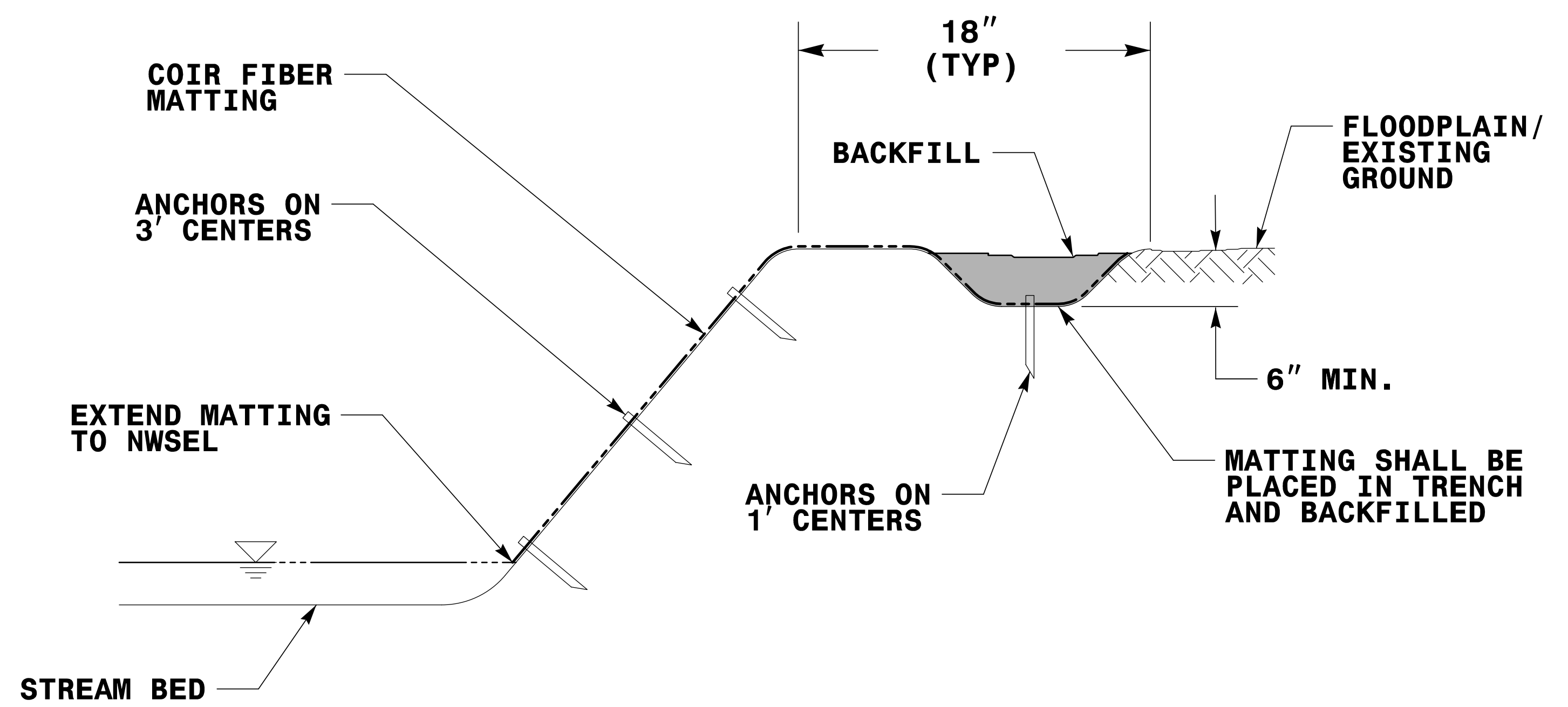
8/17/99

REVISIONS

X:\14\2022\Division 14 - 2017\B5910 - Jackson - 490032\Roadway\Proj\490032_Rdy_Detail_20-1 (Bank Restoration).dgn
11/14/2022
K:\14\2022\Division 14 - 2017\B5910 - Jackson - 490032\Roadway\Proj\490032_Rdy_Detail_20-1 (Bank Restoration).dgn



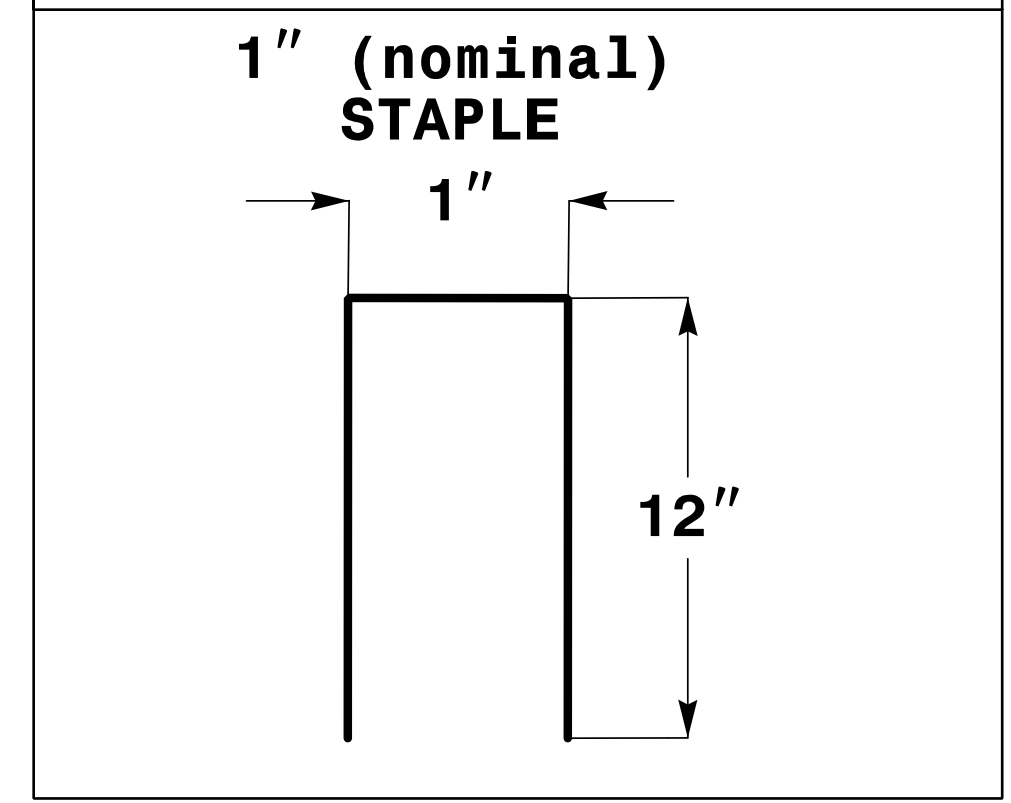
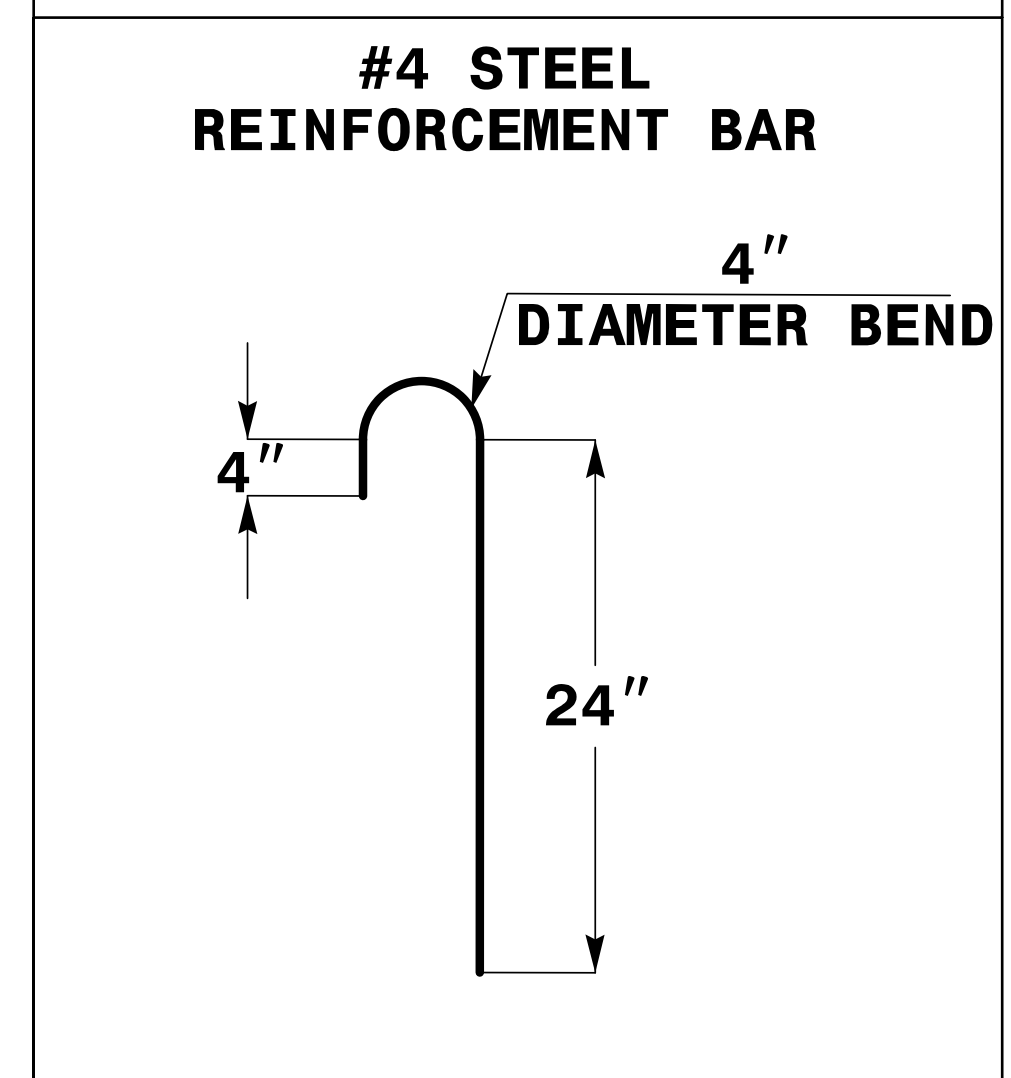
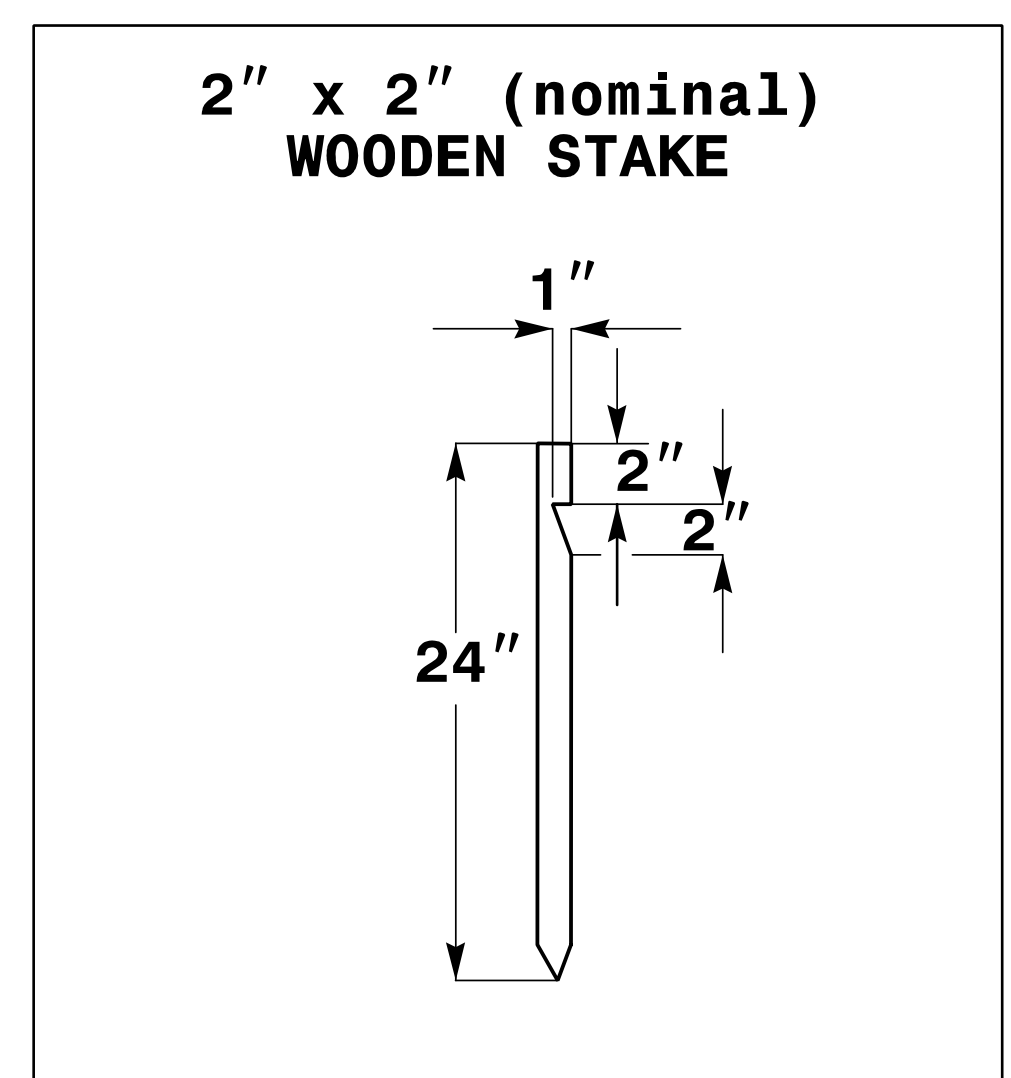
PLAN VIEW



TYPICAL CROSS SECTION

BANK RESTORATION DETAIL

NOT TO SCALE



ANCHOR OPTIONS

- NOTES:**
- 1) IN AREAS TO BE MATTED, ALL SEEDING, SOIL AMENDMENTS, AND SOIL PREPARATION MUST BE COMPLETED IN ACCORDANCE WITH THE PROJECT SPECIFICATIONS PRIOR TO PLACEMENT OF COIR FIBER MATTING.
 - 2) REBAR OR STAPLES MAY BE USED IN PLACE OF WOODEN STAKES AS DIRECTED BY THE ENGINEER.

PROJECT REFERENCE NO. 17BPJ4.R.204	SHEET NO. 2D-1
RW SHEET NO.	
HYDRAULICS ENGINEER	
DOCUMENT NOT CONSIDERED FINAL UNLESS ALL SIGNATURES COMPLETED	
TGS ENGINEERS 804-C N. LAFAYETTE ST SHELBY, NC 28150 PH: (704) 476-0003 CORP. LICENSE NO.: C-0275	

SEE PLAN VIEW FOR LOCATIONS