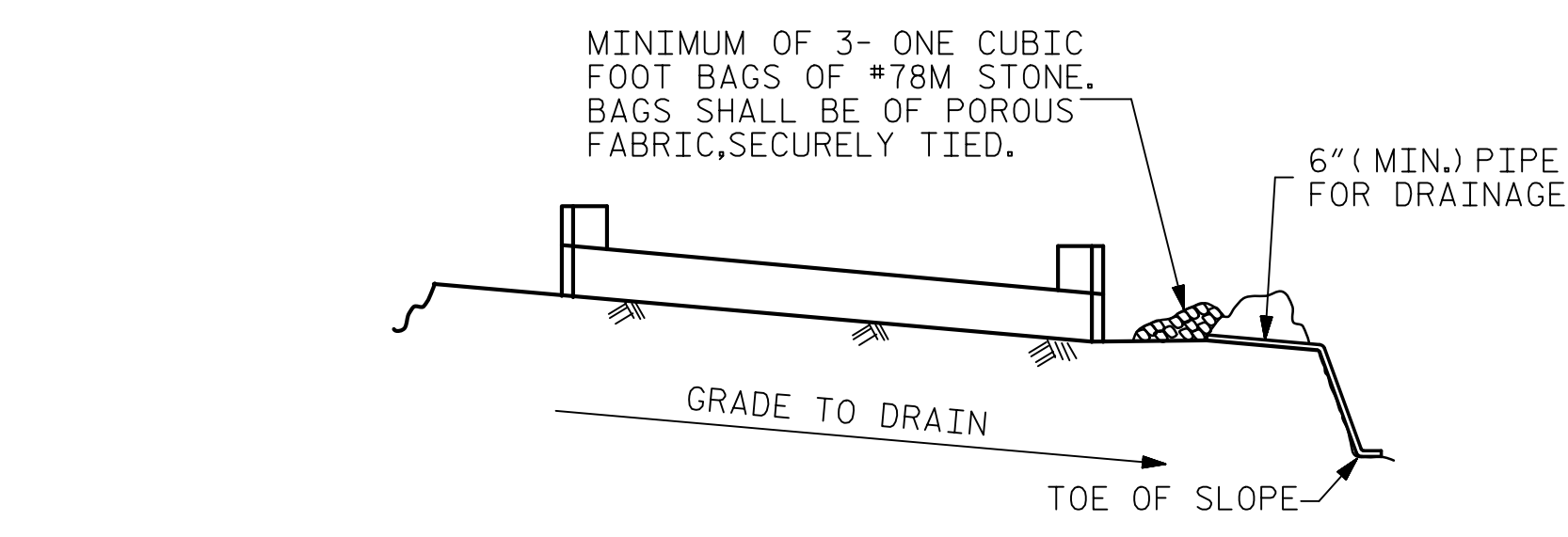


SECTION "A-A"

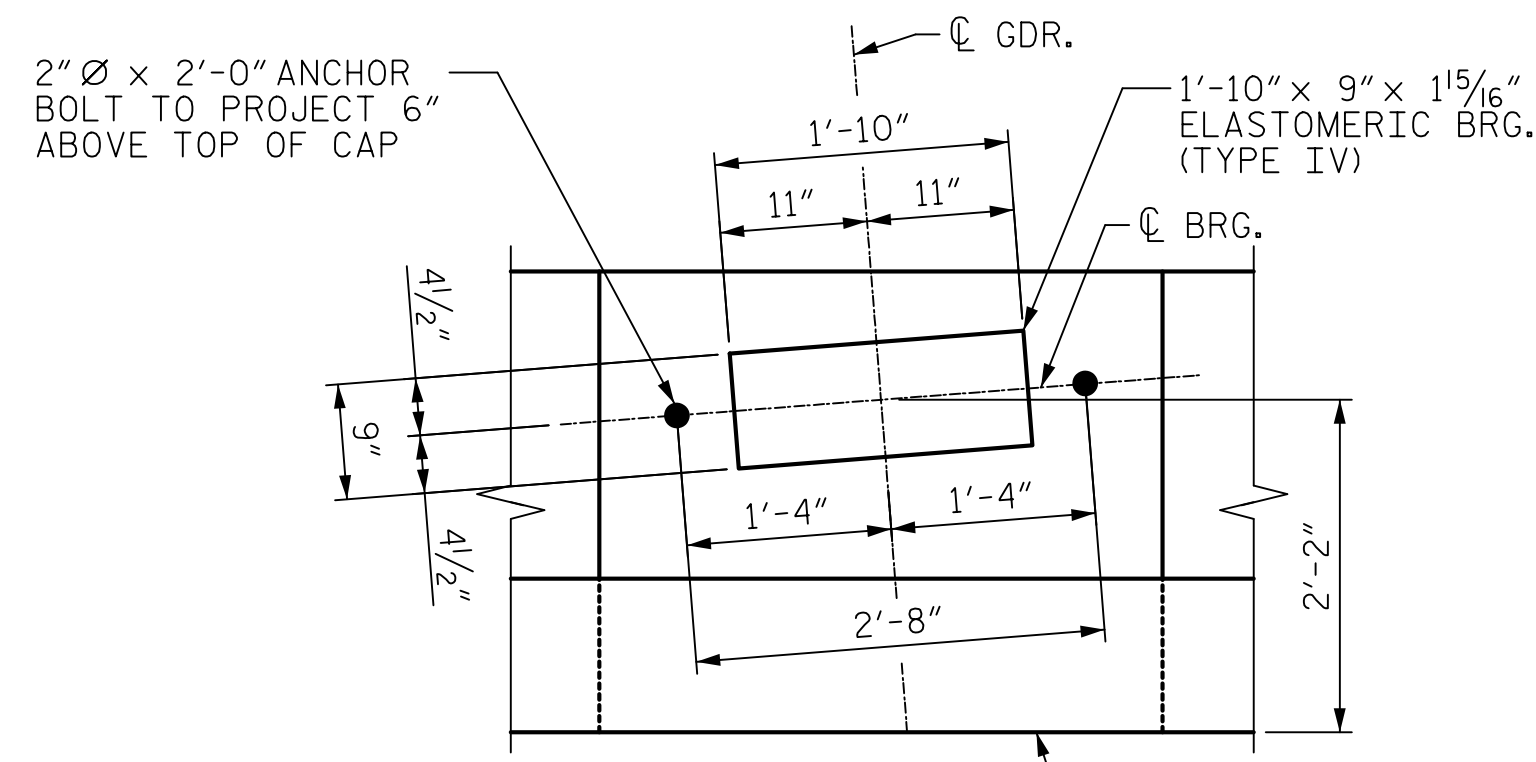


BAGGED STONE AND PIPE SHALL BE PLACED IMMEDIATELY AFTER COMPLETION OF END BENT EXCAVATION. PIPE MAY BE EITHER CONCRETE, CORRUGATED STEEL, CORRUGATED ALUMINUM ALLOY, OR CORRUGATED PLASTIC. PERFORATED PIPE WILL NOT BE ALLOWED.

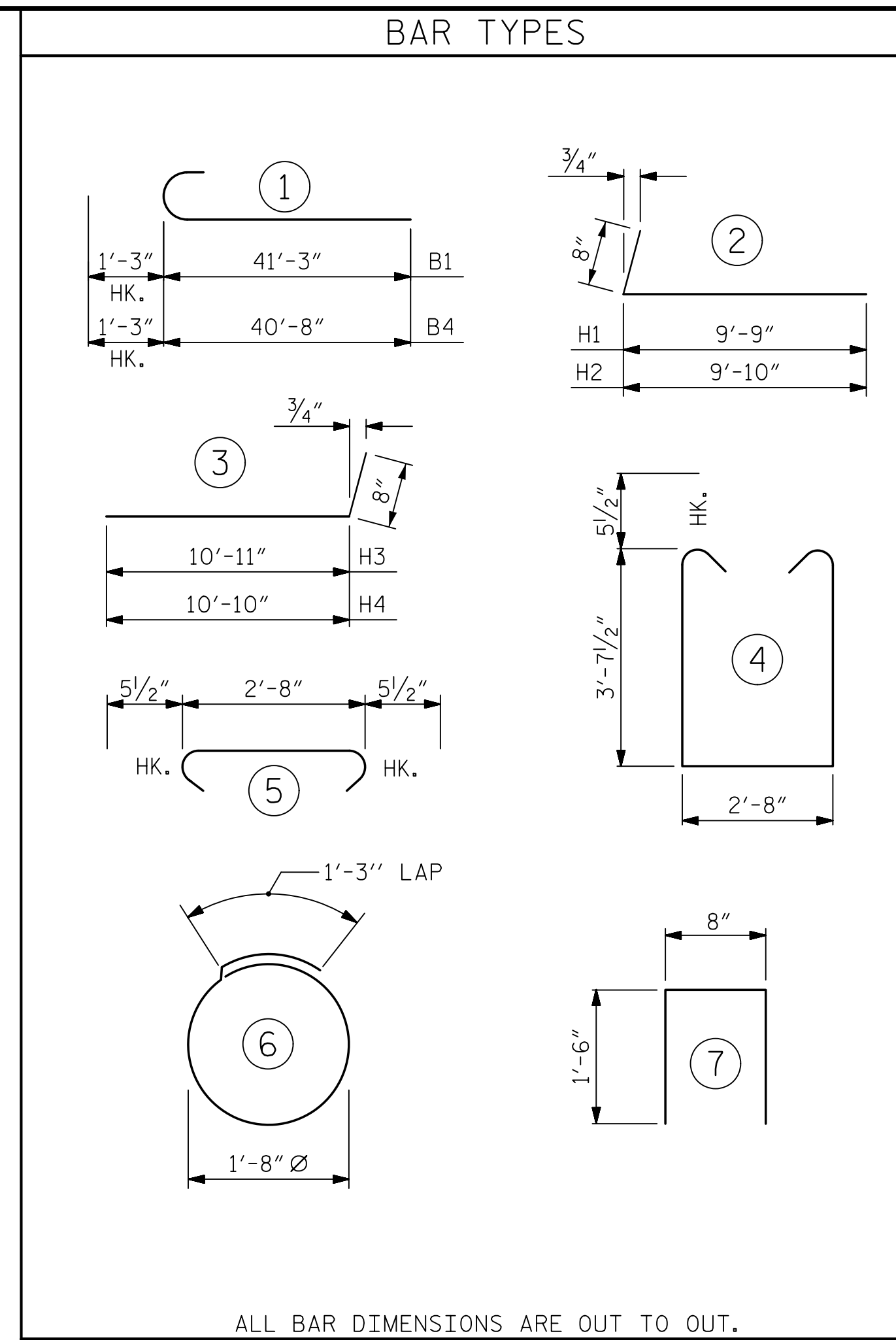
BAGGED STONE SHALL REMAIN IN PLACE UNTIL THE ENGINEER DIRECTS THAT IT BE REMOVED. THE CONTRACTOR SHALL REMOVE AND DISPOSE OF SILT ACCUMULATIONS AT BAGGED STONE WHEN SO DIRECTED BY THE ENGINEER. BAGS SHALL BE REMOVED AND REPLACED WHENEVER THE ENGINEER DETERMINES THAT THEY HAVE DETERIORATED AND LOST THEIR EFFECTIVENESS.

NO SEPARATE PAYMENT WILL BE MADE FOR THIS WORK AND THE ENTIRE COST OF THIS WORK SHALL BE INCLUDED IN THE UNIT CONTRACT PRICE BID FOR THE SEVERAL PAY ITEMS.

TEMPORARY DRAINAGE AT END BENT

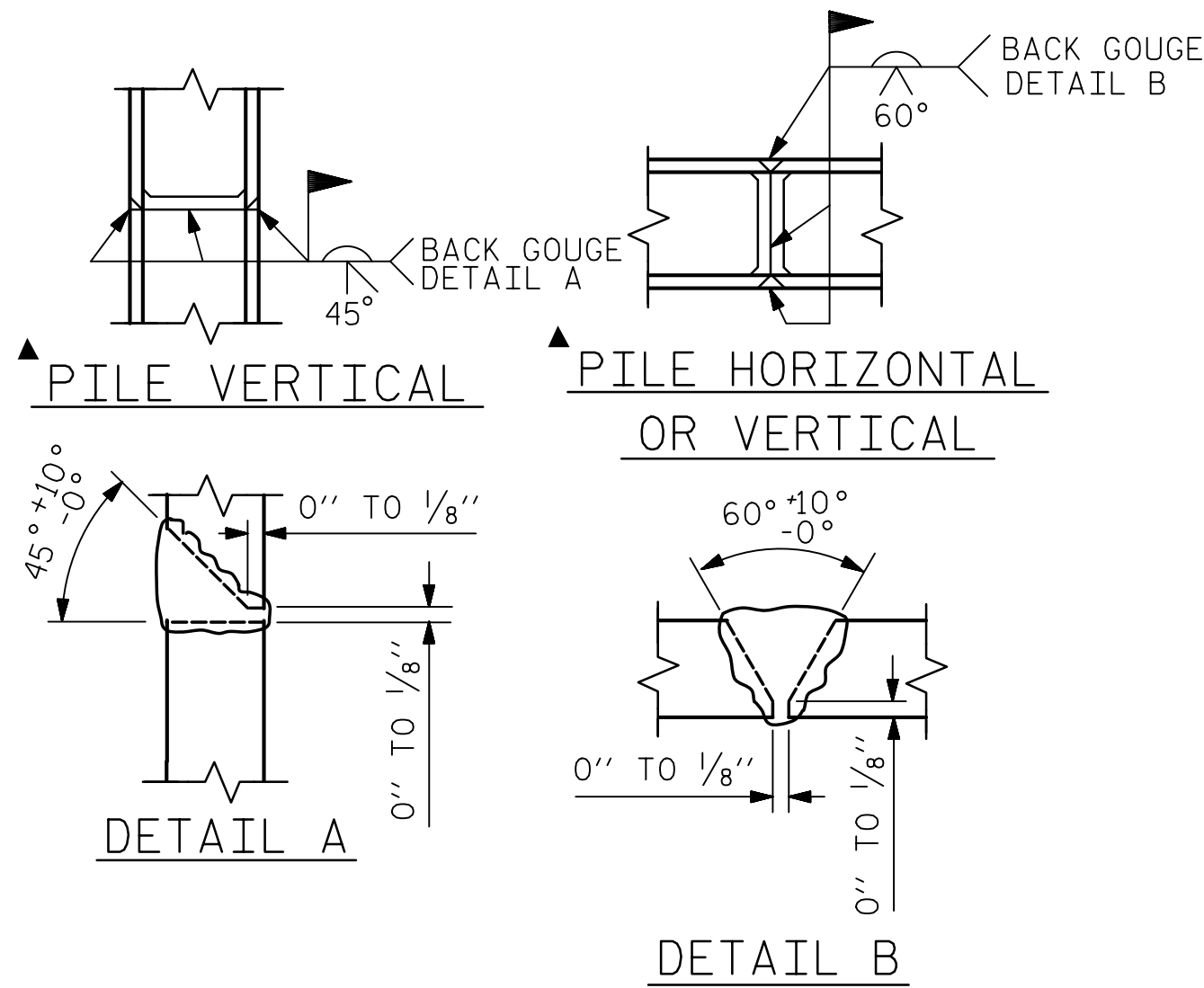


DETAIL "A"  
(TYPICAL AT EACH BEARING)

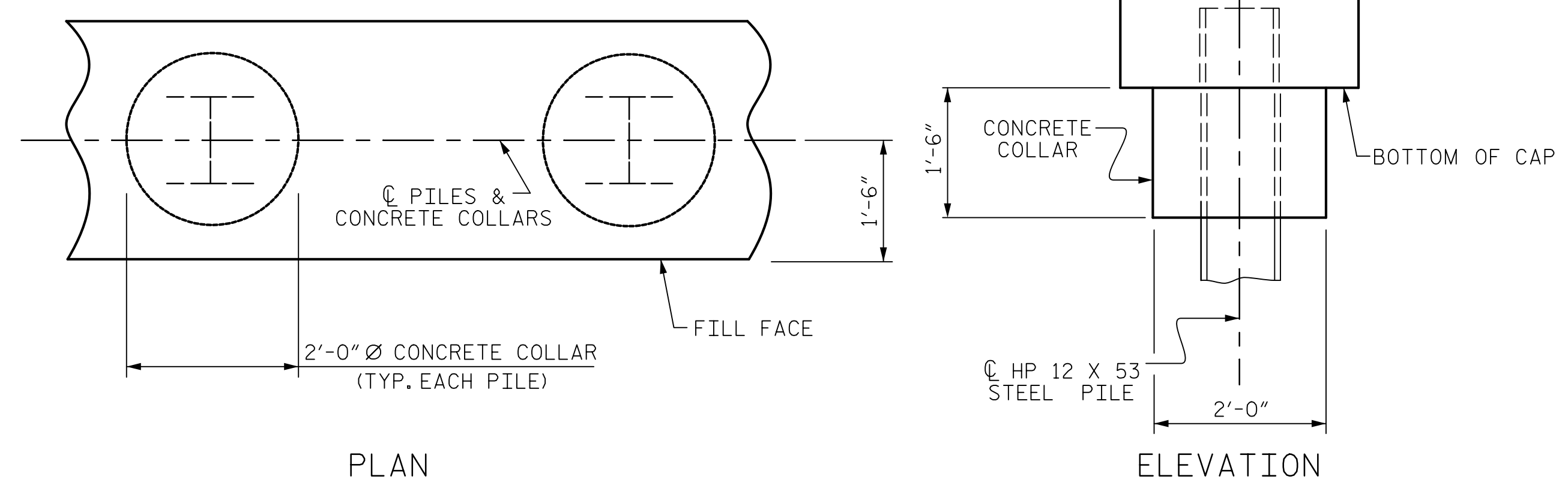


ALL BAR DIMENSIONS ARE OUT TO OUT.

BILL OF MATERIAL					
END BENT #1					
BAR	NO.	SIZE	TYPE	LENGTH	WEIGHT
B1	8	#9		42'-6"	1156
B2	12	#5	STR	40'-2"	503
B3	8	#4	STR	39'-10"	213
B4	8	#9		41'-11"	1140
B5	20	#4	STR	2'-8"	36
H1	15	#5	2	10'-5"	163
H2	15	#5	2	10'-6"	164
H3	20	#5	3	11'-7"	242
H4	20	#5	3	11'-6"	240
K1	8	#4	STR	2'-7"	14
K2	20	#4	STR	39'-11"	533
S1	142	#5	4	10'-10"	1604
S2	142	#5	5	3'-7"	531
S3	52	#4	6	6'-6"	226
U1	72	#4	7	3'-8"	176
V1	144	#5	STR	8'-3"	1239
V2	30	#5	STR	9'-9"	305
V3	32	#5	STR	9'-7"	320
REINFORCING STEEL					8805 LBS.
CLASS A CONCRETE BREAKDOWN					
POUR #1 CAP & LOWER PART OF WINGS & COLLARS					40.5 C.Y.
POUR #2 BACKWALL & UPPER PART OF WINGS					17.6 C.Y.
TOTAL CLASS A CONCRETE					58.1 C.Y.



PILE SPLICE DETAILS  
▲ POSITION OF PILE DURING WELDING.



CORROSION PROTECTION FOR STEEL PILES DETAIL

**Mead & Hunt**  
111 E. Hargett Street  
Suite 300  
Raleigh, NC 27601  
919-714-8670  
meadhunt.com  
NC License No. F-1235

Seal of Jack Hobson, Professional Engineer, No. 043177, dated 10/5/2023.

PROJECT NO. U-5808  
UNION COUNTY  
STATION: 55+00.96 -L2-  
SHEET 4 OF 4

STATE OF NORTH CAROLINA  
DEPARTMENT OF TRANSPORTATION  
RALEIGH  
SUBSTRUCTURE  
END BENT 1  
DETAILS

DRAWN BY: C.C. CAMPBELL DATE: 05/10/23  
CHECKED BY: J.S. HOBSON DATE: 06/21/23  
DESIGN ENGINEER OF RECORD: J.S. HOBSON DATE: 08/30/23

DOCUMENT NOT CONSIDERED FINAL UNLESS ALL SIGNATURES COMPLETED

REVISIONS						SHEET NO.
NO.	BY:	DATE:	NO.	BY:	DATE:	S-41
1			3			TOTAL SHEETS
2			4			56