

NOTES

FOR BRIDGE MOUNTED 72" CHAIN LINK FENCE, SEE SPECIAL PROVISIONS.

BOLTS SHALL CONFORM TO THE REQUIREMENTS OF ASTM A307 AND NUTS SHALL CONFORM TO THE REQUIREMENTS OF AASHTO M291. BOLTS, NUTS, AND WASHERS SHALL BE GALVANIZED. AT THE CONTRACTORS OPTION, STAINLESS STEEL BOLTS, NUTS, AND WASHERS MAY BE USED AS AN ALTERNATE FOR THE 3/4" Ø GALVANIZED BOLTS, NUTS, AND WASHERS. THEY SHALL CONFORM TO OR EXCEED THE MECHANICAL REQUIREMENTS OF ASTM A307. THE USE OF THIS ALTERNATE SHALL BE APPROVED BY THE ENGINEER.

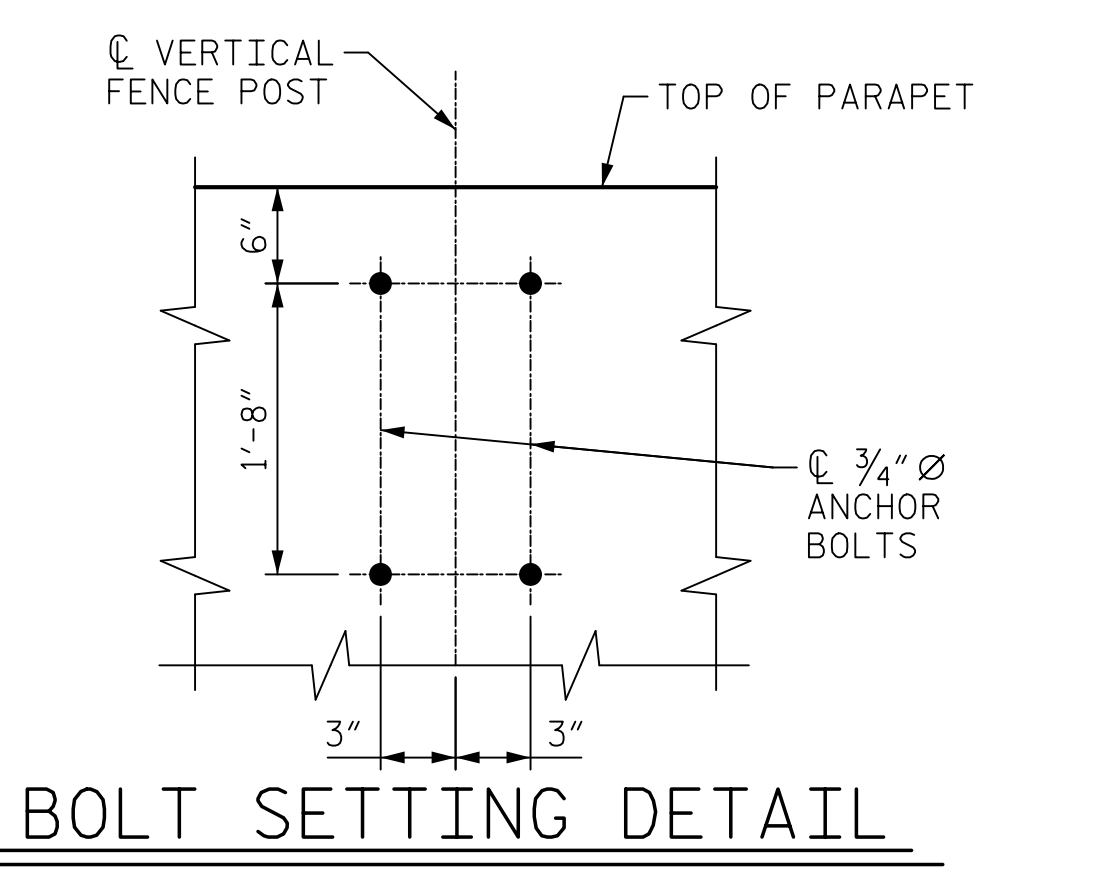
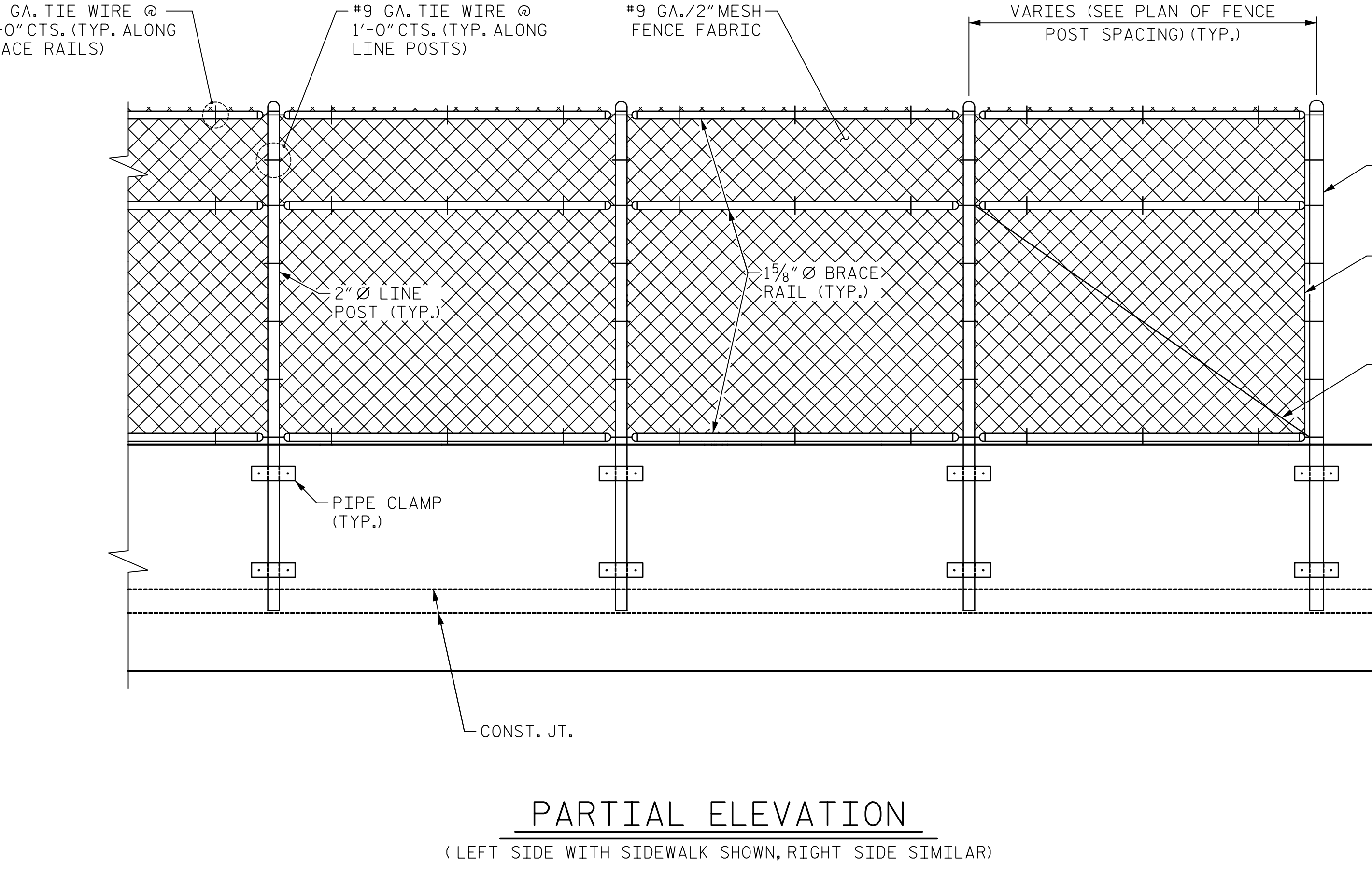
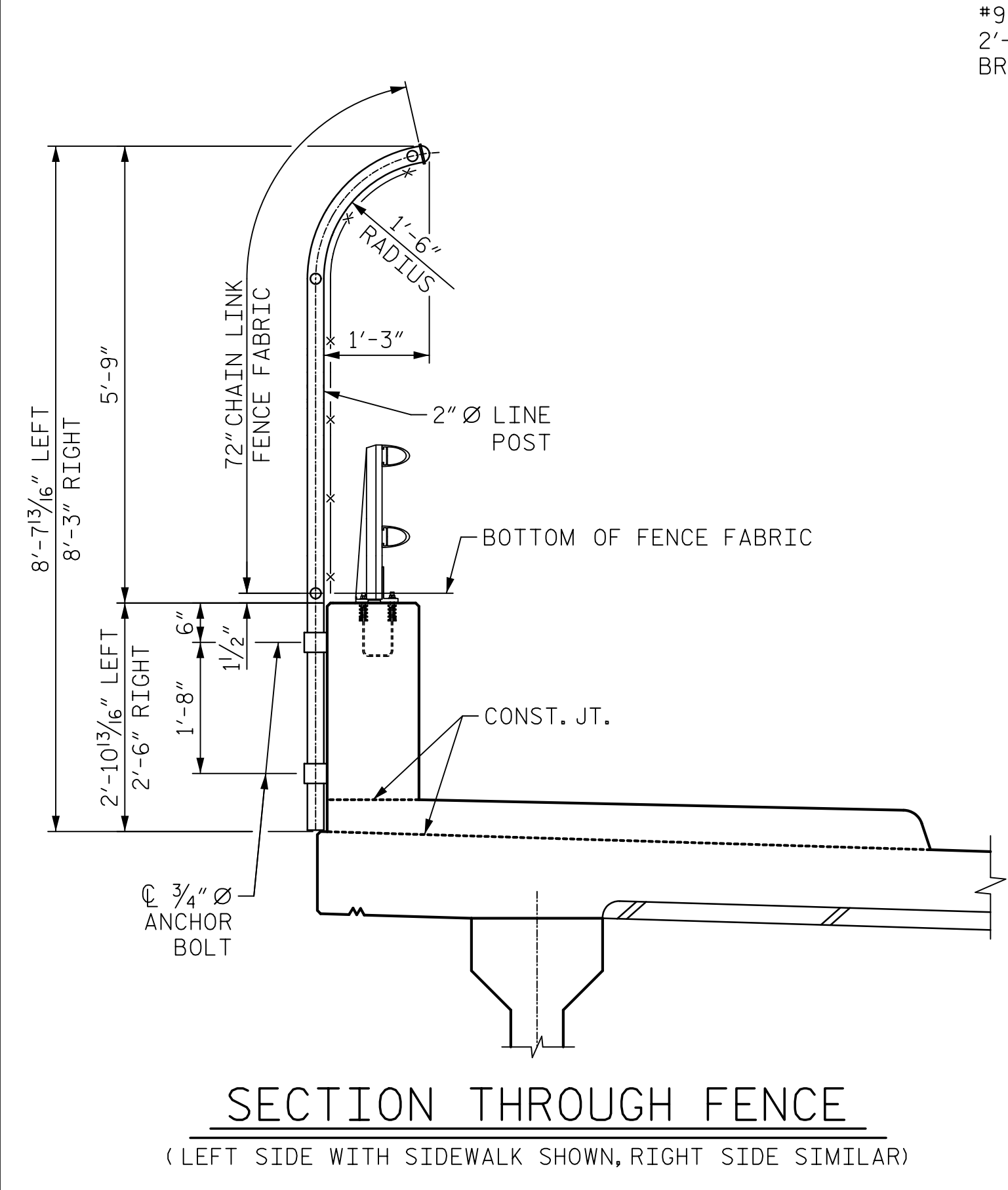
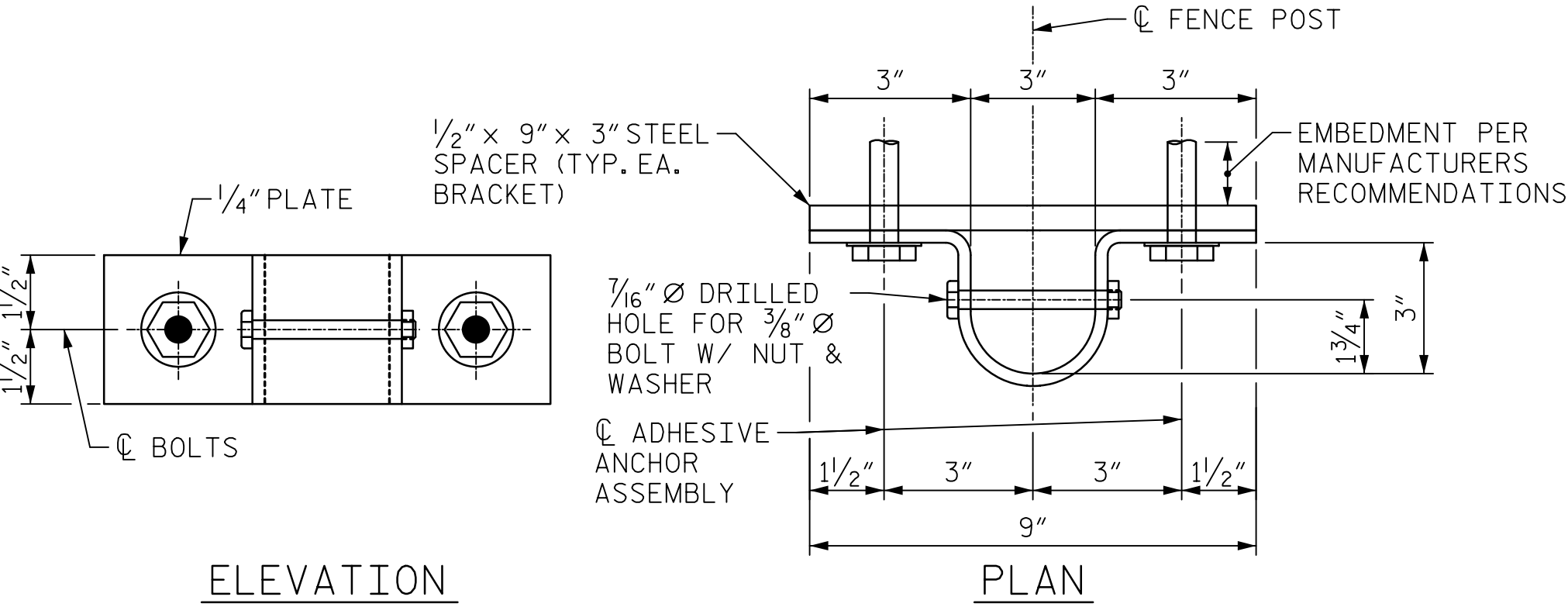
LEVEL ONE FIELD TESTING IS REQUIRED AND THE YIELD LOAD OF THE ANCHOR BOLTS IS 10.0 KIPS. FOR ADHESIVELY ANCHORED ANCHOR BOLTS, SEE THE STANDARD SPECIFICATIONS.

ALL FENCE MATERIAL SHALL MEET THE REQUIREMENTS OF SECTION 1050 OF THE STANDARD SPECIFICATIONS. GALVANIZE ALL STEEL PARTS AND HARDWARE IN ACCORDANCE WITH ARTICLE 1076 OF THE STANDARD SPECIFICATIONS.

FENCE POST LOCATIONS SHALL BE SHIFTED, AS NECESSARY, TO MAINTAIN 1'-0" MINIMUM DISTANCE FROM ANCHOR BOLT TO JOINTS IN PARAPET.

DIMENSIONS TAKEN ALONG OUTSIDE FACE OF PARAPET.

WELDING SHALL BE DONE IN ACCORDANCE WITH ARTICLE 1072-20 OF THE STANDARD SPECIFICATIONS.



Mead & Hunt

111 E. Hargett Street
Suite 300
Raleigh, NC 27601
919-714-8670
meadhunt.com
NC License No. F-1235



PROJECT NO. U-5808
UNION COUNTY
STATION: 55+00.96 -L2-

STATE OF NORTH CAROLINA
DEPARTMENT OF TRANSPORTATION
RALEIGH
SUPERSTRUCTURE

**BRIDGE MOUNTED 72"
CHAIN LINK FENCE**

DRAWN BY : J.S. HOBSON DATE : 03/17/22
CHECKED BY : C.C. CAMPBELL DATE : 06/22/23
DESIGN ENGINEER OF RECORD : J.S. HOBSON DATE : 08/30/23

DOCUMENT NOT CONSIDERED FINAL UNLESS ALL SIGNATURES COMPLETED

REVISIONS						SHEET NO.
NO.	BY:	DATE:	NO.	BY:	DATE:	S-31
1			3			TOTAL SHEETS
2			4			56