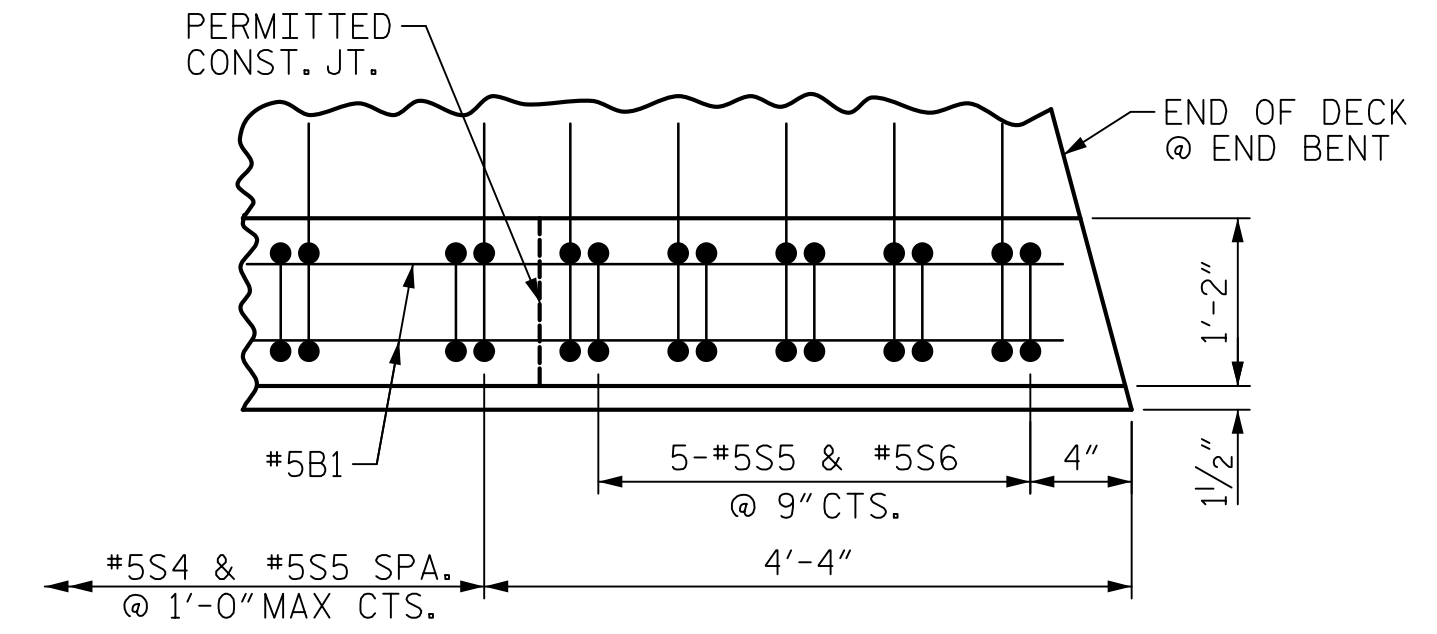
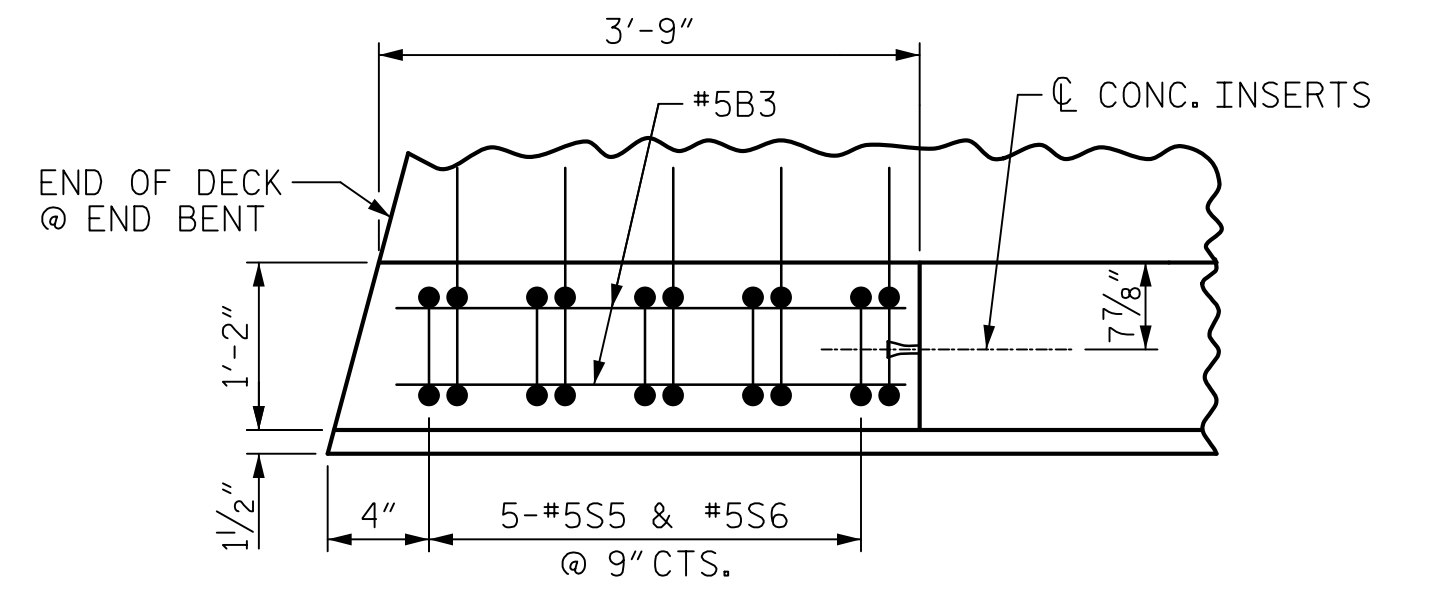


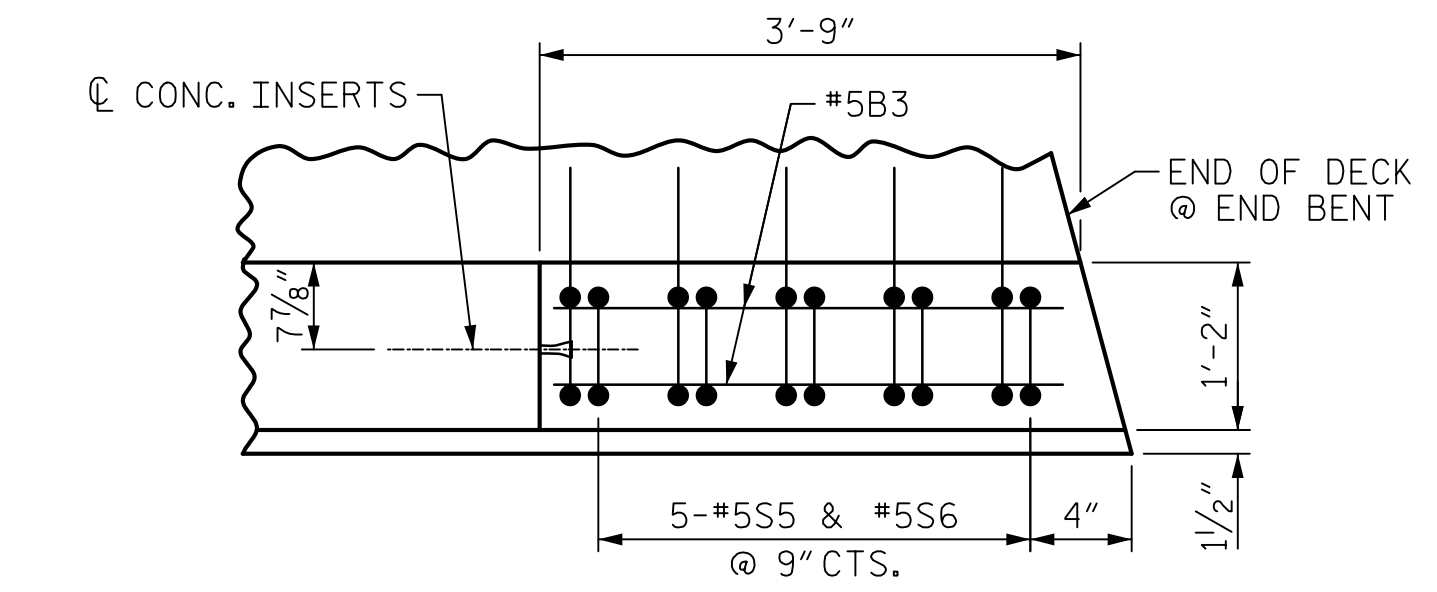
PLAN OF RIGHT PARAPET
(END BENT 1)



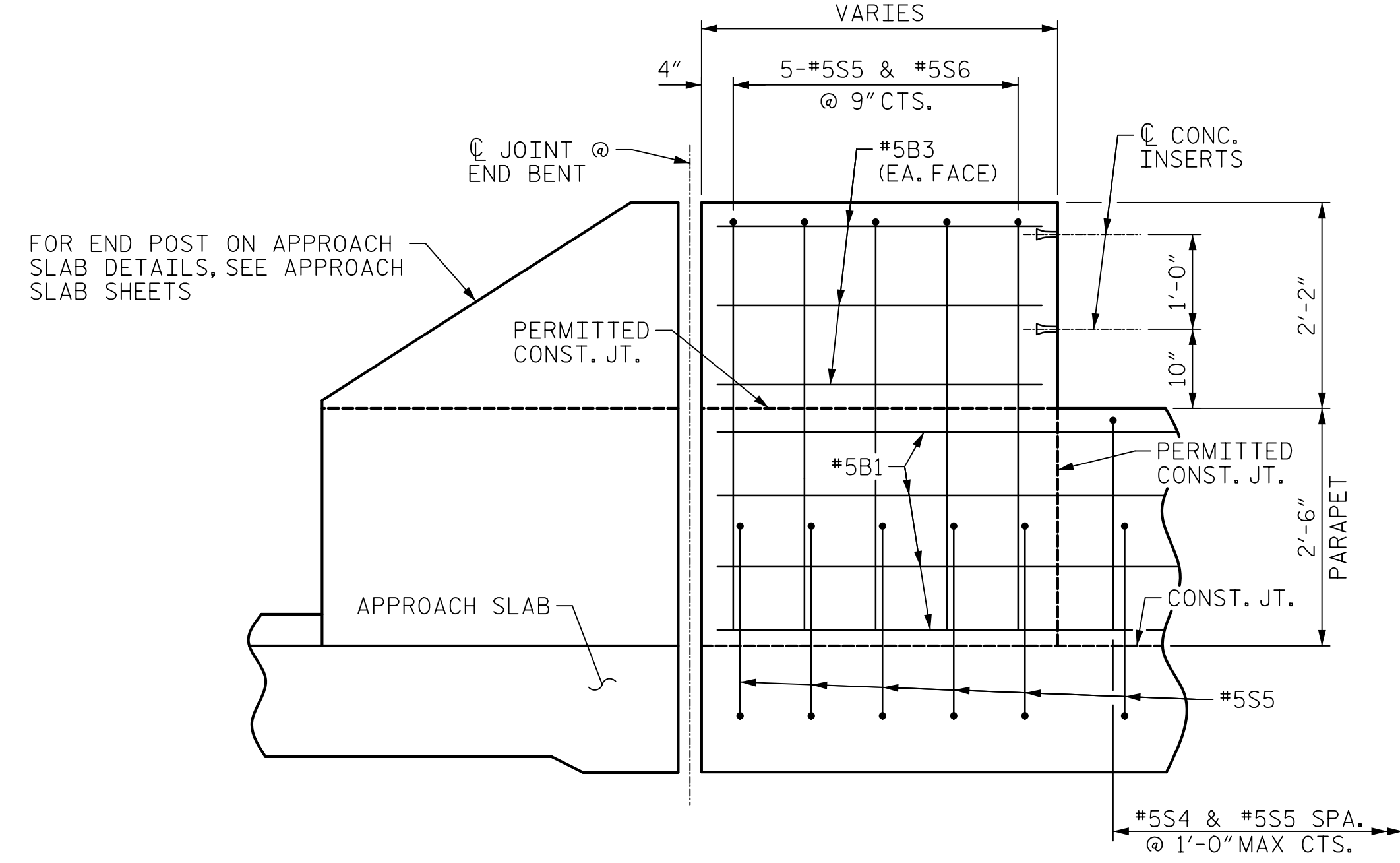
PLAN OF RIGHT PARAPET
(END BENT 2)



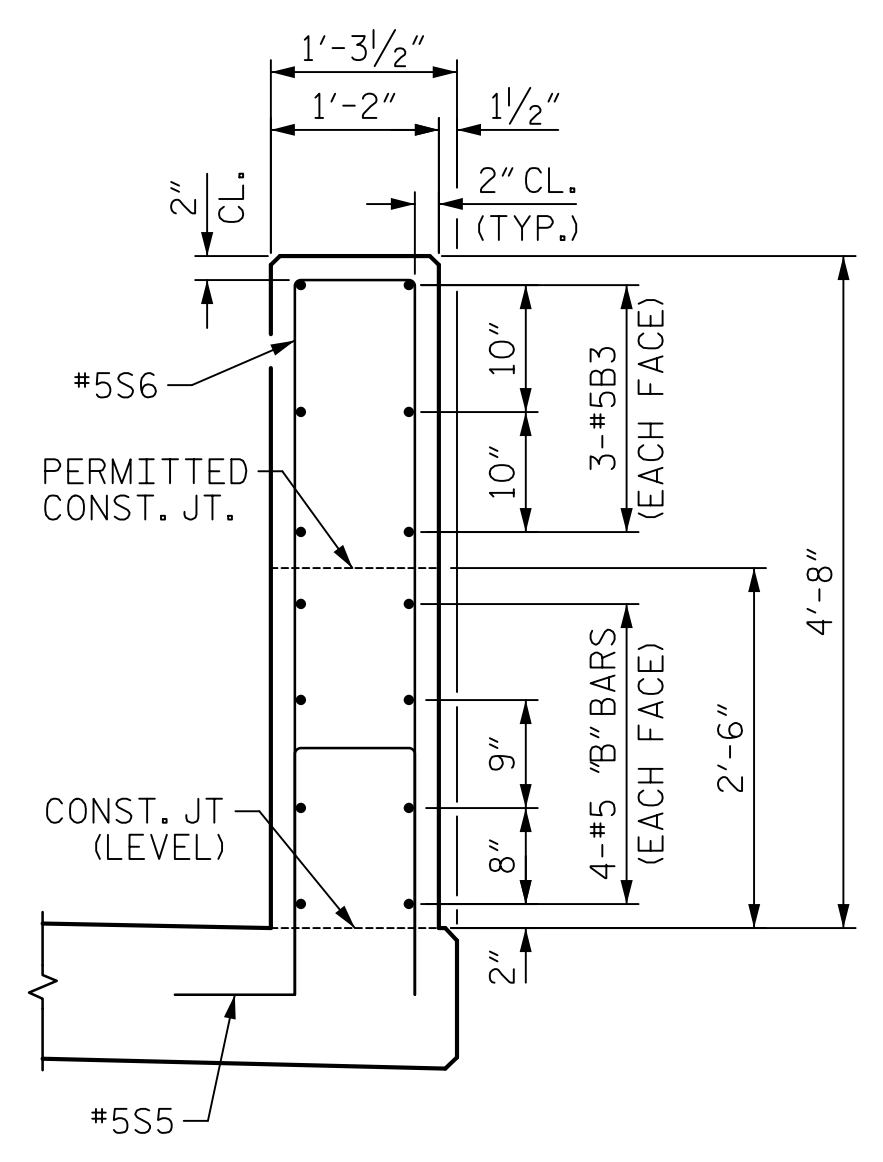
PLAN OF RIGHT END POST
(END BENT 1)



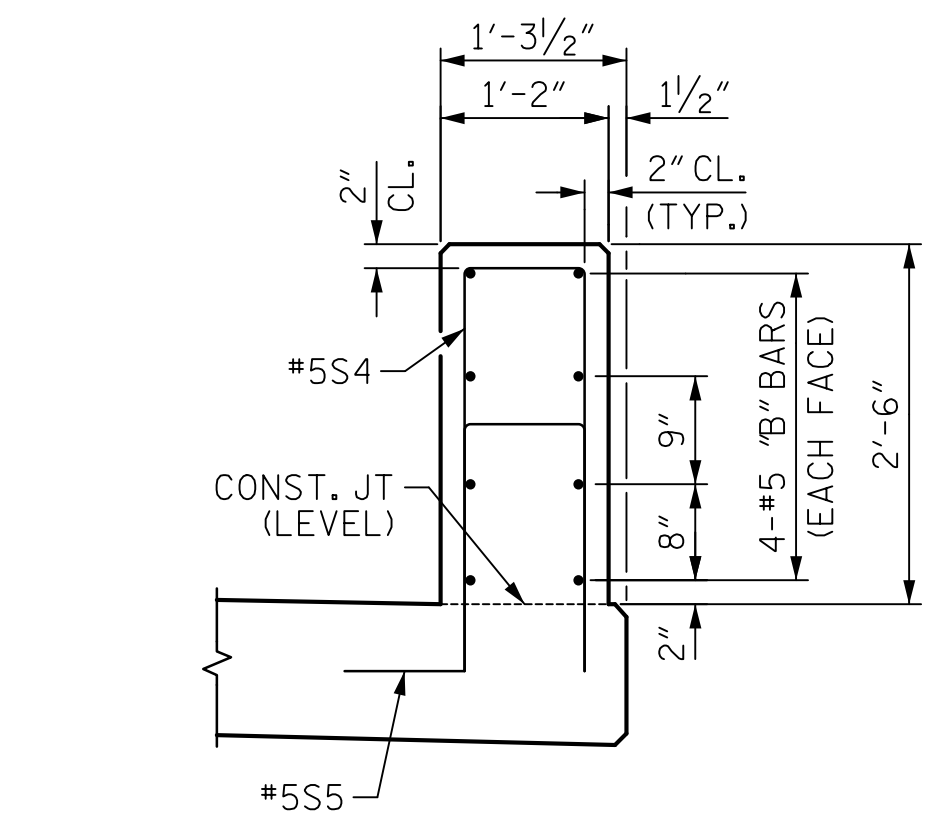
PLAN OF RIGHT END POST
(END BENT 2)



RIGHT ELEVATION
(END BENT 1 SHOWN, END BENT 2 SIMILAR)



RIGHT END VIEW
(END BENT 1 SHOWN, END BENT 2 SIMILAR)

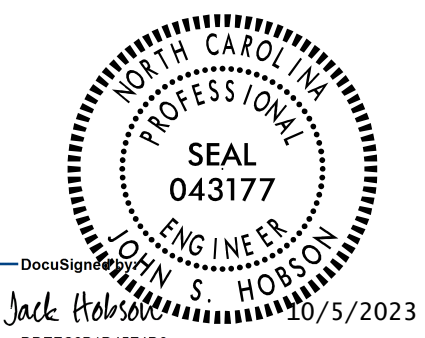


RIGHT PARAPET TYPICAL SECTION
(END BENT 1 SHOWN, END BENT 2 SIMILAR)

PARAPET AND END POST FOR TWO BAR RAIL

FOR GUARDRAIL ANCHORAGE DETAILS AND LOCATION, SEE "GUARDRAIL ANCHORAGE DETAILS FOR METAL RAILS" SHEET.

Mead & Hunt
111 E. Hargett Street
Suite 300
Raleigh, NC 27601
919-714-8670
meadhunt.com
NC License No. F-1235



PROJECT NO. U-5808
UNION COUNTY
STATION: 55+00.96 -L2-
SHEET 2 OF 3

STATE OF NORTH CAROLINA
DEPARTMENT OF TRANSPORTATION
RALEIGH
SUPERSTRUCTURE
CONCRETE PARAPET
AND END POST DETAILS

DRAWN BY : J.S. HOBSON DATE : 04/14/22
CHECKED BY : C.C. CAMPBELL DATE : 06/20/23
DESIGN ENGINEER OF RECORD : J.S. HOBSON DATE : 08/30/23

DOCUMENT NOT CONSIDERED
FINAL UNLESS ALL
SIGNATURES COMPLETED

REVISIONS						SHEET NO.
NO.	BY:	DATE:	NO.	BY:	DATE:	S-25
1			3			TOTAL SHEETS
2			4			56