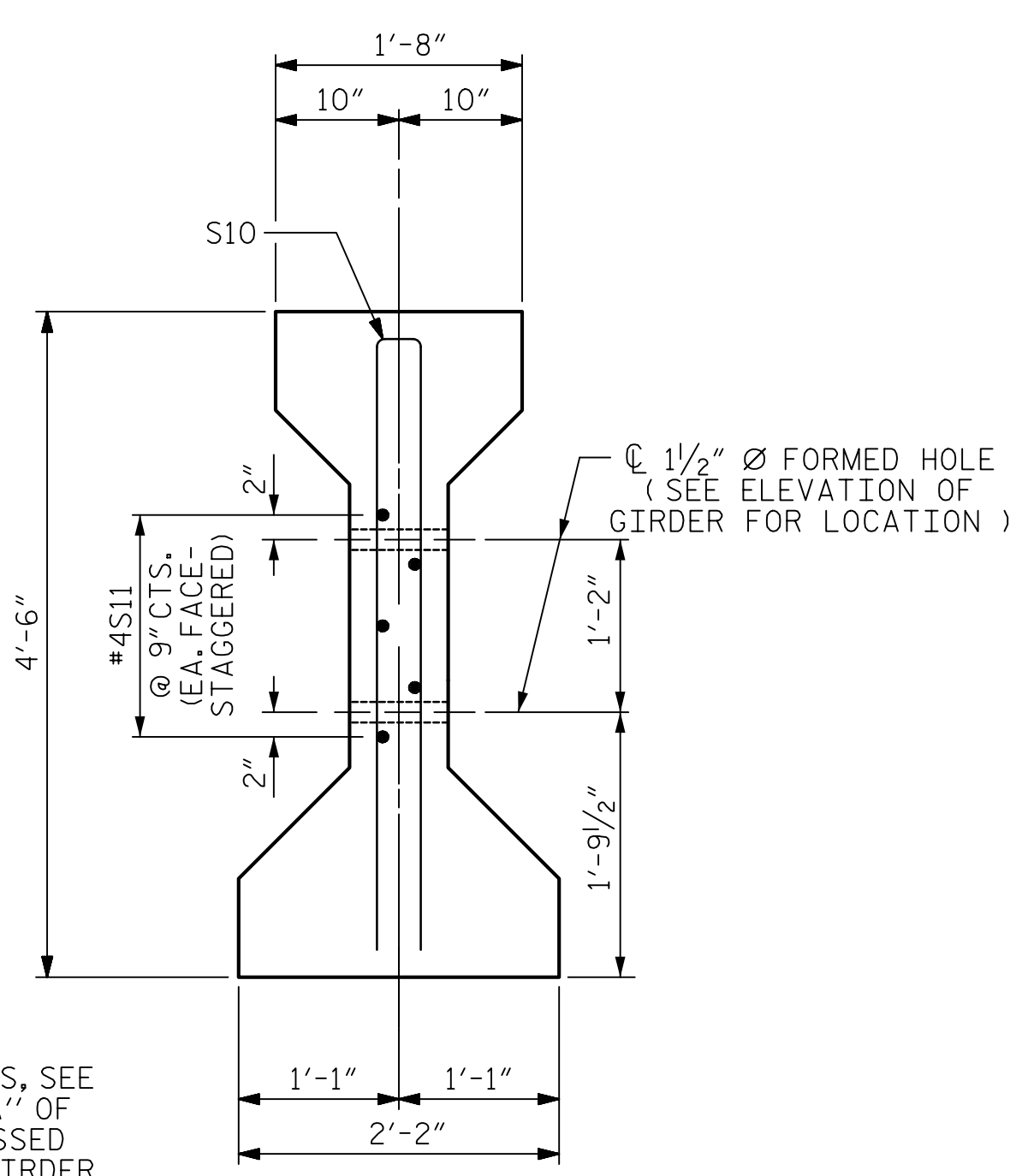
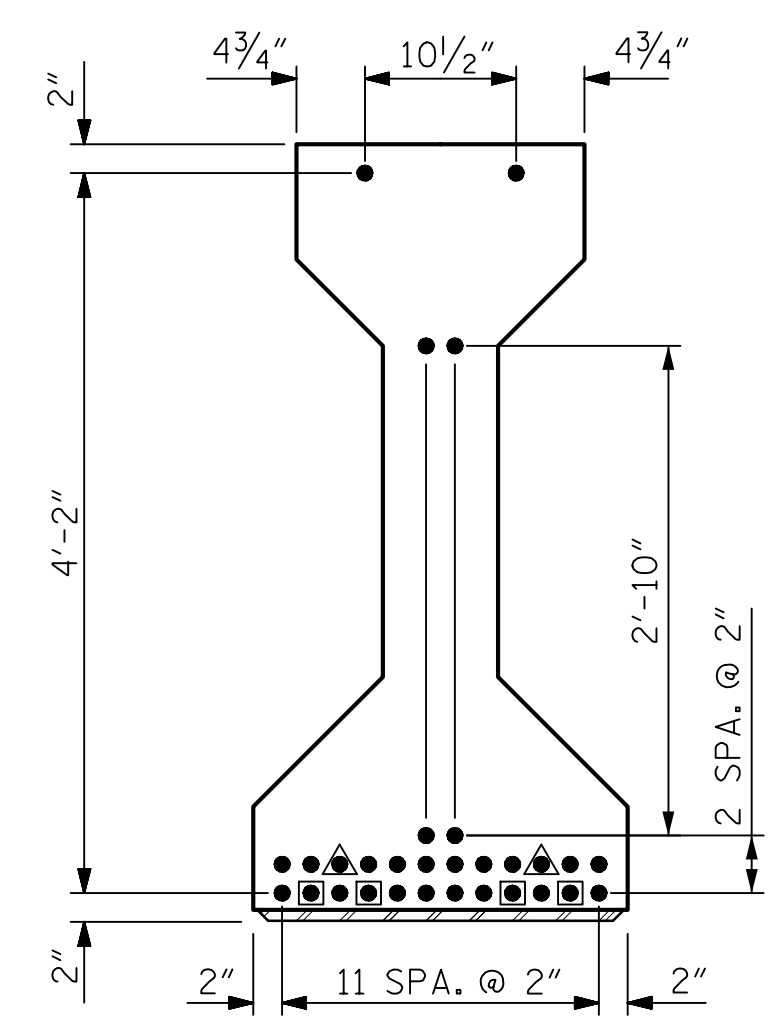


SECTION B-B

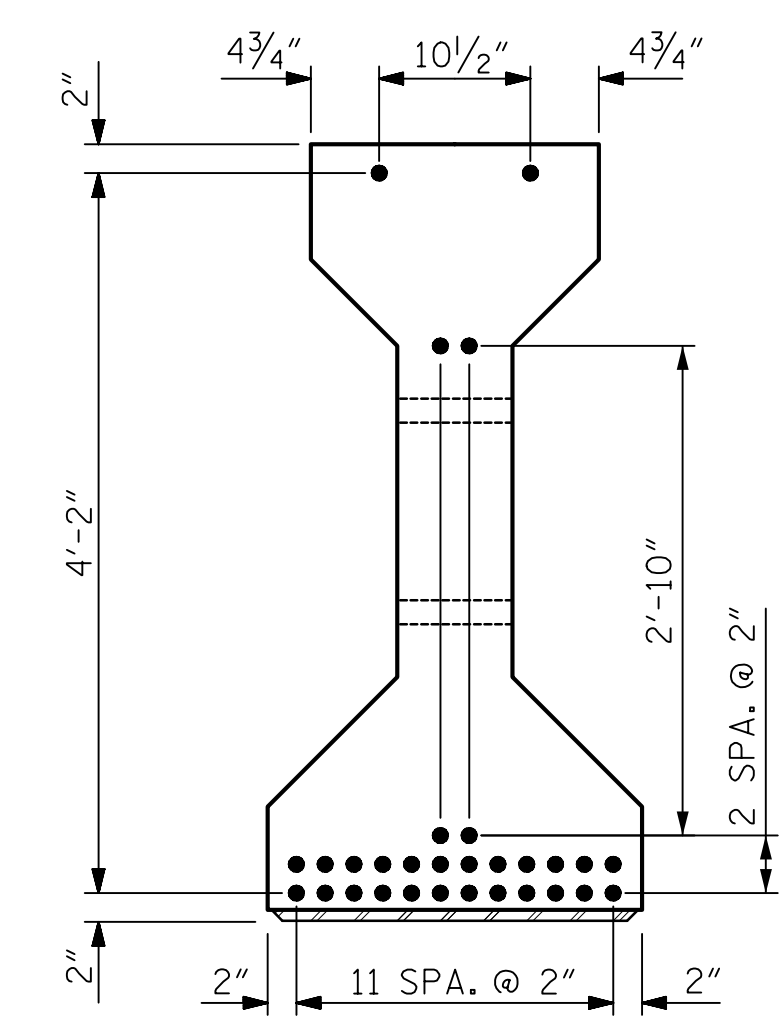


SECTION C-C  
(S1 BARS NOT SHOWN)

\* FOR S7 BARS, SEE  
DETAIL "A" OF  
PRESTRESSED  
CONCRETE GIRDER  
CONTINUOUS FOR LIVE  
LOAD DETAILS SHEET



AT END OF GIRDER

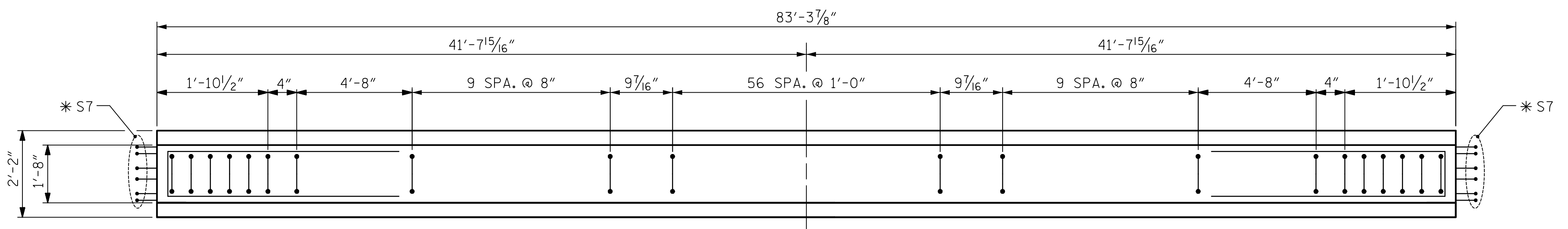


AT C OF GIRDER

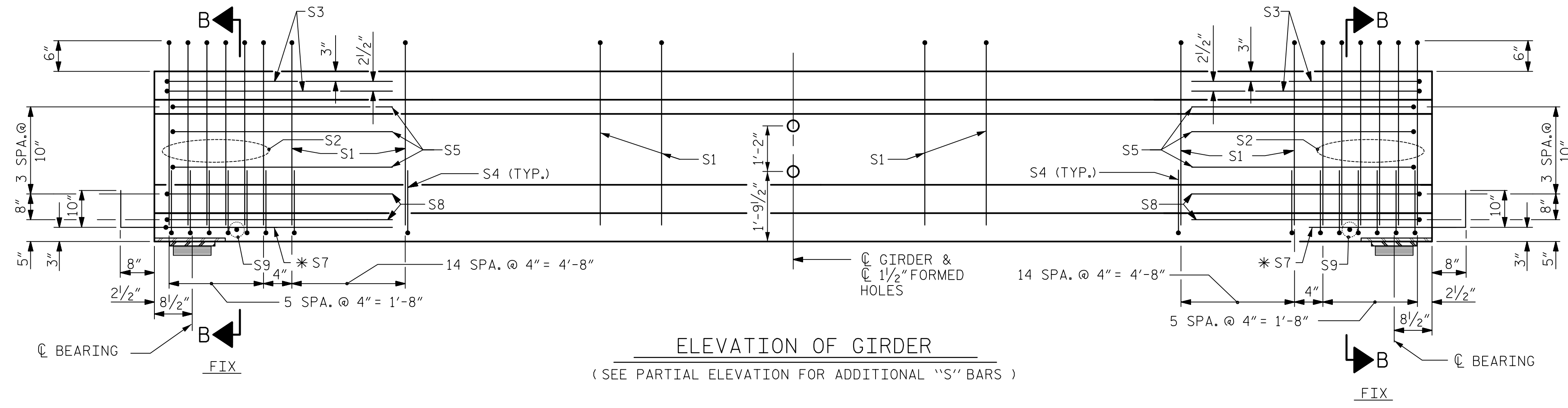
0.6" Ø LOW RELAXATION STRAND LAYOUT

(30 TOTAL STRANDS REQUIRED)

- FULLY BONDED STRANDS
- STRANDS DEBONDED FOR 10'-0" FROM END OF GIRDER
- ▲ STRANDS DEBONDED FOR 4'-0" FROM END OF GIRDER

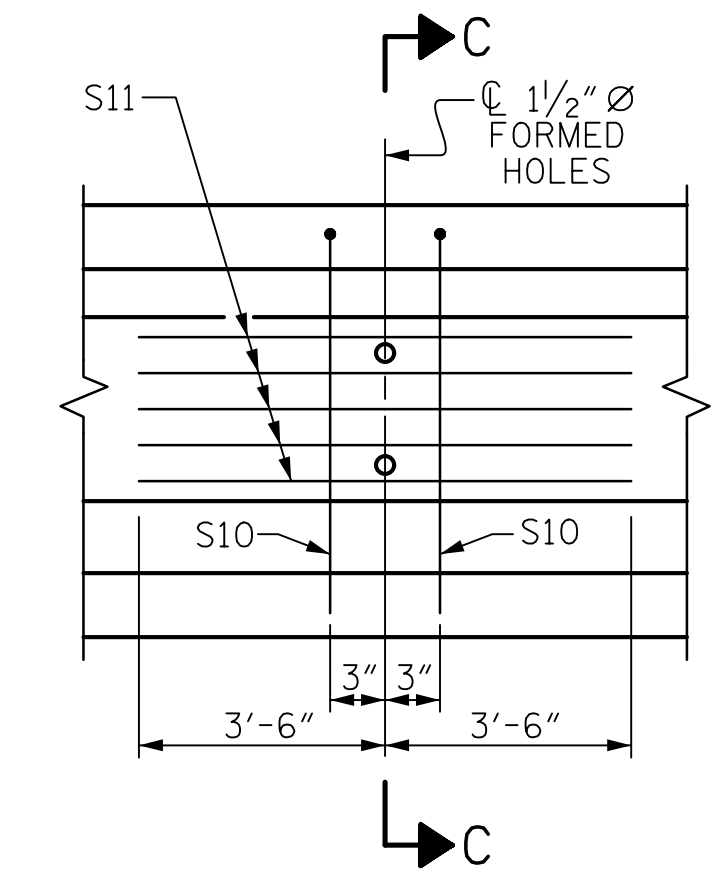


PLAN OF GIRDER



ELEVATION OF GIRDER

(SEE PARTIAL ELEVATION FOR ADDITIONAL "S" BARS)



PARTIAL ELEVATION

SHOWING INTERMEDIATE DIAPHRAGM  
REINFORCING STEEL FOR ALL GIRDERS

0.6" Ø L. R. GRADE 270 STRANDS

AREA (SQUARE INCHES)	ULTIMATE STRENGTH (LBS. PER STRAND)	APPLIED PRESTRESS (LBS. PER STRAND)
0.217	58,600	43,950

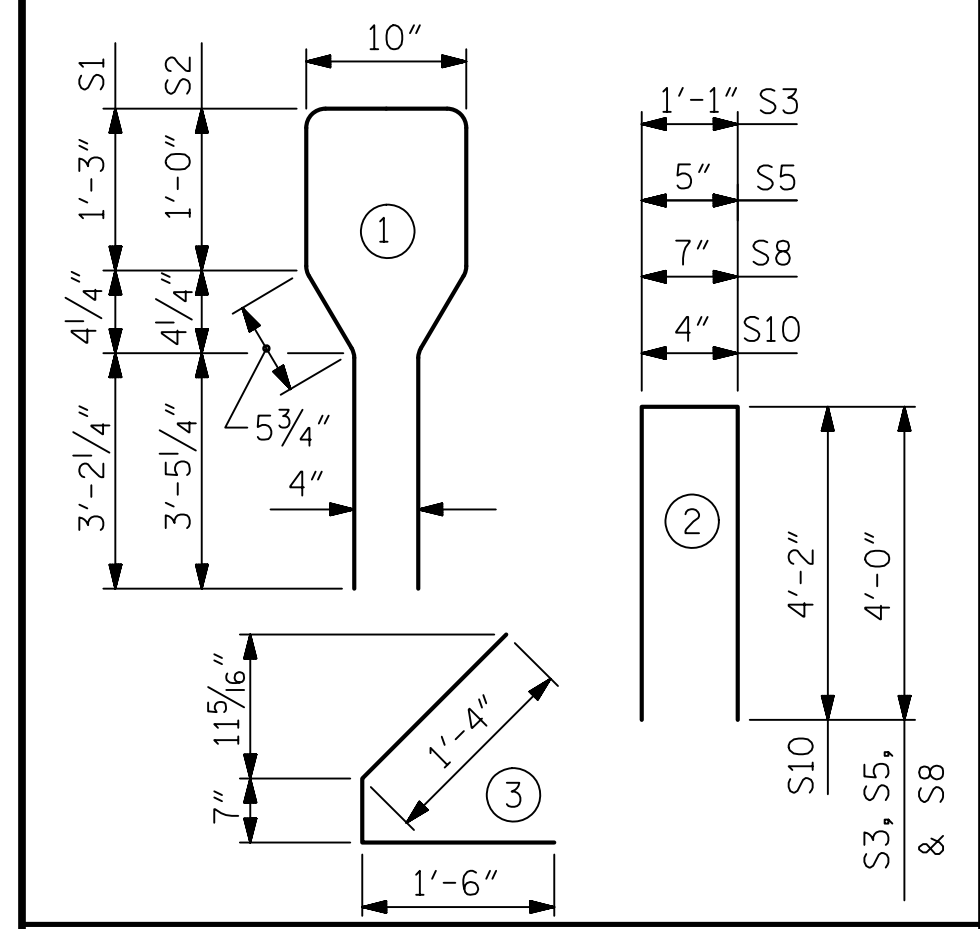
REINFORCING STEEL FOR ONE GIRDER

BAR	NUMBER	SIZE	TYPE	LENGTH	WEIGHT
S1	105	#4	1	10'-8"	748
S2	12	#6	1	10'-8"	192
S3	4	#4	2	9'-1"	24
S4	84	#4	3	3'-5"	192
S5	6	#4	2	8'-5"	34
* S7	12	#5	STR	3'-8"	46
S8	4	#4	2	8'-7"	23
S9	2	#3	STR	1'-10"	1
S10	2	#5	2	8'-8"	18
S11	5	#4	STR	7'-0"	23

\* NOTE: S7 BARS SHALL BE BENT BEFORE SHIPMENT. HEAT BENDING SHALL NOT BE ALLOWED.

BAR TYPES

ALL BAR DIMENSIONS ARE OUT-TO-OUT



QUANTITIES FOR ONE GIRDER

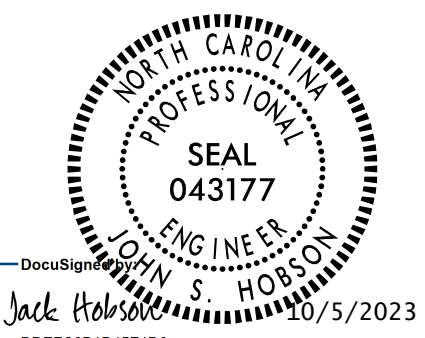
GIRDER QUANTITY	REINFORCING STEEL	6000 PSI CONCRETE	0.6" Ø L. R. STRANDS
	LB.	C.Y.	No.
7	1,301	16.9	30

GIRDERS REQUIRED

NUMBER	LENGTH	TOTAL LENGTH
7	83'-3 7/8"	583'-3 7/8"



111 E. Hargett Street  
Suite 300  
Raleigh, NC 27601  
919-714-8670  
meadhunt.com  
NC License No. F-1235



DOCUMENT NOT CONSIDERED  
FINAL UNLESS ALL  
SIGNATURES COMPLETED

PROJECT NO. U-5808

UNION COUNTY

STATION: 55+00.96 -L2-

SHEET 2 OF 5

STATE OF NORTH CAROLINA  
DEPARTMENT OF TRANSPORTATION  
RALEIGH  
STANDARD  
AASHTO TYPE IV  
PRESTRESSED CONCRETE GIRDER  
CONTINUOUS FOR LIVE LOAD  
SPAN "B"

REVISIONS						SHEET NO. S-17
NO.	BY:	DATE:	NO.	BY:	DATE:	
1			3			TOTAL SHEETS
2			4			56

ASSEMBLED BY :	J.S. HOBSON	DATE :	05/17/23
CHECKED BY :	C.C. CAMPBELL	DATE :	06/19/23
DESIGN E.O.R. :	J.S. HOBSON	DATE :	08/30/23
DRAWN BY :	ELR 8/91	REV. 10/1/11	MAA/GM
CHECKED BY :	GRP 8/91	REV. 1/15	MAA/TMG
		REV. 12/17	MAA/THC