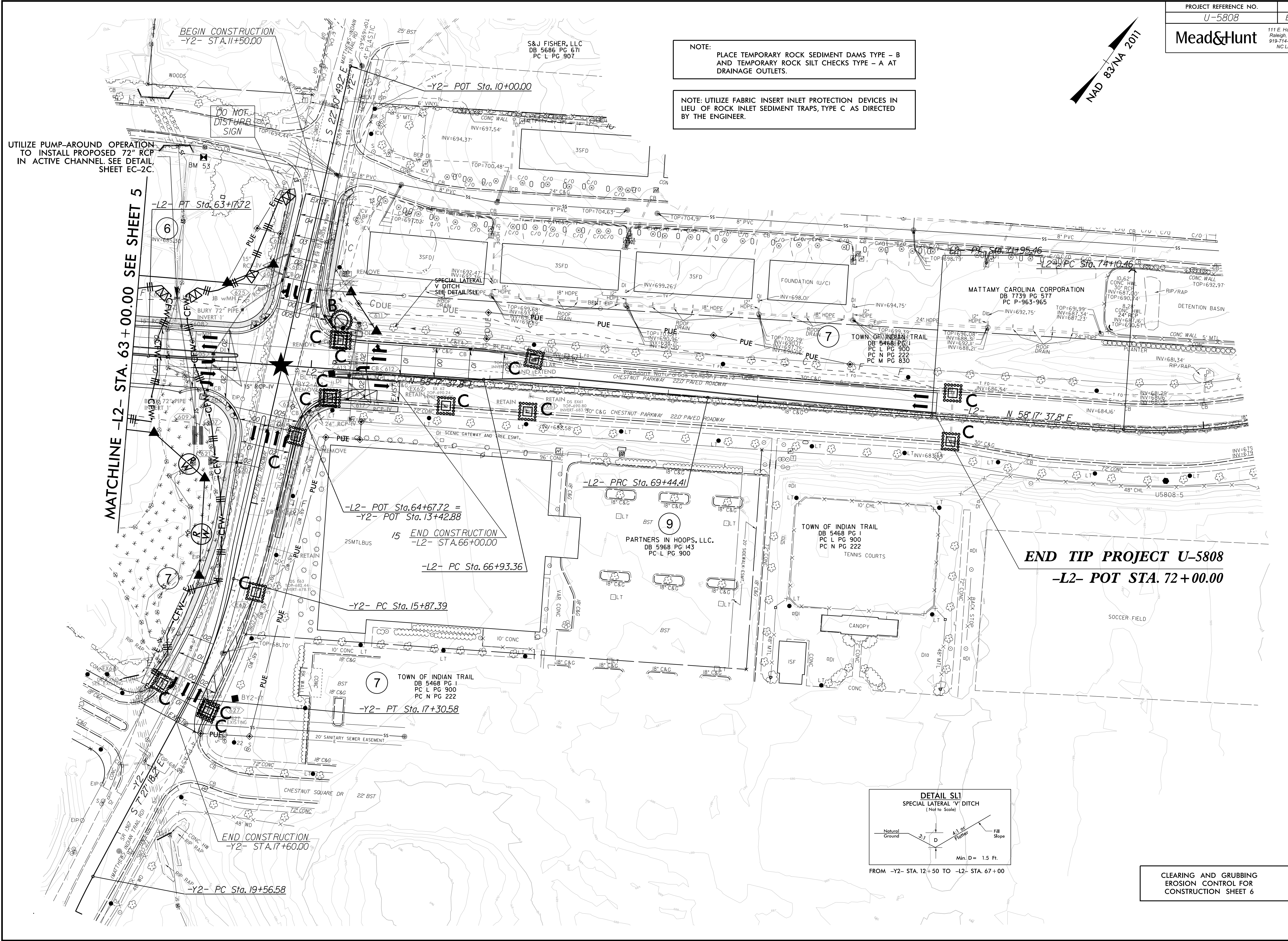


NOTE:
PLACE TEMPORARY ROCK SEDIMENT DAMS TYPE - B
AND TEMPORARY ROCK SILT CHECKS TYPE - A AT
DRAINAGE OUTLETS.

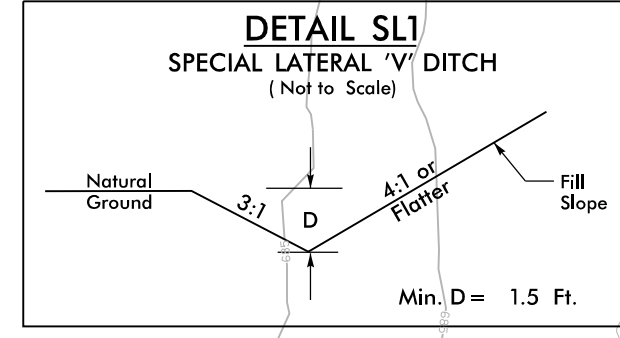
NOTE: UTILIZE FABRIC INSERT INLET PROTECTION DEVICES IN
LIEU OF ROCK INLET SEDIMENT TRAPS, TYPE C AS DIRECTED
BY THE ENGINEER.

UTILIZE PUMP-AROUND OPERATION
TO INSTALL PROPOSED 72" RCP
IN ACTIVE CHANNEL. SEE DETAIL,
SHEET EC-2C.



MATCHLINE -L2- STA. 63+00.00 SEE SHEET 5

END TIP PROJECT U-5808
-L2- POT STA. 72+00.00



FROM -Y2- STA. 12+50 TO -L2- STA. 67+00

CLEARING AND GRUBBING
EROSION CONTROL FOR
CONSTRUCTION SHEET 6