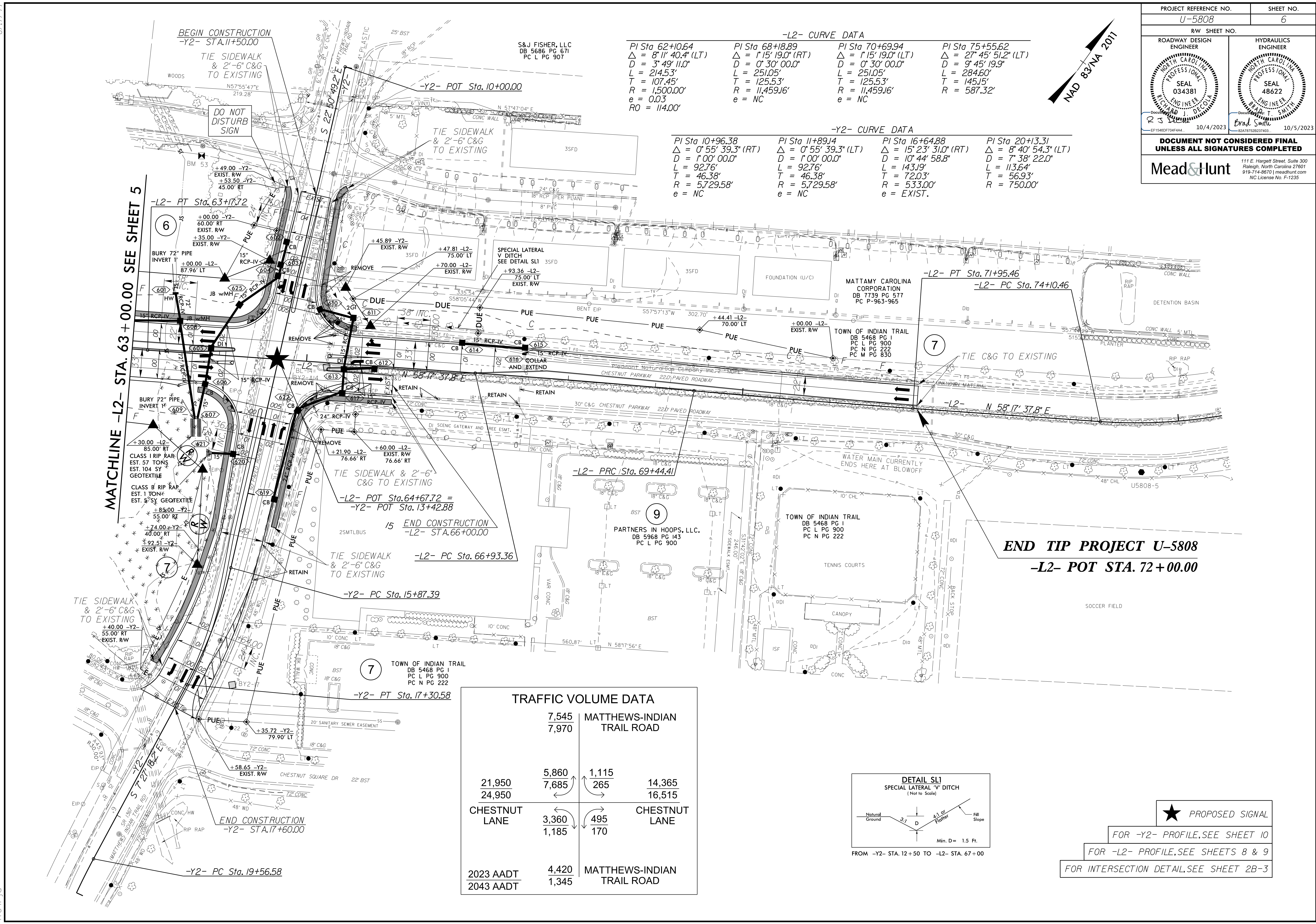


PROJECT REFERENCE NO. U-5808		SHEET NO. 6	
RW SHEET NO.			
ROADWAY DESIGN ENGINEER BRAD SMITH SEAL 034381 10/4/2023		HYDRAULICS ENGINEER BRAD SMITH SEAL 48622 10/5/2023	
DOCUMENT NOT CONSIDERED FINAL UNLESS ALL SIGNATURES COMPLETED			
Mead & Hunt 111 E. Hargett Street, Suite 300 Raleigh, North Carolina 27601 919-714-8570 meadandhunt.com NC License No. F-1235			



-L2- CURVE DATA

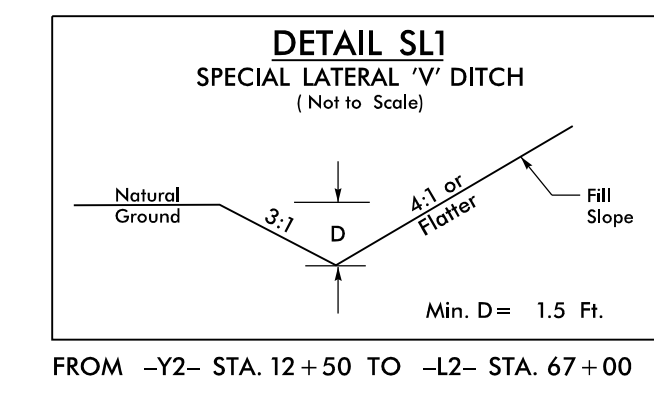
PI Sta 62+10.64 Δ = 8' 11' 40.4" (LT) D = 3' 49' 11.0" L = 214.53' T = 107.45' R = 1,500.00' e = 0.03 RO = 114.00'	PI Sta 68+18.89 Δ = 1' 15' 19.0" (RT) D = 0' 30' 00.0" L = 251.05' T = 125.53' R = 11,459.16' e = NC	PI Sta 70+69.94 Δ = 1' 15' 19.0" (LT) D = 0' 30' 00.0" L = 251.05' T = 125.53' R = 11,459.16' e = NC	PI Sta 75+55.62 Δ = 27' 45' 51.2" (LT) D = 9' 45' 19.9" L = 284.60' T = 145.15' R = 587.32'
---	--	--	--

-Y2- CURVE DATA

PI Sta 10+96.38 Δ = 0' 55' 39.3" (RT) D = 1' 00' 00.0" L = 92.76' T = 46.38' R = 5,729.58' e = NC	PI Sta 11+89.14 Δ = 0' 55' 39.3" (LT) D = 1' 00' 00.0" L = 92.76' T = 46.38' R = 5,729.58' e = NC	PI Sta 16+64.88 Δ = 15' 23' 31.0" (RT) D = 10' 44' 58.8" L = 143.19' T = 72.03' R = 533.00' e = EXIST.	PI Sta 20+13.31 Δ = 8' 40' 54.3" (LT) D = 7' 38' 22.0" L = 113.64' T = 56.93' R = 750.00'
---	---	--	--

TRAFFIC VOLUME DATA

	7,545	MATTHEWS-INDIAN TRAIL ROAD	
	7,970		
	21,950	5,860	1,115
	24,950	7,685	265
			14,365
			16,515
CHESTNUT LANE	3,360	495	CHESTNUT LANE
	1,185	170	
2023 AADT	4,420	MATTHEWS-INDIAN TRAIL ROAD	
2043 AADT	1,345		



★ PROPOSED SIGNAL

FOR -Y2- PROFILE, SEE SHEET 10

FOR -L2- PROFILE, SEE SHEETS 8 & 9

FOR INTERSECTION DETAIL, SEE SHEET 2B-3

04-OCT-2023 16:30
 R:\Roadway\Proj\U5808_Rdy_psh_06.dgn
 178411d