

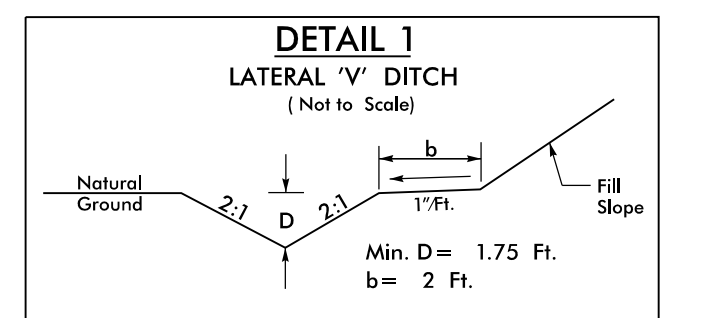
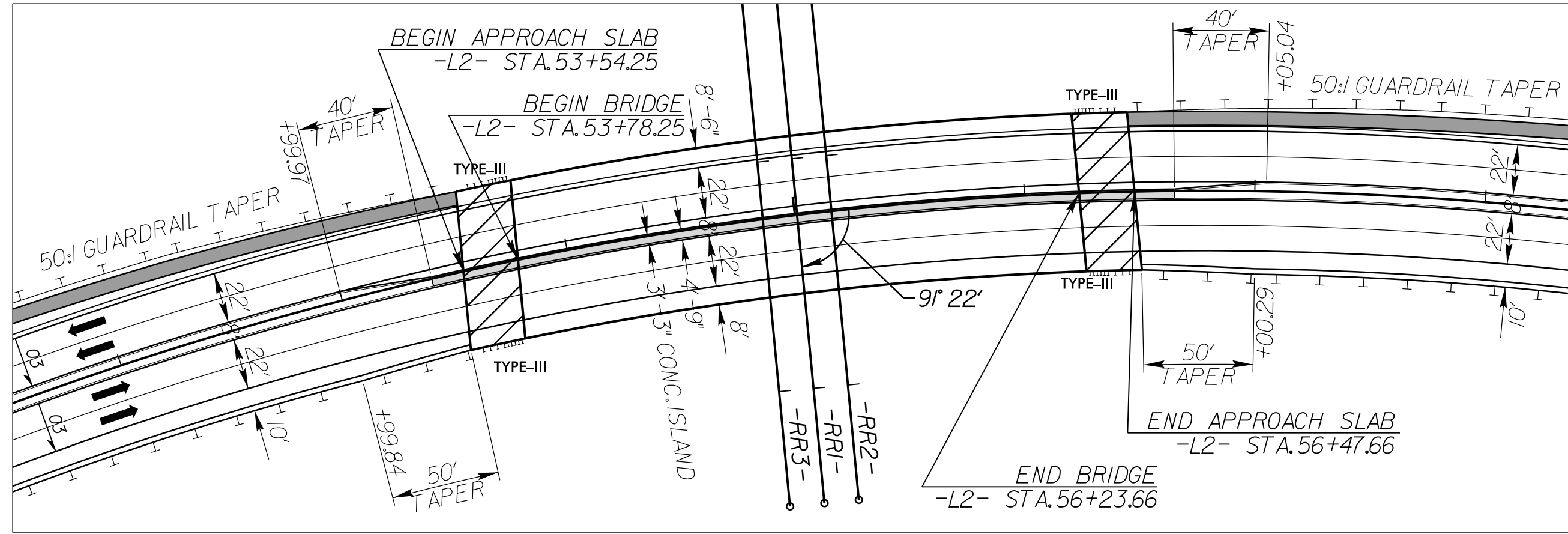
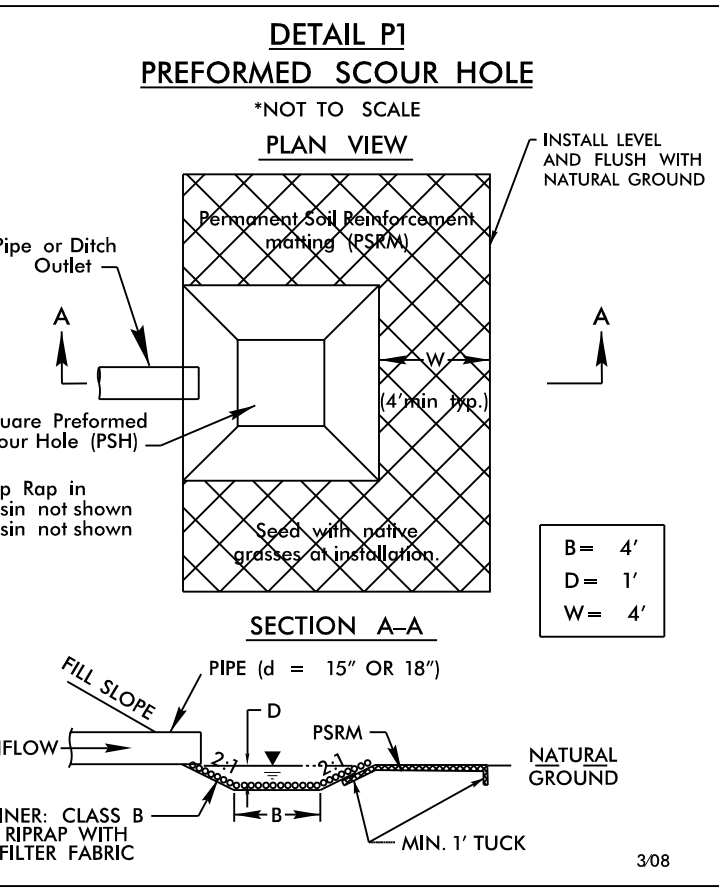
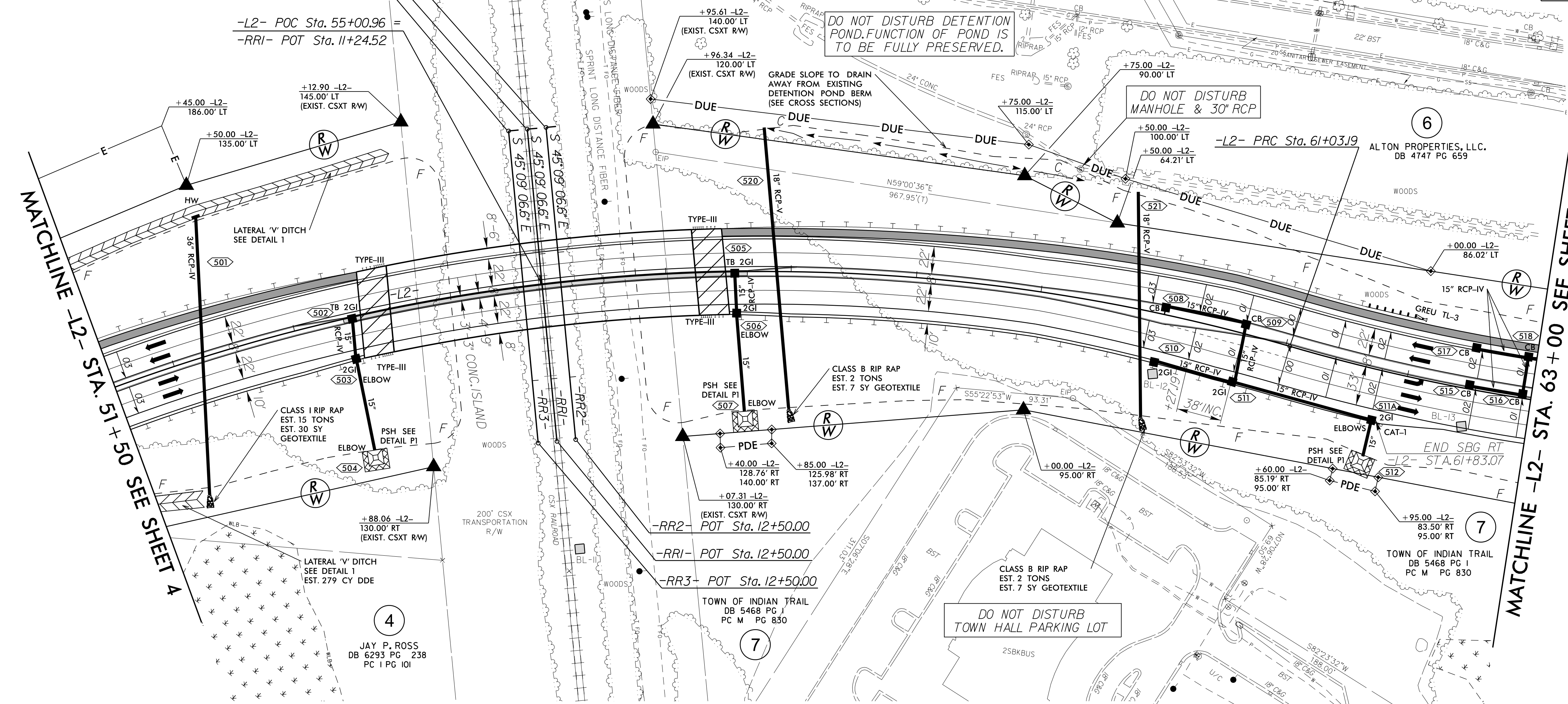
PROJECT REFERENCE NO. U-5808	SHEET NO. 5
RW SHEET NO.	
ROADWAY DESIGN ENGINEER BRAD SMITH NORTH CAROLINA PROFESSIONAL SEAL 034381 10/4/2023	HYDRAULICS ENGINEER BRAD SMITH NORTH CAROLINA PROFESSIONAL SEAL 48622 10/5/2023
DOCUMENT NOT CONSIDERED FINAL UNLESS ALL SIGNATURES COMPLETED	
Mead & Hunt 111 E. Hargett Street, Suite 300 Raleigh, North Carolina 27601 919-714-8570 meadandhunt.com NC License No. F-1235	

-L2- CURVE DATA

PI Sta 55+77.17 Δ = 42° 12' 08.0" (RT) D = 3° 49' 11.0" L = 1404.85' T = 578.84' R = 1,500.00' e = 0.03 RO = 114.00'	PI Sta 62+10.64 Δ = 8° 11' 40.4" (LT) D = 3° 49' 11.0" L = 214.53' T = 107.45' R = 1,500.00' e = 0.03 RO = 114.00'
---	---

3
KILLOUGH FAMILY FARM 21, LLC.
DB 5867 PG 694
PC 1 PG 101

-RR2- POT Sta. 10+00.00
-RR1- POT Sta. 10+00.00
-RR3- POT Sta. 10+00.00
-L2- POC Sta. 55+00.96
-RR1- POT Sta. 11+24.52



FROM -Y1A- STA. 11+75 LT TO -L2- STA. 54+00 LT
FROM -Y1B- STA. 12+00 LT TO -L2- STA. 51+90 RT

FOR -L2- PROFILE, SEE SHEET 8

BRIDGE APPROACH SLAB

FOR INTERSECTION DETAIL, SEE SHEET 2B-2

FOR STRUCTURE PLANS, SEE SHEET S-1 THRU S-56

-L2- STA 52+40 (RT)
-L2- STA 56+62 (RT)
-L2- STA 60+66 (RT)

04-OCT-2023 16:30
R:\Roadway\Proj\U5808_Rdy_psh_05.dgn
1784410

8.17/99