

NOTES

ALL PRESTRESSING STRANDS SHALL BE 7-WIRE LOW-RELAXATION GRADE 270 STRANDS AND SHALL CONFORM TO AASHTO M203 EXCEPT FOR SAMPLING REQUIREMENTS WHICH SHALL BE IN ACCORDANCE WITH THE STANDARD SPECIFICATIONS.

ALL REINFORCING STEEL SHALL BE GRADE 60.

APPLY EPOXY PROTECTIVE COATING TO END OF GIRDER SURFACES INDICATED IN ELEVATION VIEW.

EMBEDDED PLATE "B-1" SHALL BE GALVANIZED IN ACCORDANCE WITH THE STANDARD SPECIFICATIONS.

ANCHOR STUDS SHALL CONFORM TO AASHTO M169 GRADES 1010 THROUGH 1020 OR APPROVED EQUAL, AND SHALL MEET THE TYPE "B" REQUIREMENTS OF SUBSECTION 7.3 OF THE ANSI/AASHTO/AWS D1.5 BRIDGE WELDING CODE.

AT ENDS OF GIRDERS TO BE EMBEDDED IN CONCRETE DIAPHRAGMS OR END WALLS, PRESTRESSING STRANDS MAY EXTEND A MAXIMUM OF 2" BEYOND THE GIRDER ENDS. OTHERWISE, PRESTRESSING STRANDS SHALL BE CUT FLUSH WITH THE GIRDER ENDS.

THE TRANSFER OF LOAD FROM THE ANCHORAGES TO THE GIRDER SHALL BE DONE WHEN CONCRETE HAS REACHED A COMPRESSIVE STRENGTH OF NOT LESS THAN 4,600 PSI FOR SPANS A & C AND NOT LESS THAN 6,400 PSI FOR SPAN B.

DEPENDING ON THE TYPE OF SYSTEM USED TO SUPPORT THE DECK SLAB FORMS, PRESET ANCHORS MAY BE NECESSARY IN THE PRESTRESSED CONCRETE GIRDER.

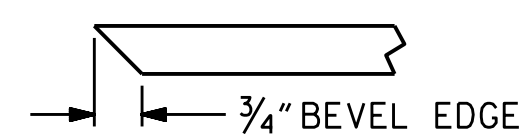
THE TOP SURFACE OF THE GIRDER, EXCLUDING THE OUTSIDE 4" AND THE LINK SLAB REGION, SHALL BE RAKED TO A DEPTH OF ¼".

DEAD LOAD DEFLECTION TABLE FOR GIRDERS																					
0.6" Ø LOW RELAXATION	SPANS A & C																				
	EXTERIOR GIRDERS 1 & 5																				
	TWENTIETH POINTS	0	0.05	0.10	0.15	0.20	0.25	0.30	0.35	0.40	0.45	0.50	0.55	0.60	0.65	0.70	0.75	0.80	0.85	0.90	0.95
CAMBER (GIRDER ALONE IN PLACE)	0	0.012	0.024	0.034	0.044	0.053	0.061	0.067	0.071	0.074	0.075	0.074	0.071	0.067	0.061	0.053	0.044	0.034	0.024	0.012	0
* DEFLECTION DUE TO SUPERIMPOSED D. L.	0	0.007	0.014	0.020	0.026	0.031	0.035	0.039	0.042	0.043	0.044	0.043	0.042	0.039	0.035	0.031	0.026	0.0220	0.014	0.007	0
FINAL CAMBER	0	1/16"	1/8"	3/16"	1/4"	1/4"	5/16"	5/16"	3/8"	3/8"	3/8"	3/8"	3/8"	5/16"	5/16"	1/4"	1/4"	3/16"	1/8"	1/16"	0
0.6" Ø LOW RELAXATION	SPANS A & C																				
	INTERIOR GIRDERS 2, 3, & 4																				
	TWENTIETH POINTS	0	0.05	0.10	0.15	0.20	0.25	0.30	0.35	0.40	0.45	0.50	0.55	0.60	0.65	0.70	0.75	0.80	0.85	0.90	0.95
CAMBER (GIRDER ALONE IN PLACE)	0	0.012	0.024	0.034	0.044	0.053	0.061	0.067	0.071	0.074	0.075	0.074	0.071	0.067	0.061	0.053	0.044	0.034	0.024	0.012	0
* DEFLECTION DUE TO SUPERIMPOSED D. L.	0	0.008	0.016	0.023	0.030	0.036	0.041	0.045	0.048	0.049	0.050	0.049	0.048	0.045	0.041	0.036	0.030	0.023	0.016	0.008	0
FINAL CAMBER	0	1/16"	1/8"	1/8"	3/16"	3/16"	1/4"	1/4"	5/16"	5/16"	5/16"	5/16"	5/16"	1/4"	1/4"	3/16"	3/16"	1/8"	1/8"	1/16"	0

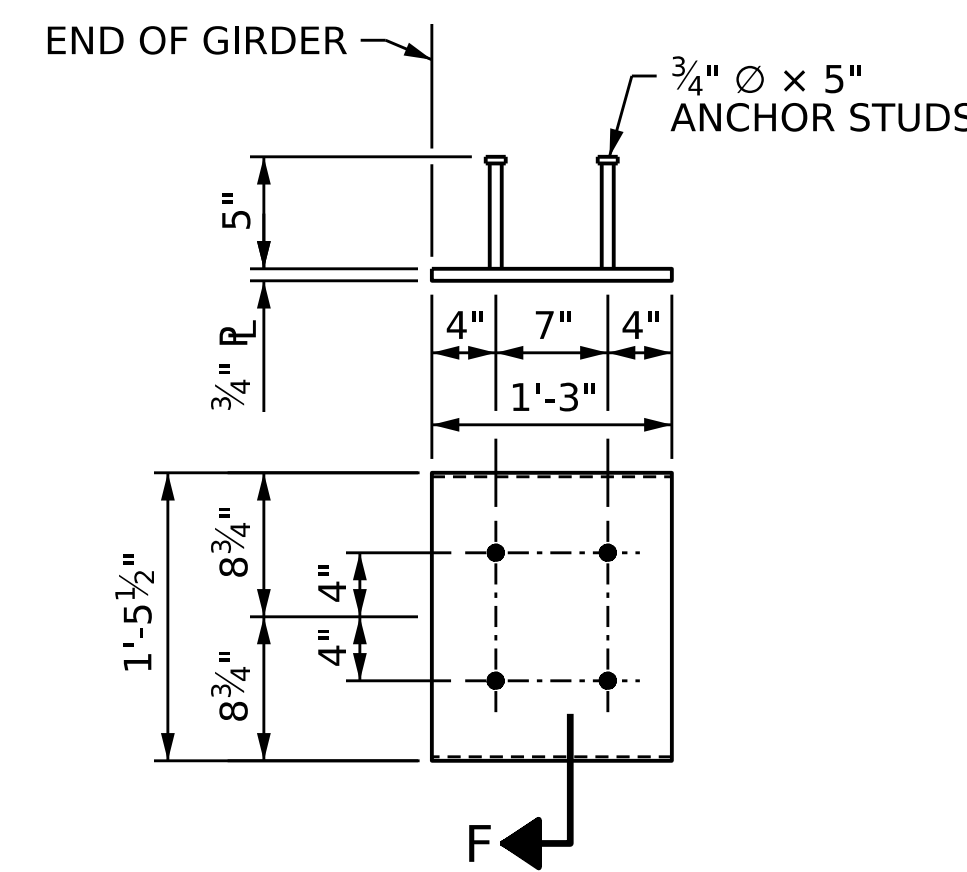
* INCLUDES FUTURE WEARING SURFACE
ALL VALUES ARE SHOWN IN FEET (DECIMAL FORM), EXCEPT "FINAL CAMBER", WHICH IS GIVEN IN INCHES (FRACTION FORM)

DEAD LOAD DEFLECTION TABLE FOR GIRDERS																					
0.6" Ø LOW RELAXATION	SPAN B																				
	EXTERIOR GIRDERS 1 & 5																				
	TWENTIETH POINTS	0	0.05	0.10	0.15	0.20	0.25	0.30	0.35	0.40	0.45	0.50	0.55	0.60	0.65	0.70	0.75	0.80	0.85	0.90	0.95
CAMBER (GIRDER ALONE IN PLACE)	0	0.018	0.036	0.052	0.068	0.081	0.093	0.102	0.108	0.113	0.114	0.113	0.108	0.102	0.093	0.081	0.068	0.052	0.036	0.018	0
* DEFLECTION DUE TO SUPERIMPOSED D. L.	0	0.014	0.028	0.041	0.053	0.064	0.073	0.080	0.086	0.089	0.090	0.089	0.086	0.080	0.073	0.064	0.053	0.041	0.028	0.014	0
FINAL CAMBER	0	1/16"	1/16"	1/8"	3/16"	3/16"	1/4"	1/4"	5/16"	5/16"	5/16"	5/16"	5/16"	1/4"	1/4"	3/16"	3/16"	1/8"	1/16"	1/16"	0
0.6" Ø LOW RELAXATION	SPAN B																				
	INTERIOR GIRDERS 2, 3, & 4																				
	TWENTIETH POINTS	0	0.05	0.10	0.15	0.20	0.25	0.30	0.35	0.40	0.45	0.50	0.55	0.60	0.65	0.70	0.75	0.80	0.85	0.90	0.95
CAMBER (GIRDER ALONE IN PLACE)	0	0.018	0.036	0.052	0.068	0.081	0.093	0.102	0.108	0.113	0.114	0.113	0.108	0.102	0.093	0.081	0.068	0.052	0.036	0.018	0
* DEFLECTION DUE TO SUPERIMPOSED D. L.	0	0.016	0.032	0.047	0.061	0.073	0.084	0.092	0.098	0.102	0.103	0.102	0.098	0.092	0.084	0.073	0.061	0.047	0.032	0.016	0
FINAL CAMBER	0	1/16"	1/8"	1/8"	3/16"	3/16"	1/4"	1/4"	5/16"	5/16"	5/16"	5/16"	5/16"	1/4"	1/4"	3/16"	3/16"	1/8"	1/8"	1/16"	0

* INCLUDES FUTURE WEARING SURFACE
ALL VALUES ARE SHOWN IN FEET (DECIMAL FORM), EXCEPT "FINAL CAMBER", WHICH IS GIVEN IN INCHES (FRACTION FORM)



SECTION "F"
(SEE NOTES)



EMBEDDED PLATE "B-1" DETAILS FOR AASHTO TYPE II GIRDER

(2 REQ'D. PER GIRDER)

PROJECT NO. **BR-0046**
SAMPSON COUNTY
STATION: **24+30.00 -L-**

SHEET 3 OF 3

STATE OF NORTH CAROLINA
DEPARTMENT OF TRANSPORTATION
RALEIGH
STANDARD

PRESTRESSED CONCRETE GIRDER CONTINUOUS FOR LIVE LOAD DETAILS



Designed by:
P. Corey Newton
10/09/2023

DOCUMENT NOT CONSIDERED FINAL UNLESS ALL SIGNATURES COMPLETED

REVISIONS						SHEET NO.
NO.	BY:	DATE:	NO.	BY:	DATE:	S-14
1			3			TOTAL SHEETS 31
2			4			

DESIGN ENGINEER OF RECORD :		
P. D. BRYANT		DATE : 8/28/23
ASSEMBLED BY :	P. K. NEWTON	DATE : 2/7/23
CHECKED BY :	P. D. BRYANT	DATE : 8/28/23
DRAWN BY :	ELR 11/91	REV. 1/15 MAA / TMG
CHECKED BY :	GRP 11/91	REV. 2/15 MAA / TMG
		REV. 12/17 MAA / THC