

8/17/99

Place Matting for Erosion Control
on Slope as Work Allows.
-Det- Sta. 20+00 to Sta. 20+20 LT
-Det- Sta. 20+50 to Sta. 25+00 LT
-DR_Det- Sta. 10+65 to Sta. 11+00 LT and RT

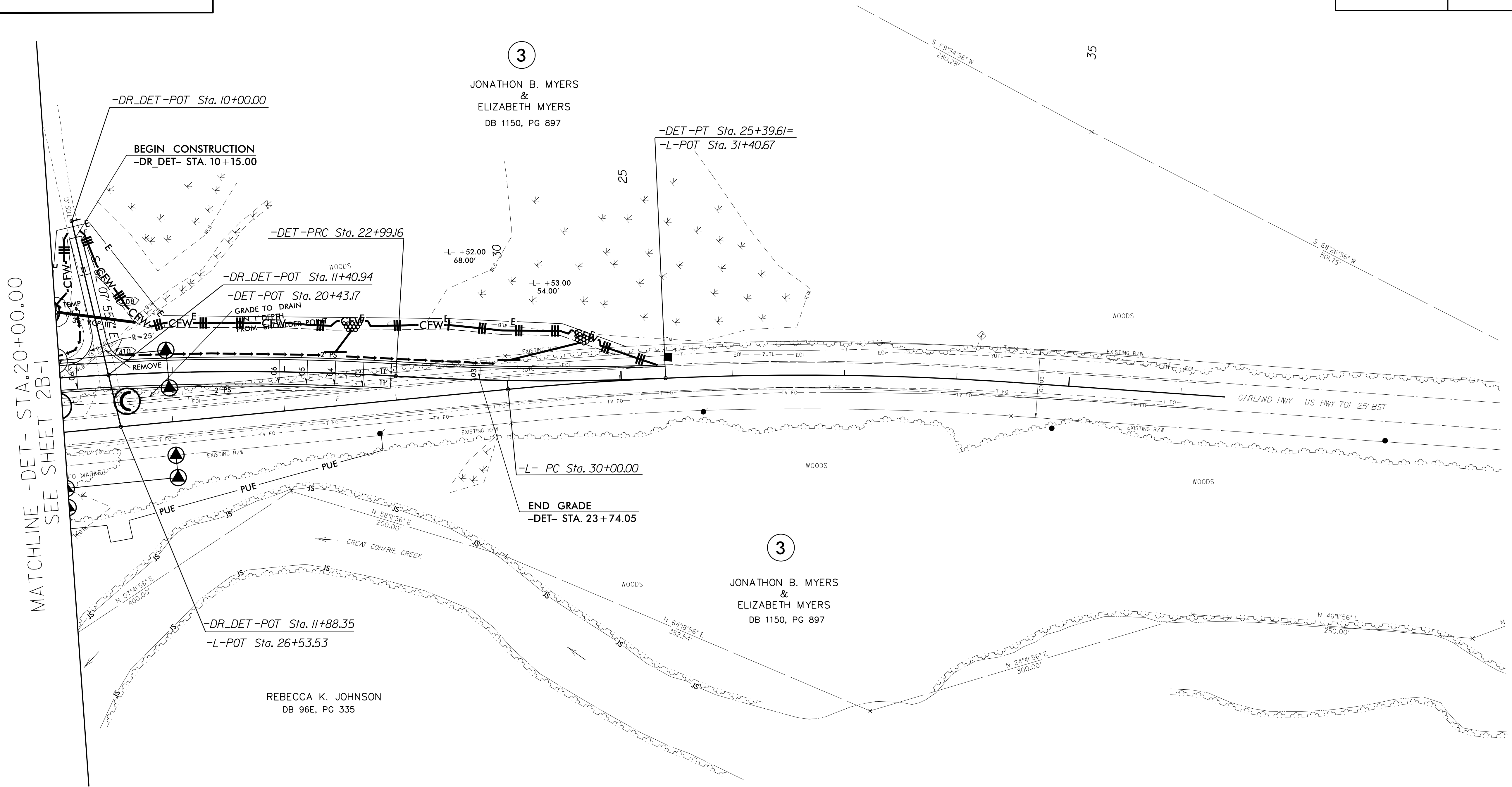
Place Matting for Erosion Control
on Slopes Adjacent to Permitted
Wetlands as Work Allows.

DETOUR



PROJECT REFERENCE NO. <i>BR-0046</i>	SHEET NO. <i>EC-8/CONST.2B-2</i>
RW SHEET NO.	
ROADWAY DESIGN ENGINEER	HYDRAULICS ENGINEER

NOTE: UTILIZE COIR FIBER MATTING ADJACENT TO WETLANDS/ JURISDICTIONAL AREAS AND AS DIRECTED



MATCHLINE -DET- STA.20+00.00
SEE SHEET 2B-1

NOTE: UTILIZE TEMPORARY SEDIMENT BASIN OR SPECIAL STILLING BASIN(S) AS STILLING BASIN WHERE APPLICABLE.

14-FEB-2023 11:22
R:\FEB2023\1\Design\BR0046.EC.PSH2B-2.dgn
R:\FEB2023\1\Design\BR0046.EC.PSH2B-2.dgn