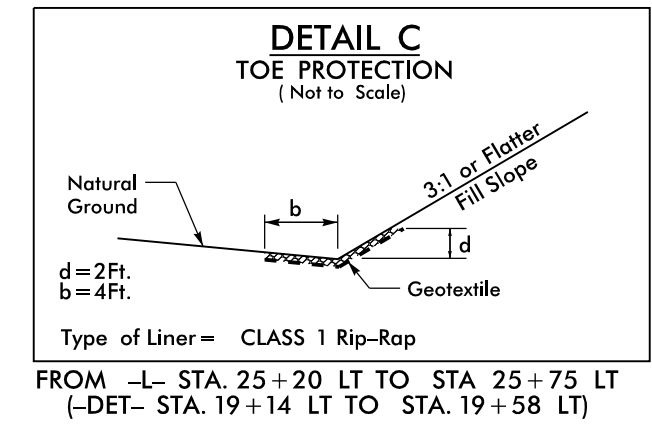
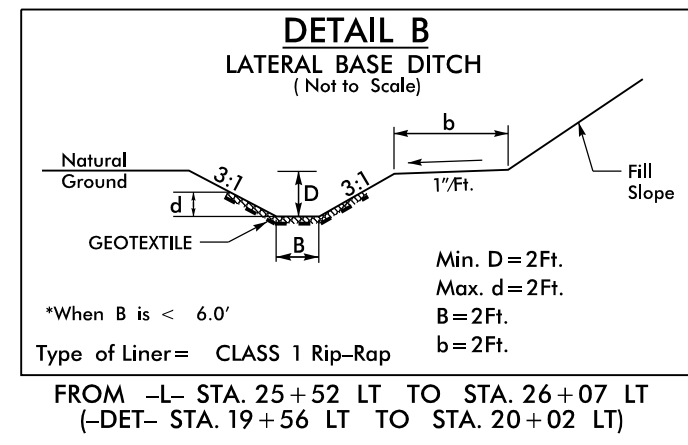


PROJECT REFERENCE NO. BR-0046	SHEET NO. 2B-1
RW SHEET NO.	
ROADWAY DESIGN ENGINEER JONATHAN B. MYERS SEAL 027771	HYDRAULICS ENGINEER WILLIAM G. GAIL SEAL 022000
DOCUMENT NOT CONSIDERED FINAL UNLESS ALL SIGNATURES COMPLETED	

DETOUR

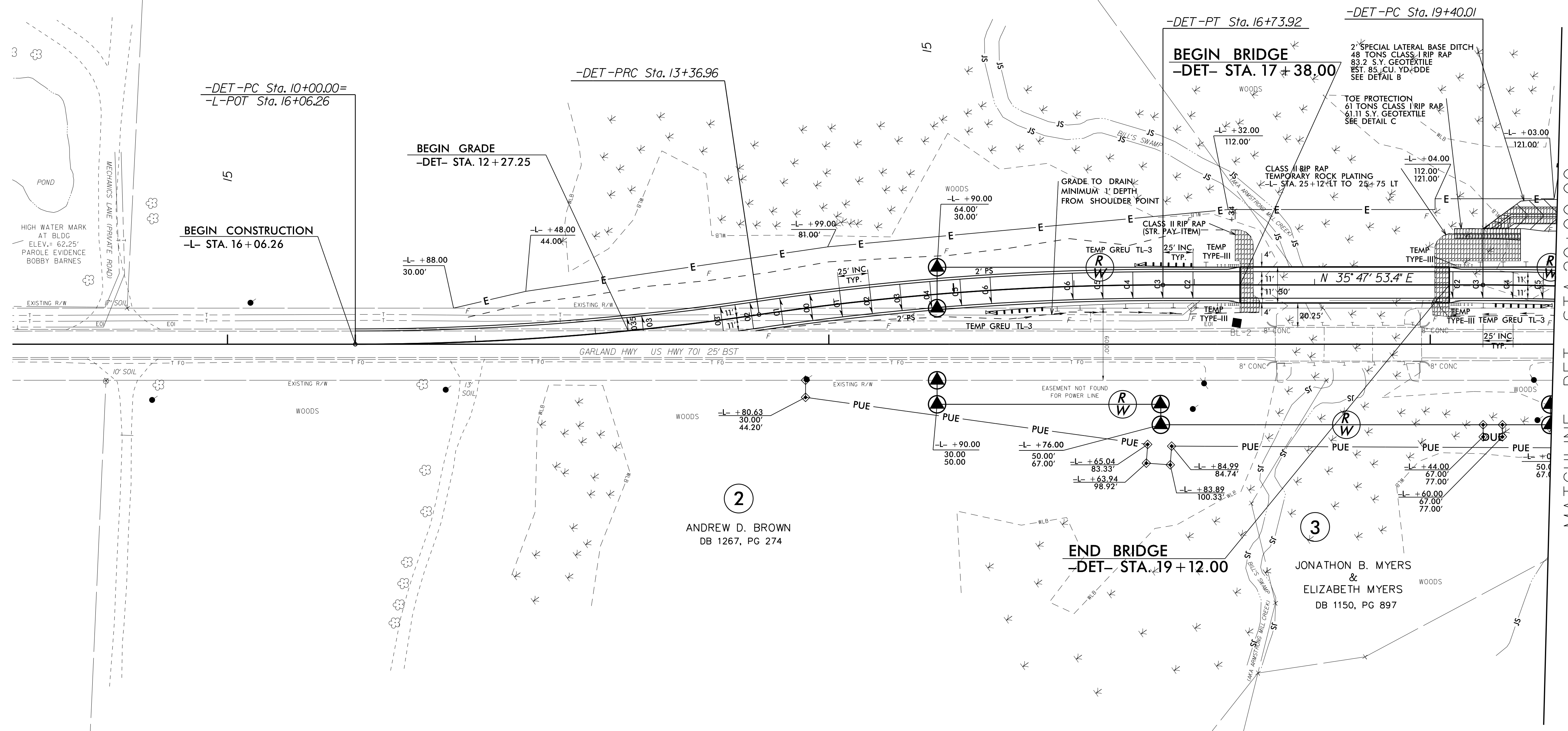


1
BOBBY L. BARNES
DB 2012, PG 336

3
JONATHAN B. MYERS
&
ELIZABETH MYERS
DB 1150, PG 897

2
ANDREW D. BROWN
DB 1267, PG 274

3
JONATHAN B. MYERS
&
ELIZABETH MYERS
DB 1150, PG 897



-DET-		
PI Sta 11+68.78	PI Sta 15+05.74	PI Sta 21+19.95
$\Delta = 8^{\circ} 23' 38.5"$ (LT)	$\Delta = 8^{\circ} 23' 38.5"$ (RT)	$\Delta = 8^{\circ} 56' 48.7"$ (RT)
D = 2' 29' 28.0"	D = 2' 29' 28.0"	D = 2' 29' 28.0"
L = 336.96'	L = 336.96'	L = 359.15'
T = 168.78'	T = 168.78'	T = 179.94'
R = 2,300.00'	R = 2,300.00'	R = 2,300.00'
e = 0.035	e = 0.04	e = 0.04
RO = 100'	RO = 100'	RO = 100'

FOR -DET- PROFILE, SEE SHEET 5

REVISIONS

8/17/99
26-SEP-2023 12:35
R:\Projects\2023\BR0046_PSH2B-1.dgn
JONATHAN B. MYERS