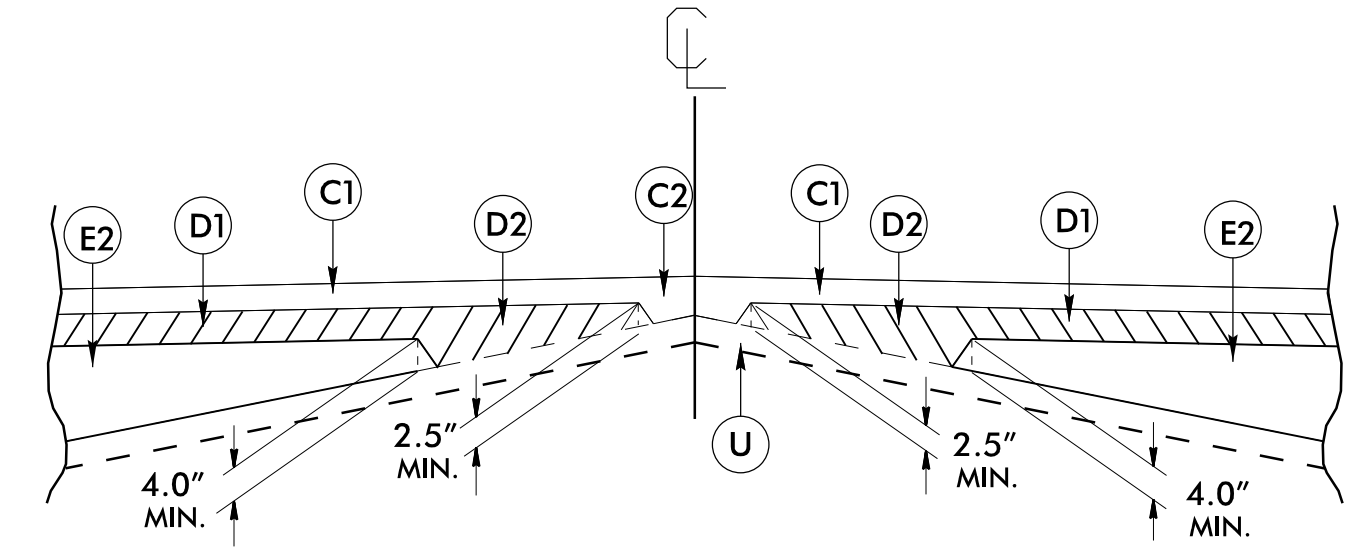


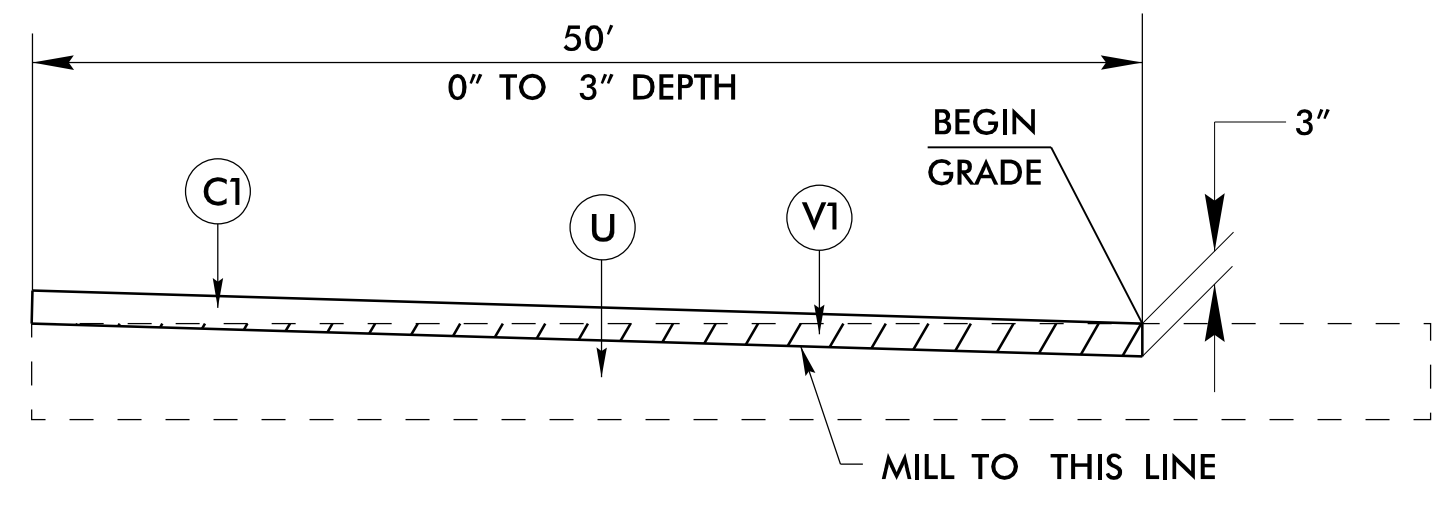
6/2/99

PAVEMENT SCHEDULE	
FINAL PAVEMENT DESIGN	
C1	PROP. APPROX. 3.0" ASPHALT CONCRETE SURFACE COURSE, TYPE S9.5B, AT AN AVERAGE RATE OF 165 LBS. PER SQ. YD. IN EACH OF TWO LAYERS.
C2	PROP. VAR. DEPTH ASPHALT CONCRETE SURFACE COURSE, TYPE S9.5B, AT AN AVERAGE RATE OF 110 LBS. PER SQ. YD. PER 1" DEPTH. TO BE PLACED IN LAYERS NOT TO EXCEED 1 1/2" IN DEPTH.
D1	PROP. APPROX. 2.5" ASPHALT CONCRETE INTERMEDIATE COURSE, TYPE I19.0C, AT AN AVERAGE RATE OF 285 LBS. PER SQ. YD.
D2	PROP. VAR. DEPTH ASPHALT CONCRETE INTERMEDIATE COURSE, TYPE I19.0C, AT AN AVERAGE RATE OF 114 LBS. PER SQ. YD. PER 1" DEPTH. TO BE PLACED IN LAYERS NOT LESS THAN 2 1/2" IN DEPTH OR GREATER THAN 4" IN DEPTH.
E1	PROP. APPROX. 4.0" ASPHALT CONCRETE BASE COURSE, TYPE B25.0C, AT AN AVERAGE RATE OF 456 LBS. PER SQ. YD.
E2	PROP. VAR. DEPTH ASPHALT CONCRETE BASE COURSE, TYPE B25.0C, AT AN AVERAGE RATE OF 114 LBS. PER SQ. YD. PER 1" DEPTH. TO BE PLACED IN LAYERS NOT GREATER THAN 5.5" IN DEPTH OR LESS THAN 3" IN DEPTH
J	PROP. 6" AGGREGATE BASE COURSE
P	PRIME COAT AT THE RATE OF .35 GAL PER SQ. YARD
R	SHOULDER BERM GUTTER
T	EARTH MATERIAL
U	EXISTING PAVEMENT
V1	MILLING EXISTING ASPHALT PAVEMENT, VARIABLE DEPTH
V2	MILLING EXISTING ASPHALT PAVEMENT, 3" DEPTH
W	VARIABLE DEPTH ASPHALT PAVEMENT (SEE DETAIL SHOWING METHOD OF WEDGING)

NOTE: PAVEMENT EDGE SLOPES ARE 1:1 UNLESS SHOWN OTHERWISE

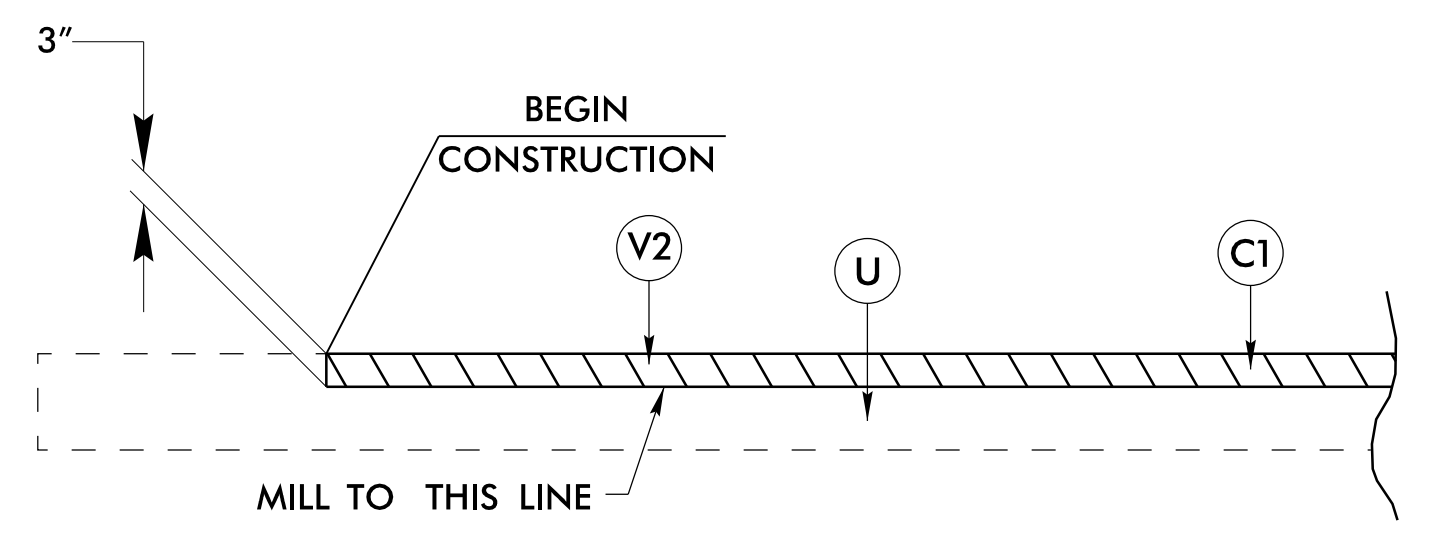


Detail Showing Method of Wedging



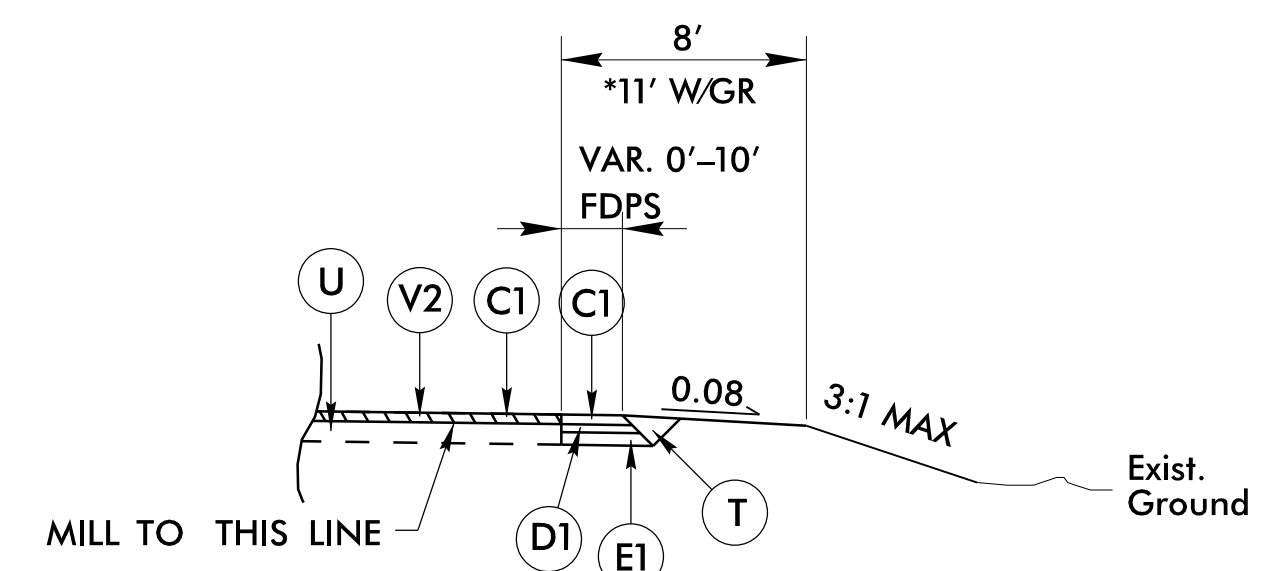
Detail of Incidental Milling at Pavement Tie-ins

-L- STA. 21+00.00 TO -L- STA. 21+50.00  
 -L- STA. 26+50.00 TO -L- STA. 27+00.00



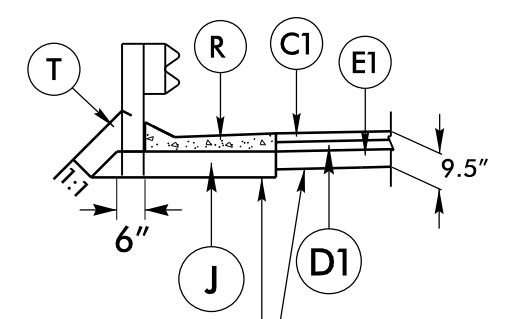
Milling Detail

-L- STA. 20+00.00 TO -L- STA. 21+00.00



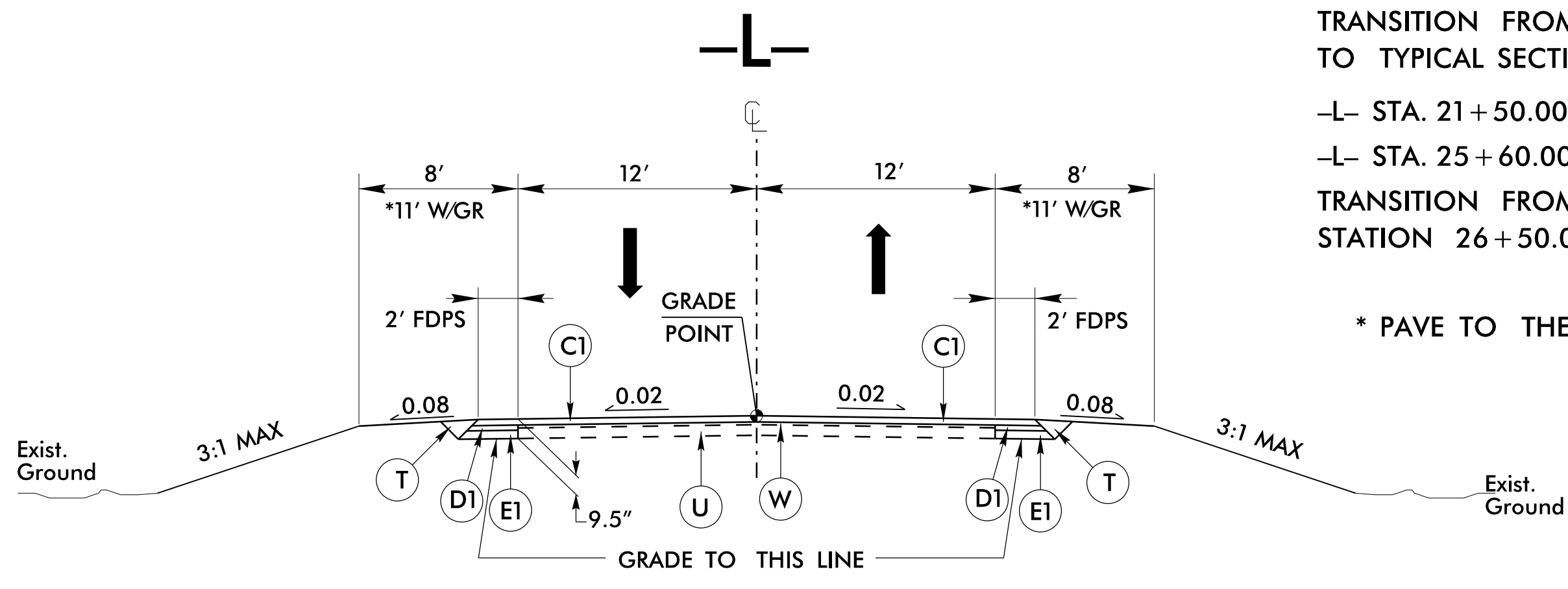
Shoulder Widening Detail

USE WITH MILLING DETAIL  
 -L- STA. 20+00.00 TO 21+00.00



DETAIL SHOWING SHOULDER BERM GUTTER

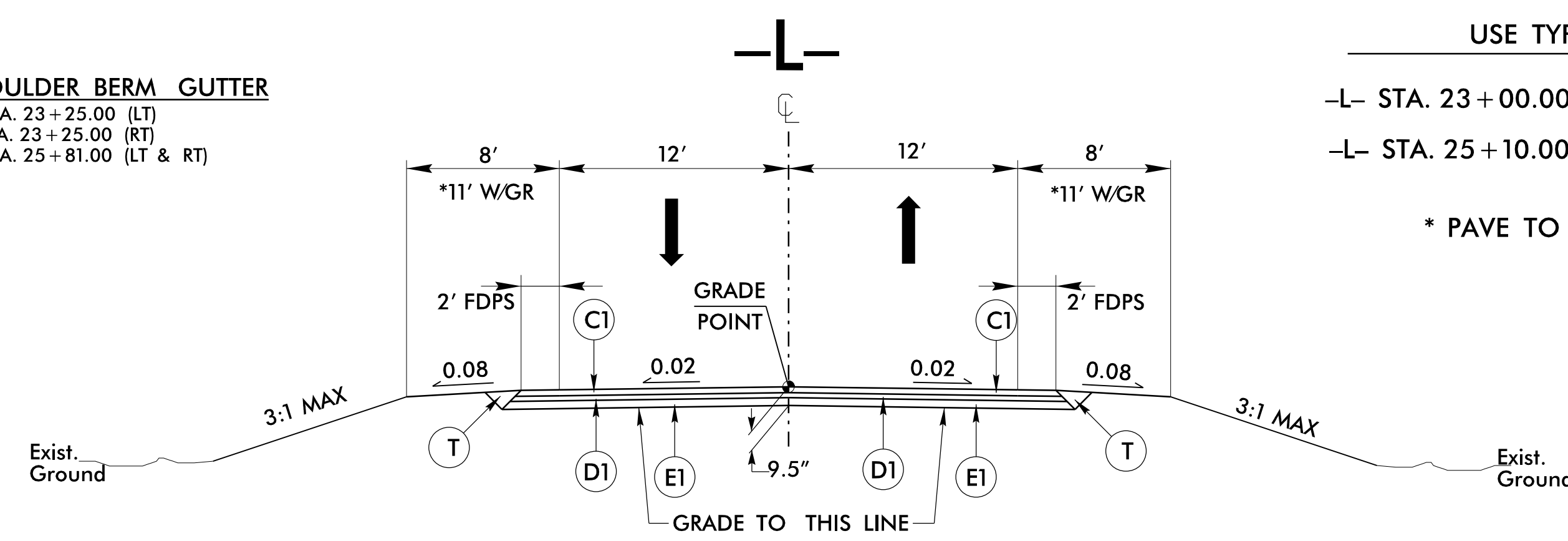
-L- STA. 22+84.00 TO -L- STA. 23+25.00 (LT)  
 -L- STA. 21+30.00 TO -L- STA. 23+25.00 (RT)  
 -L- STA. 25+35.00 TO -L- STA. 25+81.00 (LT & RT)



TYPICAL SECTION NO. 1

USE TYPICAL SECTION NO. 1  
 TRANSITION FROM EXISTING AT -L- STATION 21+00.00 TO TYPICAL SECTION NO. 1 AT -L- STATION 21+50.00  
 -L- STA. 21+50.00 TO -L- STA. 23+00.00  
 -L- STA. 25+60.00 TO -L- STA. 26+50.00  
 TRANSITION FROM TYPICAL SECTION No. 1 AT -L- STATION 26+50.00 TO EXISTING AT -L- STA. 27+00.00

\* PAVE TO THE FACE OF GUARDRAIL



TYPICAL SECTION NO. 2

USE TYPICAL SECTION NO. 2  
 -L- STA. 23+00.00 TO STA. 23+50.00 (BEGIN BRIDGE)  
 -L- STA. 25+10.00 (END BRIDGE) TO -L- STA. 25+60.00

\* PAVE TO THE FACE OF GUARDRAIL

PROJECT REFERENCE NO. BR-0046	SHEET NO. 2A-1
ROADWAY DESIGN ENGINEER MATTHEW B. COPPEL SEAL 027771 11/15/2023	PAVEMENT DESIGN ENGINEER ANDREW D. WARGO SEAL 044590 11/15/2023

DOCUMENT NOT CONSIDERED FINAL UNLESS ALL SIGNATURES COMPLETED

14 NOV 2023 11:22 AM BR0046.Rdy\_tvp.dgn