



December 9, 2020

Mr. Christopher Tripp
On-Scene Coordinator
U.S. Environmental Protection Agency, Region 4
61 Forsyth Street, SW
Atlanta, Georgia 30303

**Subject: Removal Site Evaluation Report
Davidson Community Asbestos
Davidson, Mecklenburg County, North Carolina
EPA Contract No.: 68HE0519D0006
Task Order / Task Order Line Item No.: 68HE0419F0097 / 97-005**

Dear Mr. Tripp:

The Tetra Tech, Inc. (Tetra Tech) Superfund Technical Assessment and Response Team (START) submits this letter report summarizing removal site evaluation (RSE) activities at the Davidson Community Asbestos RSE site (the Site) in Davidson, Mecklenburg County, North Carolina. This report includes five enclosures and one attachment. Figures are in Enclosure 1. A summary of sampling data is in Enclosure 2. Field logbook notes are in Enclosure 3. The photographic log is in Enclosure 4. The Table of Witnesses is in Enclosure 5. Attachment 1 is the Tetra Tech sub-contract laboratory data package.

BACKGROUND

The Davidson Community Asbestos Site is in a residential area of Davidson, Mecklenburg County, North Carolina. The Site surrounds a former asbestos mill at 219 Depot Street. Surrounding properties vary in size. Coordinates at the Site (as measured from the approximate center of the former asbestos mill) are latitude 35.50054 degrees north and longitude 80.85086 degrees west (see Figures 1 and 2 in Enclosure 1).

First developed around 1890, the mill was occupied by numerous industrial operations, including an asbestos shingle manufacturer. Reportedly, the manufacturer buried asbestos tailings and other asbestos-related wastes in a low depression (disposal area) on the western side of the Site.¹

In February 1984, a resident found her child covered in “a whitish material” after playing in an open portion of the Site. The resident filed a complaint with the Mecklenburg County Department of Environmental Health (MCDEH). Responding to the complaint in that same month of February 1984, MCDEH collected 66 surface and shallow-subsurface soil samples at and near the Site: 62 samples on Site and four samples off Site. Of the 62 samples collected on Site, the asbestos content of one sample was less than 1 percent, 17 samples had asbestos concentrations between 1 and 10 percent, 33 samples had asbestos concentrations between 11 and 30 percent, and 11 samples had asbestos concentrations greater than 30 percent. All four off-Site samples contained asbestos concentrations exceeding 1 percent.

¹ Background information from “Davidson Depot Site Summary,” prepared by the North Carolina Department of Environmental Quality (NCDEQ) Brownfields, September 21, 2016.



As a result of those findings, the County required the then-owner to take actions to address the exposure risk at the Site. In late 1984, the on-Site disposal area was closed. A portion of the disposal area was capped with soil, compacted, and covered with vegetation. The other portion was covered with an asphalt parking lot. In July 1984, MCDEH deemed the Site in compliance with mandated requirements.

In February 2002, MACTEC completed a subsurface asbestos investigation and advanced 36 borings on the Site as part of a brownfields assessment. Based on results from the borings, MACTEC estimated that 2,100 to 2,300 cubic yards of asbestos-containing material (ACM) was buried at the Site.

In 2015, the North Carolina Department of Environmental Quality (NCDEQ) deemed the Site eligible for its Brownfields Program. As part of additional development of the Site, additional soil testing was conducted on behalf of a prospective developer. The developer submitted a plan for addressing a portion of the on-Site asbestos contamination. This plan is still under review and development.

In 2016 and 2017, the U.S. Environmental Protection Agency (EPA) Region 4 assessed soil, sediment, and air in the surrounding neighborhood to address community concerns regarding possible impacts off the Site from the historical dumping and burial of ACM on the Site. At numerous parcels, asbestos was detected in soils at levels exceeding the site-specific criteria for removal (0.25 percent asbestos or greater via California Air Resources Board [CARB] Method 435 analysis, or 100,000 phase contrast microscopy equivalent structures per gram (PCMe s/g) via fluidized bed analysis [FBA]).

From May to September 2017, EPA conducted removal and restoration at the 32 parcels identified as meeting the site-specific criteria for removal.

In late 2019 and early 2020, members of the Davidson community requested asbestos testing at additional parcels. NCDEQ and EPA agreed to expand the study area, and to pursue access agreements from property owners who had denied or had not responded to access solicitations during the 2016/2017 assessment. Additionally, an assessment on behalf of the Town of Davidson, as part of improvements proposed at Roosevelt Wilson Park, identified asbestos in surface and subsurface soils. The North Carolina Department of Transportation (NCDOT) also conducted asbestos assessment work in surface and subsurface soils as part of a proposed sidewalk and road improvement project along Potts Street, Sloan Street, Griffith Street, and Beaty Street.

Based on these requests and assessment results, EPA tasked START with conducting an RSE in the additional parcels, Roosevelt Wilson Park, and in rights-of-way along the proposed NCDOT project. This report details results of the RSE.



ASSESSMENT ACTIVITIES

START conducted assessment work in accordance with the approved Final *Quality Assurance Project Plan: Davidson Community Asbestos* (QAPP), dated May 18, 2020. The QAPP proposed a sampling protocol that mirrored the protocol followed in the 2016/2017 assessment. START conceptually divided parcels into decision units (DU) (e.g., front yard, back yard, garden). Within each DU, START sampling teams used AMS Gator Probes to collect 5-point composite soil samples within the intervals of 0 to 3 and 3 to 6 inches below ground surface (bgs). At the Ada Jenkins Center in the raised planter beds, START collected an additional soil sample within the 6- to 12-inch bgs interval. The sampling teams also collected bulk material samples of observed ACM such as weathered chunks of tile in driveways of residences. In total, START collected 511 soil samples and four bulk material samples over the course of six field events.

START submitted all samples to EMSL Analytical, Inc. of Cinnaminson, New Jersey. EMSL analyzed all soil samples for asbestos content via CARB Method 435, and all bulk material samples according to EPA Method 600/R-93 via polarized light microscopy (PLM). Soil samples found to contain asbestos concentration less than 0.25 percent via CARB underwent FBA.

Figure 2 in Enclosure 1 depicts locations of parcels sampled during the RSE.

RESULTS

No asbestos was detected in 488 of the soil samples collected. Of the remaining 23 soil samples, 10 contained asbestos at less than 0.25 percent, and three contained asbestos at concentrations ranging from 0.25 to 1.75 percent. The 10 samples with asbestos concentrations less than 0.25 percent were submitted for FBA. Asbestos concentrations in the bulk material samples ranged from non-detect to 20 percent chrysotile asbestos.

Sampling locations and results are summarized in Enclosure 2. Laboratory data packages are in Attachment 1.

EPA Region 4 Scientific Support Section determined that concentrations meeting or exceeding any of the following levels rendered a parcel eligible for consideration for a removal action:

- Soil with an asbestos content equal to or greater than 0.25 percent, as determined via CARB Method 435 analysis;
- Parcels containing bulk material equal to or greater than 1 percent ACM; and,
- Soil with total PCMe structures exceeding 100,000 PCMe s/g, as determined via FBA.

Based on this RSE, the following DUs at eight parcels meet the criteria for removal:

- 159 Mock Road: 0.25 percent asbestos in back yard surface soil and 0.75 percent asbestos in backyard subsurface soil;
- 207 Mock Road: 0.25 percent asbestos in front yard subsurface soil;
- 416 Brandon Street: 195,701 PCMe s/g in front yard surface soil;



Mr. Christopher Tripp

December 9, 2020

Page 4

- 216 Crane Street: 0.50 percent asbestos in front yard surface soil;
- Roosevelt Wilson Park: 0.25 percent asbestos in the northern central portion of the park near Griffith Street;
- 235 Crane Street: 0.25 percent asbestos in front yard surface soil;
- 445 Brandon Street: 20 percent ACM bulk material in the driveway; and,
- 136 Mock Circle: 20 percent bulk material in the driveway and runoff pathway, 1.5 percent asbestos in the front yard surface soil, 0.75 percent asbestos in the front yard subsurface, 1.25 percent asbestos in the back yard surface soil, and 1.75 percent asbestos in the back yard subsurface.

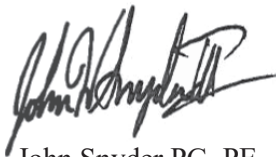
CONCLUSIONS

START evaluated asbestos present in parcels in the vicinity of the former asbestos mill during the RSE. All soil and bulk material sampling results have been forwarded to the EPA Region 4 Scientific Support Section for a risk evaluation. Based on the criteria specified at the beginning of the project, eight parcels should be considered for a removal action.

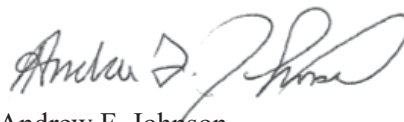
This RSE was limited to properties for which EPA and NCDEQ were able to secure signed access agreements. Sampling results from one area should not be used to draw conclusions about asbestos content of soils in other areas.

If you have any questions or need additional copies of this letter report, please call me, John Snyder, at (678) 775-3085.

Sincerely,



John Snyder PG, PE
Tetra Tech START V Project Manager



Andrew F. Johnson
Tetra Tech START V Program Manager

Enclosures (5)

Attachments (1)

cc: Katrina Jones, EPA Project Officer
Angel Reed, Tetra Tech START V Document Control Coordinator

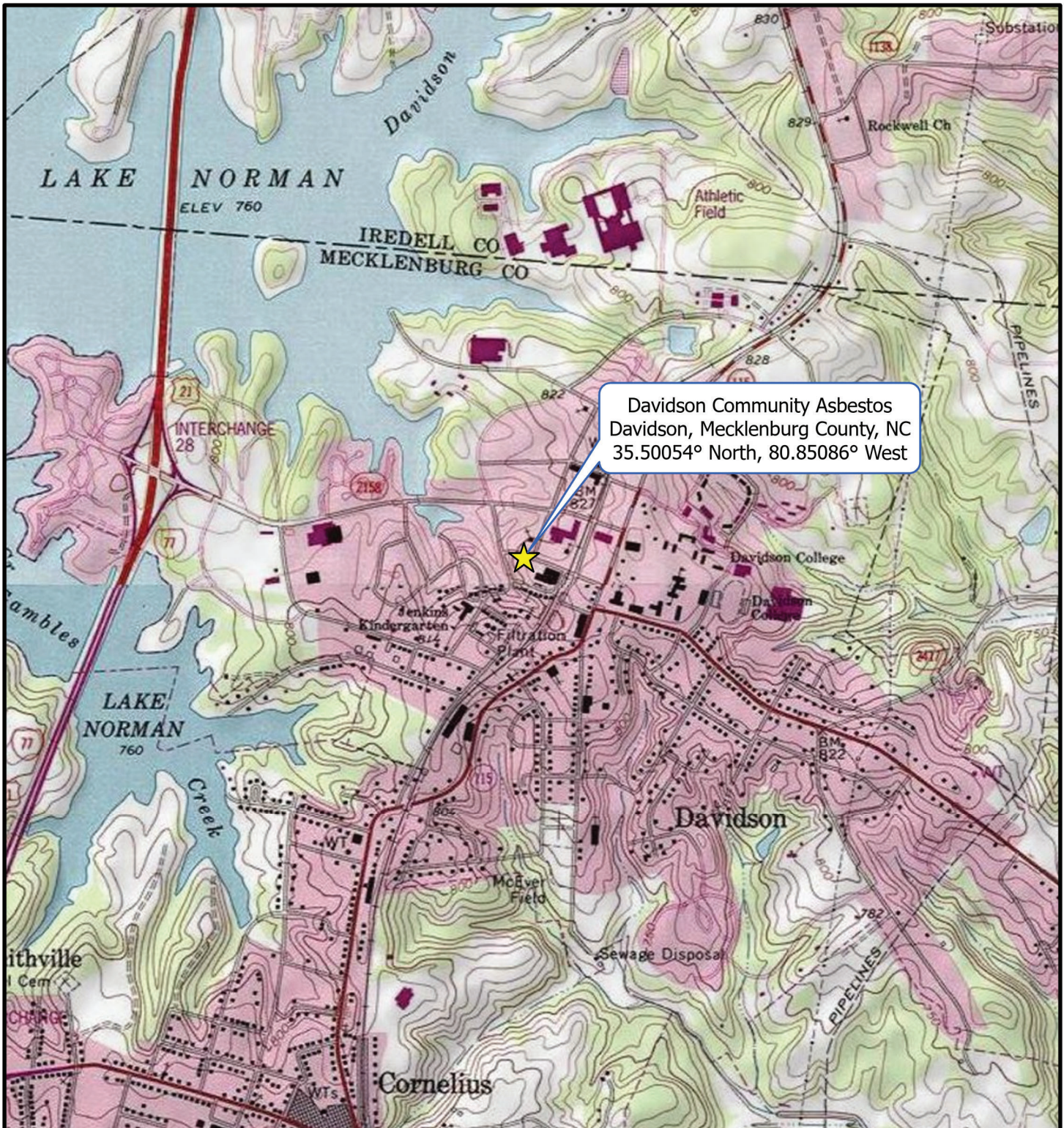


ENCLOSURE 1

FIGURES

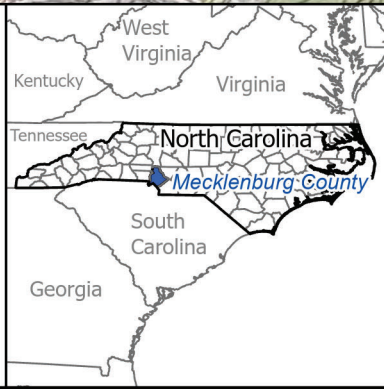
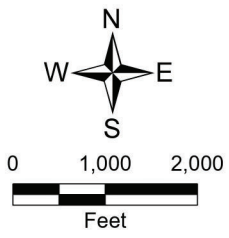
(Two Pages)





Davidson Community Asbestos
 Davidson, Mecklenburg County, NC
 35.50054° North, 80.85086° West

Legend
 ★ Site Location



United States
 Environmental Protection Agency
 Region 4

FIGURE 1

Site Location

Site Name: Davidson Community Asbestos
TOLIN No.: 97-005
City: Davidson **County:** Mecklenburg **State:** North Carolina



Date: 11/17/2020
Analyst: GREG DOECKAL

Map Source:
 USGS 7.5 Minute Topographic Quadrangle Maps:
 Cornelius, NC 1978 and Mooresville, NC 1979.

Legend

Status

- Access Requested
- Access Denied
- Sampled - No Further Action Required
- Sampled - Further Action Required





Map Source:
Bing Maps Hybrid.



United States
Environmental Protection Agency
Region 4



FIGURE 2


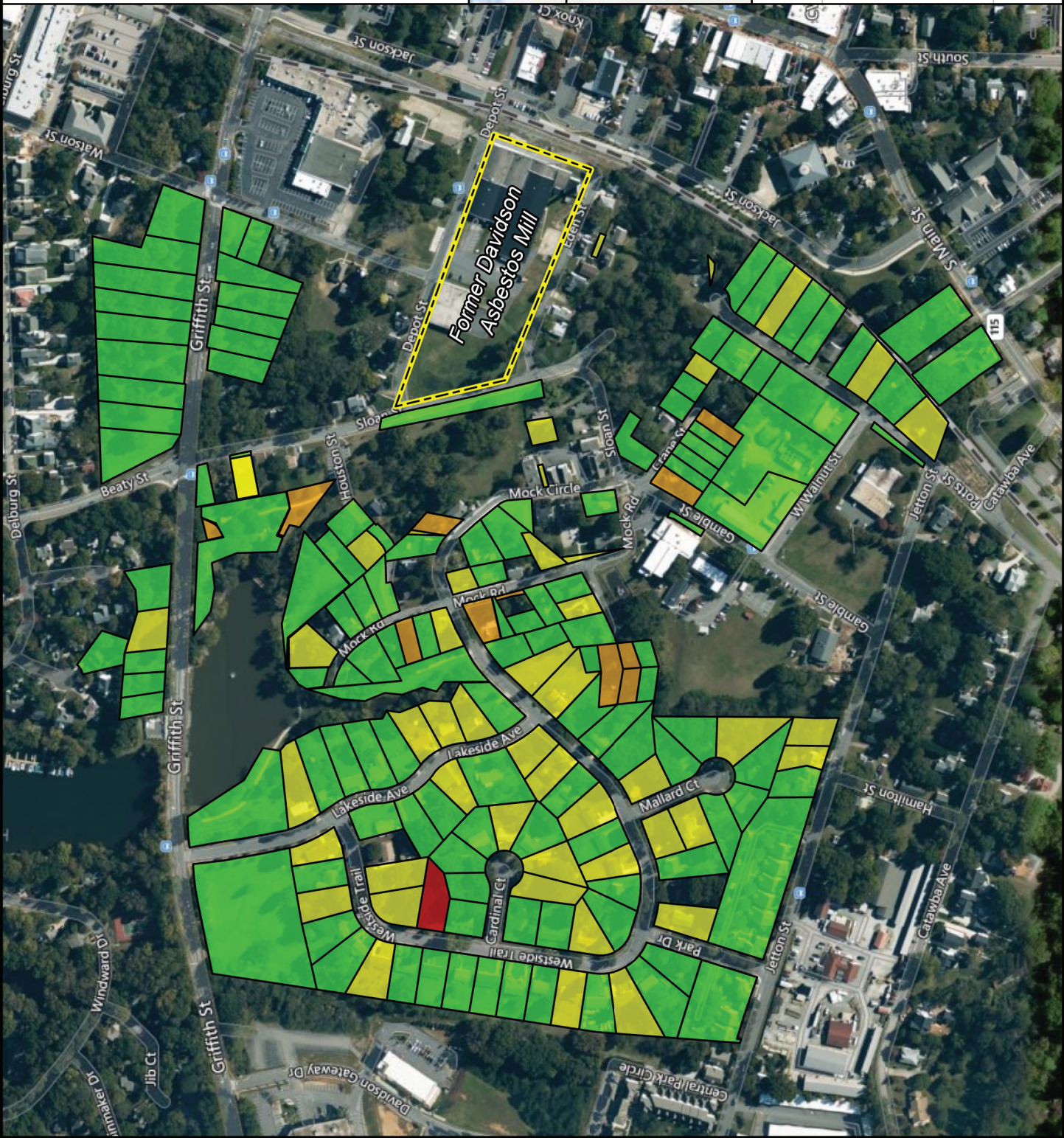
Site Status

Site Name: Davidson Community
Asbestos

TOLIN No.: 97-005

City: Davidson **County:** Mecklenburg **State:** North Carolina

Date: 11/23/2020
Analyst: GREG.DOCSEKAL

ENCLOSURE 2

TABLE

(13 Pages)



**DAVIDSON COMMUNITY ASBESTOS REMOVAL SITE EVALUATION
DAVIDSON, MECKLENBURG COUNTY, NORTH CAROLINA
SAMPLE SUMMARY**

Street Address	Sample ID	Date Collected	Location Description	Depth Collected	Analytical Results
321 Watson Street	DCA-SF-321WATSON-BY	6/8/2020	Back Yard	0 to 3 Inches Below Ground Surface	No Asbestos Detected
	DCA-SB-321WATSON-BY	6/8/2020		3 to 6 Inches Below Ground Surface	No Asbestos Detected
	DCA-SF-321WATSON-FY	6/8/2020	Front Yard	0 to 3 Inches Below Ground Surface	No Asbestos Detected
	DCA-SB-321WATSON-FY	6/8/2020		3 to 6 Inches Below Ground Surface	No Asbestos Detected
314 Griffith Street	DCA-SF-314GRIFFITH-FY	6/8/2020	Front Yard	0 to 3 Inches Below Ground Surface	No Asbestos Detected
	DCA-SB-314GRIFFITH-FY	6/8/2020		3 to 6 Inches Below Ground Surface	No Asbestos Detected
320 Griffith Street	DCA-SF-320GRIFFITH-FY	6/8/2020	Front Yard	0 to 3 Inches Below Ground Surface	No Asbestos Detected
	DCA-SB-320GRIFFITH-FY	6/8/2020		3 to 6 Inches Below Ground Surface	No Asbestos Detected
322 Griffith Street	DCA-SF-322GRIFFITH-FY	6/8/2020	Front Yard	0 to 3 Inches Below Ground Surface	No Asbestos Detected
	DCA-SB-322GRIFFITH-FY	6/8/2020		3 to 6 Inches Below Ground Surface	No Asbestos Detected
324 Griffith Street	DCA-SF-324GRIFFITH-FY	6/8/2020	Front Yard	0 to 3 Inches Below Ground Surface	No Asbestos Detected
	DCA-SB-324GRIFFITH-FY	6/8/2020		3 to 6 Inches Below Ground Surface	No Asbestos Detected
	DCA-SF-324GRIFFITH-BY	6/8/2020	Back Yard	0 to 3 Inches Below Ground Surface	No Asbestos Detected
	DCA-SB-324GRIFFITH-BY	6/8/2020		3 to 6 Inches Below Ground Surface	No Asbestos Detected
330 Griffith Street	DCA-SF-330GRIFFITH-FY	6/8/2020	Front Yard	0 to 3 Inches Below Ground Surface	No Asbestos Detected
	DCA-SB-330GRIFFITH-FY	6/8/2020		3 to 6 Inches Below Ground Surface	No Asbestos Detected
336 Griffith Street	DCA-SF-336GRIFFITH-FY	6/8/2020	Front Yard	0 to 3 Inches Below Ground Surface	No Asbestos Detected
	DCA-SB-336GRIFFITH-FY	6/8/2020		3 to 6 Inches Below Ground Surface	No Asbestos Detected
348 Griffith Street	DCA-SF-348GRIFFITH-FY	6/8/2020	Front Yard	0 to 3 Inches Below Ground Surface	No Asbestos Detected
	DCA-SB-348GRIFFITH-FY	6/8/2020		3 to 6 Inches Below Ground Surface	No Asbestos Detected
356 Griffith Street	DCA-SF-356GRIFFITH-FY	6/8/2020	Front Yard	0 to 3 Inches Below Ground Surface	No Asbestos Detected
	DCA-SB-356GRIFFITH-FY	6/8/2020		3 to 6 Inches Below Ground Surface	No Asbestos Detected
	DCA-SF-356GRIFFITH-BY	6/8/2020	Back Yard	0 to 3 Inches Below Ground Surface	No Asbestos Detected
	DCA-SB-356GRIFFITH-BY	6/8/2020		3 to 6 Inches Below Ground Surface	No Asbestos Detected
243 Watson Street	DCA-SF-243WATSON-FY	6/8/2020	Front Yard	0 to 3 Inches Below Ground Surface	No Asbestos Detected
	DCA-SB-243WATSON-FY	6/8/2020		3 to 6 Inches Below Ground Surface	No Asbestos Detected
	DCA-SF-243WATSON-BY	6/8/2020	Back Yard	0 to 3 Inches Below Ground Surface	No Asbestos Detected
	DCA-SB-243WATSON-BY	6/8/2020		3 to 6 Inches Below Ground Surface	No Asbestos Detected
315 Griffith Street	DCA-SF-315GRIFFITH-FY	6/8/2020	Front Yard	0 to 3 Inches Below Ground Surface	No Asbestos Detected
	DCA-SB-315GRIFFITH-FY	6/8/2020		3 to 6 Inches Below Ground Surface	No Asbestos Detected
	DCA-SF-315GRIFFITH-BY	6/8/2020	Back Yard	0 to 3 Inches Below Ground Surface	No Asbestos Detected
	DCA-SB-315GRIFFITH-BY	6/8/2020		3 to 6 Inches Below Ground Surface	No Asbestos Detected
319 Griffith Street	DCA-SF-319GRIFFITH-FY	6/8/2020	Front Yard	0 to 3 Inches Below Ground Surface	No Asbestos Detected
	DCA-SB-319GRIFFITH-FY	6/8/2020		3 to 6 Inches Below Ground Surface	No Asbestos Detected
	DCA-SF-319GRIFFITH-BY	6/8/2020	Back Yard	0 to 3 Inches Below Ground Surface	No Asbestos Detected
	DCA-SB-319GRIFFITH-BY	6/8/2020		3 to 6 Inches Below Ground Surface	No Asbestos Detected
325 Griffith Street	DCA-SF-325GRIFFITH-FY	6/8/2020	Front Yard	0 to 3 Inches Below Ground Surface	No Asbestos Detected
	DCA-SB-325GRIFFITH-FY	6/8/2020		3 to 6 Inches Below Ground Surface	No Asbestos Detected
331 Griffith Street	DCA-SF-331GRIFFITH-FY	6/8/2020	Front Yard	0 to 3 Inches Below Ground Surface	No Asbestos Detected
	DCA-SB-331GRIFFITH-FY	6/8/2020		3 to 6 Inches Below Ground Surface	No Asbestos Detected
	DCA-SF-331GRIFFITH-BY	6/8/2020	Back Yard	0 to 3 Inches Below Ground Surface	No Asbestos Detected
	DCA-SB-331GRIFFITH-BY	6/8/2020		3 to 6 Inches Below Ground Surface	No Asbestos Detected

**DAVIDSON COMMUNITY ASBESTOS REMOVAL SITE EVALUATION
DAVIDSON, MECKLENBURG COUNTY, NORTH CAROLINA
SAMPLE SUMMARY**

Street Address	Sample ID	Date Collected	Location Description	Depth Collected	Analytical Results
335 Griffith Street	DCA-SF-335GRIFFITH-FY	6/8/2020	Front Yard	0 to 3 Inches Below Ground Surface	No Asbestos Detected
	DCA-SB-335GRIFFITH-FY	6/8/2020		3 to 6 Inches Below Ground Surface	No Asbestos Detected
	DCA-SF-335GRIFFITH-BY	6/8/2020	Back Yard	0 to 3 Inches Below Ground Surface	No Asbestos Detected
	DCA-SB-335GRIFFITH-BY	6/8/2020		3 to 6 Inches Below Ground Surface	No Asbestos Detected
432 Griffith Street	DCA-SF-432GRIFFITH-RSY	6/9/2020	Right Side Yard	0 to 3 Inches Below Ground Surface	No Asbestos Detected
	DCA-SB-432GRIFFITH-RSY	6/9/2020		3 to 6 Inches Below Ground Surface	No Asbestos Detected
	DCA-SF-432GRIFFITH-LSY	6/9/2020	Left Side Yard	0 to 3 Inches Below Ground Surface	No Asbestos Detected
	DCA-SB-432GRIFFITH-LSY	6/9/2020		3 to 6 Inches Below Ground Surface	No Asbestos Detected
448 Griffith Street	DCA-SF-448GRIFFITH-FY	6/9/2020	Front Yard	0 to 3 Inches Below Ground Surface	No Asbestos Detected
	DCA-SB-448GRIFFITH-FY	6/9/2020		3 to 6 Inches Below Ground Surface	No Asbestos Detected
	DCA-SF-448GRIFFITH-BY	6/9/2020	Back Yard	0 to 3 Inches Below Ground Surface	No Asbestos Detected
	DCA-SB-448GRIFFITH-BY	6/9/2020		3 to 6 Inches Below Ground Surface	No Asbestos Detected
456 Griffith Street	DCA-SF-456GRIFFITH-FY	6/9/2020	Front Yard	0 to 3 Inches Below Ground Surface	No Asbestos Detected
	DCA-SB-456GRIFFITH-FY	6/9/2020		3 to 6 Inches Below Ground Surface	No Asbestos Detected
462 Griffith Street	DCA-SF-462GRIFFITH-FY	6/9/2020	Front Yard	0 to 3 Inches Below Ground Surface	No Asbestos Detected
	DCA-SB-462GRIFFITH-FY	6/9/2020		3 to 6 Inches Below Ground Surface	No Asbestos Detected
Park, West of Lake	DCA-SF-PARKWESTLAKE-EAST	6/9/2020	East of Greenway	0 to 3 Inches Below Ground Surface	No Asbestos Detected
	DCA-SB-PARKWESTLAKE-EAST	6/9/2020		3 to 6 Inches Below Ground Surface	No Asbestos Detected
	DCA-SF-PARKWESTLAKE-NW	6/9/2020	Northwest Portion	0 to 3 Inches Below Ground Surface	No Asbestos Detected
	DCA-SB-PARKWESTLAKE-NW	6/9/2020		3 to 6 Inches Below Ground Surface	No Asbestos Detected
	DCA-SF-PARKWESTLAKE-SOUTH	6/9/2020	Southern Portion	0 to 3 Inches Below Ground Surface	No Asbestos Detected
	DCA-SB-PARKWESTLAKE-SOUTH	6/9/2020		3 to 6 Inches Below Ground Surface	No Asbestos Detected
Park, SW corner of Lakeside Ave and Griffith St	DCA-SF-PARKGRIFFLAKESIDE-NE	6/9/2020	Northeast Portion	0 to 3 Inches Below Ground Surface	No Asbestos Detected
	DCA-SB-PARKGRIFFLAKESIDE-NE	6/9/2020		3 to 6 Inches Below Ground Surface	No Asbestos Detected
	DCA-SF-PARKGRIFFLAKESIDE-NW	6/9/2020	Northwest Portion	0 to 3 Inches Below Ground Surface	No Asbestos Detected
	DCA-SB-PARKGRIFFLAKESIDE-NW	6/9/2020		3 to 6 Inches Below Ground Surface	No Asbestos Detected
	DCA-SF-PARKGRIFFLAKESIDE-SE	6/9/2020	Southeast Portion	0 to 3 Inches Below Ground Surface	No Asbestos Detected
	DCA-SB-PARKGRIFFLAKESIDE-SE	6/9/2020		3 to 6 Inches Below Ground Surface	No Asbestos Detected
	DCA-SF-PARKGRIFFLAKESIDE-SW	6/9/2020	Southwest Portion	0 to 3 Inches Below Ground Surface	No Asbestos Detected
	DCA-SB-PARKGRIFFLAKESIDE-SW	6/9/2020		3 to 6 Inches Below Ground Surface	No Asbestos Detected
240 Lakeside Ave	DCA-SF-240LAKESIDE-FY	6/9/2020	Front Yard	0 to 3 Inches Below Ground Surface	No Asbestos Detected
	DCA-SB-240LAKESIDE-FY	6/9/2020		3 to 6 Inches Below Ground Surface	No Asbestos Detected
	DCA-SF-240LAKESIDE-BY	6/9/2020	Back Yard	0 to 3 Inches Below Ground Surface	No Asbestos Detected
	DCA-SB-240LAKESIDE-BY	6/9/2020		3 to 6 Inches Below Ground Surface	No Asbestos Detected
235 Lakeside Ave	DCA-SF-235LAKESIDE-FY	6/9/2020	Front Yard	0 to 3 Inches Below Ground Surface	No Asbestos Detected
	DCA-SB-235LAKESIDE-FY	6/9/2020		3 to 6 Inches Below Ground Surface	No Asbestos Detected
	DCA-SF-235LAKESIDE-BY	6/9/2020	Back Yard	0 to 3 Inches Below Ground Surface	No Asbestos Detected
	DCA-SB-235LAKESIDE-BY	6/9/2020		3 to 6 Inches Below Ground Surface	No Asbestos Detected
229 Lakeside Ave	DCA-SF-229LAKESIDE-FY	6/9/2020	Front Yard	0 to 3 Inches Below Ground Surface	No Asbestos Detected
	DCA-SB-229LAKESIDE-FY	6/9/2020		3 to 6 Inches Below Ground Surface	No Asbestos Detected
	DCA-SF-229LAKESIDE-BY	6/9/2020	Back Yard	0 to 3 Inches Below Ground Surface	No Asbestos Detected
	DCA-SB-229LAKESIDE-BY	6/9/2020		3 to 6 Inches Below Ground Surface	No Asbestos Detected

**DAVIDSON COMMUNITY ASBESTOS REMOVAL SITE EVALUATION
DAVIDSON, MECKLENBURG COUNTY, NORTH CAROLINA
SAMPLE SUMMARY**

Street Address	Sample ID	Date Collected	Location Description	Depth Collected	Analytical Results
211 Lakeside Ave	DCA-SF-211LAKESIDE-FY	6/9/2020	Front Yard	0 to 3 Inches Below Ground Surface	No Asbestos Detected
	DCA-SB-211LAKESIDE-FY	6/9/2020		3 to 6 Inches Below Ground Surface	No Asbestos Detected
	DCA-SF-211LAKESIDE-BY	6/9/2020	Back Yard	0 to 3 Inches Below Ground Surface	No Asbestos Detected
	DCA-SB-211LAKESIDE-BY	6/9/2020		3 to 6 Inches Below Ground Surface	No Asbestos Detected
204 Lakeside Ave	DCA-SF-204LAKESIDE-LSY	6/9/2020	Left Side Yard	0 to 3 Inches Below Ground Surface	No Asbestos Detected
	DCA-SB-204LAKESIDE-LSY	6/9/2020		3 to 6 Inches Below Ground Surface	No Asbestos Detected
	DCA-SF-204LAKESIDE-RSY	6/9/2020	Right Side Yard	0 to 3 Inches Below Ground Surface	No Asbestos Detected
	DCA-SB-204LAKESIDE-RSY	6/9/2020		3 to 6 Inches Below Ground Surface	No Asbestos Detected
505 Westside Terrace	DCA-SF-505WESTSIDE-FY	6/9/2020	Front Yard	0 to 3 Inches Below Ground Surface	No Asbestos Detected
	DCA-SB-505WESTSIDE-FY	6/9/2020		3 to 6 Inches Below Ground Surface	No Asbestos Detected
	DCA-SF-505WESTSIDE-BY	6/9/2020	Back Yard	0 to 3 Inches Below Ground Surface	No Asbestos Detected
	DCA-SB-505WESTSIDE-BY	6/9/2020		3 to 6 Inches Below Ground Surface	No Asbestos Detected
514 Westside Terrace	DCA-SF-514WESTSIDE-FY	6/9/2020	Front Yard	0 to 3 Inches Below Ground Surface	No Asbestos Detected
	DCA-SB-514WESTSIDE-FY	6/9/2020		3 to 6 Inches Below Ground Surface	No Asbestos Detected
	DCA-SF-514WESTSIDE-BY	6/9/2020	Back Yard	0 to 3 Inches Below Ground Surface	No Asbestos Detected
	DCA-SB-514WESTSIDE-BY	6/9/2020		3 to 6 Inches Below Ground Surface	No Asbestos Detected
101 Mallard Court	DCA-SF-101MALLARD-FY	6/9/2020	Front Yard	0 to 3 Inches Below Ground Surface	No Asbestos Detected
	DCA-SB-101MALLARD-FY	6/9/2020		3 to 6 Inches Below Ground Surface	No Asbestos Detected
	DCA-SF-101MALLARD-BY	6/9/2020	Back Yard	0 to 3 Inches Below Ground Surface	No Asbestos Detected
	DCA-SB-101MALLARD-BY	6/9/2020		3 to 6 Inches Below Ground Surface	No Asbestos Detected
105 Mallard Court	DCA-SF-105MALLARD-FY	6/9/2020	Front Yard	0 to 3 Inches Below Ground Surface	No Asbestos Detected
	DCA-SB-105MALLARD-FY	6/9/2020		3 to 6 Inches Below Ground Surface	No Asbestos Detected
	DCA-SF-105MALLARD-BY	6/9/2020	Back Yard	0 to 3 Inches Below Ground Surface	No Asbestos Detected
	DCA-SB-105MALLARD-BY	6/9/2020		3 to 6 Inches Below Ground Surface	No Asbestos Detected
528 Westside Terrace	DCA-SF-528WESTSIDE-FY	6/9/2020	Front Yard	0 to 3 Inches Below Ground Surface	No Asbestos Detected
	DCA-SB-528WESTSIDE-FY	6/9/2020		3 to 6 Inches Below Ground Surface	No Asbestos Detected
	DCA-SF-528WESTSIDE-BY	6/9/2020	Back Yard	0 to 3 Inches Below Ground Surface	No Asbestos Detected
	DCA-SB-528WESTSIDE-BY	6/9/2020		3 to 6 Inches Below Ground Surface	No Asbestos Detected
540 Westside Terrace	DCA-SF-540WESTSIDE-FY	6/9/2020	Front Yard	0 to 3 Inches Below Ground Surface	No Asbestos Detected
	DCA-SB-540WESTSIDE-FY	6/9/2020		3 to 6 Inches Below Ground Surface	No Asbestos Detected
	DCA-SF-540WESTSIDE-BY	6/9/2020	Back Yard	0 to 3 Inches Below Ground Surface	No Asbestos Detected
	DCA-SB-540WESTSIDE-BY	6/9/2020		3 to 6 Inches Below Ground Surface	No Asbestos Detected
663 Westside Terrace	DCA-SF-663WESTSIDE-FY	6/9/2020	Front Yard	0 to 3 Inches Below Ground Surface	No Asbestos Detected
	DCA-SB-663WESTSIDE-FY	6/9/2020		3 to 6 Inches Below Ground Surface	No Asbestos Detected
	DCA-SF-663WESTSIDE-BY	6/9/2020	Back Yard	0 to 3 Inches Below Ground Surface	No Asbestos Detected
	DCA-SB-663WESTSIDE-BY	6/9/2020		3 to 6 Inches Below Ground Surface	No Asbestos Detected
668 Westside Terrace	DCA-SF-668WESTSIDE-FY	6/9/2020	Front Yard	0 to 3 Inches Below Ground Surface	No Asbestos Detected
	DCA-SB-668WESTSIDE-FY	6/9/2020		3 to 6 Inches Below Ground Surface	No Asbestos Detected
	DCA-SF-668WESTSIDE-BY	6/9/2020	Back Yard	0 to 3 Inches Below Ground Surface	No Asbestos Detected
	DCA-SB-668WESTSIDE-BY	6/9/2020		3 to 6 Inches Below Ground Surface	No Asbestos Detected
652 Westside Terrace	DCA-SF-652WESTSIDE-FY	6/9/2020	Front Yard	0 to 3 Inches Below Ground Surface	No Asbestos Detected
	DCA-SB-652WESTSIDE-FY	6/9/2020		3 to 6 Inches Below Ground Surface	No Asbestos Detected
	DCA-SF-652WESTSIDE-BY	6/9/2020	Back Yard	0 to 3 Inches Below Ground Surface	No Asbestos Detected
	DCA-SB-652WESTSIDE-BY	6/9/2020		3 to 6 Inches Below Ground Surface	No Asbestos Detected

**DAVIDSON COMMUNITY ASBESTOS REMOVAL SITE EVALUATION
DAVIDSON, MECKLENBURG COUNTY, NORTH CAROLINA
SAMPLE SUMMARY**

Street Address	Sample ID	Date Collected	Location Description	Depth Collected	Analytical Results
650 Westside Terrace	DCA-SF-650WESTSIDE-FY	6/9/2020	Front Yard	0 to 3 Inches Below Ground Surface	No Asbestos Detected
	DCA-SB-650WESTSIDE-FY	6/9/2020		3 to 6 Inches Below Ground Surface	No Asbestos Detected
	DCA-SF-650WESTSIDE-BY	6/9/2020	Back Yard	0 to 3 Inches Below Ground Surface	No Asbestos Detected
	DCA-SB-650WESTSIDE-BY	6/9/2020		3 to 6 Inches Below Ground Surface	No Asbestos Detected
523 Cardinal Court	DCA-SF-523CARDINAL-FY	6/9/2020	Front Yard	0 to 3 Inches Below Ground Surface	No Asbestos Detected
	DCA-SB-523CARDINAL-FY	6/9/2020		3 to 6 Inches Below Ground Surface	No Asbestos Detected
	DCA-SF-523CARDINAL-BY	6/9/2020	Back Yard	0 to 3 Inches Below Ground Surface	No Asbestos Detected
	DCA-SB-523CARDINAL-BY	6/9/2020		3 to 6 Inches Below Ground Surface	No Asbestos Detected
655 Westside Terrace	DCA-SF-655WESTSIDE-FY	6/9/2020	Front Yard	0 to 3 Inches Below Ground Surface	No Asbestos Detected
	DCA-SB-655WESTSIDE-FY	6/9/2020		3 to 6 Inches Below Ground Surface	No Asbestos Detected
	DCA-SF-655WESTSIDE-BY	6/9/2020	Back Yard	0 to 3 Inches Below Ground Surface	No Asbestos Detected
	DCA-SB-655WESTSIDE-BY	6/9/2020		3 to 6 Inches Below Ground Surface	No Asbestos Detected
513 Westside Terrace	DCA-SF-513WESTSIDE-FY	6/9/2020	Front Yard	0 to 3 Inches Below Ground Surface	No Asbestos Detected
	DCA-SB-513WESTSIDE-FY	6/9/2020		3 to 6 Inches Below Ground Surface	No Asbestos Detected
	DCA-SF-513WESTSIDE-BY	6/9/2020	Back Yard	0 to 3 Inches Below Ground Surface	No Asbestos Detected
	DCA-SB-513WESTSIDE-BY	6/9/2020		3 to 6 Inches Below Ground Surface	No Asbestos Detected
	DCA-SF-513WESTSIDE-GRDN	6/9/2020	Garden Surrounding House	0 to 3 Inches Below Ground Surface	No Asbestos Detected
	DCA-SB-513WESTSIDE-GRDN	6/9/2020		3 to 6 Inches Below Ground Surface	No Asbestos Detected
519 Westside Terrace	DCA-SF-519WESTSIDE-FY	6/9/2020	Front Yard	0 to 3 Inches Below Ground Surface	No Asbestos Detected
	DCA-SB-519WESTSIDE-FY	6/9/2020		3 to 6 Inches Below Ground Surface	No Asbestos Detected
	DCA-SF-519WESTSIDE-BY	6/9/2020	Back Yard	0 to 3 Inches Below Ground Surface	No Asbestos Detected
	DCA-SB-519WESTSIDE-BY	6/9/2020		3 to 6 Inches Below Ground Surface	No Asbestos Detected
302 Potts Street	DCA-SF-302POTTS	6/9/2020	Along Potts Street	0 to 3 Inches Below Ground Surface	No Asbestos Detected
	DCA-SB-302POTTS	6/9/2020		3 to 6 Inches Below Ground Surface	No Asbestos Detected
303 Potts Street	DCA-SF-303POTTS-FY	6/9/2020	Front Yard	0 to 3 Inches Below Ground Surface	No Asbestos Detected
	DCA-SB-303POTTS-FY	6/9/2020		3 to 6 Inches Below Ground Surface	No Asbestos Detected
	DCA-SF-303POTTS-LSY	6/9/2020	Left Side Yard	0 to 3 Inches Below Ground Surface	No Asbestos Detected
	DCA-SB-303POTTS-LSY	6/9/2020		3 to 6 Inches Below Ground Surface	No Asbestos Detected
	DCA-SF-303POTTS-BY	6/9/2020	Back Yard	0 to 3 Inches Below Ground Surface	No Asbestos Detected
	DCA-SB-303POTTS-BY	6/9/2020		3 to 6 Inches Below Ground Surface	No Asbestos Detected
115 Potts Street	DCA-SF-115POTTS-FY	6/9/2020	Front Yard	0 to 3 Inches Below Ground Surface	No Asbestos Detected
	DCA-SB-115POTTS-FY	6/9/2020		3 to 6 Inches Below Ground Surface	No Asbestos Detected
	DCA-SF-115POTTS-BY	6/9/2020	Back Yard	0 to 3 Inches Below Ground Surface	No Asbestos Detected
	DCA-SB-115POTTS-BY	6/9/2020		3 to 6 Inches Below Ground Surface	No Asbestos Detected
206 Potts Street	DCA-SF-206POTTS-RSY	6/10/2020	Right Side Yard	0 to 3 Inches Below Ground Surface	No Asbestos Detected
	DCA-SB-206POTTS-RSY	6/10/2020		3 to 6 Inches Below Ground Surface	No Asbestos Detected
151 Walnut Street	DCA-SF-151WALNUT-FY	6/10/2020	Front Yard	0 to 3 Inches Below Ground Surface	No Asbestos Detected
	DCA-SB-151WALNUT-FY	6/10/2020		3 to 6 Inches Below Ground Surface	No Asbestos Detected
	DCA-SF-151WALNUT-BY	6/10/2020	Back Yard	0 to 3 Inches Below Ground Surface	No Asbestos Detected
	DCA-SB-151WALNUT-BY	6/10/2020		3 to 6 Inches Below Ground Surface	No Asbestos Detected
	DCA-SF-151WALNUT-GAMBLE	6/10/2020	Along Gamble Street	0 to 3 Inches Below Ground Surface	No Asbestos Detected
	DCA-SB-151WALNUT-GAMBLE	6/10/2020		3 to 6 Inches Below Ground Surface	No Asbestos Detected

**DAVIDSON COMMUNITY ASBESTOS REMOVAL SITE EVALUATION
DAVIDSON, MECKLENBURG COUNTY, NORTH CAROLINA
SAMPLE SUMMARY**

Street Address	Sample ID	Date Collected	Location Description	Depth Collected	Analytical Results
Ada Jenkins Center	DCA-SF-AJC-BEDS	6/10/2020	Raised Garden Area Along Gamble Street	0 to 3 Inches Below Ground Surface	No Asbestos Detected
	DCA-SB-AJC-BEDS	6/10/2020		3 to 6 Inches Below Ground Surface	No Asbestos Detected
	DCA-SBD1-AJC-BEDS	6/10/2020		6 to 12 Inches Below Ground Surface	No Asbestos Detected
201 Gamble Street	DCA-SF-201GAMBLE-FY	6/10/2020	Portion of Yard Facing Gamble Street/Crane Street	0 to 3 Inches Below Ground Surface	No Asbestos Detected
	DCA-SB-201GAMBLE-FY	6/10/2020		3 to 6 Inches Below Ground Surface	No Asbestos Detected
	DCA-SF-201GAMBLE-BY	6/10/2020	Northeast Portion of Parcel, Along Sloan Street	0 to 3 Inches Below Ground Surface	No Asbestos Detected
	DCA-SB-201GAMBLE-BY	6/10/2020		3 to 6 Inches Below Ground Surface	No Asbestos Detected
133 Mock Circle	DCA-SF-133MOCKC-FY	6/10/2020	Front Yard	0 to 3 Inches Below Ground Surface	No Asbestos Detected
	DCA-SB-133MOCKC-FY	6/10/2020		3 to 6 Inches Below Ground Surface	No Asbestos Detected
	DCA-SF-133MOCKC-BY	6/10/2020	Back Yard	0 to 3 Inches Below Ground Surface	No Asbestos Detected
	DCA-SB-133MOCKC-BY	6/10/2020		3 to 6 Inches Below Ground Surface	No Asbestos Detected
129 Mock Circle	DCA-SF-129MOCKC-FY	6/10/2020	Front Yard	0 to 3 Inches Below Ground Surface	No Asbestos Detected
	DCA-SB-129MOCKC-FY	6/10/2020		3 to 6 Inches Below Ground Surface	No Asbestos Detected
	DCA-SF-129MOCKC-BY	6/10/2020	Back Yard	0 to 3 Inches Below Ground Surface	No Asbestos Detected
	DCA-SB-129MOCKC-BY	6/10/2020		3 to 6 Inches Below Ground Surface	No Asbestos Detected
145 Mock Road	DCA-SF-145MOCKR-FY	6/10/2020	Front Yard	0 to 3 Inches Below Ground Surface	No Asbestos Detected
	DCA-SB-145MOCKR-FY	6/10/2020		3 to 6 Inches Below Ground Surface	No Asbestos Detected
	DCA-SF-145MOCKR-BY	6/10/2020	Back Yard	0 to 3 Inches Below Ground Surface	No Asbestos Detected
	DCA-SB-145MOCKR-BY	6/10/2020		3 to 6 Inches Below Ground Surface	No Asbestos Detected
153 Mock Road	DCA-SF-153MOCKR-FY	6/10/2020	Front Yard	0 to 3 Inches Below Ground Surface	Less than 0.25% Asbestos (Less than 96,170 s/g, PCMe)
	DCA-SB-153MOCKR-FY	6/10/2020		3 to 6 Inches Below Ground Surface	No Asbestos Detected
	DCA-SF-153MOCKR-BY	6/10/2020	Back Yard	0 to 3 Inches Below Ground Surface	No Asbestos Detected
	DCA-SB-153MOCKR-BY	6/10/2020		3 to 6 Inches Below Ground Surface	No Asbestos Detected
159 Mock Road	DCA-SF-159MOCKR-FY	6/10/2020	Front Yard	0 to 3 Inches Below Ground Surface	No Asbestos Detected
	DCA-SB-159MOCKR-FY	6/10/2020		3 to 6 Inches Below Ground Surface	No Asbestos Detected
	DCA-SF-159MOCKR-BY	6/10/2020	Back Yard	0 to 3 Inches Below Ground Surface	0.25% Asbestos
	DCA-SB-159MOCKR-BY	6/10/2020		3 to 6 Inches Below Ground Surface	0.75% Asbestos
207 Mock Road	DCA-SF-207MOCKR-FY	6/10/2020	Front Yard	0 to 3 Inches Below Ground Surface	No Asbestos Detected
	DCA-SB-207MOCKR-FY	6/10/2020		3 to 6 Inches Below Ground Surface	0.25% Asbestos
	DCA-SF-207MOCKR-BY	6/10/2020	Back Yard	0 to 3 Inches Below Ground Surface	No Asbestos Detected
	DCA-SB-207MOCKR-BY	6/10/2020		3 to 6 Inches Below Ground Surface	No Asbestos Detected
204 Mock Road	DCA-SF-204MOCKR	6/10/2020	Across Parcel	0 to 3 Inches Below Ground Surface	No Asbestos Detected
	DCA-SB-204MOCKR	6/10/2020		3 to 6 Inches Below Ground Surface	No Asbestos Detected
Mock Road Cul-de-Sac	DCA-SF-MOCKRCDS	6/10/2020	Parcel On South Side of Cul-de-Sac	0 to 3 Inches Below Ground Surface	No Asbestos Detected
	DCA-SB-MOCKRCDS	6/10/2020		3 to 6 Inches Below Ground Surface	No Asbestos Detected
Greenway, Mock Rd Cul-de-Sac to Westside Terrace	DCA-SF-PARKWESTSIDE-NORTH	6/10/2020	Northern Half of Parcel	0 to 3 Inches Below Ground Surface	No Asbestos Detected
	DCA-SB-PARKWESTSIDE-NORTH	6/10/2020		3 to 6 Inches Below Ground Surface	No Asbestos Detected
	DCA-SF-PARKWESTSIDE-SOUTH	6/10/2020	Southern Half of Parcel	0 to 3 Inches Below Ground Surface	No Asbestos Detected
	DCA-SB-PARKWESTSIDE-SOUTH	6/10/2020		3 to 6 Inches Below Ground Surface	No Asbestos Detected
Park Parcel, wrapped around 222 Mock Road	DCA-SF-PARKLAKWEST	6/10/2020	Portion of Park Parcel Adjacent to 222 Mock Road	0 to 3 Inches Below Ground Surface	No Asbestos Detected
	DCA-SB-PARKLAKWEST	6/10/2020		3 to 6 Inches Below Ground Surface	No Asbestos Detected

**DAVIDSON COMMUNITY ASBESTOS REMOVAL SITE EVALUATION
DAVIDSON, MECKLENBURG COUNTY, NORTH CAROLINA
SAMPLE SUMMARY**

Street Address	Sample ID	Date Collected	Location Description	Depth Collected	Analytical Results
Park Parcel, behind 214 and 218 Mock Road	DCA-SF-PARKWESTCENTRAL-NW	6/10/2020	Northwest Portion	0 to 3 Inches Below Ground Surface	No Asbestos Detected
	DCA-SB-PARKWESTCENTRAL-NW	6/10/2020		3 to 6 Inches Below Ground Surface	No Asbestos Detected
	DCA-SF-PARKWESTCENTRAL-SE	6/10/2020	Southeast Portion	0 to 3 Inches Below Ground Surface	No Asbestos Detected
	DCA-SB-PARKWESTCENTRAL-SE	6/10/2020		3 to 6 Inches Below Ground Surface	Less than 0.25% Asbestos (Less than 96,170 s/g, PCMe)
302 Houston Street	DCA-SF-302HOUSTON-FY	6/10/2020	Front Yard	0 to 3 Inches Below Ground Surface	No Asbestos Detected
	DCA-SB-302HOUSTON-FY	6/10/2020		3 to 6 Inches Below Ground Surface	No Asbestos Detected
Roosevelt Park, along Griffith Street	DCA-SF-PARKGRIFFITH-WEST	6/10/2020	Western Portion	0 to 3 Inches Below Ground Surface	No Asbestos Detected
	DCA-SB-PARKGRIFFITH-WEST	6/10/2020		3 to 6 Inches Below Ground Surface	No Asbestos Detected
	DCA-SF-PARKGRIFFITH-EAST	6/10/2020	Eastern Portion	0 to 3 Inches Below Ground Surface	No Asbestos Detected
	DCA-SB-PARKGRIFFITH-EAST	6/10/2020		3 to 6 Inches Below Ground Surface	No Asbestos Detected
341 Sloan Street	DCA-SF-341SLOAN	6/10/2020	Whole Parcel	0 to 3 Inches Below Ground Surface	No Asbestos Detected
	DCA-SB-341SLOAN	6/10/2020		3 to 6 Inches Below Ground Surface	No Asbestos Detected
304 Main Street	DCA-SF-304MAIN-BY	6/23/2020	Back Yard	0 to 3 Inches Below Ground Surface	No Asbestos Detected
	DCA-SB-304MAIN-BY	6/23/2020		3 to 6 Inches Below Ground Surface	No Asbestos Detected
	DCA-SF-304MAIN-RSY	6/23/2020	Right Side Yard	0 to 3 Inches Below Ground Surface	No Asbestos Detected
	DCA-SB-304MAIN-RSY	6/23/2020		3 to 6 Inches Below Ground Surface	No Asbestos Detected
	DCA-SF-304MAIN-LSY	6/23/2020	Left Side Yard	0 to 3 Inches Below Ground Surface	No Asbestos Detected
	DCA-SB-304MAIN-LSY	6/23/2020		3 to 6 Inches Below Ground Surface	No Asbestos Detected
131 Potts Street	DCA-SF-131POTTS-FY	6/23/2020	Front Yard	0 to 3 Inches Below Ground Surface	No Asbestos Detected
	DCA-SB-131POTTS-FY	6/23/2020		3 to 6 Inches Below Ground Surface	No Asbestos Detected
	DCA-SF-131POTTS-BY	6/23/2020	Back Yard	0 to 3 Inches Below Ground Surface	No Asbestos Detected
	DCA-SB-131POTTS-BY	6/23/2020		3 to 6 Inches Below Ground Surface	No Asbestos Detected
416 Brandon Street	DCA-SF-416BRANDON-FY	6/23/2020	Front Yard	0 to 3 Inches Below Ground Surface	Less than 0.25% Asbestos (195,701 s/g PCMe)
	DCA-SB-416BRANDON-FY	6/23/2020		3 to 6 Inches Below Ground Surface	Less than 0.25% Asbestos (Less than 97,524 s/g PCMe)
	DCA-SF-416BRANDON-BY	6/23/2020	Back Yard	0 to 3 Inches Below Ground Surface	Less than 0.25% Asbestos (Less than 97,524 s/g PCMe)
	DCA-SB-416BRANDON-BY	6/23/2020		3 to 6 Inches Below Ground Surface	No Asbestos Detected
414 Brandon Street	DCA-SF-414BRANDON	6/23/2020	Whole Parcel	0 to 3 Inches Below Ground Surface	No Asbestos Detected
	DCA-SB-414BRANDON	6/23/2020		3 to 6 Inches Below Ground Surface	No Asbestos Detected
535 Westside Terrace	DCA-SF-535WESTSIDE-FY	6/23/2020	Front Yard	0 to 3 Inches Below Ground Surface	No Asbestos Detected
	DCA-SB-535WESTSIDE-FY	6/23/2020		3 to 6 Inches Below Ground Surface	No Asbestos Detected
	DCA-SF-535WESTSIDE-BY	6/23/2020	Back Yard	0 to 3 Inches Below Ground Surface	No Asbestos Detected
	DCA-SB-535WESTSIDE-BY	6/23/2020		3 to 6 Inches Below Ground Surface	No Asbestos Detected
187 Park Drive	DCA-SF-187PARK-LSY	6/23/2020	Left Side Yard	0 to 3 Inches Below Ground Surface	No Asbestos Detected
	DCA-SB-187PARK-LSY	6/23/2020		3 to 6 Inches Below Ground Surface	No Asbestos Detected
	DCA-SF-187PARK-RSY	6/23/2020	Right Side Yard	0 to 3 Inches Below Ground Surface	No Asbestos Detected
	DCA-SB-187PARK-RSY	6/23/2020		3 to 6 Inches Below Ground Surface	No Asbestos Detected
636 Westside Terrace	DCA-SF-636WESTSIDE-FY	6/23/2020	Front Yard	0 to 3 Inches Below Ground Surface	No Asbestos Detected
	DCA-SB-636WESTSIDE-FY	6/23/2020		3 to 6 Inches Below Ground Surface	No Asbestos Detected
	DCA-SF-636WESTSIDE-BY	6/23/2020	Back Yard	0 to 3 Inches Below Ground Surface	No Asbestos Detected
	DCA-SB-636WESTSIDE-BY	6/23/2020		3 to 6 Inches Below Ground Surface	No Asbestos Detected
203 Mock Road	DCA-SF-203MOCKR-FY	6/23/2020	Front Yard	0 to 3 Inches Below Ground Surface	No Asbestos Detected
	DCA-SB-203MOCKR-FY	6/23/2020		3 to 6 Inches Below Ground Surface	No Asbestos Detected
	DCA-SF-203MOCKR-BY	6/23/2020	Back Yard	0 to 3 Inches Below Ground Surface	No Asbestos Detected
	DCA-SB-203MOCKR-BY	6/23/2020		3 to 6 Inches Below Ground Surface	No Asbestos Detected

**DAVIDSON COMMUNITY ASBESTOS REMOVAL SITE EVALUATION
DAVIDSON, MECKLENBURG COUNTY, NORTH CAROLINA
SAMPLE SUMMARY**

Street Address	Sample ID	Date Collected	Location Description	Depth Collected	Analytical Results
638 Westside Terrace	DCA-SF-638WESTSIDE-FY	6/23/2020	Front Yard	0 to 3 Inches Below Ground Surface	No Asbestos Detected
	DCA-SB-638WESTSIDE-FY	6/23/2020		3 to 6 Inches Below Ground Surface	No Asbestos Detected
	DCA-SF-638WESTSIDE-BY	6/23/2020	Back Yard	0 to 3 Inches Below Ground Surface	No Asbestos Detected
	DCA-SB-638WESTSIDE-BY	6/23/2020		3 to 6 Inches Below Ground Surface	No Asbestos Detected
640 Westside Terrace	DCA-SF-640WESTSIDE-FY	6/23/2020	Front Yard	0 to 3 Inches Below Ground Surface	No Asbestos Detected
	DCA-SB-640WESTSIDE-FY	6/23/2020		3 to 6 Inches Below Ground Surface	No Asbestos Detected
	DCA-SF-640WESTSIDE-BY	6/23/2020	Back Yard	0 to 3 Inches Below Ground Surface	No Asbestos Detected
	DCA-SB-640WESTSIDE-BY	6/23/2020		3 to 6 Inches Below Ground Surface	No Asbestos Detected
219 Crane Street	DCA-SF-219CRANE-FY	6/23/2020	Front Yard	0 to 3 Inches Below Ground Surface	0.50% Asbestos
	DCA-SB-219CRANE-FY	6/23/2020		3 to 6 Inches Below Ground Surface	No Asbestos Detected
	DCA-SF-219CRANE-BY	6/23/2020	Back Yard	0 to 3 Inches Below Ground Surface	No Asbestos Detected
	DCA-SB-219CRANE-BY	6/23/2020		3 to 6 Inches Below Ground Surface	No Asbestos Detected
260 Main Street	DCA-SF-260MAIN-FY	6/23/2020	Front Yard	0 to 3 Inches Below Ground Surface	No Asbestos Detected
	DCA-SB-260MAIN-FY	6/23/2020		3 to 6 Inches Below Ground Surface	No Asbestos Detected
	DCA-SF-260MAIN-BY	6/23/2020	Back Yard	0 to 3 Inches Below Ground Surface	No Asbestos Detected
	DCA-SB-260MAIN-BY	6/23/2020		3 to 6 Inches Below Ground Surface	No Asbestos Detected
Houston Street ROW	DCA-SF-HOUSTONROW	6/23/2020	ROW, Both Sides of Road	0 to 3 Inches Below Ground Surface	No Asbestos Detected
	DCA-SB-HOUSTONROW	6/23/2020		3 to 6 Inches Below Ground Surface	No Asbestos Detected
648 Westside Terrace	DCA-SF-648WESTSIDE-FY	8/4/2020	Front Yard	0 to 3 Inches Below Ground Surface	No Asbestos Detected
	DCA-SB-648WESTSIDE-FY	8/4/2020		3 to 6 Inches Below Ground Surface	No Asbestos Detected
	DCA-SF-648WESTSIDE-BY	8/4/2020	Back Yard	0 to 3 Inches Below Ground Surface	No Asbestos Detected
	DCA-SB-648WESTSIDE-BY	8/4/2020		3 to 6 Inches Below Ground Surface	No Asbestos Detected
503 Cardinal Court	DCA-SF-503CARDINAL-FY	8/4/2020	Front Yard	0 to 3 Inches Below Ground Surface	No Asbestos Detected
	DCA-SB-503CARDINAL-FY	8/4/2020		3 to 6 Inches Below Ground Surface	No Asbestos Detected
	DCA-SF-503CARDINAL-BY	8/4/2020	Back Yard	0 to 3 Inches Below Ground Surface	No Asbestos Detected
	DCA-SB-503CARDINAL-BY	8/4/2020		3 to 6 Inches Below Ground Surface	No Asbestos Detected
302 Jetton Street	DCA-SF-302JETTON-FY	8/4/2020	Front Yard	0 to 3 Inches Below Ground Surface	No Asbestos Detected
	DCA-SB-302JETTON-FY	8/4/2020		3 to 6 Inches Below Ground Surface	No Asbestos Detected
	DCA-SF-302JETTON-BY	8/4/2020	Back Yard	0 to 3 Inches Below Ground Surface	No Asbestos Detected
	DCA-SB-302JETTON-BY	8/4/2020		3 to 6 Inches Below Ground Surface	No Asbestos Detected
302 Lakeside Avenue	DCA-SF-302LAKESIDE-FY	8/4/2020	Front Yard	0 to 3 Inches Below Ground Surface	No Asbestos Detected
	DCA-SB-302LAKESIDE-FY	8/4/2020		3 to 6 Inches Below Ground Surface	No Asbestos Detected
	DCA-SF-302LAKESIDE-BY	8/4/2020	Back Yard	0 to 3 Inches Below Ground Surface	No Asbestos Detected
	DCA-SB-302LAKESIDE-BY	8/4/2020		3 to 6 Inches Below Ground Surface	No Asbestos Detected
241 Lakeside Avenue	DCA-SF-241LAKESIDE-FY	8/4/2020	Front Yard	0 to 3 Inches Below Ground Surface	No Asbestos Detected
	DCA-SB-241LAKESIDE-FY	8/4/2020		3 to 6 Inches Below Ground Surface	No Asbestos Detected
	DCA-SF-241LAKESIDE-RSY	8/4/2020	Right Side Yard	0 to 3 Inches Below Ground Surface	No Asbestos Detected
	DCA-SB-241LAKESIDE-RSY	8/4/2020		3 to 6 Inches Below Ground Surface	No Asbestos Detected
234 Lakeside Avenue	DCA-SF-234LAKESIDE-FY	8/4/2020	Front Yard	0 to 3 Inches Below Ground Surface	No Asbestos Detected
	DCA-SB-234LAKESIDE-FY	8/4/2020		3 to 6 Inches Below Ground Surface	No Asbestos Detected
	DCA-SF-234LAKESIDE-BY	8/4/2020	Back Yard	0 to 3 Inches Below Ground Surface	No Asbestos Detected
	DCA-SB-234LAKESIDE-BY	8/4/2020		3 to 6 Inches Below Ground Surface	No Asbestos Detected

**DAVIDSON COMMUNITY ASBESTOS REMOVAL SITE EVALUATION
DAVIDSON, MECKLENBURG COUNTY, NORTH CAROLINA
SAMPLE SUMMARY**

Street Address	Sample ID	Date Collected	Location Description	Depth Collected	Analytical Results
226 Lakeside Avenue	DCA-SF-226LAKESIDE-FY	8/4/2020	Front Yard	0 to 3 Inches Below Ground Surface	No Asbestos Detected
	DCA-SB-226LAKESIDE-FY	8/4/2020		3 to 6 Inches Below Ground Surface	No Asbestos Detected
	DCA-SF-226LAKESIDE-BY	8/4/2020	Back Yard	0 to 3 Inches Below Ground Surface	No Asbestos Detected
	DCA-SB-226LAKESIDE-BY	8/4/2020		3 to 6 Inches Below Ground Surface	No Asbestos Detected
411 Westside Terrace	DCA-SF-411WESTSIDE	8/4/2020	Whole Parcel	0 to 3 Inches Below Ground Surface	No Asbestos Detected
	DCA-SB-441WESTSIDE	8/4/2020		3 to 6 Inches Below Ground Surface	No Asbestos Detected
Roosevelt Wilson Park Playground Area	DCA-SF-RWP-A	8/4/2020	Southeastern Extent of Playground	0 to 3 Inches Below Ground Surface	No Asbestos Detected
	DCA-SB-RWP-A	8/4/2020		3 to 6 Inches Below Ground Surface	No Asbestos Detected
	DCA-SF-RWP-B	8/4/2020	Around PARK-15 and PARK-24	0 to 3 Inches Below Ground Surface	No Asbestos Detected
	DCA-SB-RWP-B	8/4/2020		3 to 6 Inches Below Ground Surface	No Asbestos Detected
	DCA-SF-RWP-C	8/4/2020	Southern Extent of Playground, West of Sidewalk	0 to 3 Inches Below Ground Surface	No Asbestos Detected
	DCA-SB-RWP-C	8/4/2020		3 to 6 Inches Below Ground Surface	No Asbestos Detected
	DCA-SF-RWP-D	8/4/2020	Western Extent; Central	0 to 3 Inches Below Ground Surface	No Asbestos Detected
	DCA-SB-RWP-D	8/4/2020		3 to 6 Inches Below Ground Surface	No Asbestos Detected
	DCA-SF-RWP-E	8/4/2020	Northwest of Main Playground Area	0 to 3 Inches Below Ground Surface	No Asbestos Detected
	DCA-SB-RWP-E	8/4/2020		3 to 6 Inches Below Ground Surface	No Asbestos Detected
	DCA-SF-RWP-F	8/4/2020	Around Main Playground Area	0 to 3 Inches Below Ground Surface	Less than 0.25% Asbestos (Less than 98,505 μ g PCMe)
	DCA-SB-RWP-F	8/4/2020		3 to 6 Inches Below Ground Surface	No Asbestos Detected
	DCA-SF-RWP-G	8/4/2020	Mulch Immediately Surrounding Main Playground	0 to 3 Inches Below Ground Surface	No Asbestos Detected
	DCA-SB-RWP-G	8/4/2020		3 to 6 Inches Below Ground Surface	No Asbestos Detected
	DCA-SF-RWP-H	8/4/2020	East of Main Playground	0 to 3 Inches Below Ground Surface	No Asbestos Detected
	DCA-SB-RWP-H	8/4/2020		3 to 6 Inches Below Ground Surface	No Asbestos Detected
	DCA-SF-RWP-I	8/4/2020	Restroom Area	0 to 3 Inches Below Ground Surface	No Asbestos Detected
	DCA-SB-RWP-I	8/4/2020		3 to 6 Inches Below Ground Surface	No Asbestos Detected
	DCA-SF-RWP-J	8/4/2020	North of Main Playground Area	0 to 3 Inches Below Ground Surface	No Asbestos Detected
	DCA-SB-RWP-J	8/4/2020		3 to 6 Inches Below Ground Surface	No Asbestos Detected
DCA-SF-RWP-K	8/4/2020	Northern Extent, Central	0 to 3 Inches Below Ground Surface	0.25% Asbestos	
DCA-SB-RWP-K	8/4/2020		3 to 6 Inches Below Ground Surface	No Asbestos Detected	
DCA-SF-RWP-L	8/4/2020	Northwestern Extent of Playground Area	0 to 3 Inches Below Ground Surface	No Asbestos Detected	
DCA-SB-RWP-L	8/4/2020		3 to 6 Inches Below Ground Surface	No Asbestos Detected	
DCA-SF-RWP-M	8/4/2020	Northeastern Extent of Playground Area	0 to 3 Inches Below Ground Surface	No Asbestos Detected	
DCA-SB-RWP-M	8/4/2020		3 to 6 Inches Below Ground Surface	No Asbestos Detected	
215 Mock Road	DCA-SF-215MOCKR-FY	8/4/2020	Front Yard	0 to 3 Inches Below Ground Surface	No Asbestos Detected
	DCA-SB-215MOCKR-FY	8/4/2020		3 to 6 Inches Below Ground Surface	No Asbestos Detected
	DCA-SF-215MOCKR-BY	8/4/2020	Back Yard	0 to 3 Inches Below Ground Surface	No Asbestos Detected
	DCA-SB-215MOCKR-BY	8/4/2020		3 to 6 Inches Below Ground Surface	No Asbestos Detected
211 Mock Road	DCA-SF-211MOCKR-FY	8/4/2020	Front Yard	0 to 3 Inches Below Ground Surface	No Asbestos Detected
	DCA-SB-211MOCKR-FY	8/4/2020		3 to 6 Inches Below Ground Surface	No Asbestos Detected
	DCA-SF-211MOCKR-BY	8/4/2020	Back Yard	0 to 3 Inches Below Ground Surface	No Asbestos Detected
	DCA-SB-211MOCKR-BY	8/4/2020		3 to 6 Inches Below Ground Surface	No Asbestos Detected

**DAVIDSON COMMUNITY ASBESTOS REMOVAL SITE EVALUATION
DAVIDSON, MECKLENBURG COUNTY, NORTH CAROLINA
SAMPLE SUMMARY**

Street Address	Sample ID	Date Collected	Location Description	Depth Collected	Analytical Results
210 Mock Road	DCA-SF-210MOCKR-FY	8/4/2020	Front Yard	0 to 3 Inches Below Ground Surface	No Asbestos Detected
	DCA-SB-210MOCKR-FY	8/4/2020		3 to 6 Inches Below Ground Surface	No Asbestos Detected
	DCA-SF-210MOCKR-BY	8/4/2020	Back Yard	0 to 3 Inches Below Ground Surface	No Asbestos Detected
	DCA-SB-210MOCKR-BY	8/4/2020		3 to 6 Inches Below Ground Surface	No Asbestos Detected
Gracian Investments Parcel Behind Mock Road	DCA-SF-MOCKR-ISLAND	8/4/2020	Front Yard	0 to 3 Inches Below Ground Surface	No Asbestos Detected
	DCA-SB-MOCKR-ISLAND	8/4/2020		3 to 6 Inches Below Ground Surface	No Asbestos Detected
514 Cardinal Court	DCA-SF-514CARDINAL-FY	8/4/2020	Front Yard	0 to 3 Inches Below Ground Surface	Less than 0.25% Asbestos (Less than 98,498 s/g PCMe)
	DCA-SB-514CARDINAL-FY	8/4/2020		3 to 6 Inches Below Ground Surface	No Asbestos Detected
	DCA-SF-514CARDINAL-BY	8/4/2020	Back Yard	0 to 3 Inches Below Ground Surface	No Asbestos Detected
	DCA-SB-514CARDINAL-BY	8/4/2020		3 to 6 Inches Below Ground Surface	No Asbestos Detected
612 Westside Terrace	DCA-SF-612WESTSIDE-FY	8/4/2020	Front Yard	0 to 3 Inches Below Ground Surface	No Asbestos Detected
	DCA-SB-612WESTSIDE-FY	8/4/2020		3 to 6 Inches Below Ground Surface	No Asbestos Detected
	DCA-SF-612WESTSIDE-BY	8/4/2020	Back Yard	0 to 3 Inches Below Ground Surface	No Asbestos Detected
	DCA-SB-612WESTSIDE-BY	8/4/2020		3 to 6 Inches Below Ground Surface	No Asbestos Detected
118 Mock Road	DCA-SF-118MOCKR-FY	8/4/2020	Front Yard	0 to 3 Inches Below Ground Surface	No Asbestos Detected
	DCA-SB-118MOCKR-FY	8/4/2020		3 to 6 Inches Below Ground Surface	No Asbestos Detected
	DCA-SF-118MOCKR-BY	8/4/2020	Back Yard	0 to 3 Inches Below Ground Surface	No Asbestos Detected
	DCA-SB-118MOCKR-BY	8/4/2020		3 to 6 Inches Below Ground Surface	No Asbestos Detected
	DCA-BM-118MOCKR	8/4/2020	Driveway Behind Pizza Shop	Ground Surface	No Asbestos Detected
114 Lake Davidson Court	DCA-SF-114LAKEDAVIDSON-FY	8/5/2020	Front Yard	0 to 3 Inches Below Ground Surface	No Asbestos Detected
	DCA-SB-114LAKEDAVIDSON-FY	8/5/2020		3 to 6 Inches Below Ground Surface	No Asbestos Detected
	DCA-SF-114LAKEDAVIDSON-BY	8/5/2020	Back Yard	0 to 3 Inches Below Ground Surface	No Asbestos Detected
	DCA-SB-114LAKEDAVIDSON-BY	8/5/2020		3 to 6 Inches Below Ground Surface	No Asbestos Detected
121 Mock Circle	DCA-SF-121MOCKC-FY	8/5/2020	Front Yard	0 to 3 Inches Below Ground Surface	No Asbestos Detected
	DCA-SB-121MOCKC-FY	8/5/2020		3 to 6 Inches Below Ground Surface	No Asbestos Detected
	DCA-SF-121MOCKC-BY	8/5/2020	Back Yard	0 to 3 Inches Below Ground Surface	No Asbestos Detected
	DCA-SB-121MOCKC-BY	8/5/2020		3 to 6 Inches Below Ground Surface	No Asbestos Detected
140 Mock Circle	DCA-SF-140MOCKC-FY	8/5/2020	Front Yard	0 to 3 Inches Below Ground Surface	No Asbestos Detected
	DCA-SB-140MOCKC-FY	8/5/2020		3 to 6 Inches Below Ground Surface	Less than 0.25% Asbestos (Less than 98,515 s/g PCMe)
	DCA-SF-140MOCKC-BY	8/5/2020	Back Yard	0 to 3 Inches Below Ground Surface	No Asbestos Detected
	DCA-SB-140MOCKC-BY	8/5/2020		3 to 6 Inches Below Ground Surface	No Asbestos Detected
152 Mock Road	DCA-SF-152MOCKR-FY	8/5/2020	Front Yard	0 to 3 Inches Below Ground Surface	No Asbestos Detected
	DCA-SB-152MOCKR-FY	8/5/2020		3 to 6 Inches Below Ground Surface	No Asbestos Detected
	DCA-SF-152MOCKR-BY	8/5/2020	Back Yard	0 to 3 Inches Below Ground Surface	No Asbestos Detected
	DCA-SB-152MOCKR-BY	8/5/2020		3 to 6 Inches Below Ground Surface	No Asbestos Detected
223 Crane Street	DCA-SF-223CRANE-FY	8/5/2020	Front Yard	0 to 3 Inches Below Ground Surface	No Asbestos Detected
	DCA-SB-223CRANE-FY	8/5/2020		3 to 6 Inches Below Ground Surface	No Asbestos Detected
	DCA-SF-223CRANE-BY	8/5/2020	Back Yard	0 to 3 Inches Below Ground Surface	No Asbestos Detected
	DCA-SB-223CRANE-BY	8/5/2020		3 to 6 Inches Below Ground Surface	No Asbestos Detected
128 Potts Street	DCA-SF-128POTTS-FY	8/5/2020	Front Yard	0 to 3 Inches Below Ground Surface	No Asbestos Detected
	DCA-SB-128POTTS-FY	8/5/2020		3 to 6 Inches Below Ground Surface	No Asbestos Detected
	DCA-SF-128POTTS-BY	8/5/2020	Back Yard	0 to 3 Inches Below Ground Surface	No Asbestos Detected
	DCA-SB-128POTTS-BY	8/5/2020		3 to 6 Inches Below Ground Surface	No Asbestos Detected

**DAVIDSON COMMUNITY ASBESTOS REMOVAL SITE EVALUATION
DAVIDSON, MECKLENBURG COUNTY, NORTH CAROLINA
SAMPLE SUMMARY**

Street Address	Sample ID	Date Collected	Location Description	Depth Collected	Analytical Results
235 Crane Street	DCA-SF-235CRANE-FY	8/5/2020	Front Yard	0 to 3 Inches Below Ground Surface	0.25% Asbestos
	DCA-SB-235CRANE-FY	8/5/2020		3 to 6 Inches Below Ground Surface	Less than 0.25% Asbestos (Less than 98,529 s/g PCMe)
	DCA-SF-235CRANE-BY	8/5/2020	Back Yard	0 to 3 Inches Below Ground Surface	No Asbestos Detected
	DCA-SB-235CRANE-BY	8/5/2020		3 to 6 Inches Below Ground Surface	No Asbestos Detected
110 Mallard Court	DCA-SF-110MALLARD-FY	8/5/2020	Front Yard	0 to 3 Inches Below Ground Surface	No Asbestos Detected
	DCA-SB-110MALLARD-FY	8/5/2020		3 to 6 Inches Below Ground Surface	No Asbestos Detected
	DCA-SF-110MALLARD-BY	8/5/2020	Back Yard	0 to 3 Inches Below Ground Surface	No Asbestos Detected
	DCA-SB-110MALLARD-BY	8/5/2020		3 to 6 Inches Below Ground Surface	No Asbestos Detected
412 Brandon Street	DCA-SF-412BRANDON	8/5/2020	Entire Lot	0 to 3 Inches Below Ground Surface	No Asbestos Detected
	DCA-SB-412BRANDON	8/5/2020		3 to 6 Inches Below Ground Surface	No Asbestos Detected
Potts Street ROW	DCA-SF-120POTTS-ROW	8/5/2020	120 Potts Street Right of Way	0 to 3 Inches Below Ground Surface	No Asbestos Detected
	DCA-SB-120POTTS-ROW	8/5/2020		3 to 6 Inches Below Ground Surface	No Asbestos Detected
Sloan Street ROW	DCA-SF-SLOANS-ROW	8/5/2020	West Side of Sloan Street, Southern Portion of Metrolina Parcel	0 to 3 Inches Below Ground Surface	No Asbestos Detected
	DCA-SB-SLOANS-ROW	8/5/2020		3 to 6 Inches Below Ground Surface	No Asbestos Detected
	DCA-SF-SLOANN-ROW	8/5/2020	West Side of Sloan Street, Northern Portion of Metrolina Parcel	0 to 3 Inches Below Ground Surface	No Asbestos Detected
	DCA-SB-SLOANN-ROW	8/5/2020		3 to 6 Inches Below Ground Surface	No Asbestos Detected
	DCA-SF-329SLOAN-ROW	8/5/2020	329 Sloan Street ROW	0 to 3 Inches Below Ground Surface	No Asbestos Detected
	DCA-SB-329SLOAN-ROW	8/5/2020		3 to 6 Inches Below Ground Surface	No Asbestos Detected
Griffith Street ROW	DCA-SF-RWP-ROW	8/5/2020	Northeastern Portion of RWP, along Griffith Street	0 to 3 Inches Below Ground Surface	No Asbestos Detected
	DCA-SB-RWP-ROW	8/5/2020		3 to 6 Inches Below Ground Surface	No Asbestos Detected
	DCA-SF-331GRIFFITH-ROW	8/5/2020	331 Griffith Street ROW	0 to 3 Inches Below Ground Surface	No Asbestos Detected
	DCA-SB-331GRIFFITH-ROW	8/5/2020		3 to 6 Inches Below Ground Surface	No Asbestos Detected
214 Crane Street	DCA-SF-214CRANE-FY	9/1/2020	Front Yard	0 to 3 Inches Below Ground Surface	No Asbestos Detected
	DCA-SB-214CRANE-FY	9/1/2020		3 to 6 Inches Below Ground Surface	Less than 0.25% Asbestos (Less than 98,389 s/g PCMe)
	DCA-SF-214CRANE-BY	9/1/2020	Back Yard	0 to 3 Inches Below Ground Surface	No Asbestos Detected
	DCA-SB-214CRANE-BY	9/1/2020		3 to 6 Inches Below Ground Surface	No Asbestos Detected
225 Crane Street	DCA-SF-225CRANE-FY	9/1/2020	Front Yard	0 to 3 Inches Below Ground Surface	No Asbestos Detected
	DCA-SB-225CRANE-FY	9/1/2020		3 to 6 Inches Below Ground Surface	No Asbestos Detected
	DCA-SF-225CRANE-BY	9/1/2020	Back Yard	0 to 3 Inches Below Ground Surface	No Asbestos Detected
	DCA-SB-225CRANE-BY	9/1/2020		3 to 6 Inches Below Ground Surface	No Asbestos Detected
445 Brandon Street	DCA-SF-445BRANDON	9/1/2020	Entire Lot	0 to 3 Inches Below Ground Surface	No Asbestos Detected
	DCA-SB-445BRANDON	9/1/2020		3 to 6 Inches Below Ground Surface	No Asbestos Detected
451 Brandon Street	DCA-SF-451BRANDON	9/1/2020	Entire Lot	0 to 3 Inches Below Ground Surface	No Asbestos Detected
	DCA-SB-451BRANDON	9/1/2020		3 to 6 Inches Below Ground Surface	No Asbestos Detected
214 Mock Road	DCA-SF-214MOCKR-FY	9/1/2020	Front Yard	0 to 3 Inches Below Ground Surface	No Asbestos Detected
	DCA-SB-214MOCKR-FY	9/1/2020		3 to 6 Inches Below Ground Surface	No Asbestos Detected
	DCA-SF-214MOCKR-BY	9/1/2020	Back Yard	0 to 3 Inches Below Ground Surface	No Asbestos Detected
	DCA-SB-214MOCKR-BY	9/1/2020		3 to 6 Inches Below Ground Surface	No Asbestos Detected
643 Westside Terrace	DCA-SF-643WESTSIDE-FY	9/1/2020	Front Yard	0 to 3 Inches Below Ground Surface	No Asbestos Detected
	DCA-SB-643WESTSIDE-FY	9/1/2020		3 to 6 Inches Below Ground Surface	No Asbestos Detected
	DCA-SF-643WESTSIDE-BY	9/1/2020	Back Yard	0 to 3 Inches Below Ground Surface	No Asbestos Detected
	DCA-SB-643WESTSIDE-BY	9/1/2020		3 to 6 Inches Below Ground Surface	No Asbestos Detected

**DAVIDSON COMMUNITY ASBESTOS REMOVAL SITE EVALUATION
DAVIDSON, MECKLENBURG COUNTY, NORTH CAROLINA
SAMPLE SUMMARY**

Street Address	Sample ID	Date Collected	Location Description	Depth Collected	Analytical Results
510 Cardinal Court	DCA-SF-510CARDINAL-FY	9/1/2020	Front Yard	0 to 3 Inches Below Ground Surface	No Asbestos Detected
	DCA-SB-510CARDINAL-FY	9/1/2020		3 to 6 Inches Below Ground Surface	No Asbestos Detected
	DCA-SF-510CARDINAL-BY	9/1/2020	Back Yard	0 to 3 Inches Below Ground Surface	No Asbestos Detected
	DCA-SB-510CARDINAL-BY	9/1/2020		3 to 6 Inches Below Ground Surface	No Asbestos Detected
The Bungalows	DCA-SF-BUNGLAOW-SHED	9/1/2020	Vacant Area on East Side	0 to 3 Inches Below Ground Surface	No Asbestos Detected
	DCA-SB-BUNGLAOW-SHED	9/1/2020		3 to 6 Inches Below Ground Surface	No Asbestos Detected
	DCA-SF-BUNGLAOW-E-FY	9/1/2020	Five eastern bungalows, Jetton Street side	0 to 3 Inches Below Ground Surface	No Asbestos Detected
	DCA-SB-BUNGLAOW-E-FY	9/1/2020		3 to 6 Inches Below Ground Surface	No Asbestos Detected
	DCA-SF-BUNGLAOW-E-BY	9/1/2020	Five eastern bungalows, parking lot side	0 to 3 Inches Below Ground Surface	No Asbestos Detected
	DCA-SB-BUNGLAOW-E-BY	9/1/2020		3 to 6 Inches Below Ground Surface	No Asbestos Detected
	DCA-SF-BUNGLAOW-OFFICE	9/1/2020	Around office and courtyard	0 to 3 Inches Below Ground Surface	No Asbestos Detected
	DCA-SB-BUNGLAOW-OFFICE	9/1/2020		3 to 6 Inches Below Ground Surface	No Asbestos Detected
	DCA-SF-BUNGLAOW-W-FY	9/1/2020	Five western bungalows, Jetton Street side	0 to 3 Inches Below Ground Surface	No Asbestos Detected
	DCA-SB-BUNGLAOW-W-FY	9/1/2020		3 to 6 Inches Below Ground Surface	No Asbestos Detected
	DCA-SF-BUNGLAOW-W-BY	9/1/2020	Five western bungalows, parking lot side	0 to 3 Inches Below Ground Surface	No Asbestos Detected
	DCA-SB-BUNGLAOW-W-BY	9/1/2020		3 to 6 Inches Below Ground Surface	No Asbestos Detected
Gracian Investments Parcel Behind 411 Westside Terrace	DCA-SF-WESTSIDE-ISLAND	9/1/2020	Entire Lot	0 to 3 Inches Below Ground Surface	No Asbestos Detected
	DCA-SB-WESTSIDE-ISLAND	9/1/2020		3 to 6 Inches Below Ground Surface	No Asbestos Detected
139 Potts Street	DCA-SF-139POTTS-FY	9/30/2020	Front Yard	0 to 3 Inches Below Ground Surface	No Asbestos Detected
	DCA-SB-139POTTS-FY	9/30/2020		3 to 6 Inches Below Ground Surface	No Asbestos Detected
	DCA-SF-139POTTS-BY	9/30/2020	Back Yard	0 to 3 Inches Below Ground Surface	No Asbestos Detected
	DCA-SB-139POTTS-BY	9/30/2020		3 to 6 Inches Below Ground Surface	No Asbestos Detected
231 Crane Street	DCA-SF-231CRANE-FY	9/30/2020	Front Yard	0 to 3 Inches Below Ground Surface	No Asbestos Detected
	DCA-SB-231CRANE-FY	9/30/2020		3 to 6 Inches Below Ground Surface	No Asbestos Detected
	DCA-SF-231CRANE-BY	9/30/2020	Back Yard	0 to 3 Inches Below Ground Surface	No Asbestos Detected
	DCA-SB-231CRANE-BY	9/30/2020		3 to 6 Inches Below Ground Surface	No Asbestos Detected
136 Mock Circle	DCA-SF-136MOCKC-FY	9/30/2020	Front Yard	0 to 3 Inches Below Ground Surface	1.5% Asbestos
	DCA-SB-136MOCKC-FY	9/30/2020		3 to 6 Inches Below Ground Surface	0.75% Asbestos
	DCA-SF-136MOCKC-BY	9/30/2020	Back Yard	0 to 3 Inches Below Ground Surface	1.25% Asbestos
	DCA-SB-136MOCKC-BY	9/30/2020		3 to 6 Inches Below Ground Surface	1.75% Asbestos
	DCA-BM-136MOCKC-DW	9/30/2020	Left side Driveway	Ground Surface	20% Chrysotile Asbestos
	DCA-BM-136MOCKC-RO	9/30/2020	Runoff pathway, in front of house, around right side of	Ground Surface	20% Chrysotile Asbestos
445 Brandon Street	DCA-BM-445BRANDON-DW	9/30/2020	Driveway to left of house and around	Ground Surface	20% Chrysotile Asbestos
127 Potts Street	DCA-SF-127POTTS-FY	10/15/2020	Front Yard	0 to 3 Inches Below Ground Surface	No Asbestos Detected
	DCA-SB-127POTTS-FY	10/15/2020		3 to 6 Inches Below Ground Surface	No Asbestos Detected
	DCA-SF-127POTTS-BY	10/15/2020	Back Yard	0 to 3 Inches Below Ground Surface	No Asbestos Detected
	DCA-SB-127POTTS-BY	10/15/2020		3 to 6 Inches Below Ground Surface	No Asbestos Detected
119 Potts Street	DCA-SF-119POTTS-FY	10/15/2020	Front Yard	0 to 3 Inches Below Ground Surface	No Asbestos Detected
	DCA-SB-119POTTS-FY	10/15/2020		3 to 6 Inches Below Ground Surface	No Asbestos Detected
	DCA-SF-119POTTS-BY	10/15/2020	Back Yard	0 to 3 Inches Below Ground Surface	No Asbestos Detected
	DCA-SB-119POTTS-BY	10/15/2020		3 to 6 Inches Below Ground Surface	No Asbestos Detected

**DAVIDSON COMMUNITY ASBESTOS REMOVAL SITE EVALUATION
DAVIDSON, MECKLENBURG COUNTY, NORTH CAROLINA
SAMPLE SUMMARY**

Street Address	Sample ID	Date Collected	Location Description	Depth Collected	Analytical Results
120 Potts Street	DCA-SF-120POTTS-FY	10/15/2020	Front Yard	0 to 3 Inches Below Ground Surface	No Asbestos Detected
	DCA-SB-120POTTS-FY	10/15/2020		3 to 6 Inches Below Ground Surface	No Asbestos Detected
	DCA-SF-120POTTS-BY	10/15/2020	Back Yard	0 to 3 Inches Below Ground Surface	No Asbestos Detected
	DCA-SB-120POTTS-BY	10/15/2020		3 to 6 Inches Below Ground Surface	No Asbestos Detected
116 Potts Street	DCA-SF-116POTTS-FY	10/15/2020	Front Yard	0 to 3 Inches Below Ground Surface	No Asbestos Detected
	DCA-SB-116POTTS-FY	10/15/2020		3 to 6 Inches Below Ground Surface	No Asbestos Detected
	DCA-SF-116POTTS-BY	10/15/2020	Back Yard	0 to 3 Inches Below Ground Surface	No Asbestos Detected
	DCA-SB-116POTTS-BY	10/15/2020		3 to 6 Inches Below Ground Surface	No Asbestos Detected
220 Crane Street	DCA-SF-220CRANE-FY	10/15/2020	Front Yard	0 to 3 Inches Below Ground Surface	No Asbestos Detected
	DCA-SB-220CRANE-FY	10/15/2020		3 to 6 Inches Below Ground Surface	No Asbestos Detected
	DCA-SF-220CRANE-BY	10/15/2020	Back Yard	0 to 3 Inches Below Ground Surface	No Asbestos Detected
	DCA-SB-220CRANE-BY	10/15/2020		3 to 6 Inches Below Ground Surface	No Asbestos Detected
229 Crane Street	DCA-SF-229CRANE-FY	10/15/2020	Front Yard	0 to 3 Inches Below Ground Surface	No Asbestos Detected
	DCA-SB-229CRANE-FY	10/15/2020		3 to 6 Inches Below Ground Surface	No Asbestos Detected
	DCA-SF-229CRANE-BY	10/15/2020	Back Yard	0 to 3 Inches Below Ground Surface	No Asbestos Detected
	DCA-SB-229CRANE-BY	10/15/2020		3 to 6 Inches Below Ground Surface	No Asbestos Detected
402 Brandon Street	DCA-SF-402BRANDON-FY	10/15/2020	Front Yard	0 to 3 Inches Below Ground Surface	No Asbestos Detected
	DCA-SB-402BRANDON-FY	10/15/2020		3 to 6 Inches Below Ground Surface	No Asbestos Detected
	DCA-SF-402BRANDON-BY	10/15/2020	Back Yard	0 to 3 Inches Below Ground Surface	No Asbestos Detected
	DCA-SB-402BRANDON-BY	10/15/2020		3 to 6 Inches Below Ground Surface	No Asbestos Detected
443 Brandon Street	DCA-SF-443BRANDON	10/15/2020	Entire Lot	0 to 3 Inches Below Ground Surface	No Asbestos Detected
	DCA-SB-443BRANDON	10/15/2020		3 to 6 Inches Below Ground Surface	No Asbestos Detected
447 Brandon Street	DCA-SF-447BRANDON	10/15/2020	Entire Lot	0 to 3 Inches Below Ground Surface	No Asbestos Detected
	DCA-SB-447BRANDON	10/15/2020		3 to 6 Inches Below Ground Surface	No Asbestos Detected
103 Mallard Court	DCA-SF-103MALLARD-FY	10/15/2020	Front Yard	0 to 3 Inches Below Ground Surface	No Asbestos Detected
	DCA-SB-103MALLARD-FY	10/15/2020		3 to 6 Inches Below Ground Surface	No Asbestos Detected
	DCA-SF-103MALLARD-BY	10/15/2020	Back Yard	0 to 3 Inches Below Ground Surface	No Asbestos Detected
	DCA-SB-103MALLARD-BY	10/15/2020		3 to 6 Inches Below Ground Surface	No Asbestos Detected
104 Mallard Court	DCA-SF-104MALLARD-FY	10/15/2020	Front Yard	0 to 3 Inches Below Ground Surface	No Asbestos Detected
	DCA-SB-104MALLARD-FY	10/15/2020		3 to 6 Inches Below Ground Surface	No Asbestos Detected
	DCA-SF-104MALLARD-BY	10/15/2020	Back Yard	0 to 3 Inches Below Ground Surface	No Asbestos Detected
	DCA-SB-104MALLARD-BY	10/15/2020		3 to 6 Inches Below Ground Surface	No Asbestos Detected
660 Westside Terrace	DCA-SF-660WESTSIDE-FY	10/15/2020	Front Yard	0 to 3 Inches Below Ground Surface	No Asbestos Detected
	DCA-SB-660WESTSIDE-FY	10/15/2020		3 to 6 Inches Below Ground Surface	No Asbestos Detected
	DCA-SF-660WESTSIDE-BY	10/15/2020	Back Yard	0 to 3 Inches Below Ground Surface	No Asbestos Detected
	DCA-SB-660WESTSIDE-BY	10/15/2020		3 to 6 Inches Below Ground Surface	No Asbestos Detected
506 Cardinal Court	DCA-SF-506CARDINAL-FY	10/15/2020	Front Yard	0 to 3 Inches Below Ground Surface	No Asbestos Detected
	DCA-SB-506CARDINAL-FY	10/15/2020		3 to 6 Inches Below Ground Surface	No Asbestos Detected
	DCA-SF-506CARDINAL-BY	10/15/2020	Back Yard	0 to 3 Inches Below Ground Surface	No Asbestos Detected
	DCA-SB-506CARDINAL-BY	10/15/2020		3 to 6 Inches Below Ground Surface	No Asbestos Detected

**DAVIDSON COMMUNITY ASBESTOS REMOVAL SITE EVALUATION
DAVIDSON, MECKLENBURG COUNTY, NORTH CAROLINA
SAMPLE SUMMARY**

Street Address	Sample ID	Date Collected	Location Description	Depth Collected	Analytical Results
626 Westside Terrace	DCA-SF-626WESTSIDE-FY	10/15/2020	Front Yard	0 to 3 Inches Below Ground Surface	No Asbestos Detected
	DCA-SB-626WESTSIDE-FY	10/15/2020		3 to 6 Inches Below Ground Surface	No Asbestos Detected
	DCA-SF-626WESTSIDE-BY	10/15/2020	Back Yard	0 to 3 Inches Below Ground Surface	No Asbestos Detected
	DCA-SB-626WESTSIDE-BY	10/15/2020		3 to 6 Inches Below Ground Surface	No Asbestos Detected
620 Westside Terrace	DCA-SF-620WESTSIDE-FY	10/15/2020	Front Yard	0 to 3 Inches Below Ground Surface	No Asbestos Detected
	DCA-SB-620WESTSIDE-FY	10/15/2020		3 to 6 Inches Below Ground Surface	No Asbestos Detected
	DCA-SF-620WESTSIDE-BY	10/15/2020	Back Yard	0 to 3 Inches Below Ground Surface	No Asbestos Detected
	DCA-SB-620WESTSIDE-BY	10/15/2020		3 to 6 Inches Below Ground Surface	No Asbestos Detected

Notes:

- AJC: Ada Jenkins Center
- BEDS: Garden beds
- BM: Bulk material sample
- BY: Back yard
- DCA: Davidson Community Asbestos
- DW: Driveway
- E: East
- FY: Front yard
- GRDN: Garden
- ID: Identification
- LSY: Left side yard
- NE: Northeast
- NW: Northwest
- RO: Runoff
- ROW: Right-of-way
- RSY: Right side yard
- RWP: Roosevelt Wilson Park
- SB: Subsurface soil sample
- SBD1: Subsurface soil sample
- SE: Southeast
- SF: Surface soil sample
- s/g PCMc: Structures per gram, phase contrast microscopy equivalents
- SW: Southwest
- W: West

ENCLOSURE 3
LOGBOOK NOTES
(19 Sheets)



DEFYING
MOTHER NATURE[®]

SINCE 1916



All components of
this product are recyclable

Rite in the Rain

A patented, environmentally
responsible, all-weather writing paper
that sheds water and enables you to
write anywhere, in any weather.

Using a pencil or all-weather pen,
Rite in the Rain ensures that your
notes survive the rigors of the field,
regardless of the conditions.

© 2019
JL DARLING LLC
Tacoma, WA 98424-1017 USA
www.RiteintheRain.com

Item No. 371FX
NSN: 7530-01-642-7769
ISBN: 978-1-60134-186-0

Made in the USA
US Pat No. 6,863,940



Davidson
Community
Asbestos



Rite in the Rain[®]
ALL-WEATHER
UNIVERSAL
No 371FX

103X90320097050

Tetra Tech START

Logbook 1 of 1

6/8/2020

1300. T+ JS, RS, + DR on site @ mill, DSC's Tripp + Swanson en route

Objective - begin parcel assessment

1315 - H+S brief. Covid, ACM

1320 - Head to first parcel

1329 - DCA-SF-321 Watson - ~~BY~~ BY

1331 - DCA-SB-321 Watson - ~~BY~~ BY

1336 - DCA-SF-321 Watson - ~~BY~~ FY

1337 - DCA-SB-321 Watson - ~~BY~~ FY

1341 - DCA-SF-314 Griffith - FY

1344 - DCA-SB-314 Griffith - FY

1348 - DCA-SF-320 Griffith - FY

1349 - DCA-SB-320 Griffith - FY

1359 - DCA-SF-322 Griffith - FY

1400 - DCA-SB-322 Griffith - FY

1406 - DCA-SF-324 Griffith - FY

1407 - DCA-SB-324 Griffith - FY

1408 - DCA-SF-324 Griffith - BY

1409 - DCA-SB-324 Griffith - BY

1417 - DCA-SF-330 Griffith - FY

1418 - DCA-SB-330 Griffith - FY

1448 - DCA-SF-336 Griffith - FY

1449 - DCA-SB-336 Griffith - FY

1457 - DCA-SF-348 Griffith - FY

1458 - DCA-SB-348 Griffith - FY

Scale: 1 square =

6/8/20 cont'd

1503 - DCA-SF-356 Griffith - FY

1504 - DCA-SB-356 Griffith - FY

1505 - DCA-SF-356 Griffith - BY

1506 - DCA-SB-356 Griffith - BY

1554 - DCA-SF-243 Watson - FY

1555 - DCA-SB-243 Watson - BY

1556 - DCA-SF-243 Watson - FY

1557 - DCA-SB-243 Watson - BY

1559 - DCA-SF-315 Griffith - FY

1600 - DCA-SB-315 Griffith - FY

1601 - DCA-SF-315 Griffith - BY

1602 - DCA-SB-315 Griffith - BY

1613 - DCA-SF-319 Griffith - FY

1614 - DCA-SB-319 Griffith - FY

1615 - DCA-SF-319 Griffith - BY

1616 - DCA-SB-319 Griffith - BY

1624 - DCA-SF-325 Griffith - FY

1625 - DCA-SB-325 Griffith - FY

1631 - DCA-SF-331 Griffith - FY

1632 - DCA-SB-331 Griffith - FY

1633 - DCA-SF-331 Griffith - BY

1634 - DCA-SB-331 Griffith - BY

1646 - DCA-SF-335 Griffith - FY

1647 - DCA-SB-335 Griffith - FY

1648 - DCA-SF-335 Griffith - BY

Scale: 1 square =

16/06/2020

6/8/2020 cont'd
1649 - DCA - SB - 335 Griffith - BY
1720 - All off site



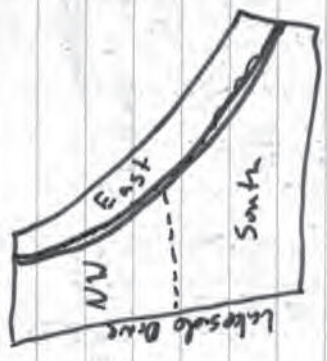
6/9/2020
645 - T7 JS, DR, RS on-site
- H+S brief

BSS - Setup personal air sampling
using pump 2776. Start flow = 2.096 l/min
Start time = 705

- 0714 - DCA^{SF} - 432 Griffith - RSY
- 0715 - DCA - SB - 432 Griffith - RSY
- 0716 - DCA - SF - 432 Griffith - LSY
- 0717 - DCA - SB - 432 Griffith - LSY
- 0721 - DCA - SF - 448 Griffith - FY
- 0722 - DCA - SB - 448 Griffith - FY
- 0723 - DCA - SF - 448 Griffith - BY
- 0724 - DCA - SB - 448 Griffith - BY
- 0728 - DCA - SF - 456 Griffith - FY
- 0729 - DCA - SB - 456 Griffith - FY
- 0743 - DCA - SF - 462 Griffith - FY
- 0744 - DCA - SB - 462 Griffith - ~~BY~~ FY
- 0817 - DCA - SF - Park West Lake - East
- 0819 - DCA - SB - Park West Lake - East
- 0821 - DCA - SF - Park West Lake - NW
- 0822 - DCA - SB - Park West Lake - NW
- 0823 - DCA - SF - Park West Lake - South
- 0824 - DCA - SB - Park West Lake - South

6/9/2020 cont'd

Park West Lake:



Park Griffith Lakeside:



- 835 - DCA - SF - Park Griffith Lakeside - NE
- 836 - DCA - SB - Park Griffith Lakeside - NE
- 838 - DCA - SF - Park Griffith Lakeside - NW
- 839 - DCA - SB - Park Griffith Lakeside - NW
- 840 - DCA - SF - Park Griffith Lakeside - SE
- 841 - DCA - SB - Park Griffith Lakeside - SE
- 842 - DCA - SF - Park Griffith Lakeside - SW
- 843 - DCA - SB - Park Griffith Lakeside - SW

Scale: 1 square =

6/9/2020 cont'd

- 0922 - DCA - SF - 240 Lakeside - FY
- 0923 - DCA - SB - 240 Lakeside - FY
- 0925 - DCA - SF - 240 Lakeside - BY
- 0926 - DCA - SB - 240 Lakeside - BY
- 0938 - DCA - SF - 235 Lakeside - FY
- 0939 - DCA - SB - 235 Lakeside - FY
- 0940 - DCA - SF - 235 Lakeside - BY
- 0941 - DCA - SB - 235 Lakeside - BY
- 0945 - DCA - SF - 229 Lakeside - FY
- 0946 - DCA - SB - 229 Lakeside - FY
- 0947 - DCA - SF - 229 Lakeside - BY
- 0948 - DCA - SB - 229 Lakeside - BY
- 1015 - DCA - SF - 211 Lakeside - FY
- 1016 - DCA - SB - 211 Lakeside - FY
- 1017 - DCA - SF - 211 Lakeside - BY
- 1018 - DCA - SB - 211 Lakeside - BY
- 1020 - DCA - SF - 204 Lakeside - LSY
- 1023 - DCA - SB - 204 Lakeside - LSY
- 1024 - DCA - SF - 204 Lakeside - RSY
- 1025 - DCA - SB - 204 Lakeside - RSY
- 1043 - DCA - SF - 505 Westside - FY
- 1044 - DCA - SB - 505 Westside - FY
- 1045 - DCA - SF - 505 Westside - BY
- 1046 - DCA - SB - 505 Westside - BY

Scale: 1 square =

6/9/2020

6/9/2020 cont'd

1100 - DCA - SF - 514 Westside - FY
 1101 - DCA - SB - 514 Westside - FY
 1102 - DCA - SF - 514 Westside - BY
 1103 - DCA - SB - 514 Westside - BY
 1126 - DCA - SF - 101 Mallard - FY
 1127 - DCA - SB - 101 Mallard - FY
 1128 - DCA - SF - 101 Mallard - BY
 1129 - DCA - SB - 101 Mallard - BY
 1133 - DCA - SF - 105 Mallard - FY
 1134 - DCA - SB - 105 Mallard - FY
 1135 - DCA - SF - 105 Mallard - BY
 1136 - DCA - SB - 105 Mallard - BY
 1145 - Pause air sample: 2.097 $\frac{1}{\text{min}}$
 1155 - Lunch
 1300 - Back on site
 1303 Resume air pump @ 2.103 $\frac{1}{\text{min}}$
 1305 - DCA - SF - 528 Westside - FY
 1306 - DCA - SB - 528 Westside - FY
 1307 - DCA - SF - 528 Westside - BY
 1308 - DCA - SB - 528 Westside - BY
 1321 - DCA - SF - 540 Westside - FY
 1323 - DCA - SB - 540 Westside - FY
 1324 - DCA - SF - 540 Westside - BY
 1325 - DCA - SB - 540 Westside - BY

Scale: 1 square =

6/9/2020 cont'd

1329 - DCA - SF - 663 Westside - FY
 1330 - DCA - SB - 663 Westside - FY
 1331 - DCA - SF - 663 Westside - BY
 1332 - DCA - SB - 663 Westside - BY
 1342 - DCA - SF - 668 Westside - FY
 1343 - DCA - SB - 668 Westside - FY
 1344 - DCA - SF - 668 Westside - BY
 1345 - DCA - SB - 668 Westside - BY
 1413 - DCA - SF - 652 Westside - FY
 1414 - DCA - SB - 652 Westside - FY
 1415 - DCA - SF - 652 Westside - BY
 1416 - DCA - SB - 652 Westside - BY
 1418 - DCA - SF - 650 Westside - FY
 1420 - DCA - SB - 650 Westside - FY
 1421 - DCA - SF - 650 Westside - BY
 1422 - DCA - SB - 650 Westside - BY
 1434 - DCA - SF - 523 Cardinal - FY
 1435 - DCA - SB - 523 Cardinal - FY
 1436 - DCA - SF - 523 Cardinal - BY
 1437 - DCA - SB - 523 Cardinal - BY
 1455 - DCA - SF - 655 Westside - FY
 1456 - DCA - SB - 655 Westside - FY
 1457 - DCA - SF - 655 Westside - BY
 1458 - DCA - SB - 655 Westside - BY

Scale: 1 square =

6/9/2020 cont'd

1524 - DCA - SF - 513 Westside - FY
 1525 - DCA - SB - 513 Westside - FY
 1526 - DCA - SF - 513 Westside - BY
 1527 - DCA - SB - 513 Westside - BY
 1528 - DCA - SF - 513 Westside - GRDN
 1529 - DCA - SB - 513 Westside - GRDN
 1536 - DCA - SF - 519 Westside - FY
 1538 - DCA - SB - 519 Westside - FY
 1539 - DCA - SF - 519 Westside - BY
 1540 - DCA - SB - 519 Westside - BY
 1554 - Turn off pump: flow rate = 2.128 c/min
 - DCA - PAS - 20200609
 1612 - DCA - SF - 302 Potts
 1613 - DCA - SB - 302 Potts
 1621 - DCA - SF - 303 Potts - FY
 1622 - DCA - SB - 303 Potts - FY
 1623 - DCA - SF - 303 Potts - LS4
 1624 - DCA - SB - 303 Potts - LS4
 1625 - DCA - SF - 303 Potts - BY
 1626 - DCA - SB - 303 Potts - BY
 1644 - DCA - SF - 115 Potts - FY
 1645 - DCA - SB - 115 Potts - FY
 1646 - DCA - SF - 115 Potts - BY
 1647 - DCA - SB - 115 Potts - BY
 1655 - All off site for the day

Scale: 1 square =

6/10/2020
 0700 - T + JS, RS, + DR on site @
 public works facility on Potts St
 0705 - H + S Kilgore
 0710 - Set up air sampler, same pump
 - Start pump @ 2.100 c/min
 0715 - Begin sampling @ Public Works



0719 - DCA - SF - 206 Potts - RS4
 0720 - DCA - SB - 206 Potts - RS4
 0730 - DCA - SF - 151 W. Hunt - FY
 0731 - DCA - SB - 151 W. Hunt - BY
 0733 - DCA - SF - 151 W. Hunt - BY
 0734 - DCA - SB - 151 W. Hunt - BY
 0746 - DCA - SF - 151 W. Hunt - Gfamble
 0747 - DCA - SB - 151 W. Hunt - Gfamble
 0800 - DCA - SF - A-JC Beds - BEDS
 0801 - DCA - SB - A-JC - BEDS
 0802 - DCA - SBD1 - A-JC - BEDS (6-12")

Scale: 1 square =

Rate in c/min

6/10/2020

- 819 - DCA - SF - 201 Gumble - FY
- 820 - DCA - SB - 201 Gumble - FY
- 821 - DCA - SF - 201 Gumble - BYs LSY
- 822 - DCA - SB - 201 Gumble - BYs LSY
- 840 - DCA - SF - 133 MOCKC - FY
- 841 - DCA - SB - 133 MOCKC - FY
- 842 - DCA - SF - 133 MOCKC - BY
- 843 - DCA - SB - 133 MOCKC - BY
- 844 - DCA - SF - 129 MOCKC - FY
- 846 - DCA - SB - 129 MOCKC - FY
- 847 - DCA - SF - 129 MOCKC - BY
- 848 - DCA - SB - 129 MOCKC - BY
- 907 - DCA - SF - 145 MOCKR - FY
- 909 - DCA - SB - 145 MOCKR - FY
- 910 - DCA - SF - 145 MOCKR - BY
- 911 - DCA - SB - 145 MOCKR - BY
- 921 - DCA - SF - 153 MOCKR - FY
- 922 - DCA - SB - 153 MOCKR - FY
- 923 - DCA - SF - 153 MOCKR - BY
- 924 - DCA - SB - 153 MOCKR - BY
- 925 - DCA - SF - 159 MOCKR - FY
- 926 - DCA - SB - 159 MOCKR - FY
- 927 - DCA - SF - 159 MOCKR - BY
- 928 - DCA - SB - 159 MOCKR - BY

Scale: 1 square =

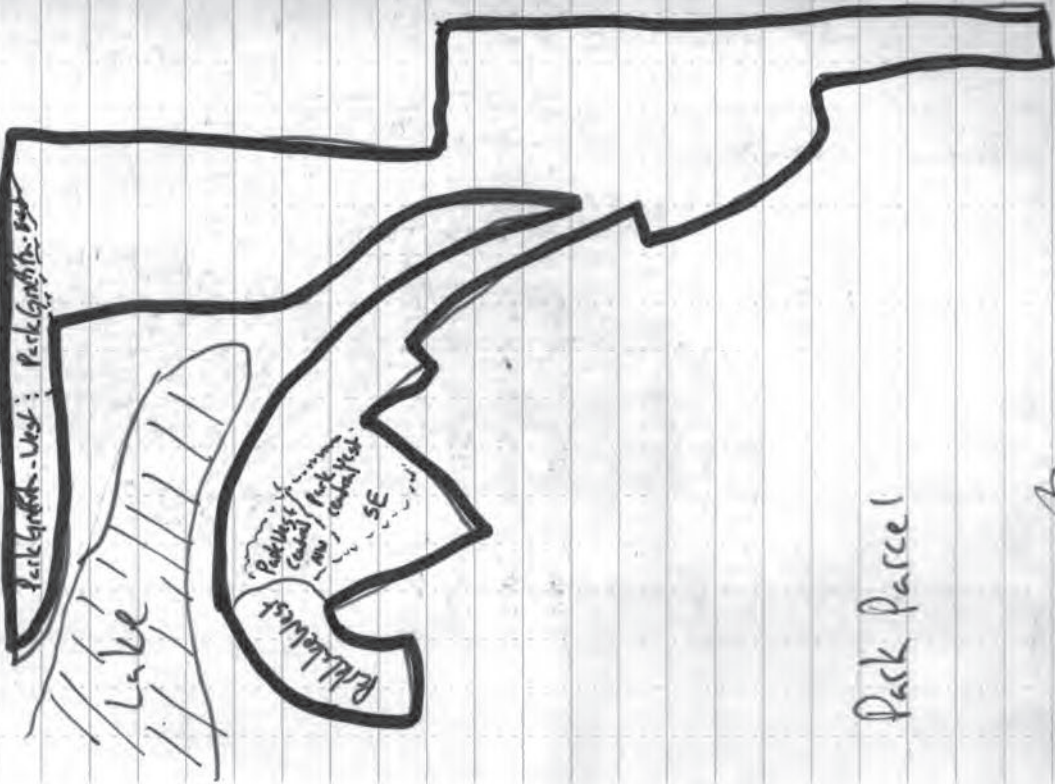
Karen on Rain

6/10/2020

- 952 - DCA - SF - MOCKR - ¹⁰⁰⁰ FY
- 953 - DCA - SB - MOCKR - FY
- 954 - DCA - SF - MOCKR - BY
- 955 - DCA - SB - MOCKR - BY
- ~~1005~~ 1010 - DCA - SF - 204 MOCKR
- 1011 - DCA - SB - 204 MOCKR
- 1022 - DCA - SF - MOCKR CDS
- 1023 - DCA - SB - MOCKR CDS
- 1026 - DCA - SF - Park Westside - North
- 1027 - DCA - SB - Park Westside - North
- 1028 - DCA - SF - Park Westside - South
- 1029 - DCA - SB - Park Westside - South
- 1054 - DCA - SF - Park Lake West
- 1055 - DCA - SB - Park Lake West
- 1113 - DCA - SF - Park West Central - NW
- 1115 - DCA - SB - Park West Central - NW
- 1116 - DCA - SF - Park West Central - SE
- 1117 - DCA - SB - Park West Central - SE
- 1130 - Air pump paused @ 2.070 ¹/_{min}
- Lunch
- 1245 - Back on site
- 1255 - Resume pump @ 2.099 ¹/_{min}
- 1256 - Collect DCA - SF - 302 Houston - FY
- 1257 - DCA - SB - 302 Houston - FY

Scale: 1 square =

6/10/2020 cont'd

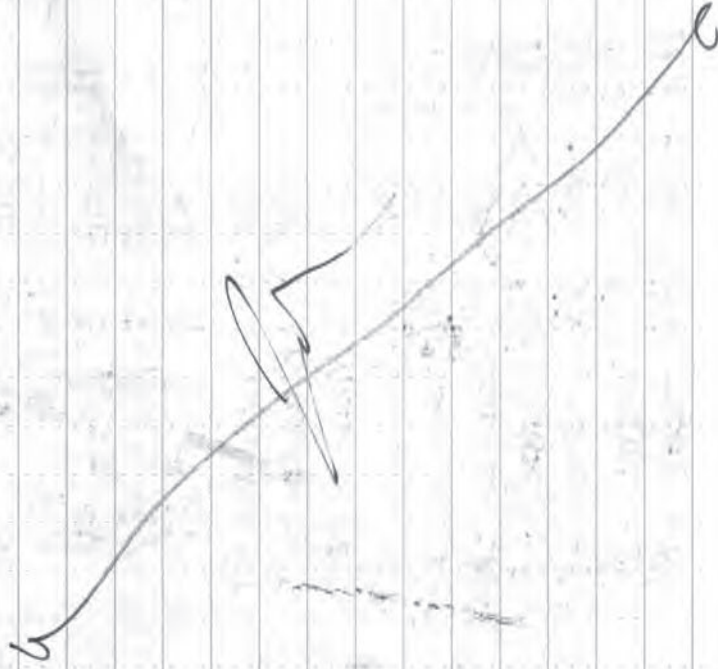


Scale: 1 square =

100m x 100m

6/10/2020 cont'd

- 1320 - DCA - SF - Park Griffiths - West
- 1323 - DCA - SB - Park Griffiths - West
- 1324 - DCA - SF - Park Griffiths - East
- 1325 - DCA - SB - Park Griffiths - East
- 1326 - DCA - SF - 341 Sloan
- 1327 - DCA - SB - 341 Sloan
- 1334 - Pump off @ 2.095 1/2 m
- DCA - PAS - 20200609
- 1400 - All off site



Scale: 1 square =

100m x 100m

6/23/2020

1000 - T+ Snyder + Reed on site
@ 304 S Main St (UMC Church)- clear, culm, sunny
- Begin parcel assessment

1030 - DCA - SF - 304 Main - BY

1031 - DCA - SB - 304 Main - BY

1035 - DCA - SF - 304 Main - RSY

1036 - DCA - SB - 304 Main - ~~LSY~~ RSY

1040 - DCA - SF - 304 Main - LSY

1041 - DCA - SB - 304 Main - LSY

1055 - DCA - SF - 131 Potts - FY

1056 - DCA - SB - 131 Potts - FY

1058 - DCA - SF - 131 Potts - BY

1059 - DCA - SB - 131 Potts - BY

1111 - DCA - SF - 416 Brandon - FY

1112 - DCA - SB - 416 Brandon - FY

1114 - DCA - SF - 416 Brandon - BY

1115 - DCA - SB - 416 Brandon - BY

1117 - DCA - SF - 416 Brandon - RSY

1118 - DCA - SB - 416 Brandon - RSY

1140 - DCA - SF - 535 Westside - FY

1141 - DCA - SB - 535 Westside - FY

1144 - DCA - SF - 535 Westside - BY

1145 - DCA - SB - 535 Westside - BY

Scale: 1 square =

Scale: 1 square =

6/23/2020 cont'd

1200 - DCA - SF - 187 Park - LSY

1201 - DCA - SB - 187 Park - LSY

1204 - DCA - SF - 187 Park - RSY

1205 - DCA - SB - 187 Park - RSY

1215 - DCA - SF - 636 Westside - FY

1216 - DCA - SB - 636 Westside - FY

1218 - DCA - SF - 636 Westside - BY

1219 - DCA - SB - 636 Westside - BY

1230 - DCA - SF - 203 Mockr - FY

1231 - DCA - SB - 203 Mockr - FY

1233 - DCA - SF - 203 Mockr - BY

1234 - DCA - SB - 203 Mockr - BY

1248 - DCA - SF - Houston ROW

1249 - DCA - SB - Houston ROW

1300 - DCA - SF - 638 Westside - FY

1301 - DCA - SB - 638 Westside - FY

1303 - DCA - SF - 638 Westside - BY

1304 - DCA - SB - 638 Westside - BY

1312 - DCA - SF - 640 Westside - FY

1313 - DCA - SB - 640 Westside - FY

1315 - DCA - SF - 640 Westside - BY

1316 - DCA - SB - 640 Westside - BY

1330 - DCA - SF - 219 Crame - FY

1331 - DCA - SB - 219 Crame - FY

Scale: 1 square =

6/23/2020 cont'd

- 1353 - DCA - 2nd SF - 219 Crane - BY
- 1334 - DCA - SB - 219 Crane - BY
- 1345 - DCA - SF - 260 Main - FY
- 1346 - DCA - SB - 260 Main - FY
- 1348 - DCA - SF - 260 Main - BY
- 1349 - DCA - SB - 260 Main - BY
- 1400 - All off site



Scale: 1 square =

100m on plan

8/14/2020

0910 - START Snyder + Reed on site
w/ OSCs Tripp + Swanson
- discuss approach

- 0920 - Set up @ 648 Westside Terrace
- 0945 - DCA - SF - 648 Westside - FY
- 0946 - DCA - SB - 648 Westside - FY
- 0948 - DCA - SF - 648 Westside - BY
- 0949 - DCA - SB - 648 Westside - BY
- 0953 - DCA - SF - 503 Cardinal - FY
- 0954 - DCA - SB - 503 Cardinal - FY
- 0955 - DCA - SF - 503 Cardinal - BY
- 0956 - DCA - SB - 503 Cardinal - BY
- 1015 - DCA - SF - 302 Jeffon - FY
- 1016 - DCA - SB - 302 Jeffon - FY
- 1017 - DCA - SF - 302 Jeffon - BY
- 1018 - DCA - SB - 302 Jeffon - BY
- 1035 - DCA - SF - 302 Lakeside - FY
- 1036 - DCA - SB - 302 Lakeside - FY
- 1037 - DCA - SF - 302 Lakeside - BY
- 1038 - DCA - SB - 302 Lakeside - BY
- 1050 - DCA - SF - 241 Lakeside - FY
- 1051 - DCA - SB - 241 Lakeside - FY
- 1052 - DCA - SF - 241 Lakeside - RSY
- 1053 - DCA - SB - 241 Lakeside - RSY

Scale: 1 square =

100m on plan



8/4/2020 cont'd

- 1112 - DCA - SF - 234 Lakeside - FY
- 1113 - DCA - SB - 234 Lakeside - FY
- 1115 - DCA - SF - 234 Lakeside - BY
- 1116 - DCA - SB - 234 Lakeside - BY
- 1130 - DCA - SF - 226 Lakeside - FY
- 1131 - DCA - SB - 226 Lakeside - FY
- 1132 - DCA - SF - 226 Lakeside - BY
- 1133 - DCA - SB - 226 Lakeside - BY
- 1155 - DCA - SF - 411 Westside
- 1156 - DCA - SB - 411 Westside
- 1200 - Lunch
- 1300 - Back to Roosevelt Wilson Park to meet Tod Wright.
- 1337 - DCA - SF - RWP - A
- 1338 - DCA - SB - RWP - A
- 1340 - DCA - SF - RWP - B
- 1341 - DCA - SB - RWP - B
- 1350 - DCA - SF - RWP - C
- 1351 - DCA - SB - RWP - C
- 1355 - DCA - SF - RWP - D
- 1356 - DCA - SB - RWP - D
- 1358 - DCA - SF - RWP - E
- 1359 - DCA - SB - RWP - E
- 1410 - DCA - SF - RWP - F
- 1411 - DCA - SB - RWP - F

Scale: 1 square =

8/4/2020 cont'd

- 1413 - DCA - SF - RWP - G
- 1414 - DCA - SB - RWP - G
- 1425 - DCA - SF - RWP - H
- 1426 - DCA - SB - RWP - H
- 1428 - DCA - SF - RWP - I
- 1429 - DCA - SB - RWP - I
- 1435 - DCA - SF - RWP - J
- 1436 - DCA - SB - RWP - J
- 1438 - DCA - SF - RWP - K
- 1439 - DCA - SB - RWP - K
- 1442 - DCA - SF - RWP - L
- 1443 - DCA - SB - RWP - L
- 1445 - DCA - SF - RWP - M
- 1446 - DCA - SB - RWP - M
- 1525 - DCA - SF - 215 Mockr - FY
- 1526 - DCA - SB - 215 Mockr - FY
- 1527 - DCA - SF - 215 Mockr - BY
- 1528 - DCA - SB - 215 Mockr - BY
- 1538 - DCA - SF - 211 Mockr - FY
- 1539 - DCA - SB - 211 Mockr - FY
- 1540 - DCA - SF - 211 Mockr - BY
- 1541 - DCA - SB - 211 Mockr - BY
- 1549 - DCA - SF - 210 Mockr - FY
- 1550 - DCA - SB - 210 Mockr - FY

Scale: 1 square =

Return to Room

8/4/2020 cont'd

1551 - DCA - SF - 210 MOCKER - BY
 1552 - DCA - SB - 210 MOCKER - BY
 1614 - DCA - SF - MOCKER - ISLAND
 1615 - DCA - SB - MOCKER - ISLAND
 1627 - DCA - SF - 514 Cardinal - FY
 1628 - DCA - SB - 514 Cardinal - FY
 1629 - DCA - SF - 514 Cardinal - BY
 1630 - DCA - SB - 514 Cardinal - BY
 1645 - DCA - SF - 612 Westside - FY
 1646 - DCA - SB - 612 Westside - FY
 1647 - DCA - SF - 612 Westside - BY
 1648 - DCA - SB - 612 Westside - BY
 1705 - Bulk material sample collected from
 customer parking lot @ Davidson
 Craft Pizzeria. DCA - BM - 118 MOCKER Rd
 1711 - DCA - SF - 118 MOCKER - FY
 1712 - DCA - SB - 118 MOCKER - FY
 1713 - DCA - SF - 118 MOCKER - BY
 1714 - DCA - SB - 118 MOCKER - BY
 1800 - All off site

Scale: 1 square =

e

8/5/2020

0900 - START Snyder + Reed to
 114 Lake Davidson Circle to resume

Sampling.

weather: clear, calm, 80°

0905 - Collect DCA - SF - 114 Lake Davidson - FY
 0906 - DCA - SB - 114 Lake Davidson - FY
 0908 - DCA - SF - 114 Lake Davidson - BY
 0909 - DCA - SB - 114 Lake Davidson - BY
 0930 - DCA - SF - 121 MOCKER - FY
 0931 - DCA - SB - 121 MOCKER - FY
 0933 - DCA - SF - 121 MOCKER - BY
 0934 - DCA - SB - 121 MOCKER - BY
 0946 - DCA - SF - 140 MOCKER - FY
 0947 - DCA - SB - 140 MOCKER - FY
 0948 - DCA - SF - 140 MOCKER - BY
 0949 - DCA - SB - 140 MOCKER - BY
 1005 - DCA - SF - 152 MOCKER - FY
 1006 - DCA - SB - 152 MOCKER - FY
 1007 - DCA - SF - 152 MOCKER - BY
 1008 - DCA - SB - 152 MOCKER - BY
 1021 - DCA - SF - 412 Brandon
 1022 - DCA - SB - 412 Brandon
 1035 - DCA - SF - 223 CRANE - FY
 1036 - DCA - SB - 223 CRANE - FY

Scale: 1 square =

Break

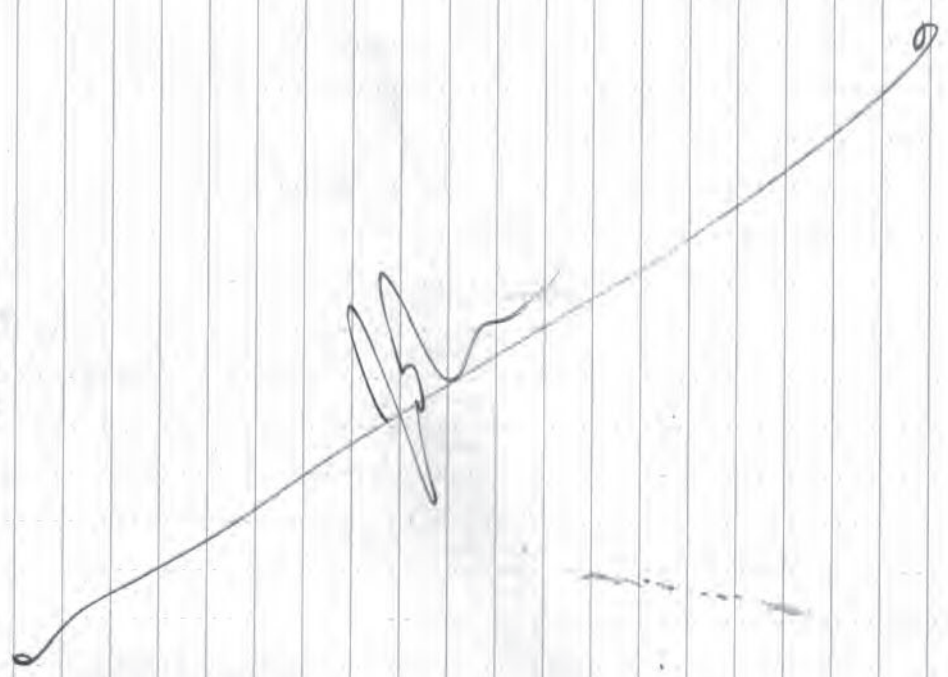
8/5/2020 cont'd

- 1037 - DCA - SF - 223 CRANE - BY
- 1038 - DCA - SB - 223 CRANE - BY
- 1050 - DCA - SF - 128 POTTS - FY
- 1051 - DCA - SB - 128 POTTS - FY
- 1052 - DCA - SF - 128 POTTS - BY
- 1053 - DCA - SB - 128 POTTS - BY
- 1115 - DCA - SF - 235 CRANE - FY
- 1116 - DCA - SB - 235 CRANE - FY
- 1118 - DCA - SF - 235 CRANE - BY
- 1119 - DCA - SB - 235 CRANE - BY
- 1134 - DCA - SF - 110 McIlcred - FY
- 1135 - DCA - SB - 110 McIlcred - FY
- 1137 - DCA - SF - 110 McIlcred - BY
- 1138 - DCA - SB - 110 McIlcred - BY
- 1210 - DCA - SF - 100 POTTS - ROW
- 1211 - DCA - SB - 100 POTTS - ~~BY~~ ROW
- 1225 - DCA - SF - SLOANS - ROW
- 1226 - DCA - SB - SLOANS - ROW
- 1231 - DCA - SF - SLOANN - ROW
- 1232 - DCA - SB - SLOANN - ROW
- 1242 - DCA - SF - 329 SLOAN - ROW
- 1243 - DCA - SB - 329 SLOAN - ROW
- 1256 - DCA - SF - RWP - ROW
- 1251 - DCA - SB - RWP - ROW

Scale: 1 square =

8/5/2020 cont'd

- 1255 - DCA - SF - 331 Graft - ROW
- 1256 - DCA - SB - 331 Graft - ROW
- 1305 - All off side



Scale: 1 square =

Plot in the Row

9/1/2020

0905 - T + Reed + Snyder w/ OSC
Tripp on site @ warehouse.

0915 - Setup Gilian 5000 pump

START FLOW: 1.997 $\frac{1}{\text{min}}$ START TIME: 9:25

940 - Collect DCA-SF-214 CRANE-FY

941 - DCA - SB - 214 CRANE - FY

942 - DCA - SF - 214 CRANE - BY

943 - DCA - SB - 214 CRANE - BY

946 - DCA - SF - 225 CRANE - FY

947 - DCA - SB - 225 CRANE - FY

948 - DCA - SF - 225 CRANE - BY

949 - DCA - SB - 225 CRANE - BY

1010 - DCA - SF - 445 BRANDON

1011 - DCA - SB - 445 BRANDON

1013 - DCA - SF - 451 BRANDON

1014 - DCA - SB - 451 BRANDON

1030 - DCA - SF - 214 MOCKER - FY

1031 - DCA - SB - 214 MOCKER - FY

1032 - DCA - SF - 214 MOCKER - BY

1033 - DCA - SB - 214 MOCKER - BY

1051 - DCA - SF - 643 WESTSIDE - FY

1052 - DCA - SB - 643 WESTSIDE - FY

1053 - DCA - SF - 643 WESTSIDE - BY

1054 - DCA - SB - 643 WESTSIDE - BY

Scale: 1 square =

9/1/2020 cont'd

1108 - DCA - SF - SID CARDINAL - FY

1109 - DCA - SB - SID CARDINAL - FY

1110 - DCA - SF - SID CARDINAL - BY

1111 - DCA - SB - SID CARDINAL - BY

1130 - DCA - SF - BUNGALOW - SHED

1131 - DCA - SB - BUNGALOW - SHED

1135 - DCA - SF - BUNGALOWE - ~~BY~~ FY

1136 - DCA - SB - BUNGALOWE - FY

1138 - DCA - SF - BUNGALOWE - BY

1139 - DCA - SB - BUNGALOWE - BY

1151 - DCA - SF - BUNGALOW - OFFICE

1152 - DCA - SB - BUNGALOW - OFFICE

1200 - DCA - SF - BUNGALOW - FY

1201 - DCA - SB - BUNGALOW - BY FY

1204 - DCA - SF - BUNGALOW - BY

1205 - DCA - SB - BUNGALOW - BY

1215 - DCA - SF - MOCK ISLANDS - westside -
ISLAND

1216 - DCA - SB - MOCK ISLANDS - westside -
ISLAND

1225 - END air sample DCA-PAS-20200901

End flow rate - 1.998 $\frac{1}{\text{min}}$

1230 - All off site

Scale: 1 square =

100 - 100

9/30/2020

1000 - T+ Snyder on site @ 139 Potts St.

- Westler - Clear, Calm, 75°

1010 - Collect DCA-SF-139Potts-FY

1013 - Collect DCA-SB-139Potts-FY

1015 - Collect DCA-SF-139Potts-BY

1018 - Collect DCA-SB-139Potts-BY

1030 - T+ to 231 Crane St.

1037 - Collect DCA-SF-231CRANE-FY

1038 - Collect DCA-SB-231CRANE-FY

1039 - Collect DCA-SF-231CRANE-BY

1040 - Collect DCA-SB-231CRANE-BY

1105 - Collect bulk material OCA-BM-

445 BRANDU-DW from driveway

1115 - T+ to 136 Mock Circle

1120 - Collect DCA-SF-136MOCK-FY

1121 - Collect DCA-SB-136MOCK-FY

1122 - Collect DCA-SF-136MOCK-BY

1123 - Collect DCA-SB-136MOCK-BY

1125 - Collect bulk material sample from

driveway @ 136 Mock Circle: DCA-BM-136MOCK-DW

1130 - Collect bulk material sample from

runoff pthway: DCA-BM-136MOCK-RO

1140 - Snyder off site

Scale: 1 square =

10/15/20

0900 - T+ Snyder + Reed on site @ Potts Street

Calibrate Gilzan GilAirS pumps

Sample	START FLOW	START TIME	STOP FLOW	STOP TIME
A	2250 ^{ml} /min	9:15	2273 ^{ml} /min	13:30
B	2278 ^{ml} /min	9:15	Scrapped	

0925 - Collect DCA-SF-127Potts-FY

0926 - Collect DCA-SB-127Potts-FY

0927 - Collect DCA-SF-127Potts-BY

0928 - Collect DCA-SB-127Potts-BY

0936 - Collect DCA-SF-119Potts-FY

0937 - Collect DCA-SB-119Potts-BY

0938 - Collect DCA-SF-119Potts-BY

0939 - Collect DCA-SB-119Potts-BY

0950 - Collect DCA-SF-120Potts-FY

0951 - Collect DCA-SB-120Potts-FY

0952 - Collect DCA-SF-120Potts-BY

0953 - Collect DCA-SB-120Potts-BY

1001 - Collect DCA-SF-116Potts-FY

1002 - Collect DCA-SB-116Potts-FY

1003 - Collect DCA-SF-116Potts-BY

1004 - Collect DCA-SB-116Potts-BY

1016 - Collect DCA-SF-220CRANE-FY

1017 - Collect DCA-SB-220CRANE-FY

Scale: 1 square =

10/15/26 cont'd

- 1018 - Collect DCA-SF-220CRANE-BY
- 1019 - Collect DCA-SB-220CRANE-BY
- 1030 - Collect DCA-SF-229CRANE-FY
- 1031 - Collect DCA-SB-229CRANE-FY
- 1032 - Collect DCA-SF-229CRANE-BY
- 1033 - Collect DCA-SB-229CRANE-BY
- 1047 - Collect DCA-SF-402BRANDON-FY
- 1048 - Collect DCA-SB-402BRANDON-FY
- 1049 - Collect DCA-SF-402BRANDON-BY
- 1050 - Collect DCA-SB-402BRANDON-BY
- 1055 - "B" Pump keeps faulting. Sample success

- 1101 - Collect DCA-SF-443BRANDON
- 1102 - Collect DCA-SB-443BRANDON
- 1104 - Collect DCA-SF-447BRANDON
- 1105 - Collect DCA-SB-447BRANDON
- 1206 - Collect DCA-SF-103MALLARD-FY
- 1207 - Collect DCA-SB-103MALLARD-FY
- 1208 - Collect DCA-SF-103MALLARD-BY
- 1209 - Collect DCA-SB-103MALLARD-BY
- 1215 - Collect DCA-SF-104MALLARD-FY
- 1216 - Collect DCA-SB-104MALLARD-FY
- 1217 - Collect DCA-SF-104MALLARD-BY
- 1218 - Collect DCA-SB-104MALLARD-BY

Scale: 1 square =

10/15/20 cont'd

- 1232 - Collect DCA-SF-660WESTSIDE-FY
- 1233 - Collect DCA-SB-660WESTSIDE-FY
- 1234 - Collect DCA-SF-660Westside-BY
- 1235 - Collect DCA-SB-660WESTSIDE-BY
- 1245 - Collect DCA-SF-506CARDINAL-FY
- 1246 - Collect DCA-SB-506CARDINAL-FY
- 1247 - Collect DCA-SF-506CARDINAL-BY
- 1248 - Collect DCA-SB-506CARDINAL-BY
- ~~1301 - Collect DCA-SF-637Westside-FY~~
- ~~1302 - Collect DCA-SB-637Westside-FY~~
- 1303 - Collect DCA-SF-637Westside-BY
- 1304 - Collect DCA-SB-637Westside-BY

Tenet denied access to 637

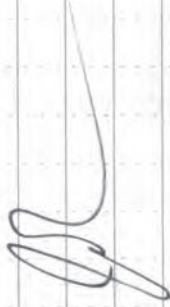
- 1310 - Collect DCA-SF-626Westside-FY
- 1311 - Collect DCA-SB-626Westside-FY
- 1312 - Collect DCA-SF-626Westside-BY
- 1313 - Collect DCA-SB-626Westside-BY
- 1315 - Collect DCA-SF-620Westside-FY
- 1316 - Collect DCA-SB-620Westside-FY
- 1317 - Collect DCA-SF-620Westside-BY
- 1318 - Collect DCA-SB-620Westside-BY
- 1330 - Sampling pump off
- 1340 - All off site

Scale: 1 square =

Robertson

End of
field work

11/17/2020



1

10/20/2020



© JL DARLING LLC
 2604 PACIFIC HWY EAST
 TACOMA, WA 98424 USA
RiteInTheRain.com

Scale: 1 square = _____

ENCLOSURE 4
PHOTOGRAPHIC LOG
(Four Pages)





OFFICIAL PHOTOGRAPH NO. 1
U.S. ENVIRONMENTAL PROTECTION AGENCY

TOLIN:	97-005	Location:	Davidson Community Asbestos Removal Site Evaluation
Orientation:	East	Date:	August 5, 2020
Photographer:	Christopher Tripp, U.S. Environmental Protection Agency (EPA)	Witness:	John Snyder, Tetra Tech Inc. (Tetra Tech), Superfund Technical Assessment and Response Team (START)
Subject:	Members of the START sampling team collected soil samples from residences along Mallard Court in Davidson, North Carolina.		



OFFICIAL PHOTOGRAPH NO. 2
U.S. ENVIRONMENTAL PROTECTION AGENCY

TOLIN: 97-005 **Location:** Davidson Community Asbestos Removal Site Evaluation

Orientation: East-southeast **Date:** September 1, 2020

Photographer: Christopher Tripp, US EPA **Witness:** John Snyder, Tetra Tech START

Subject: Members of the START sampling team prepared to collect soil samples from residences along Mock Road in Davidson, North Carolina.



OFFICIAL PHOTOGRAPH NO. 3
U.S. ENVIRONMENTAL PROTECTION AGENCY

TOLIN: 97-005

Location: Davidson Community Asbestos
Removal Site Evaluation

Orientation: North

Date: October 15, 2020

Photographer: Christopher Tripp, US EPA

Witness: John Snyder, Tetra Tech START

Subject: Members of the START sampling team collected soil samples from residences along Westside Terrace in Davidson, North Carolina.



OFFICIAL PHOTOGRAPH NO. 4
U.S. ENVIRONMENTAL PROTECTION AGENCY

TOLIN: 97-005 **Location:** Davidson Community Asbestos
Removal Site Evaluation

Orientation: Not Applicable **Date:** September 30, 2020

Photographer: John Snyder, Tetra Tech START **Witness:** None

Subject: START collected bulk material samples from residences along Mock Circle in
Davidson, North Carolina.