
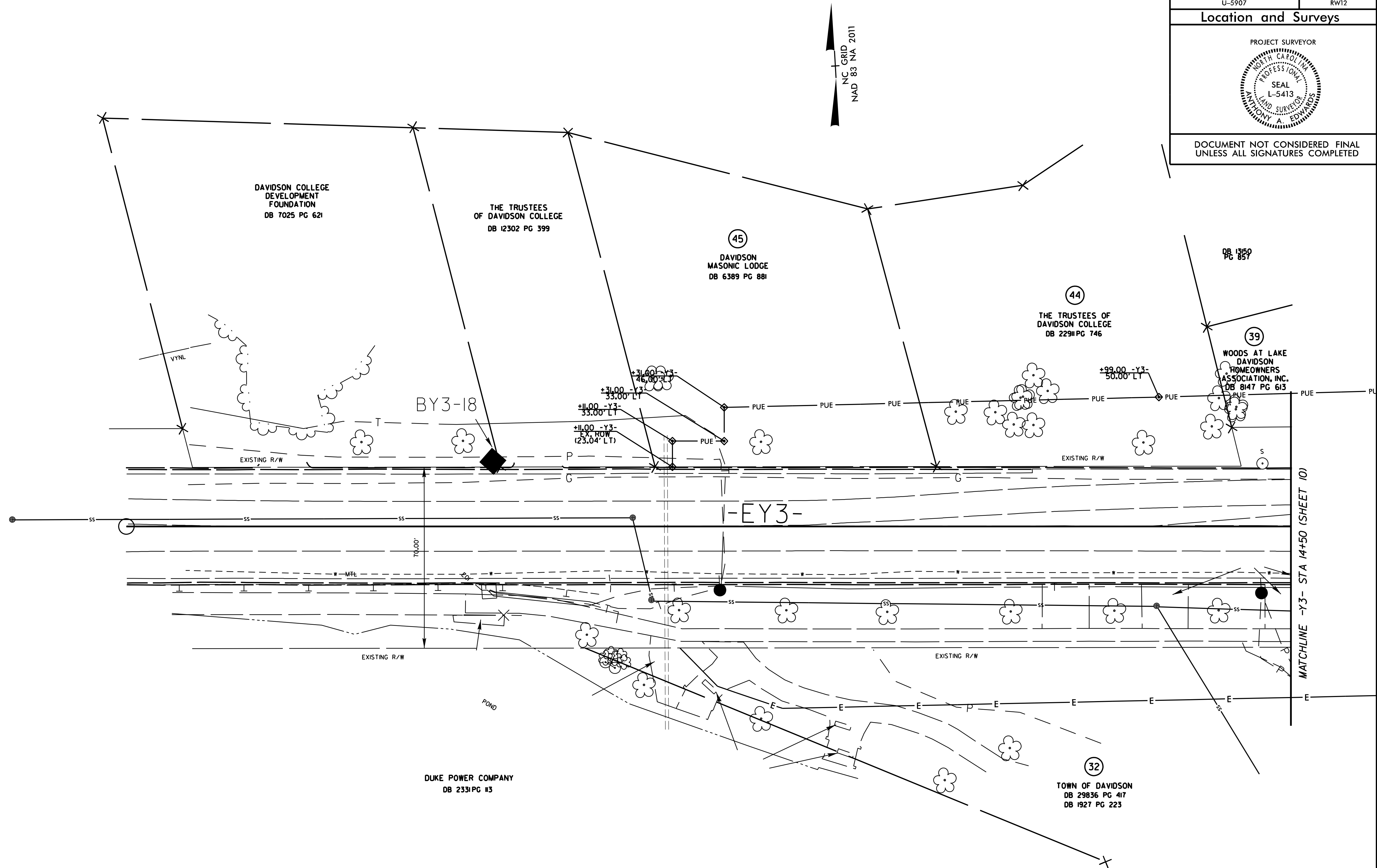


6/2/09

PROJECT REFERENCE NO. U-5907	SHEET NO. RW12
Location and Surveys	
PROJECT SURVEYOR	
	
DOCUMENT NOT CONSIDERED FINAL UNLESS ALL SIGNATURES COMPLETED	



REVISIONS

65
64
63
62
61
60
59
58
57
56
55
54
53
52
51
50
49
48
47
46
45
44
43
42
41
40
39
38
37
36
35
34
33
32
31
30
29
28
27
26
25
24
23
22
21
20
19
18
17
16
15
14
13
12
11
10
9
8
7
6
5
4
3
2
1

NOTES:

- IF FURTHER INFORMATION REGARDING PROJECT CONTROL IS NEEDED, PLEASE CONTACT THE LOCATION AND SURVEYS UNIT.
- PROJECT CONTROL WAS ESTABLISHED USING GNSS, THE GLOBAL NAVIGATION SATELLITE SYSTEM.

RADI DIMENSIONS ARE TO THE EDGE OF PAVEMENT UNLESS OTHERWISE NOTED

SEE SHEET 16 FOR -Y3- PROFILE

MATCHLINE -Y3- STA 14+50 (SHEET 10)