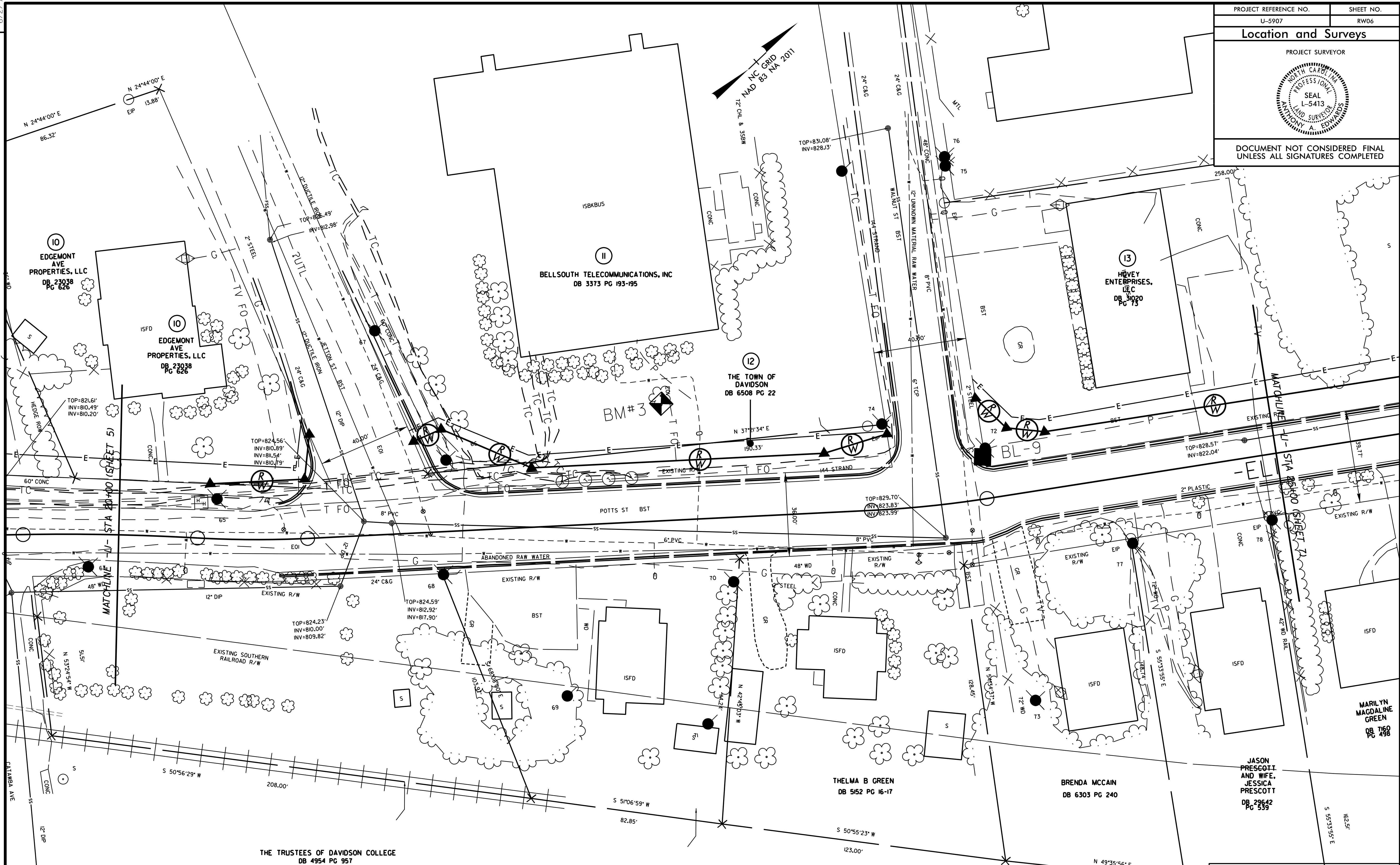


6/2/09

PROJECT REFERENCE NO. U-5907	SHEET NO. RW06
Location and Surveys	
PROJECT SURVEYOR	
DOCUMENT NOT CONSIDERED FINAL UNLESS ALL SIGNATURES COMPLETED	

REVISIONS



NOTES:

- IF FURTHER INFORMATION REGARDING PROJECT CONTROL IS NEEDED, PLEASE CONTACT THE LOCATION AND SURVEYS UNIT.
- PROJECT CONTROL WAS ESTABLISHED USING GNSS, THE GLOBAL NAVIGATION SATELLITE SYSTEM.

PROPOSED SIDEWALK
 REMOVE & REPLACE EXISTING SIDEWALK
 RADII DIMENSIONS ARE TO THE EDGE OF PAVEMENT UNLESS OTHERWISE NOTED
 MATCH EXISTING -U- PROFILE
 SEE SHEET 14 FOR -LI- PROFILE

TOP=820.23'
INV=807.97'
INV=808.45'
INV=807.78'

TOP=814.83'
INV=806.07'

HUBERT O WRIGHT AND WIFE,
RUBY M WRIGHT
DB 9983 PG 792

1. ALL DIMENSIONS ARE TO THE EDGE OF PAVEMENT UNLESS OTHERWISE NOTED.
 2. MATCH EXISTING -U- PROFILE SEE SHEET 14 FOR -LI- PROFILE.
 3. ALL UTILITY LINES ARE TO BE DEEPENED TO A MINIMUM OF 48\"/>