

5/14/2023

Kimley»Horn
 200 SOUTH TRYON, SUITE 200
 CHARLOTTE, N.C. 28202

PROJECT REFERENCE NO. U-5907	SHEET NO. 16
ROADWAY DESIGN ENGINEER	HYDRAULICS ENGINEER

2023

FRANK D. MASTERSON
 PROFESSIONAL ENGINEER
 SEAL 037923
 NORTH CAROLINA

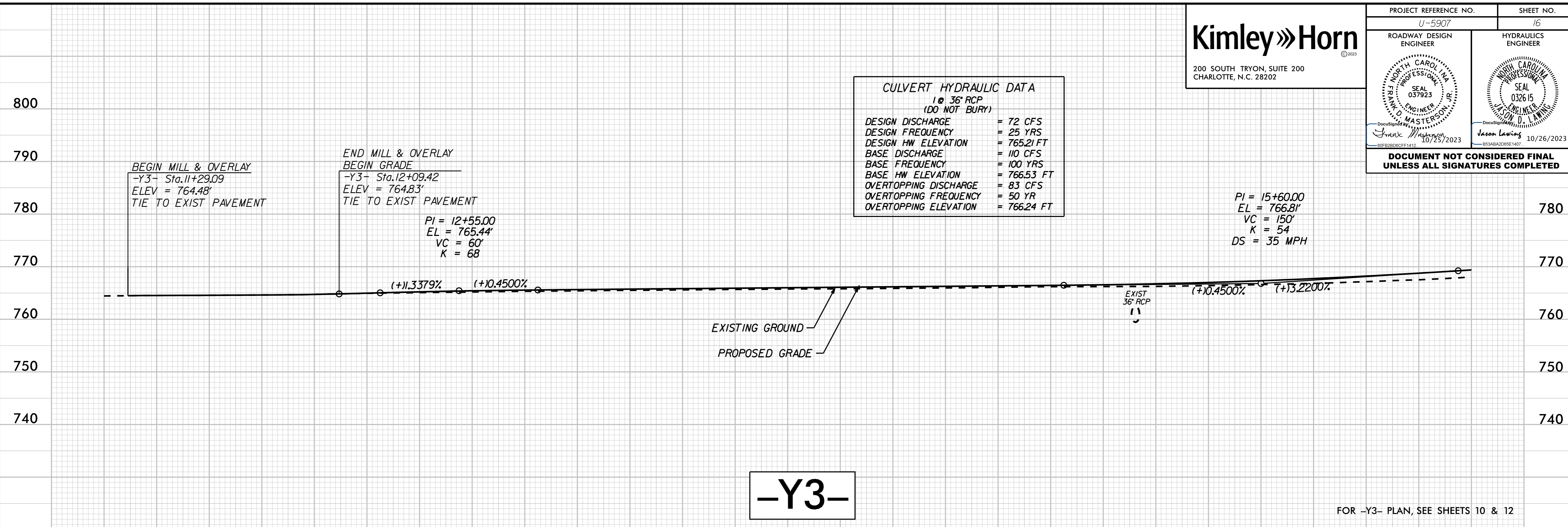
JASON LAWING
 PROFESSIONAL ENGINEER
 SEAL 032615
 NORTH CAROLINA

10/26/2023

**DOCUMENT NOT CONSIDERED FINAL
 UNLESS ALL SIGNATURES COMPLETED**

CULVERT HYDRAULIC DATA
 1 @ 36" RCP
 (DO NOT BURY)

DESIGN DISCHARGE	= 72 CFS
DESIGN FREQUENCY	= 25 YRS
DESIGN HW ELEVATION	= 765.21 FT
BASE DISCHARGE	= 110 CFS
BASE FREQUENCY	= 100 YRS
BASE HW ELEVATION	= 766.53 FT
OVERTOPPING DISCHARGE	= 83 CFS
OVERTOPPING FREQUENCY	= 50 YR
OVERTOPPING ELEVATION	= 766.24 FT



-Y3-

FOR -Y3- PLAN, SEE SHEETS 10 & 12

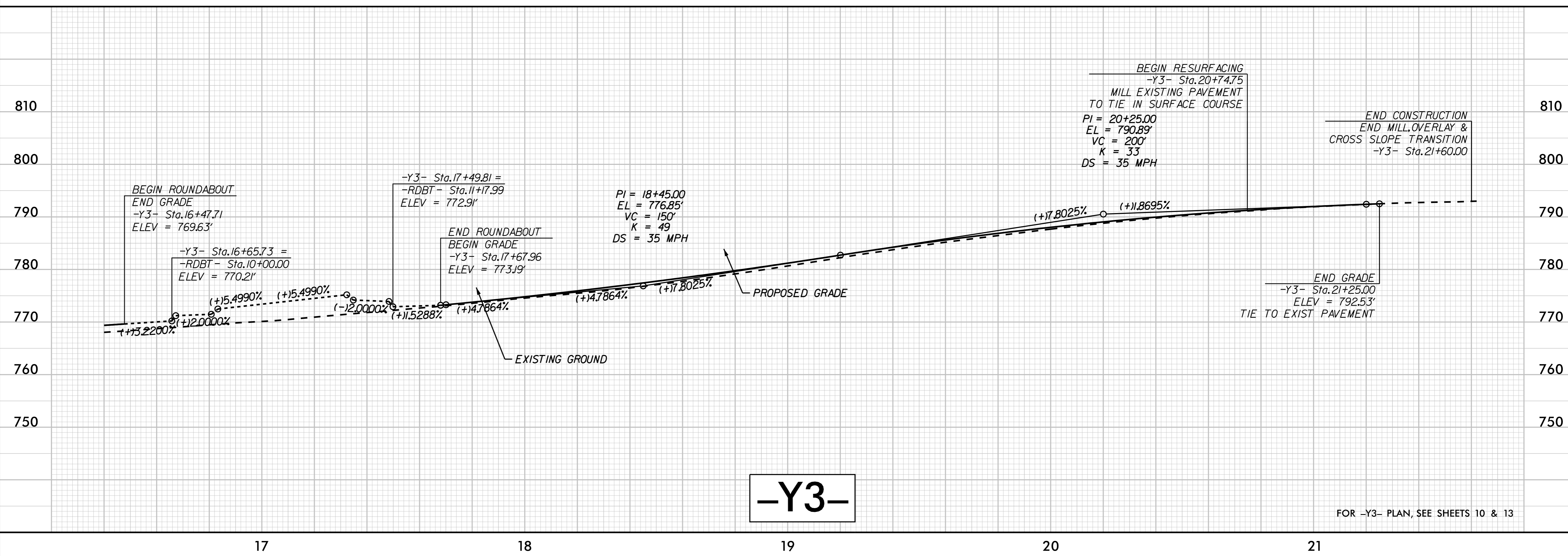
12

13

14

15

16



-Y3-

FOR -Y3- PLAN, SEE SHEETS 10 & 13

17

18

19

20

21

10/9/2023