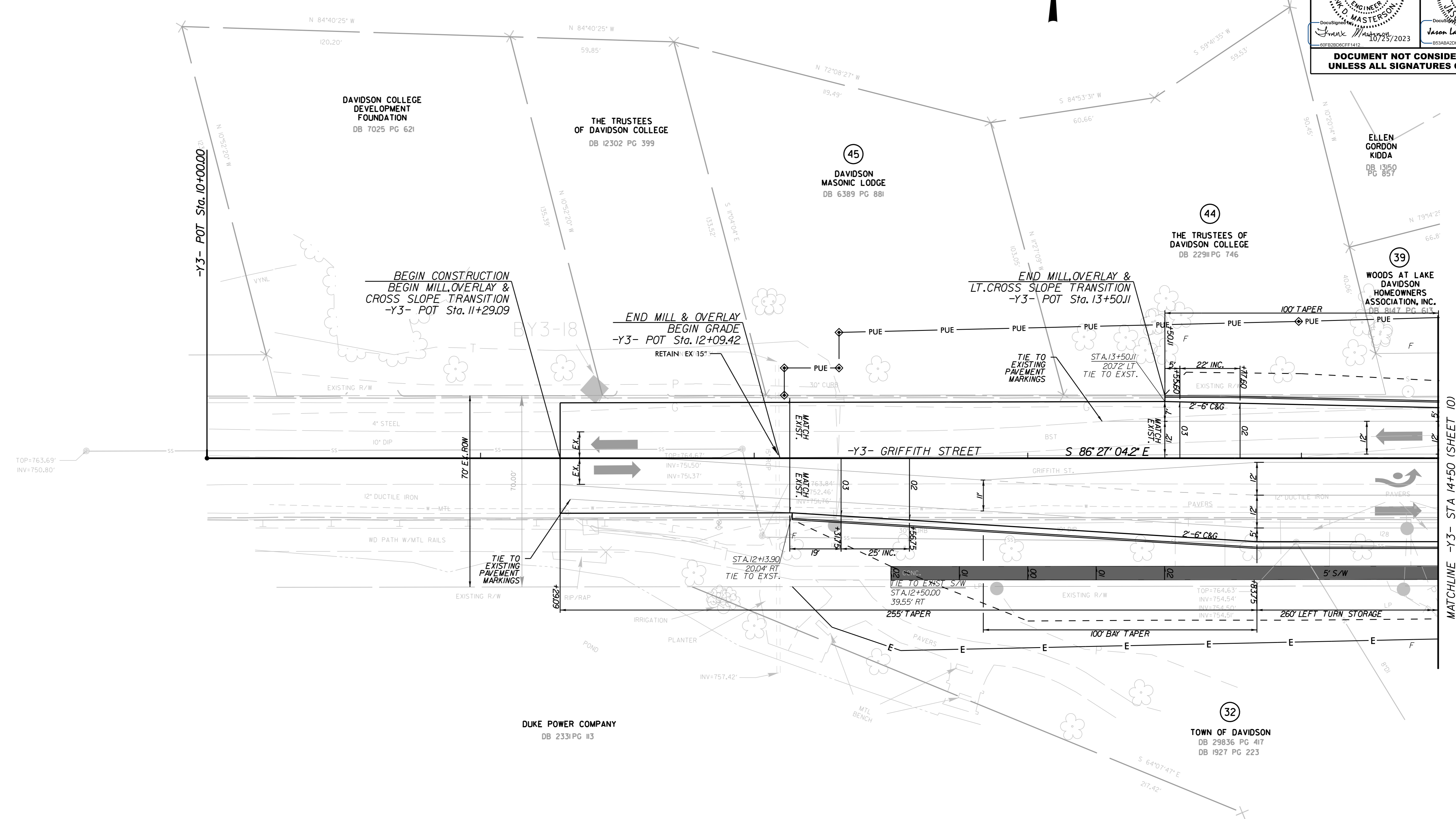
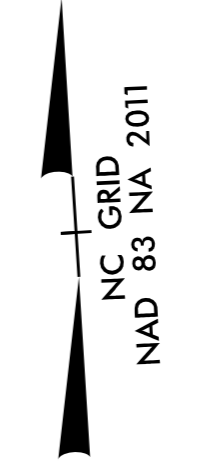


PROJECT REFERENCE NO.		SHEET NO.	
U-5907		12	
RW SHEET NO.			
ROADWAY DESIGN ENGINEER		HYDRAULICS ENGINEER	
<b>DOCUMENT NOT CONSIDERED FINAL UNLESS ALL SIGNATURES COMPLETED</b>			



**PROPOSED DRIVEWAYS, MONOLITHIC ISLAND, AND SIDEWALK**

RADI DIMENSIONS ARE TO THE EDGE OF PAVEMENT UNLESS OTHERWISE NOTED

SEE SHEET 16 FOR -Y3- PROFILE