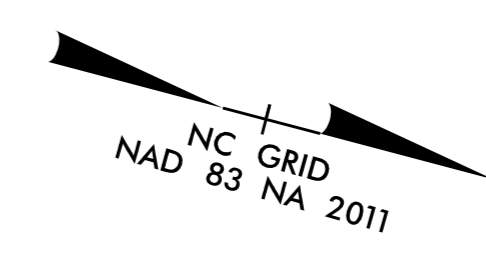


5/14/1999

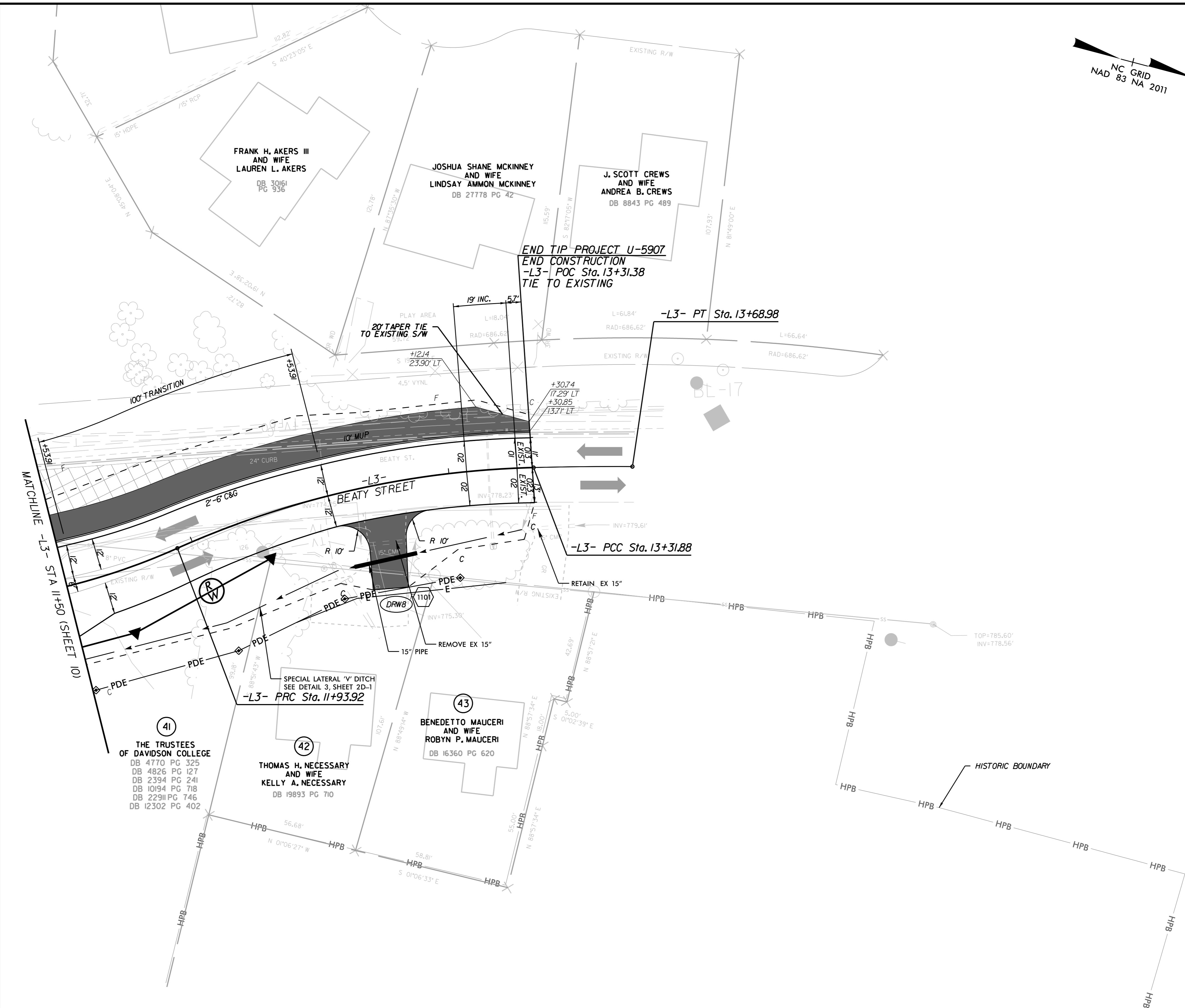
10/9/2023

Kimley»Horn

200 SOUTH TRYON, SUITE 200
CHARLOTTE, N.C. 28202



PROJECT REFERENCE NO. U-5907	SHEET NO. 11
RW SHEET NO.	
ROADWAY DESIGN ENGINEER	HYDRAULICS ENGINEER
DocuSigned by: Frank Masterson 10/25/2023	DocuSigned by: Jason Lewis 10/26/2023
DOCUMENT NOT CONSIDERED FINAL UNLESS ALL SIGNATURES COMPLETED	



END TIP PROJECT U-5907
END CONSTRUCTION
 -L3- POC Sta. 13+31.38
 TIE TO EXISTING

-L3- PT Sta. 13+68.98

-L3- PCC Sta. 13+31.88

-L3- PRC Sta. 11+93.92

-L3- BEATY STREET

PI Sta 12+63.81	PI Sta 13+50.43
$\Delta = 22^\circ 35' 05.0''$ (RT)	$\Delta = 1^\circ 46' 17.6''$ (RT)
D = 16' 22' 12.8"	D = 4' 46' 32.3"
L = 137.96'	L = 37.10'
T = 69.89'	T = 18.55'
R = 350.00'	R = 1,99.75'
SE = NC	SE = NC
DS = 30 MPH	DS = 30 MPH

PROPOSED DRIVEWAYS, MONOLITHIC ISLAND, AND SIDEWALK

RADI DIMENSIONS ARE TO THE EDGE OF PAVEMENT UNLESS OTHERWISE NOTED

SEE SHEET 15 FOR -L3- PROFILE