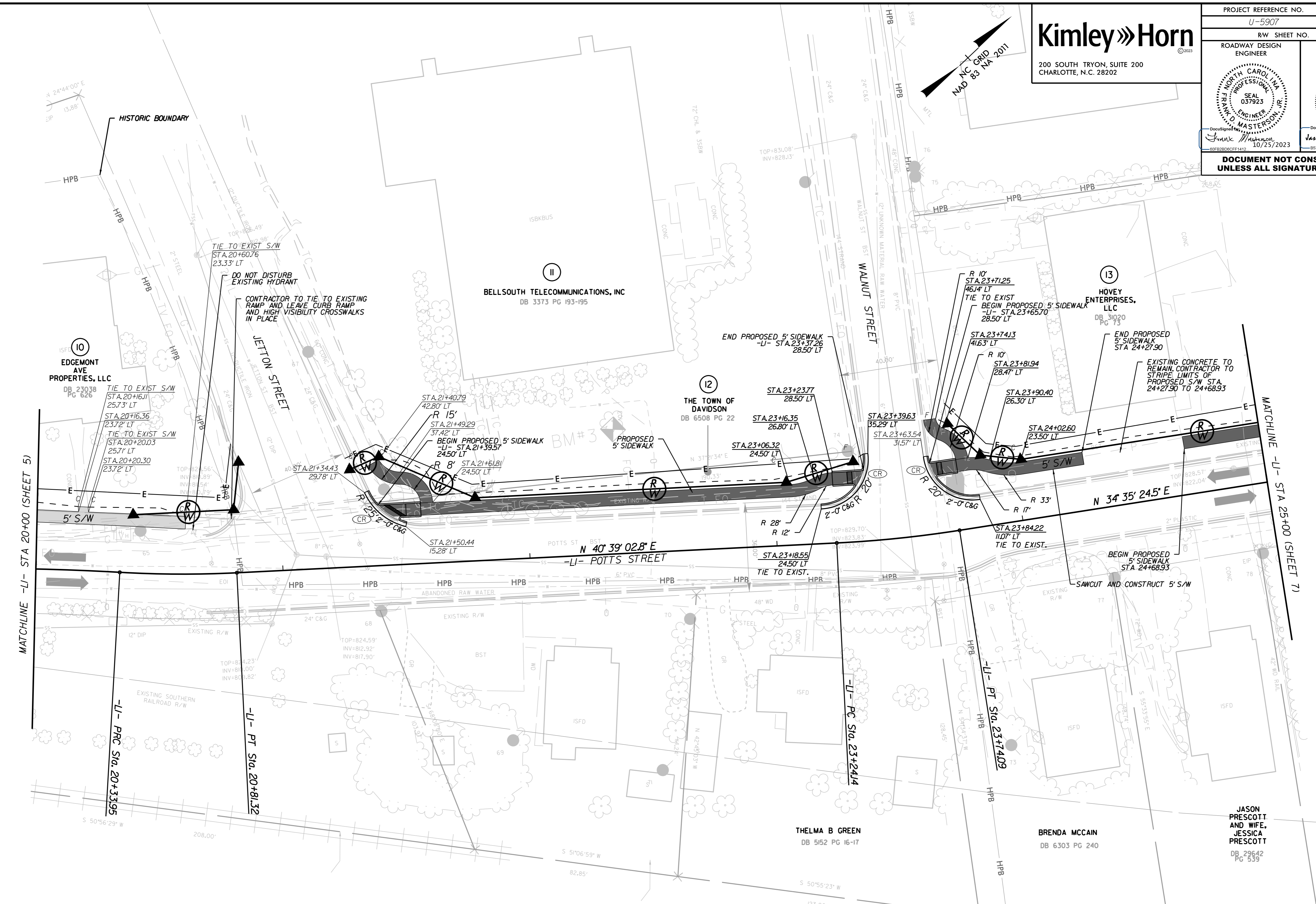


PROJECT REFERENCE NO. U-5907	SHEET NO. 6
RW SHEET NO.	
ROADWAY DESIGN ENGINEER	HYDRAULICS ENGINEER
DOCUMENT NOT CONSIDERED FINAL UNLESS ALL SIGNATURES COMPLETED	



-LI- POTTS STREET		
PI Sta 19+96.42	PI Sta 20+57.65	PI Sta 23+49.14
$\Delta = 4' 18'' 07.9''$ (RT)	$\Delta = 6' 05'' 57.0''$ (LT)	$\Delta = 6' 03'' 38.3''$ (LT)
$D = 5' 43'' 46.5''$	$D = 12' 52'' 31.6''$	$D = 12' 07'' 57.4''$
$L = 75.09'$	$L = 47.37'$	$L = 49.95'$
$T = 37.56'$	$T = 23.71'$	$T = 25.00'$
$R = 1,000.00'$	$R = 445.00'$	$R = 472.25'$

- PROPOSED SIDEWALK
- REMOVE AND REPLACE EXISTING SIDEWALK

RADI DIMENSIONS ARE TO THE EDGE OF PAVEMENT UNLESS OTHERWISE NOTED
 -LI- PROFILE MATCHES EXISTING PROFILE
 SEE SHEET 14 FOR -LI- PROFILE