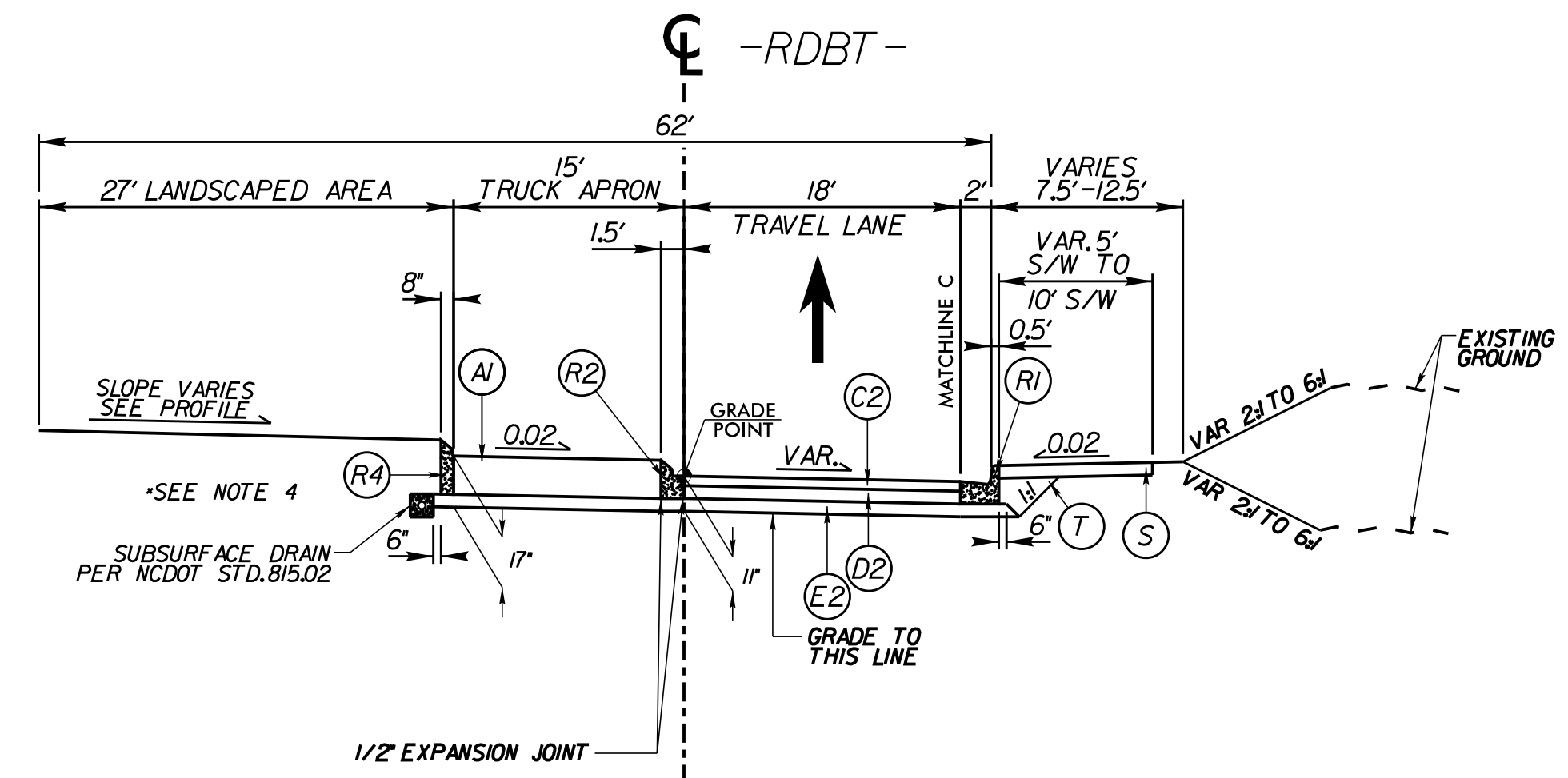
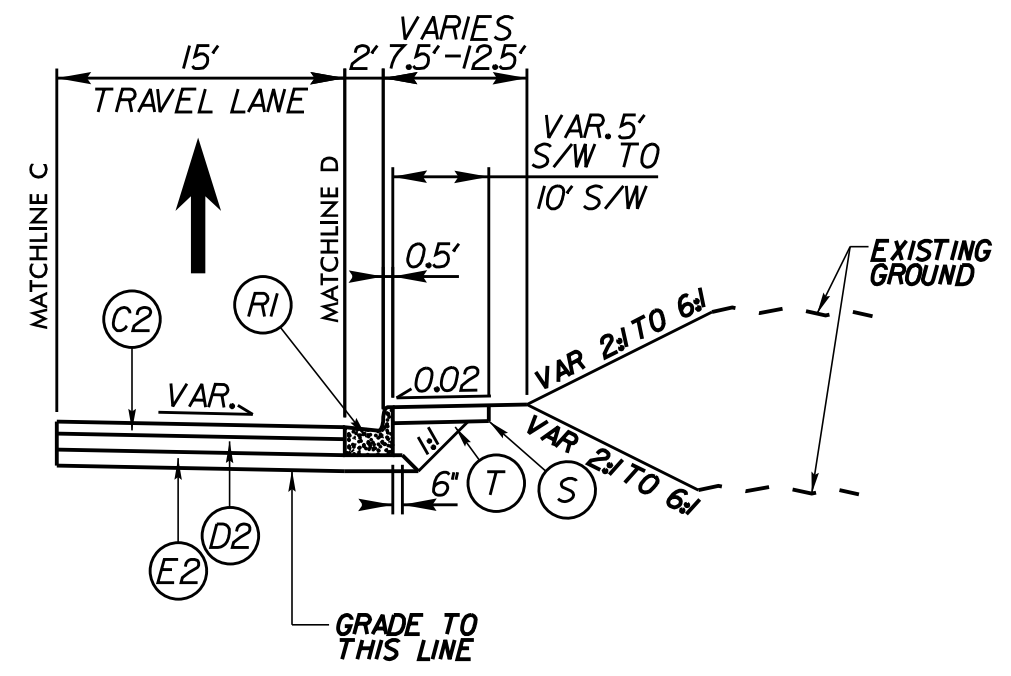


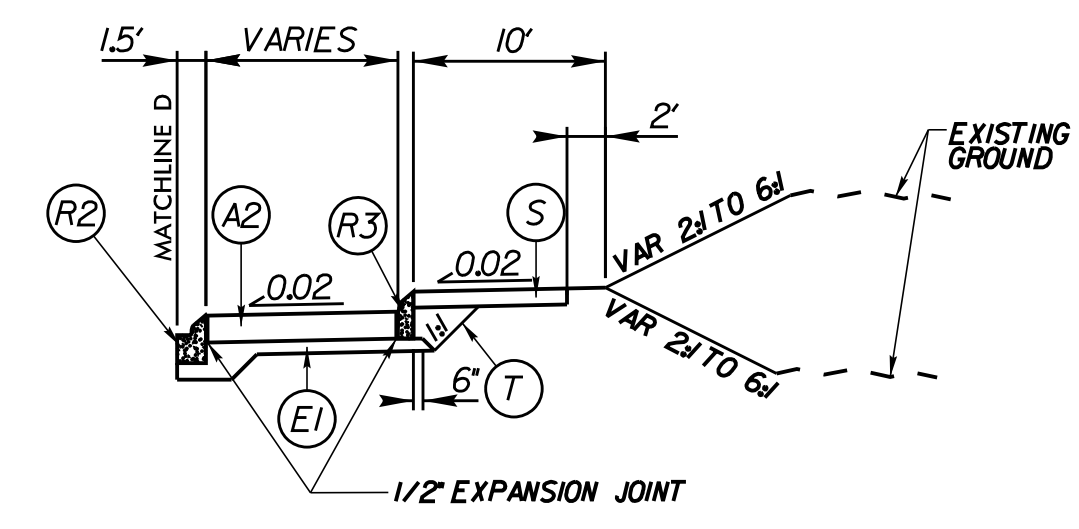
DOCUMENT NOT CONSIDERED FINAL UNLESS ALL SIGNATURES COMPLETED



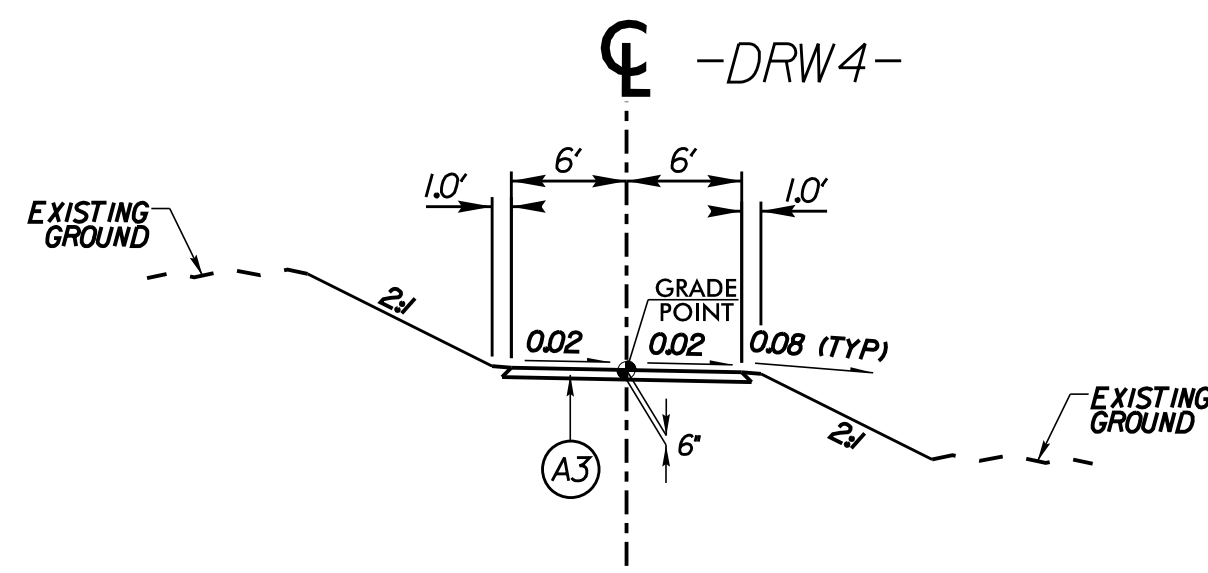
TYPICAL SECTION NO. 15
-RDBT- STA 10+00.00 TO STA 12+63.89



TYPICAL SECTION NO. 15A
-RDBT- STA 10+30.00 TO STA 11+00.00



TYPICAL SECTION NO. 15B
-CURB 1B- STA 11+43.08 TO STA 12+14.73
-CURB 1C- STA 10+52.07 TO STA 11+54.74



TYPICAL SECTION NO. 16
-DRW4- STA 10+13.00 TO STA 10+50.13

PAVEMENT SCHEDULE (FINAL PAVEMENT DESIGN)	
A1	1/2" TRUCK MOUNTABLE CONCRETE APRON (CLASS AA)
A2	1/2" TRUCK MOUNTABLE CONCRETE APRON, W/ BLACK TINT (CLASS AA)
A3	PROPOSED 6" PORTLAND CEMENT CONCRETE PAVEMENT, CLASS B
C1	15' S9.5B
C2	30' S9.5B
C3	VAR. DEPTH S9.5B
D1	2.5' 119DC
D2	4' 119DC
D3	VAR. DEPTH 119DC
E1	40' B25DC
E2	50' B25DC
E3	VAR. DEPTH B25DC
R1	2'-6" CONCRETE CURB & GUTTER
R2	1'-6" CONCRETE CURB & GUTTER
R3	8" x 12" CURB
R4	8" x 18" CURB
R5	5' MONO-ISLAND (KEYED-IN)
S	4" CONCRETE SIDEWALK
T	EARTH MATERIAL
U	EXISTING PAVEMENT
V1	INCIDENTAL MILLING
V2	PROPOSED 15" MILLING
W	WEDGING

NOTES:
1. PAVEMENT EDGE SLOPES ARE 1:1 UNLESS OTHERWISE INDICATED
2. REFER TO PLAN SHEETS FOR VARIABLE WIDTHS
3. SAWCUT AND REMOVE EXISTING ASPHALT PAVEMENT TO PROVIDE 1" MIN FULL DEPTH ASPHALT PAVEMENT
4. UTILIZE WELDED WIRE MESH (6x6 W5xW5) IN ALL PROPOSED 1/2" TRUCK MOUNTABLE APRONS

SUBSURFACE DRAINS SUMMARY

ALIGNMENT	STATION	STATION	LOCATION	CYCL
-RDBT-	10 + 00.00	12 + 63.89	LT	350
TOTAL:				3350
SAY:				350