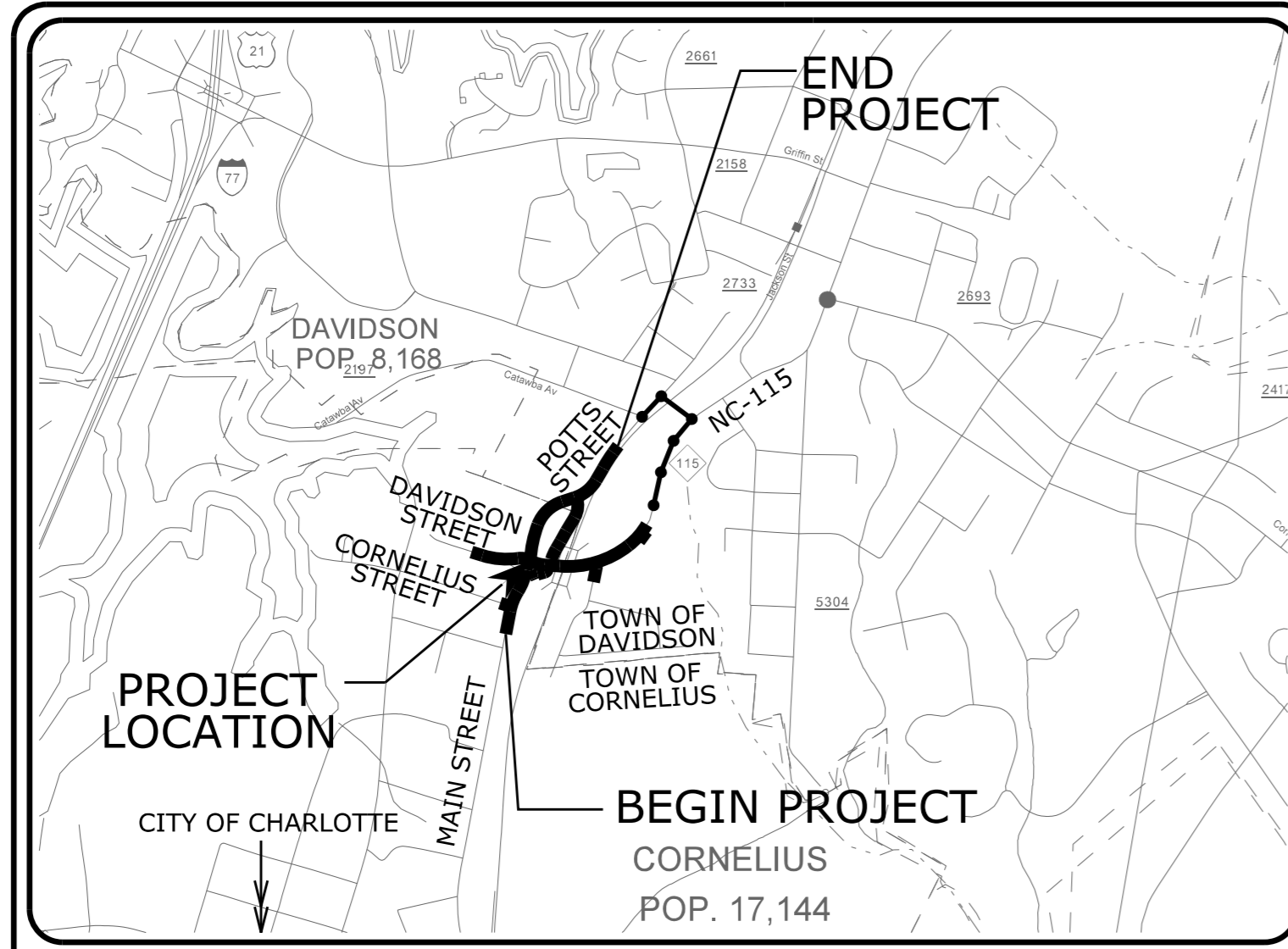


TIP PROJECT: U-5873

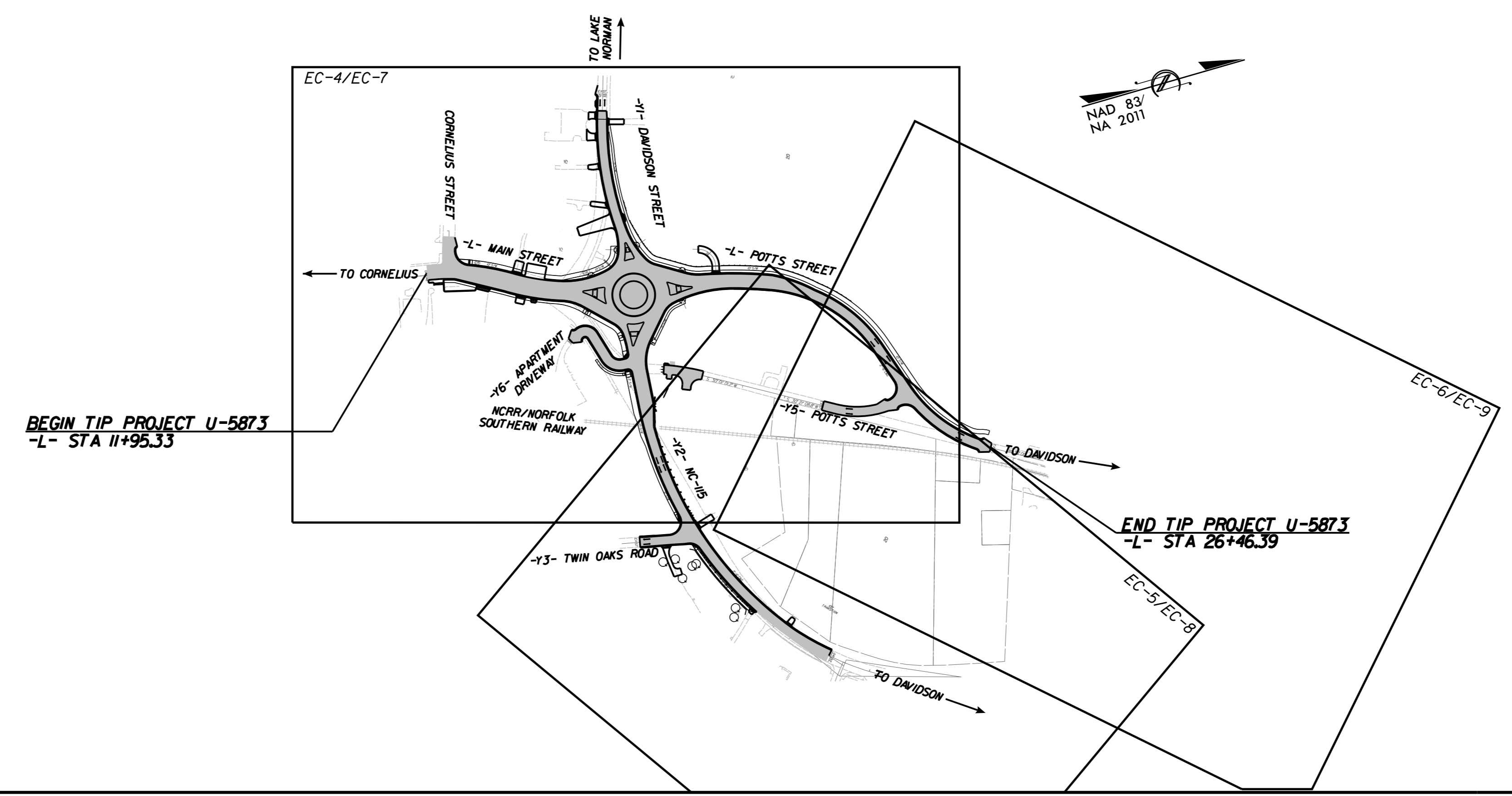


VICINITY MAP
NOT TO SCALE

STATE OF NORTH CAROLINA
DIVISION OF HIGHWAYS
PLAN FOR PROPOSED
HIGHWAY EROSION CONTROL
MECKLENBURG COUNTY

LOCATION: INTERSECTION OF NC 115 /MAIN STREET AND POTTS STREET

TYPE OF WORK: GRADING, DRAINAGE, PAVING, AND CULVERTS



EROSION AND SEDIMENT CONTROL MEASURES

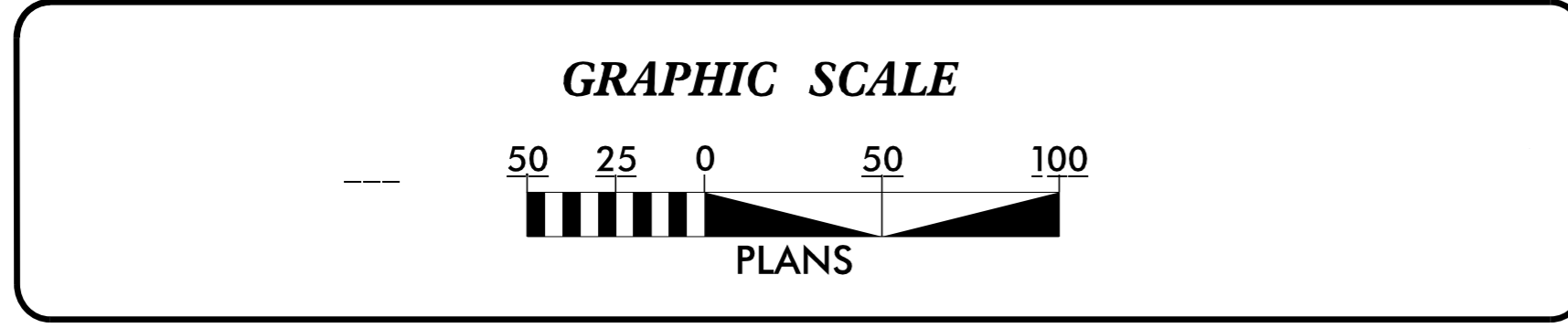
Std. #	Description	Symbol
1630.03	Temporary Silt Ditch.....	TSO
1630.05	Temporary Diversion.....	TD
1605.01	Temporary Silt Fence.....	III III III
1606.01	Special Sediment Control Fence.....	III III III
1622.01	Temporary Berms and Slope Drains.....	T
1630.02	Silt Basin Type B.....	Silt Basin Symbol
1633.01	Temporary Rock Silt Check Type-A.....	Rock Silt Check Symbol
	Temporary Rock Silt Check Type-A with Matting and Polyacrylamide (PAM).....	Rock Silt Check Symbol
1633.02	Temporary Rock Silt Check Type-B.....	Rock Silt Check Symbol
	Wattle/Coir Fiber Wattle.....	Wattle Symbol
	Wattle/Coir Fiber Wattle with Polyacrylamide (PAM).....	Wattle Symbol
1634.01	Temporary Rock Sediment Dam Type-A.....	Rock Sediment Dam Symbol
1634.02	Temporary Rock Sediment Dam Type-B.....	Rock Sediment Dam Symbol
1635.01	Rock Pipe Inlet Sediment Trap Type-A.....	Rock Pipe Inlet Symbol
1635.02	Rock Pipe Inlet Sediment Trap Type-B.....	Rock Pipe Inlet Symbol
1630.04	Stilling Basin.....	Stilling Basin Symbol
1630.06	Special Stilling Basin.....	Special Stilling Basin Symbol
	Rock Inlet Sediment Trap:	
1632.01	Type A.....	A
1632.02	Type B.....	B
1632.03	Type C.....	C
	Skimmer Basin.....	Skimmer Basin Symbol
	Tiered Skimmer Basin.....	Tiered Skimmer Basin Symbol
	Infiltration Basin.....	Infiltration Basin Symbol

THIS PROJECT CONTAINS
EROSION CONTROL PLANS
FOR CLEARING AND
GRUBBING PHASE OF
CONSTRUCTION.

THIS PROJECT HAS
BEEN DESIGNED TO
SENSITIVE WATERSHED
STANDARDS.

ENVIRONMENTALLY
SENSITIVE AREA(S) EXIST
ON THIS PROJECT

*Refer To E. C. Special Provisions
for Special Considerations.*



THESE EROSION AND SEDIMENT CONTROL PLANS COMPLY WITH THE APPLICABLE REGULATIONS SET FORTH BY THE NCG-01000 GENERAL CONSTRUCTION PERMIT EFFECTIVE APRIL 1, 2019 AND ISSUED BY THE NORTH CAROLINA DEPARTMENT OF ENVIRONMENTAL QUALITY DIVISION OF WATER RESOURCES.

Kimley»Horn
© 2023
NC LICENSE #P-4192
200 SOUTH TRYON STREET, SUITE 200
CHARLOTTE, NORTH CAROLINA 28202
PHONE: (704) 333-9131

Prepared in the Office of:
KIMLEY HORN
200 SOUTH TRYON STREET, SUITE 200
CHARLOTTE, NORTH CAROLINA 28202

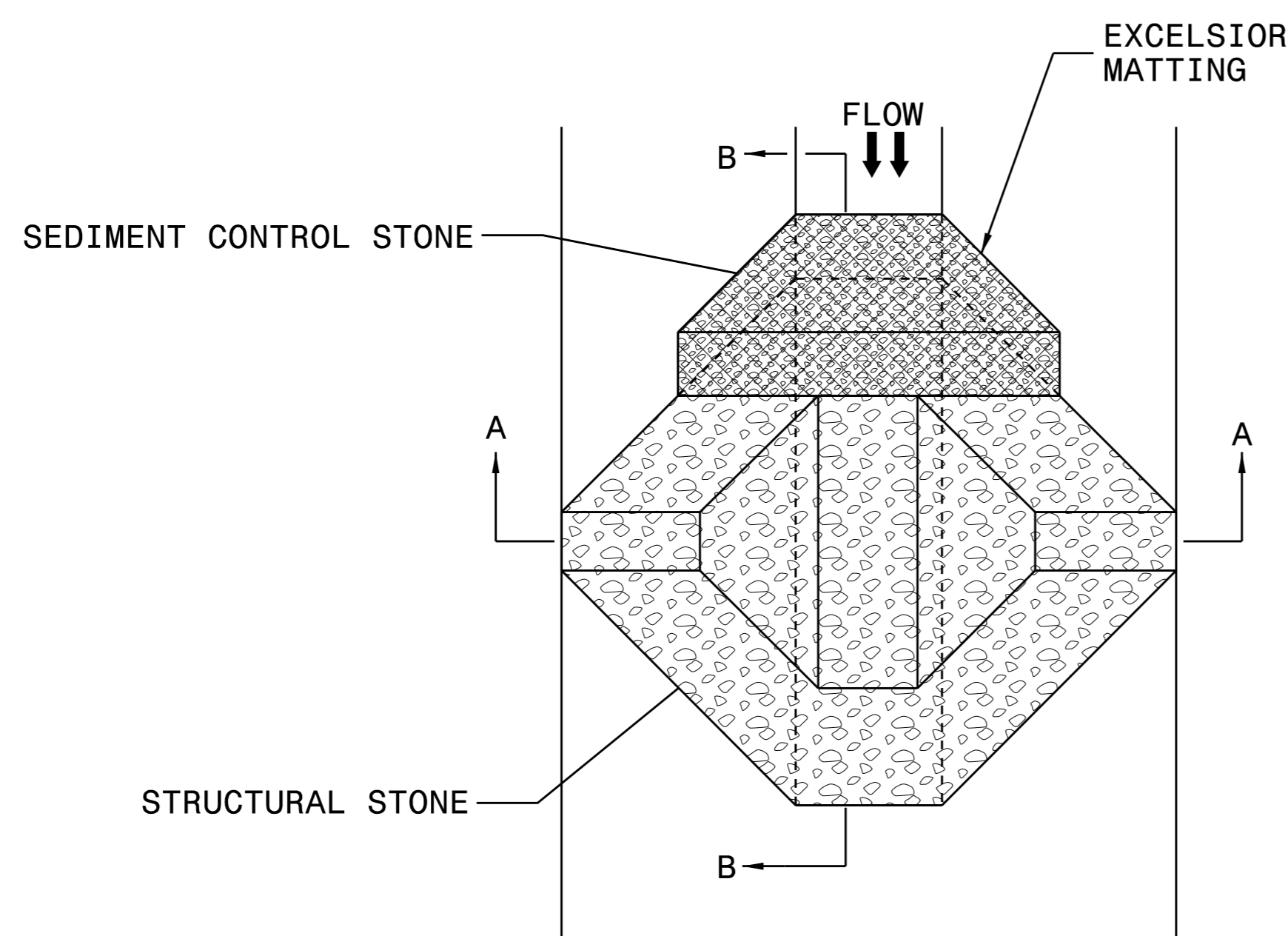
Designed by:
SPENCER GREEN, PE 4244
NAME LEVEL III CERTIFICATION NO.

Roadway Standard Drawings

The following roadway english standards as appear in "Roadway Standard Drawings"- Roadway Design Unit - N. C. Department of Transportation - Raleigh, N. C., dated January 2018 and the latest revision thereto are applicable to this project and by reference hereby are considered a part of these plans.

1604.01 Railroad Erosion Control Detail	1632.01 Rock Inlet Sediment Trap Type A
1605.01 Temporary Silt Fence	1632.02 Rock Inlet Sediment Trap Type B
1606.01 Special Sediment Control Fence	1632.03 Rock Inlet Sediment Trap Type C
1607.01 Gravel Construction Entrance	1633.01 Temporary Rock Silt Check Type A
1622.01 Temporary Berms and Slope Drains	1633.02 Temporary Rock Silt Check Type B
1630.01 Riser Basin	1634.01 Temporary Rock Sediment Dam Type A
1630.02 Silt Basin Type B	1634.02 Temporary Rock Sediment Dam Type B
1630.03 Temporary Silt Ditch	1635.01 Rock Pipe Inlet Sediment Trap Type A
1630.04 Stilling Basin	1635.02 Rock Pipe Inlet Sediment Trap Type B
1630.05 Temporary Diversion	1640.01 Coir Fiber Baffle
1630.06 Special Stilling Basin	1645.01 Temporary Stream Crossing
1631.01 Matting Installation	

TEMPORARY ROCK SILT CHECK TYPE 'A' WITH EXCELSIOR MATTING AND POLYACRYLAMIDE (PAM)



PLAN

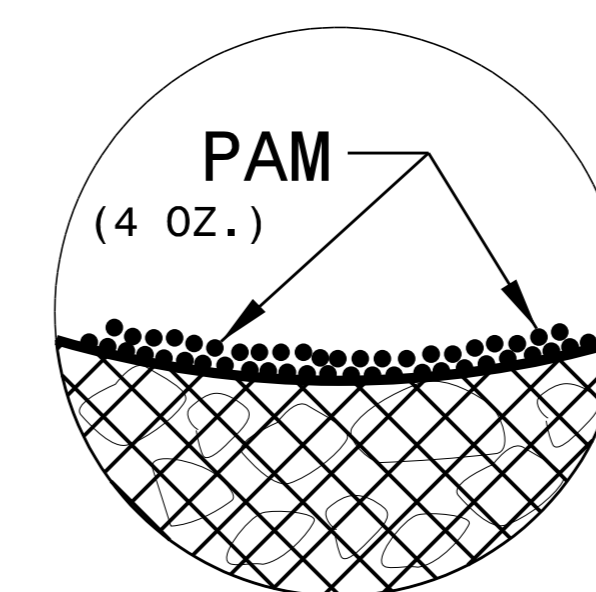
NOTES:

INSTALL TEMPORARY ROCK SILT CHECK TYPE A IN ACCORDANCE WITH ROADWAY STANDARD DRAWING NO. 1633.01.

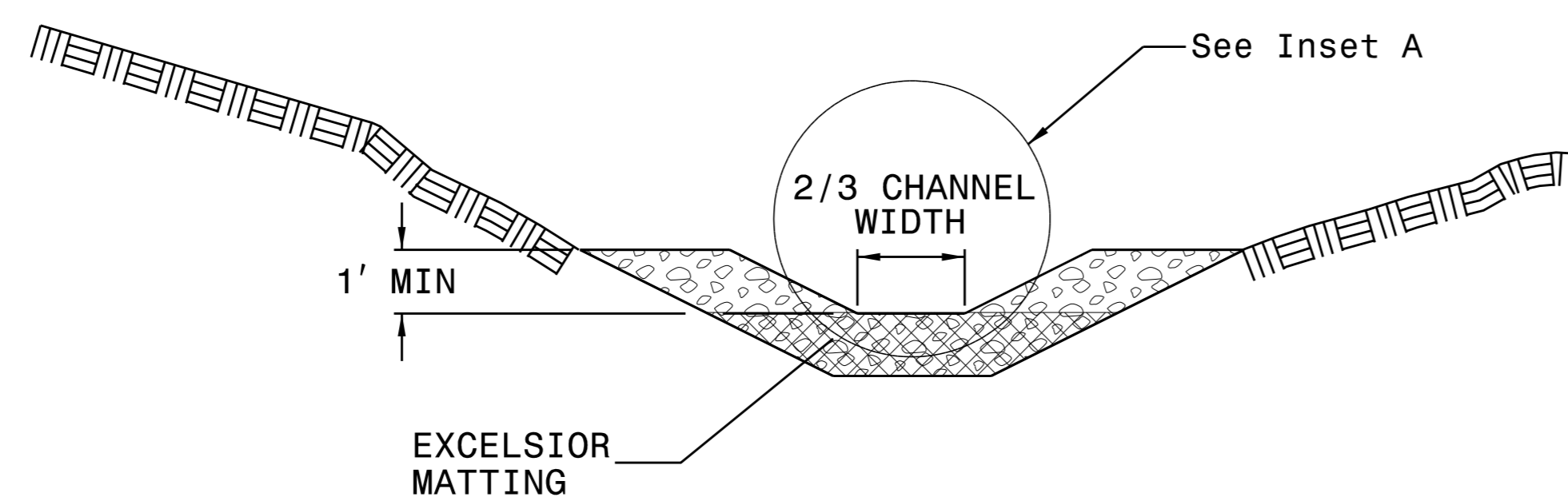
USE EXCELSIOR FOR MATTING MATERIAL AND ANCHOR MATTING SECTION AT TOP AND BOTTOM WITH CLASS B STONE.

PRIOR TO POLYACRYLAMIDE (PAM) APPLICATION, OBTAIN A SOIL SAMPLE FROM PROJECT LOCATION, AND FROM OFFSITE MATERIAL, AND ANALYZE FOR APPROPRIATE PAM FLOCCULANT TO BE APPLIED TO EACH ROCK SILT CHECK.

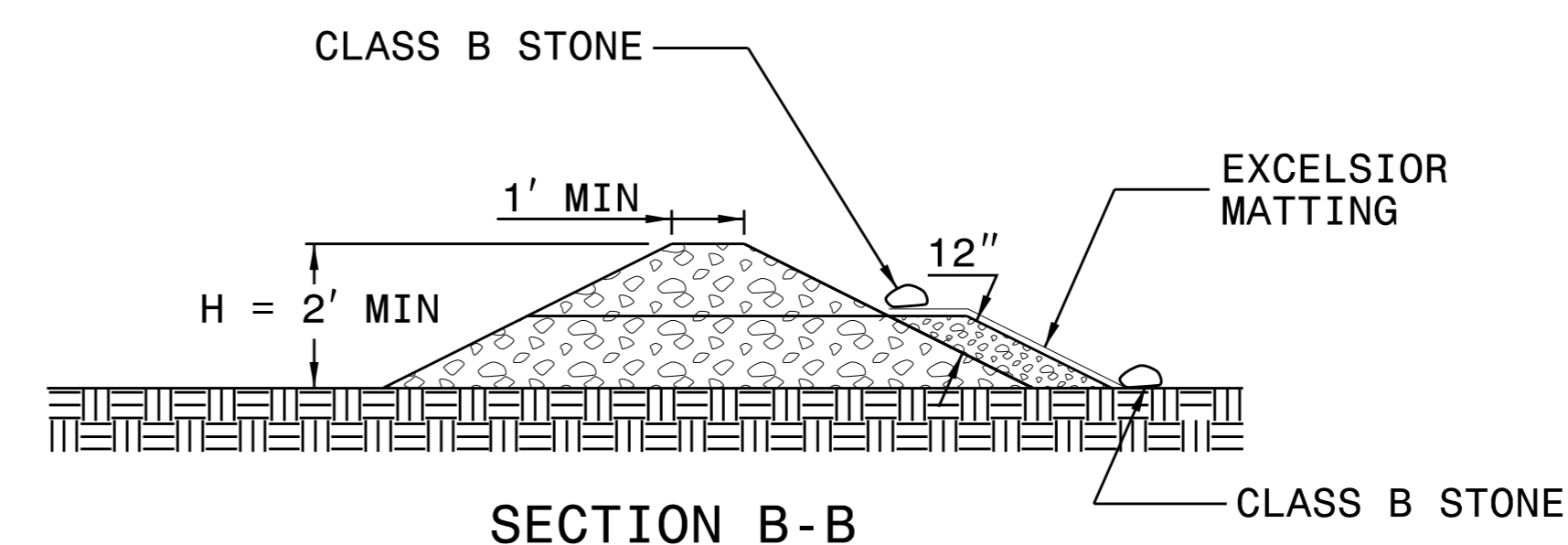
INITIALLY APPLY 4 OUNCES OF POLYACRYLAMIDE (PAM) TO TOP OF MATTING SECTION AND AFTER EVERY RAINFALL EVENT THAT EQUALS OR EXCEEDS 0.50 INCHES.



INSET A



SECTION A-A



SECTION B-B

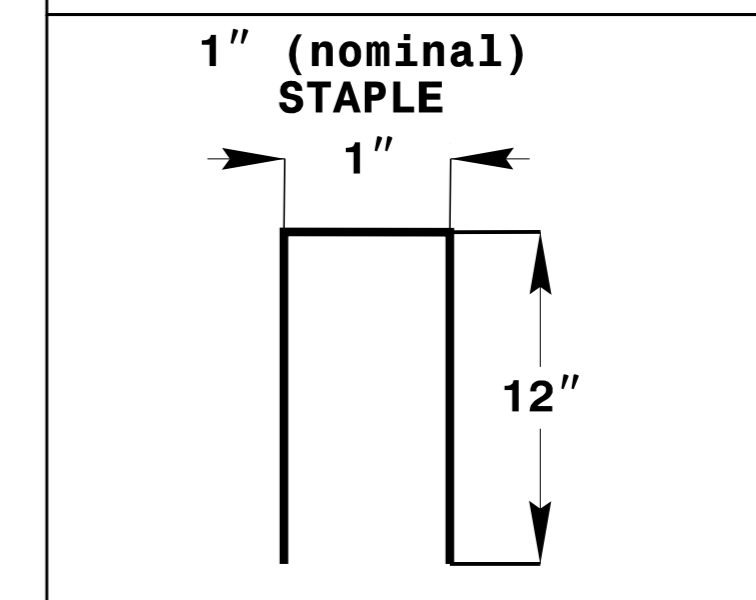
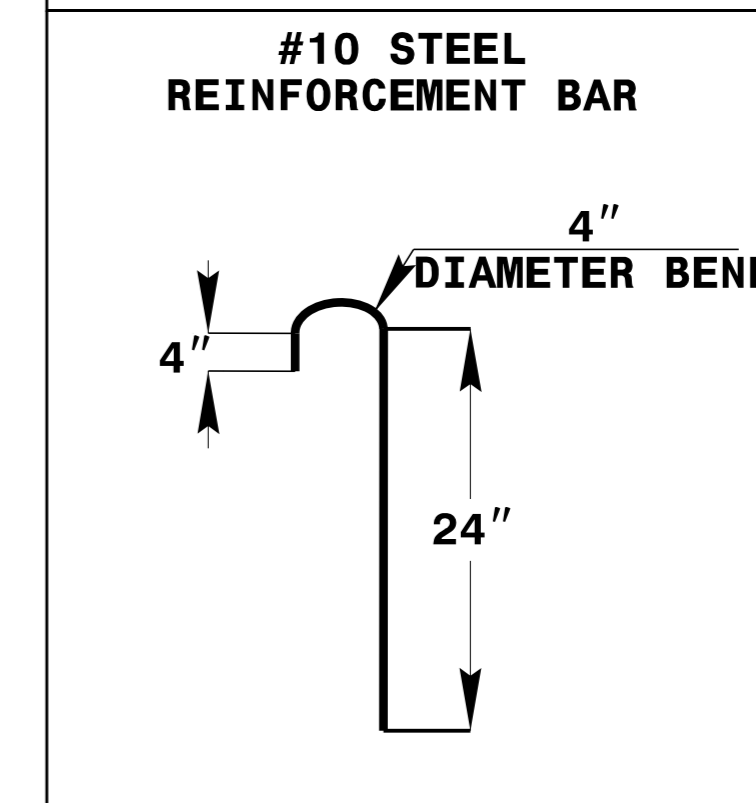
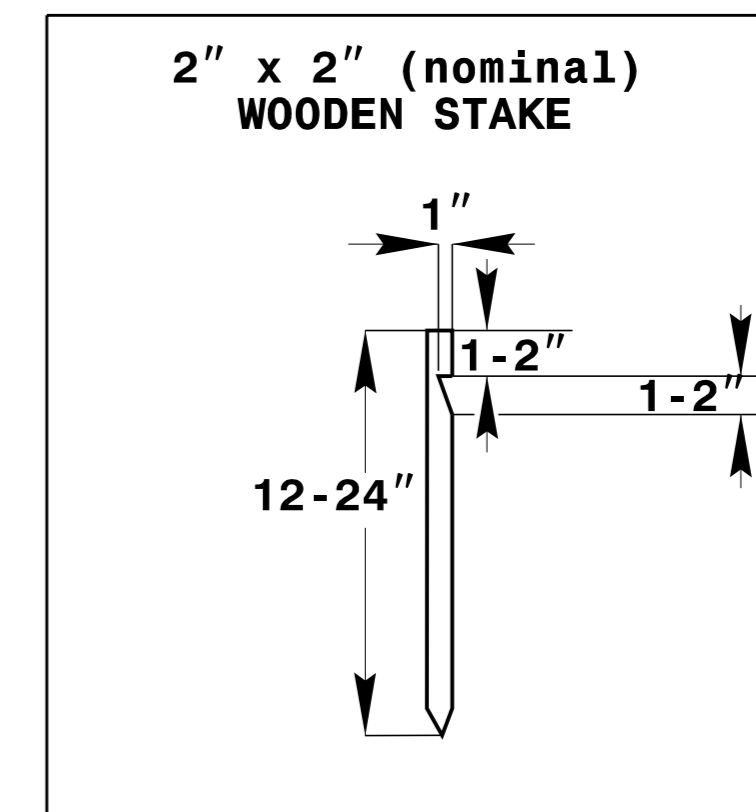
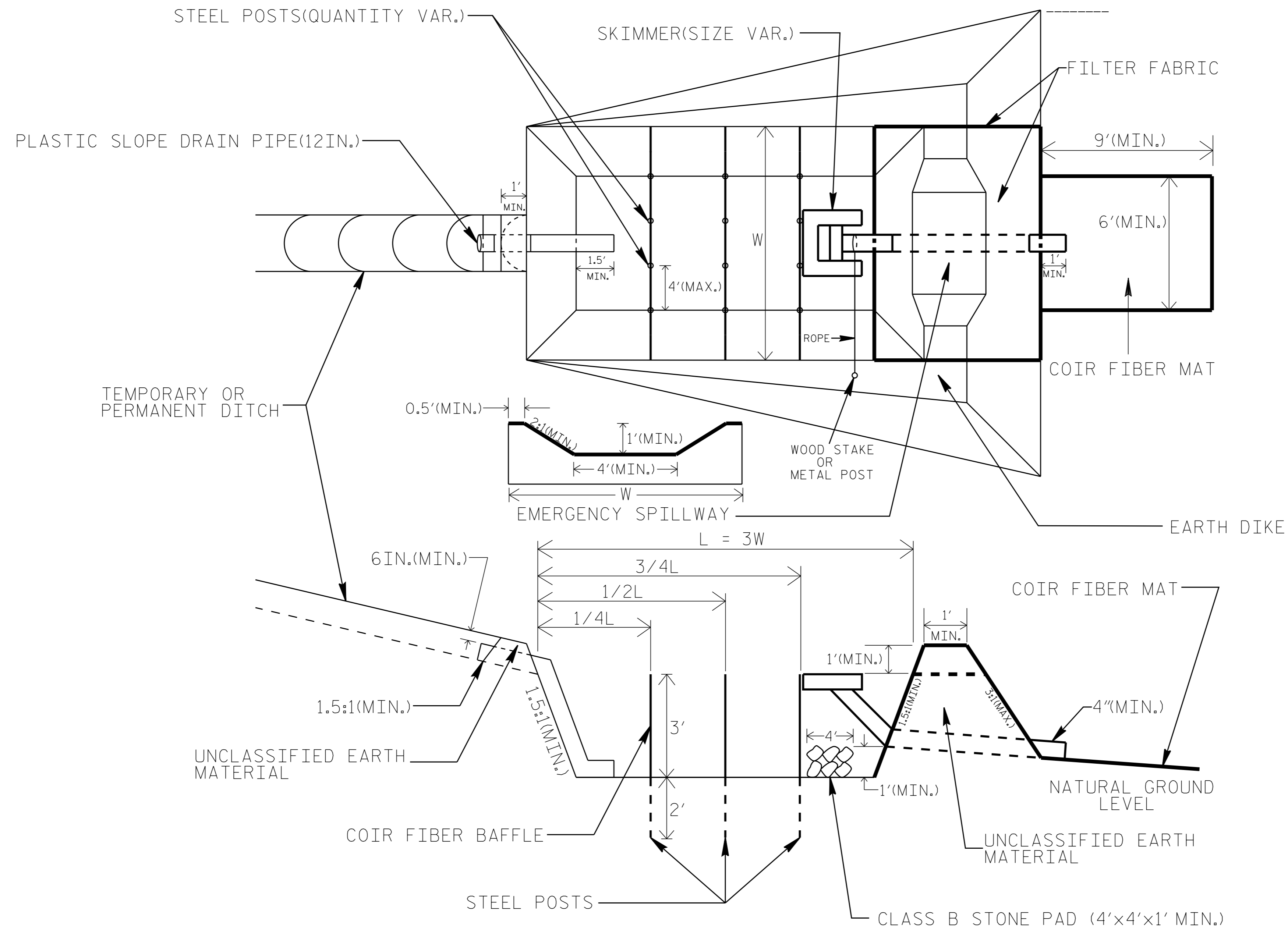
NOT TO SCALE

REVISIONS

5/14/99

9/8/2023

SKIMMER BASIN WITH BAFFLES DETAIL



COIR FIBER MAT ANCHOR OPTIONS

NOT TO SCALE

NOTES

1. SEED AND PLACE MATTING FOR EROSION CONTROL ON INTERIOR SIDESLOPES.
2. LIMIT EARTH DIKE HEIGHT TO 5 FT.
3. THE MINIMUM BASIN WIDTH SHALL BE 9 FT.
4. DETERMINE EMERGENCY SPILLWAY LENGTH (FT.) USING $Q/0.8$, WHERE Q IS FLOW RATE (CFS) INTO BASIN.

REVISIONS

5/14/99

9/8/2023

DIVISION OF HIGHWAYS
STATE OF NORTH CAROLINA

PROJECT REFERENCE NO. <i>U-5873</i>	SHEET NO. <i>EC-3</i>
Kimley»Horn	
NC LICENSE #F-0102 200 SOUTH TRYON, SUITE 200 CHARLOTTE, N.C. 28202	

SOIL STABILIZATION SUMMARY SHEET

MATTING FOR EROSION CONTROL

PSRM FOR EROSION CONTROL

CONST SHEET NO.	LINE	FROM STATION	TO STATION	SIDE	ESTIMATE (SY)
4	-Y1-	10+50	10+00	RT	50
4	-Y2-	14+50	14+00	LT	70
4	-Y2-	14+00	13+21	RT	115
5	-Y2-	16+50	15+85	LT	95
5	-Y2-	17+50	16+50	LT	140
5	-Y2-	18+50	17+50	LT	140
<i>SLOPES</i>					
7	-Y2-	11+50	13+00	LT	160
7	-L-	18+00	21+00	LT	740
DITCHES SUBTOTAL					
					610
SLOPES SUBTOTAL					
					900
MISCELLANEOUS MATTING TO BE INSTALLED AS DIRECTED BY THE ENGINEER					8515
TOTAL					10,025
SAY					10,100

CONST SHEET NO.	LINE	FROM STATION	TO STATION	SIDE	ESTIMATE (SY)
4	-Y1-	13+82	11+15	RT	265
4	-Y2-	11+81	12+72	LT	90
4	-Y2-	15+50	14+50	LT	140
SUBTOTAL					
					495
MISCELLANEOUS PSRM TO BE INSTALLED AS DIRECTED BY THE ENGINEER					50
TOTAL					545
SAY					600

REVISIONS

5/14/99

10/6/2023

DIVISION OF HIGHWAYS
STATE OF NORTH CAROLINA

SOIL STABILIZATION TIMEFRAMES

<i>SITE DESCRIPTION</i>	<i>STABILIZATION TIME</i>	<i>TIMEFRAME EXCEPTIONS</i>
PERIMETER DIKES, SWALES, DITCHES AND SLOPES	7 DAYS	NONE
HIGH QUALITY WATER (HQW) ZONES	7 DAYS	NONE
SLOPES STEEPER THAN 3:1	7 DAYS	IF SLOPES ARE 10' OR LESS IN LENGTH AND ARE NOT STEEPER THAN 2:1, 14 DAYS ARE ALLOWED.
SLOPES 3:1 OR FLATTER	14 DAYS	7 DAYS FOR SLOPES GREATER THAN 50' IN LENGTH.
ALL OTHER AREAS WITH SLOPES FLATTER THAN 4:1	14 DAYS	NONE, EXCEPT FOR PERIMETERS AND HQW ZONES.

REVISIONS

5/14/99

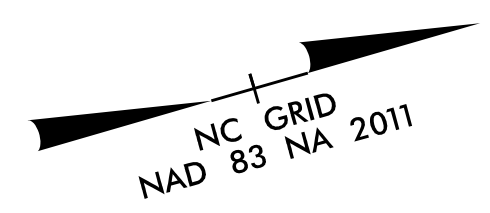
9/8/2023

5/14/99

9/8/2023

YOUNG MENS CHRISTIAN ASSOCIATION
OF CHARLOTTE AND MECKLENBURG
DB 4313 PG 155

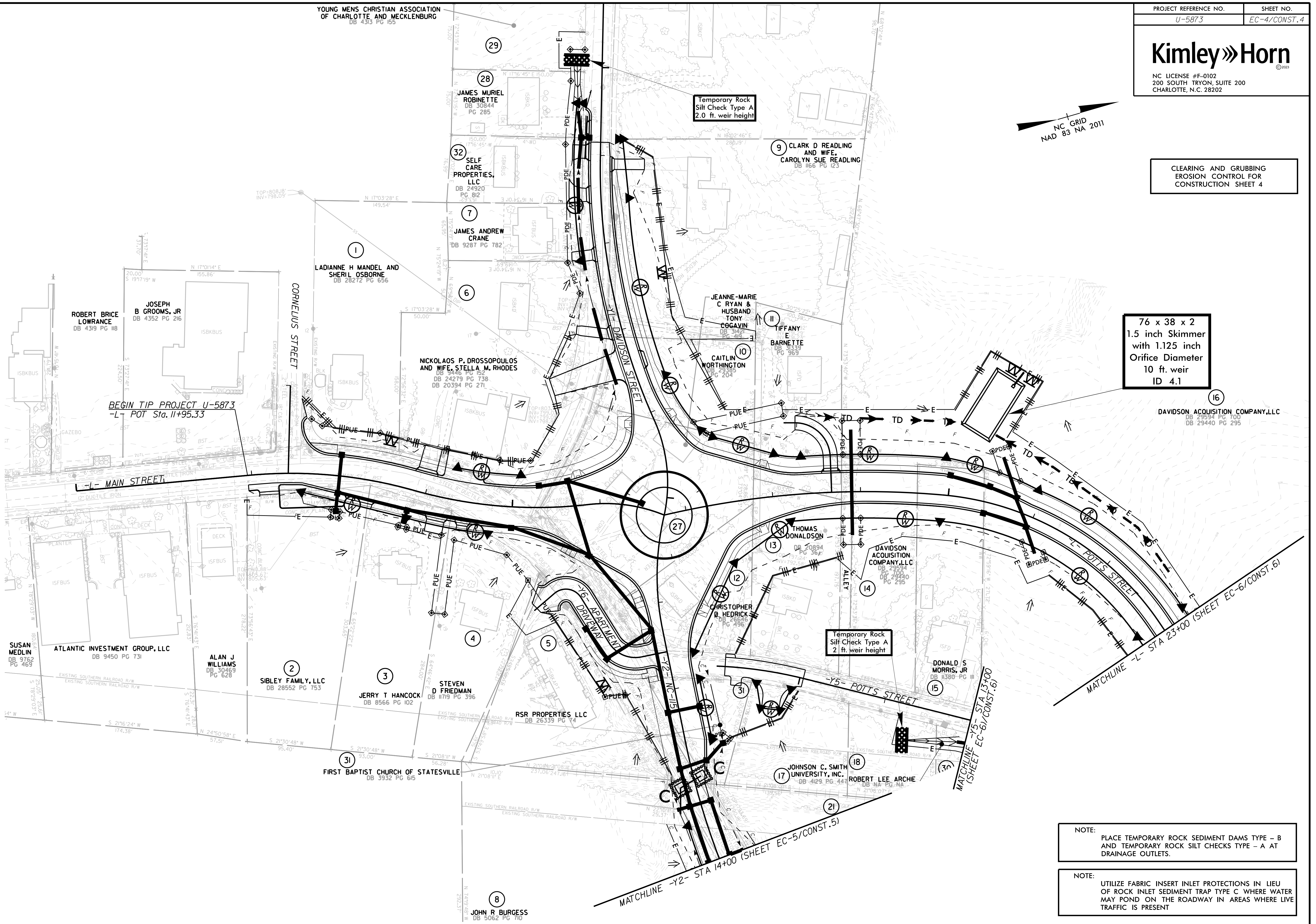
PROJECT REFERENCE NO.	SHEET NO.
U-5873	EC-4/CONST.4
Kimley»Horn	
NC LICENSE #F-0102 200 SOUTH TRYON, SUITE 200 CHARLOTTE, N.C. 28202	



CLEARING AND GRUBBING
EROSION CONTROL FOR
CONSTRUCTION SHEET 4

76 x 38 x 2
1.5 inch Skimmer
with 1.125 inch
Orifice Diameter
10 ft. weir
ID 4.1

REVISIONS



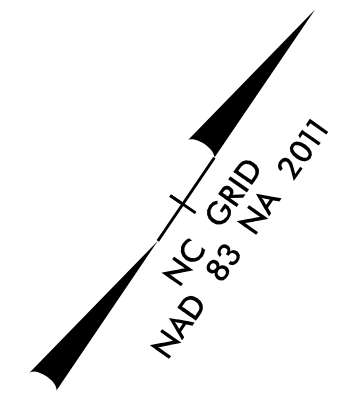
BEGIN TIP PROJECT U-5873
-L- POT Sta. 11+95.33

-L- MAIN STREET

MATCHLINE -Y2- STA 14+00 (SHEET EC-5/CONST.5)

MATCHLINE -Y5- STA 13+00 (SHEET EC-6/CONST.6)

MATCHLINE -L- STA 23+00 (SHEET EC-6/CONST.6)

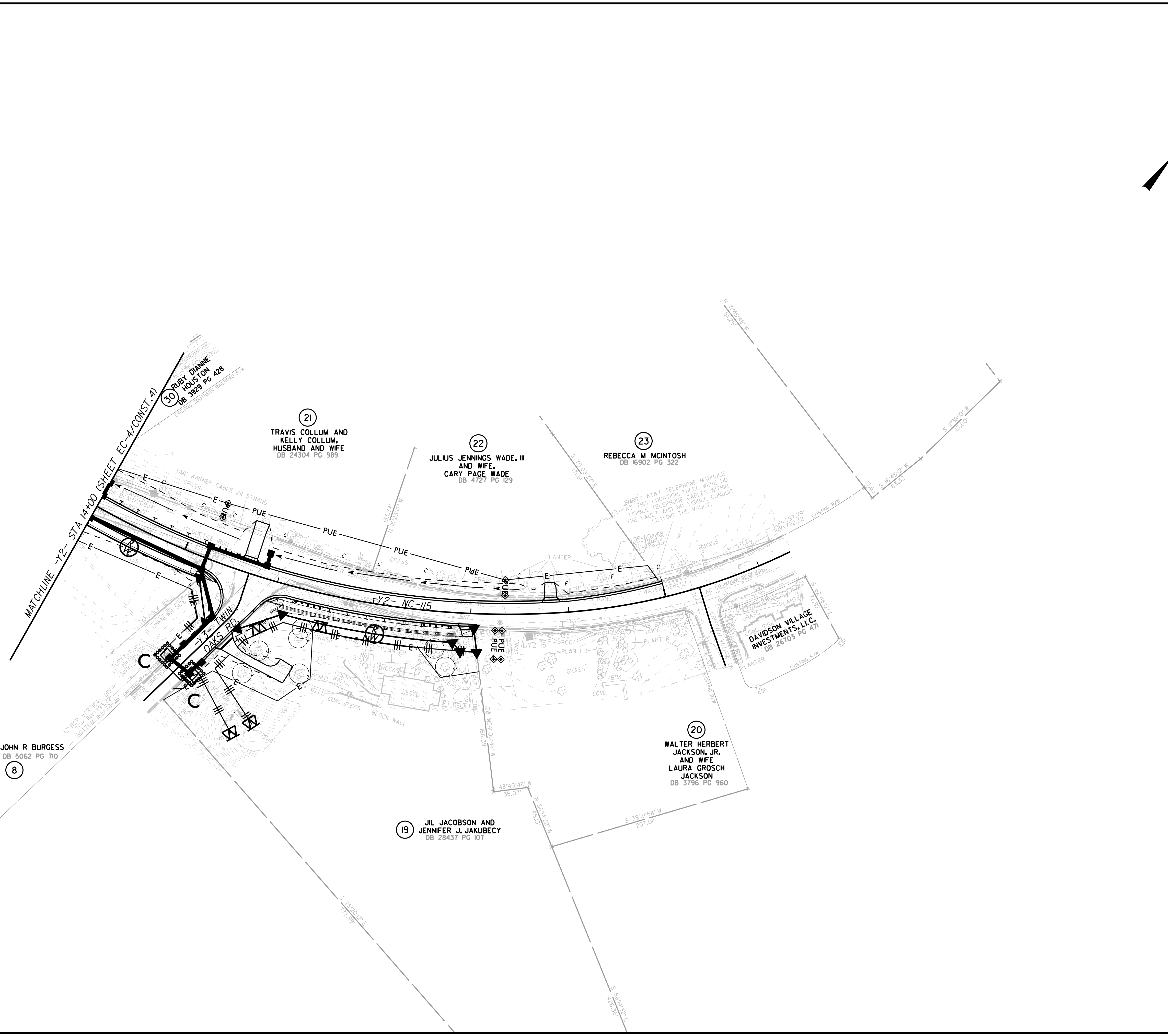


CLEARING AND GRUBBING
EROSION CONTROL FOR
CONSTRUCTION SHEET 5

REVISIONS

5/14/99

9/8/2023



NOTE:
PLACE TEMPORARY ROCK SEDIMENT DAMS TYPE - B
AND TEMPORARY ROCK SILT CHECKS TYPE - A AT
DRAINAGE OUTLETS.

NOTE:
UTILIZE FABRIC INSERT INLET PROTECTIONS IN LIEU
OF ROCK INLET SEDIMENT TRAP TYPE C WHERE WATER
MAY POND ON THE ROADWAY IN AREAS WHERE LIVE
TRAFFIC IS PRESENT

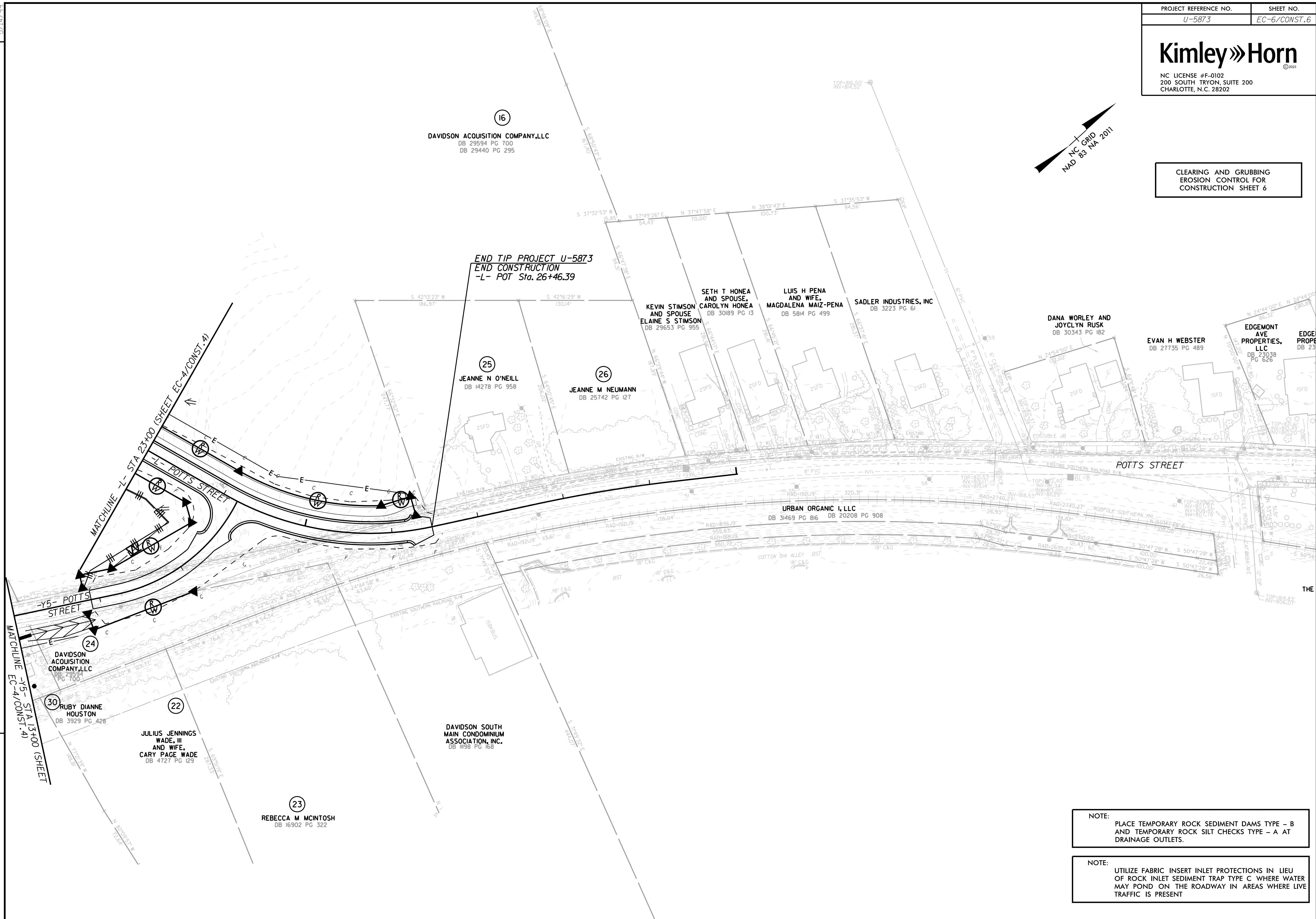


CLEARING AND GRUBBING
EROSION CONTROL FOR
CONSTRUCTION SHEET 6

REVISIONS

5/14/99

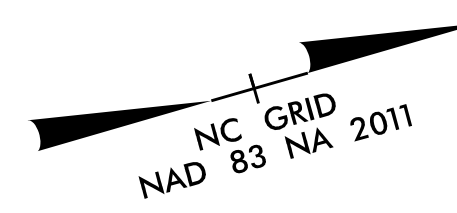
9/8/2023



END TIP PROJECT U-5873
END CONSTRUCTION
-L- POT Sta. 26+46.39

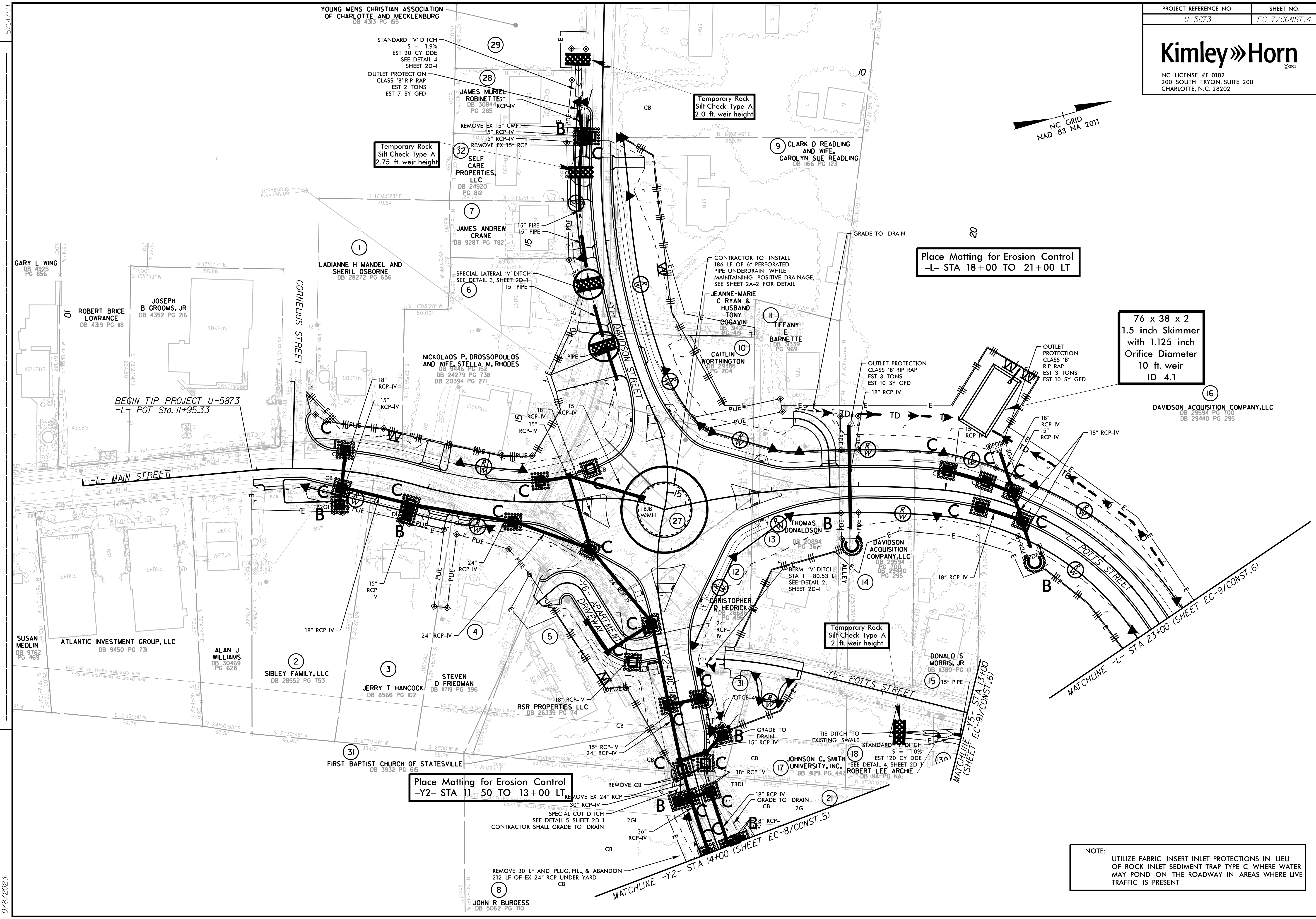
NOTE:
PLACE TEMPORARY ROCK SEDIMENT DAMS TYPE - B
AND TEMPORARY ROCK SILT CHECKS TYPE - A AT
DRAINAGE OUTLETS.

NOTE:
UTILIZE FABRIC INSERT INLET PROTECTIONS IN LIEU
OF ROCK INLET SEDIMENT TRAP TYPE C WHERE WATER
MAY POND ON THE ROADWAY IN AREAS WHERE LIVE
TRAFFIC IS PRESENT



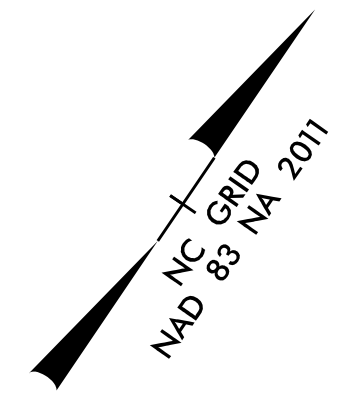
5/14/19

REVISIONS



NOTE:
UTILIZE FABRIC INSERT INLET PROTECTIONS IN LIEU OF ROCK INLET SEDIMENT TRAP TYPE C WHERE WATER MAY POND ON THE ROADWAY IN AREAS WHERE LIVE TRAFFIC IS PRESENT

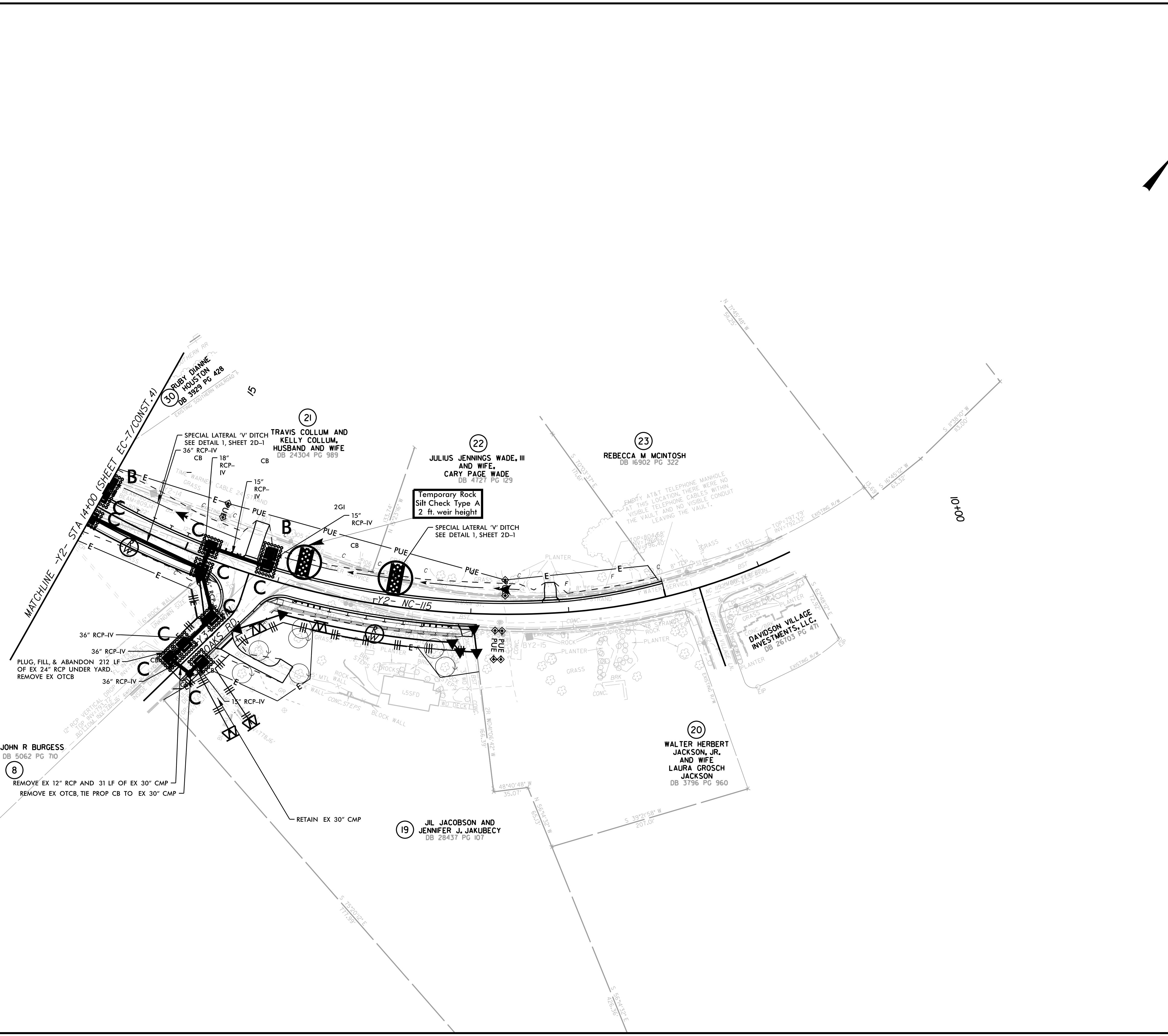
9/8/2023



REVISIONS

5/14/99

9/8/2023



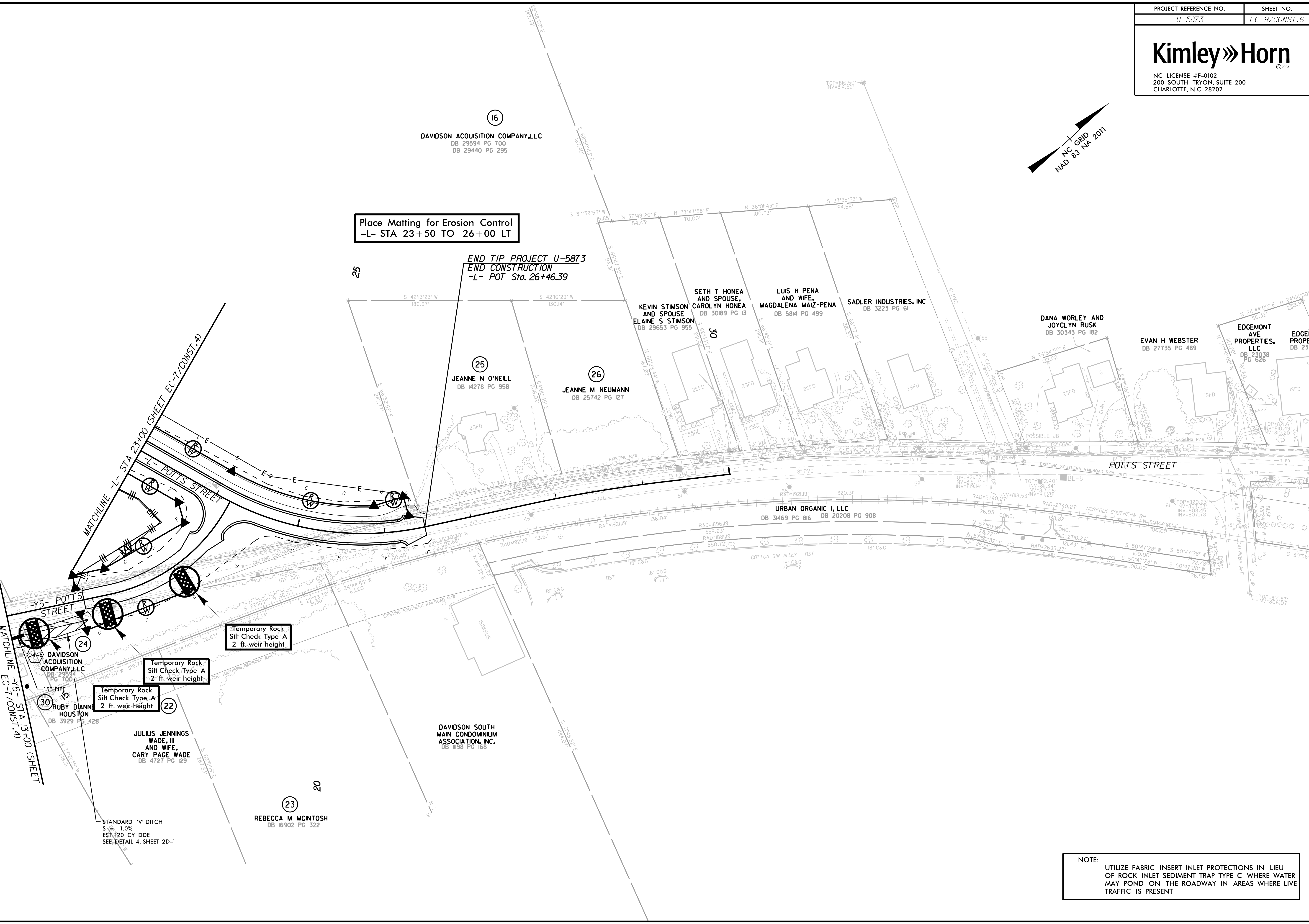
NOTE:
UTILIZE FABRIC INSERT INLET PROTECTIONS IN LIEU OF ROCK INLET SEDIMENT TRAP TYPE C WHERE WATER MAY POND ON THE ROADWAY IN AREAS WHERE LIVE TRAFFIC IS PRESENT



Place Matting for Erosion Control
 -L- STA 23+50 TO 26+00 LT

END TIP PROJECT U-5873
END CONSTRUCTION
 -L- POT Sta. 26+46.39

REVISIONS
 5/14/99
 9/8/2023



NOTE:
 UTILIZE FABRIC INSERT INLET PROTECTIONS IN LIEU OF ROCK INLET SEDIMENT TRAP TYPE C WHERE WATER MAY POND ON THE ROADWAY IN AREAS WHERE LIVE TRAFFIC IS PRESENT