

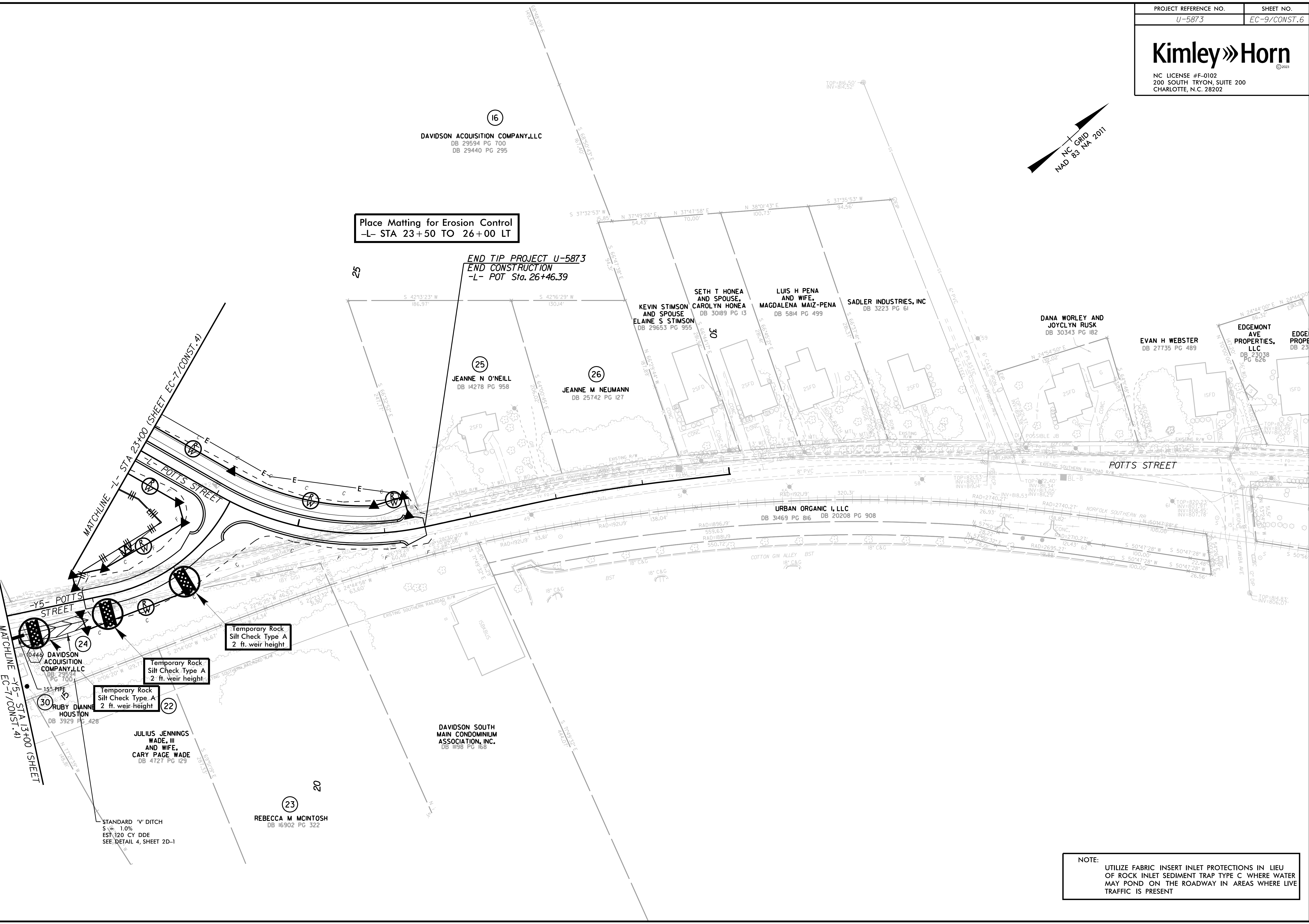
Place Matting for Erosion Control
 -L- STA 23+50 TO 26+00 LT

END TIP PROJECT U-5873
END CONSTRUCTION
 -L- POT Sta. 26+46.39

REVISIONS

5/14/99

9/8/2023



NOTE:
 UTILIZE FABRIC INSERT INLET PROTECTIONS IN LIEU OF ROCK INLET SEDIMENT TRAP TYPE C WHERE WATER MAY POND ON THE ROADWAY IN AREAS WHERE LIVE TRAFFIC IS PRESENT