

NOTES:

- 1. IF FURTHER INFORMATION REGARDING PROJECT CONTROL IS NEEDED, PLEASE CONTACT THE LOCATION AND SURVEYS UNIT.
- 2. PROJECT CONTROL WAS ESTABLISHED USING GNSS, THE GLOBAL NAVIGATION SATELLITE SYSTEM.

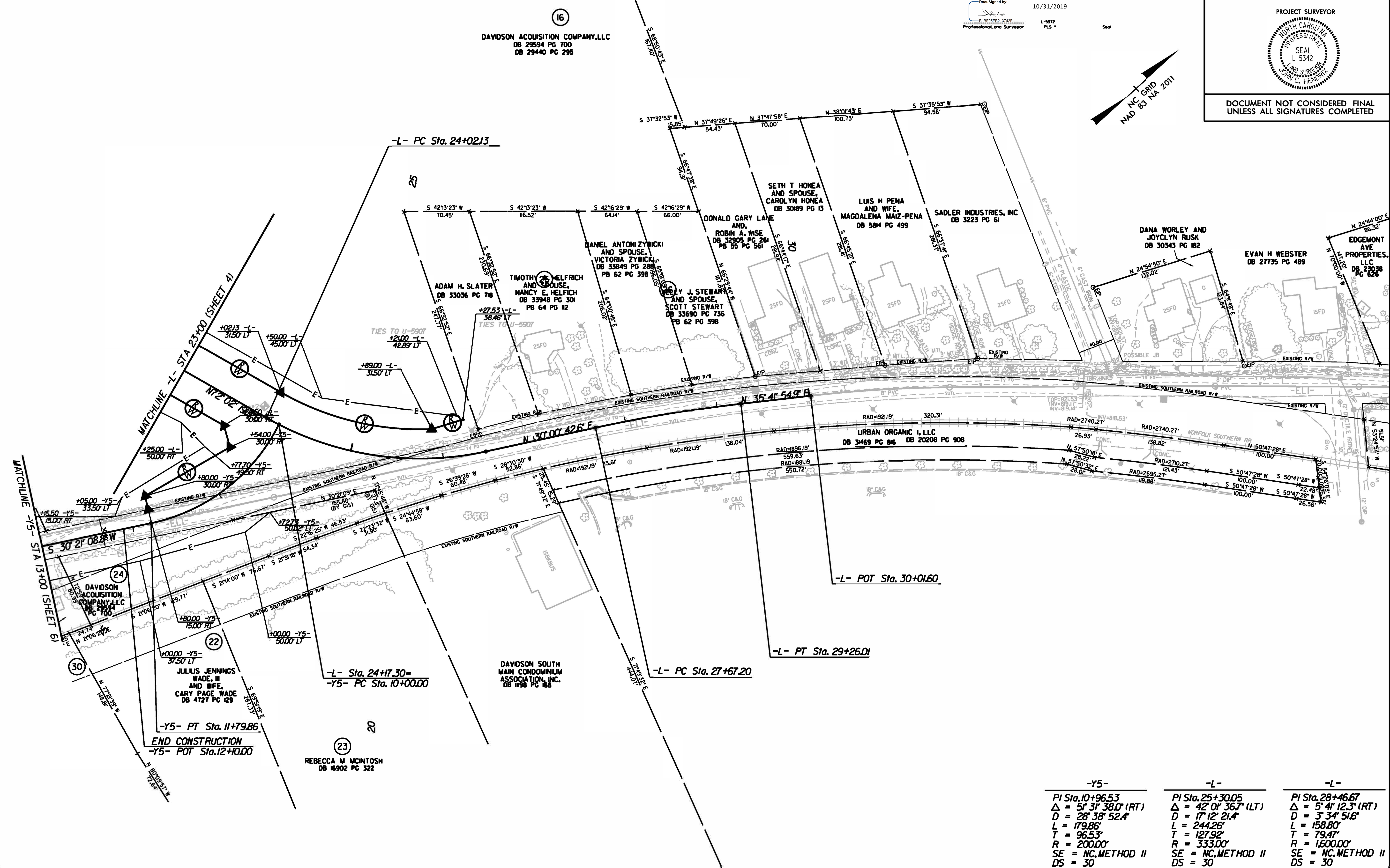
John C. Hendrix, a Professional Land Surveyor in the state of North Carolina hereby certifies to the best of my knowledge and belief that the foregoing is a true and correct copy of the original survey as shown on the attached map. I further certify that the data compiled came from reliable surveys/mapping performed by others and provided to me by MCDOT and do not certify to the accuracy or quality of the individual data sources.

I further certify that the right of way and permanent easement points shown herein and outlined in the tables shown herein located coordinates, station offsets have been checked and are accurate representations of the right of way and permanent easement points depicted on the corresponding Highway Plans. I also certify that the right of way and permanent easement points shown herein have been filed monumented under my supervision from existing survey control provided by others, that the depicted property data shown herein were surveyed by others and these monuments denote the right of way and easement boundaries of the site of the proposed project, which may be subject to change due to right of way revisions (see notes for final determination).

I witness my original signature, registration number and seal this 31st day of October, 2009.

Disciplined by: 10/31/2019
Professional Land Surveyor L-5372 PLS + Seal

PROJECT REFERENCE NO. U-5873	SHEET NO. RW06
Location and Surveys	
 PROJECT REFERENCE: B040480, SITE 10 CHARLOTTE, NC 28207 PHONE: 704.537.7300 CALYXengineers.com NC License # 1-1333	
PROJECT SURVEYOR	
DOCUMENT NOT CONSIDERED FINAL UNLESS ALL SIGNATURES COMPLETED	



-Y5-	-L-	-L-
PI Sta. 10+96.53	PI Sta. 25+30.05	PI Sta. 28+46.67
$\Delta = 51' 31'' 38.0''$ (RT)	$\Delta = 42' 01'' 36.7''$ (LT)	$\Delta = 5' 41'' 12.3''$ (RT)
D = 28' 38' 52.4"	D = 17' 12' 21.4"	D = 3' 34' 51.6"
L = 179.86'	L = 244.26'	L = 158.80'
T = 96.53'	T = 127.92'	T = 79.47'
R = 200.00'	R = 333.00'	R = 1600.00'
SE = NC.METHOD II	SE = NC.METHOD II	SE = NC.METHOD II
DS = 30	DS = 30	DS = 30

REVISIONS

25-OCT-2009 13:35
 P:\P-C\JCH\2009\20190115_68_SUR\Submit\U-5873.1.dwg
 P:\P-C\JCH\2009\20190115_68_SUR\Submit\U-5873.1.dwg
 P:\P-C\JCH\2009\20190115_68_SUR\Submit\U-5873.1.dwg
 P:\P-C\JCH\2009\20190115_68_SUR\Submit\U-5873.1.dwg