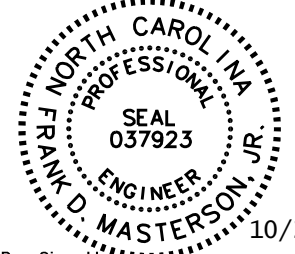

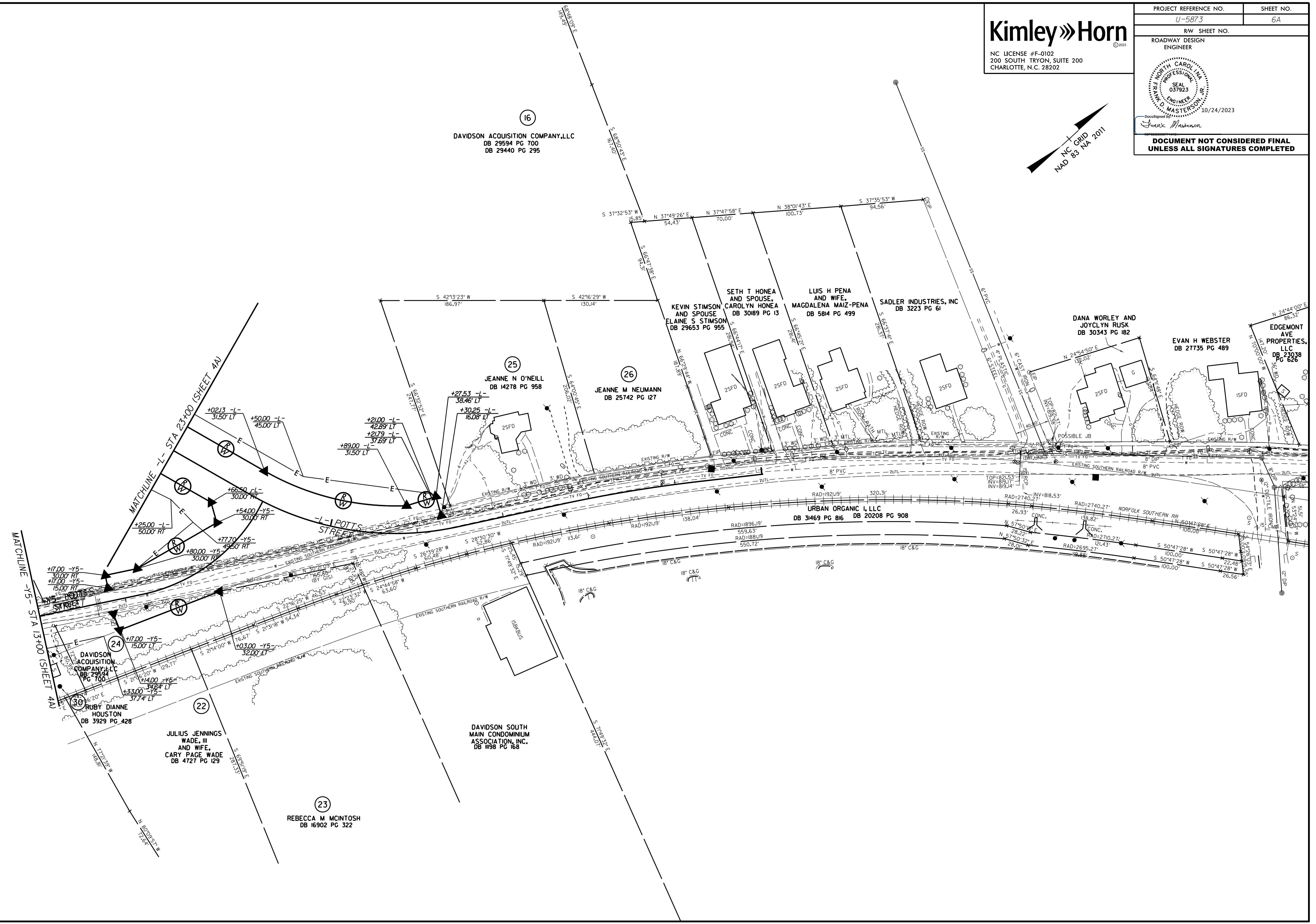
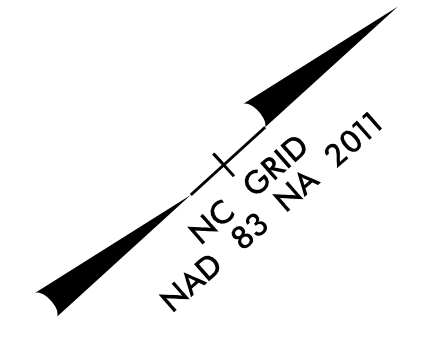


5/14/2023

Kimley»Horn

NC LICENSE #F-0102
200 SOUTH TRYON, SUITE 200
CHARLOTTE, N.C. 28202

PROJECT REFERENCE NO.	SHEET NO.
U-5873	6A
RW SHEET NO.	
ROADWAY DESIGN ENGINEER	
	
10/24/2023	
	
DOCUMENT NOT CONSIDERED FINAL UNLESS ALL SIGNATURES COMPLETED	



MATCHLINE -Y5- STA 13+00 (SHEET 4A)

MATCHLINE -L- STA 23+00 (SHEET 4A)

DAVIDSON ACQUISITION COMPANY, LLC
DB 29594 PG 700

RUBY DIANNE HOUSTON
DB 3929 PG 428

JULIUS JENNINGS WADE, III AND WIFE, CARY PAGE WADE
DB 4727 PG 129

16
DAVIDSON ACQUISITION COMPANY, LLC
DB 29594 PG 700
DB 29440 PG 295

25
JEANNE N O'NEILL
DB 14278 PG 958

26
JEANNE M NEUMANN
DB 25742 PG 127

KEVIN STIMSON AND SPOUSE
ELAINE S STIMSON
DB 29653 PG 955

SETH T HONEA AND SPOUSE,
CAROLYN HONEA
DB 30189 PG 13

LUIS H PENNA AND WIFE,
MAGDALENA MAIZ-PENA
DB 5814 PG 499

SADLER INDUSTRIES, INC
DB 3223 PG 61

DANA WORLEY AND JOYCLYN RUSK
DB 30343 PG 182

EVAN H WEBSTER
DB 27735 PG 489

EDGEMONT AVE PROPERTIES, LLC
DB 23038 PG 626

URBAN ORGANIC I, LLC
DB 31469 PG 816 DB 20208 PG 908

DAVIDSON SOUTH MAIN CONDOMINIUM ASSOCIATION, INC.
DB 1198 PG 168

23
REBECCA M MCINTOSH
DB 16902 PG 322