

5/14/99

# Kimley»Horn

NC LICENSE #F-0102  
200 SOUTH TRYON, SUITE 200  
CHARLOTTE, N.C. 28202

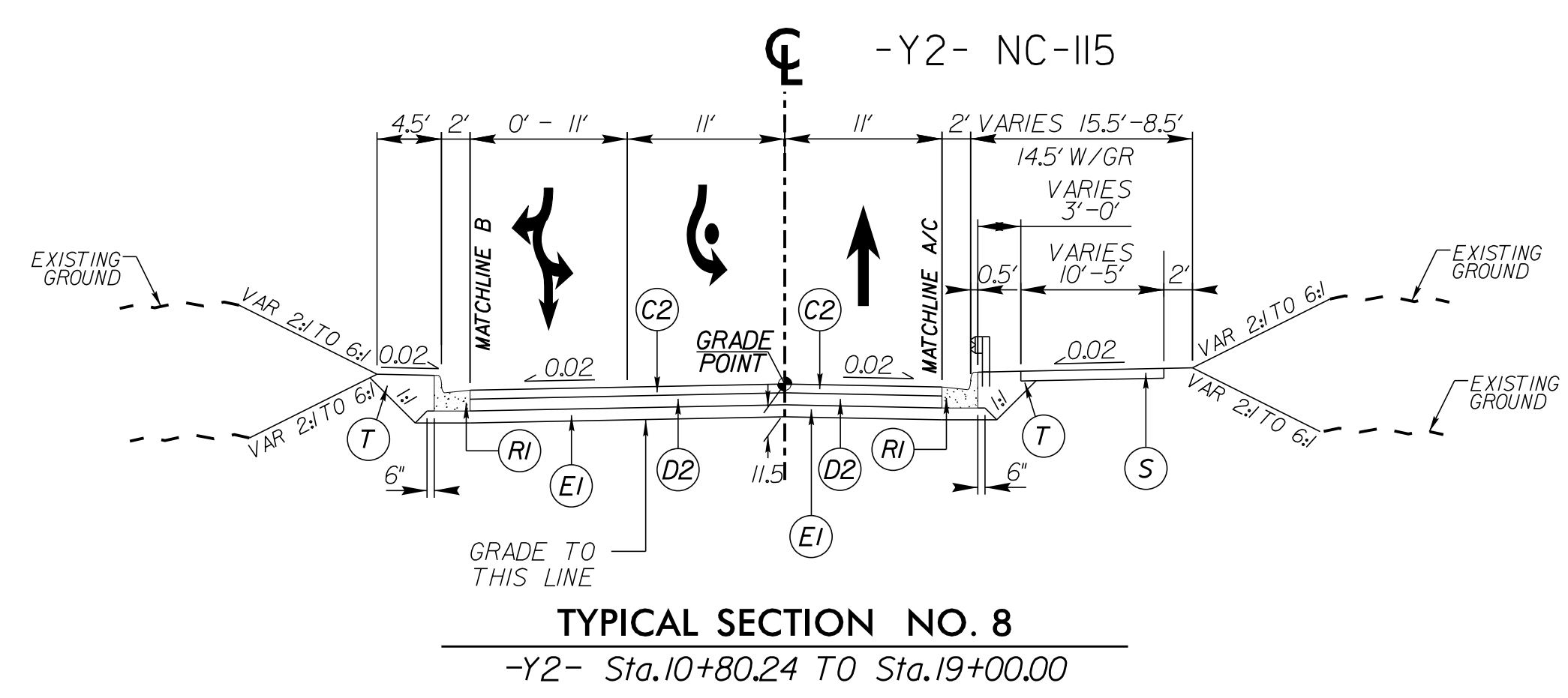
PROJECT REFERENCE NO. U-5873	SHEET NO. 2A-3
ROADWAY DESIGN ENGINEER SEAL 037923 MICHAEL D. MASTERSON	PAVEMENT DESIGN ENGINEER SEAL 034357 MICHAEL EPPERSON
DocuSign 10/26/2023	DocuSign 10/26/2023

**DOCUMENT NOT CONSIDERED FINAL UNLESS ALL SIGNATURES COMPLETED**

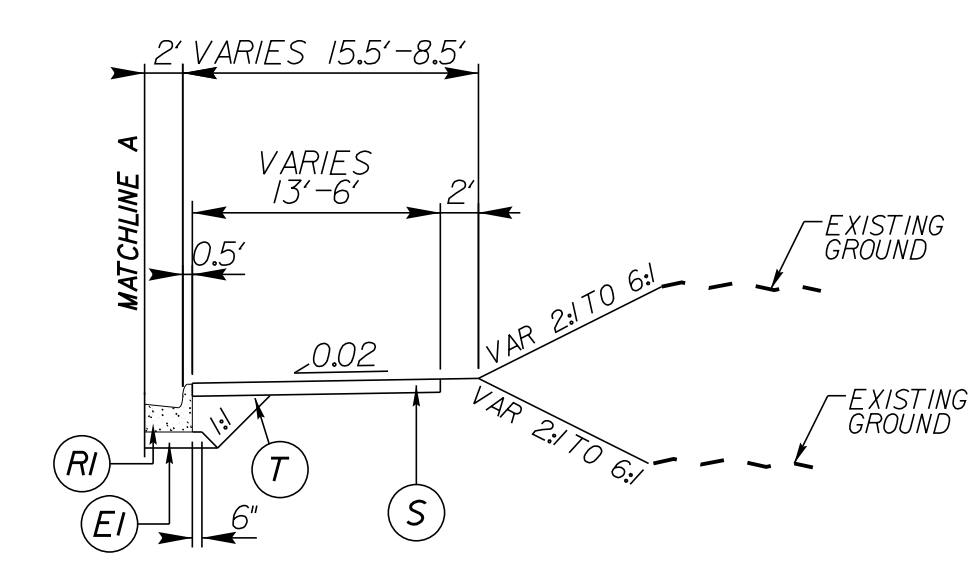
### PAVEMENT SCHEDULE (FINAL PAVEMENT DESIGN)

A1	12" TRUCK MOUNTABLE CONCRETE APRON (CLASS AU)
C1	15' S9.5C
C2	3' S9.5C
C3	VAR. DEPTH S9.5C
D1	2.5' I19.0C
D2	4' I19.0C
D3	VAR. DEPTH I19.0C
E1	4.5' B25.0C
E2	5' B25.0C
E3	VAR. DEPTH B25.0C
R1	2'-6" CONCRETE CURB & GUTTER
R2	1'-6" CONCRETE CURB & GUTTER
R3	8' x 18" CONCRETE CURB & GUTTER
S	4" CONCRETE SIDEWALK
T	EARTH MATERIAL
U	EXISTING PAVEMENT
V	INCIDENTAL MILLING
W	WEDGING

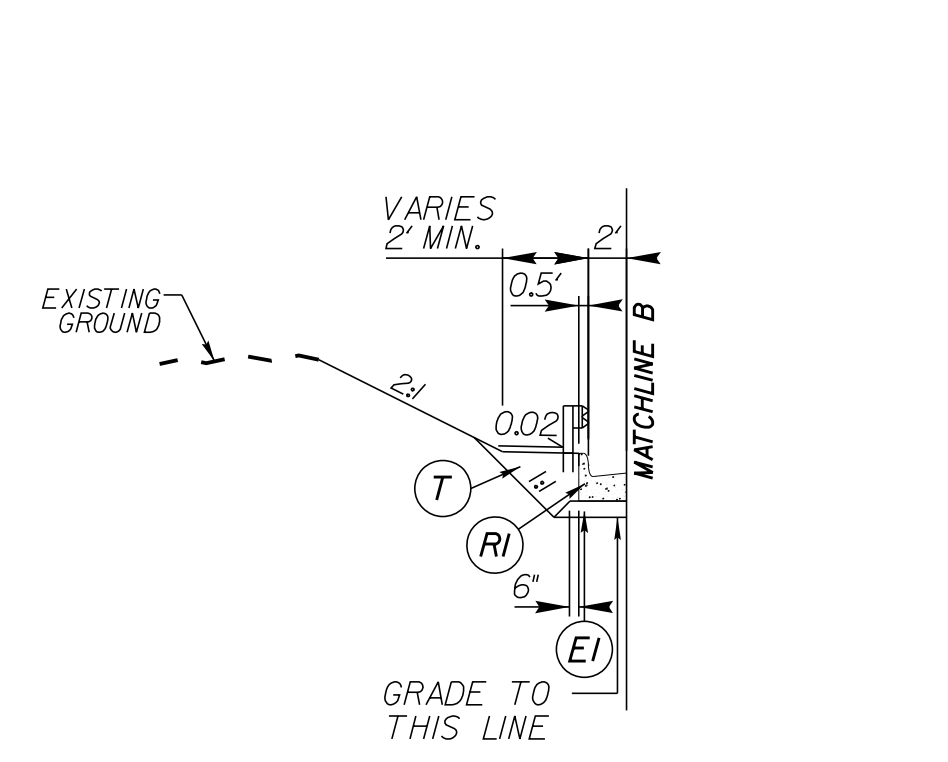
**NOTES:**  
1. PAVEMENT EDGE SLOPES ARE 1:1 UNLESS OTHERWISE INDICATED  
2. REFER TO PLAN SHEETS FOR VARIABLE WIDTHS  
3. SAWCUT AND REMOVE EXISTING ASPHALT PAVEMENT TO PROVIDE 1" MIN FULL DEPTH ASPHALT PAVEMENT  
4. UTILIZE WELDED WIRE MESH (6x6 W5xW5) IN ALL PROPOSED 12" TRUCK MOUNTABLE APRONS



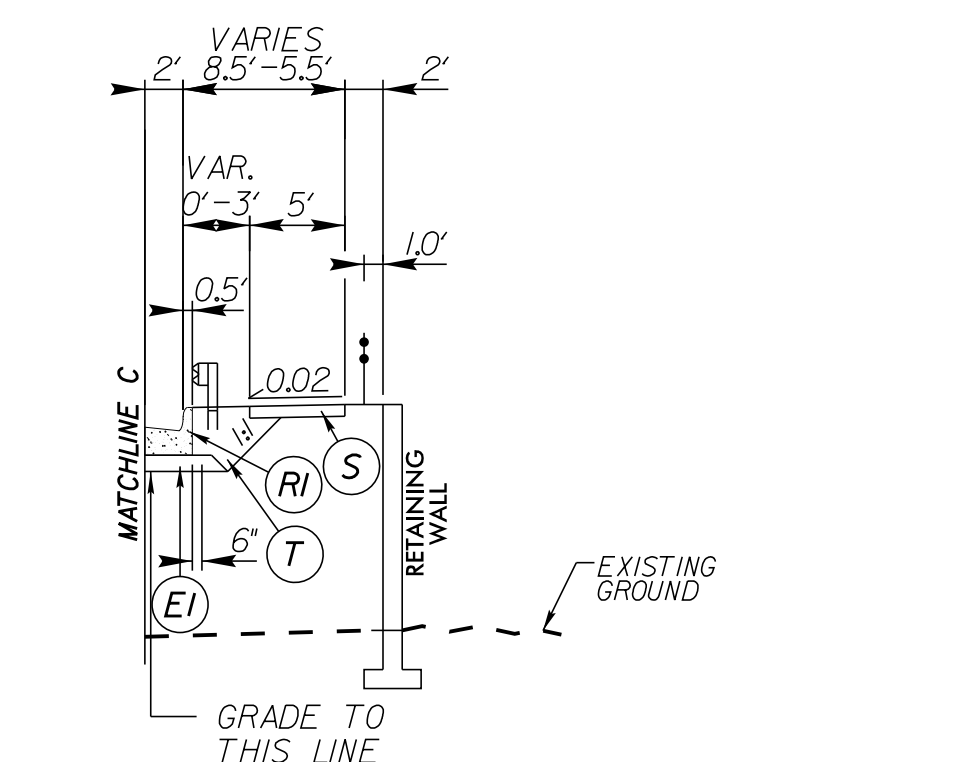
**TYPICAL SECTION NO. 8**  
-Y2- Sta.10+80.24 TO Sta.19+00.00



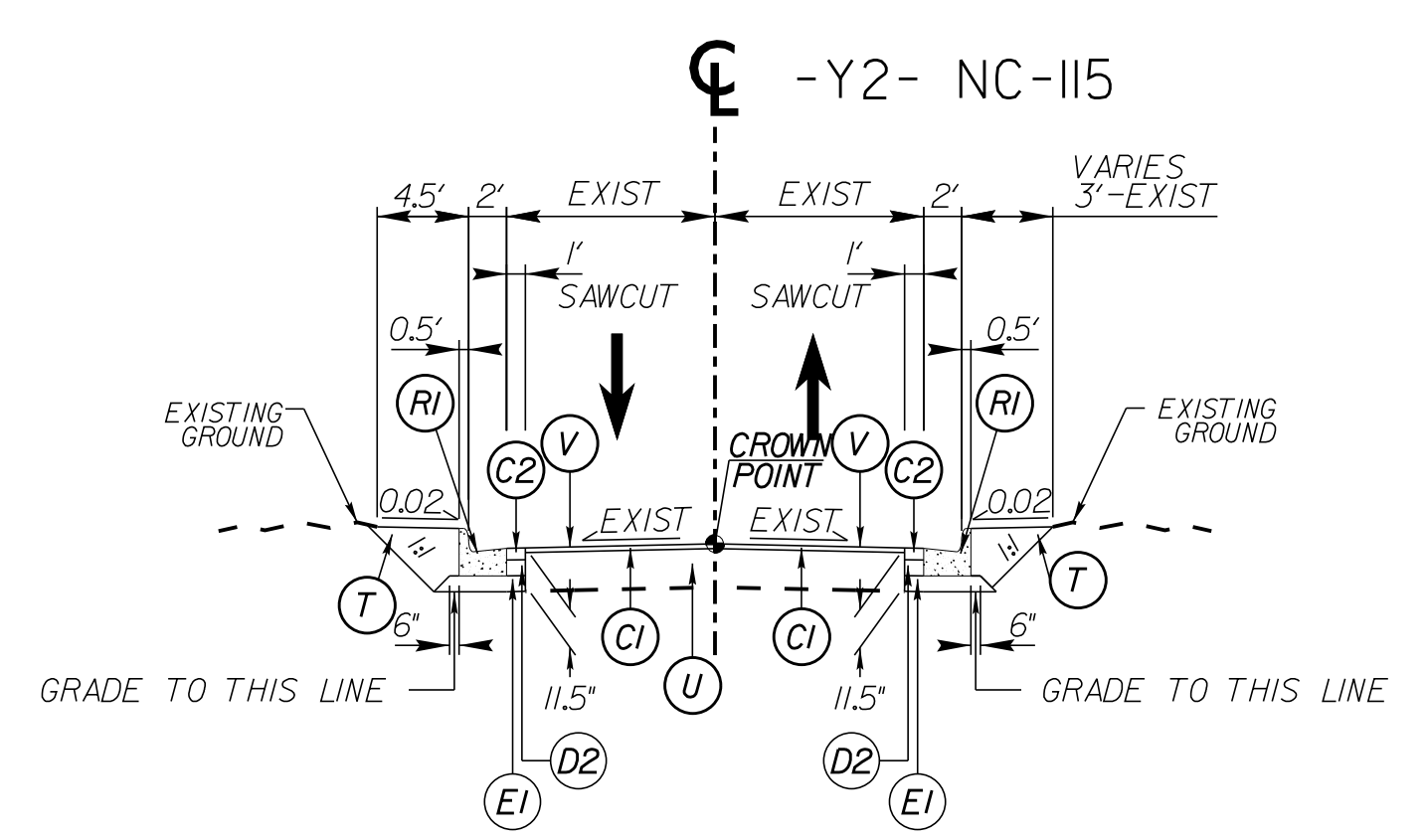
**TYPICAL SECTION NO. 8A**  
-Y2- Sta.11+87.44 TO Sta.14+90.00



**TYPICAL SECTION NO. 8B**  
-Y2- Sta.12+48.65 TO Sta.15+51.50 LT.



**TYPICAL SECTION NO. 8C**  
-Y2- Sta.16+00.00 TO Sta.17+91.93 RT.



**TYPICAL SECTION NO. 9**  
-Y2- Sta.19+00.00 TO 20+00.00

10/28/2023