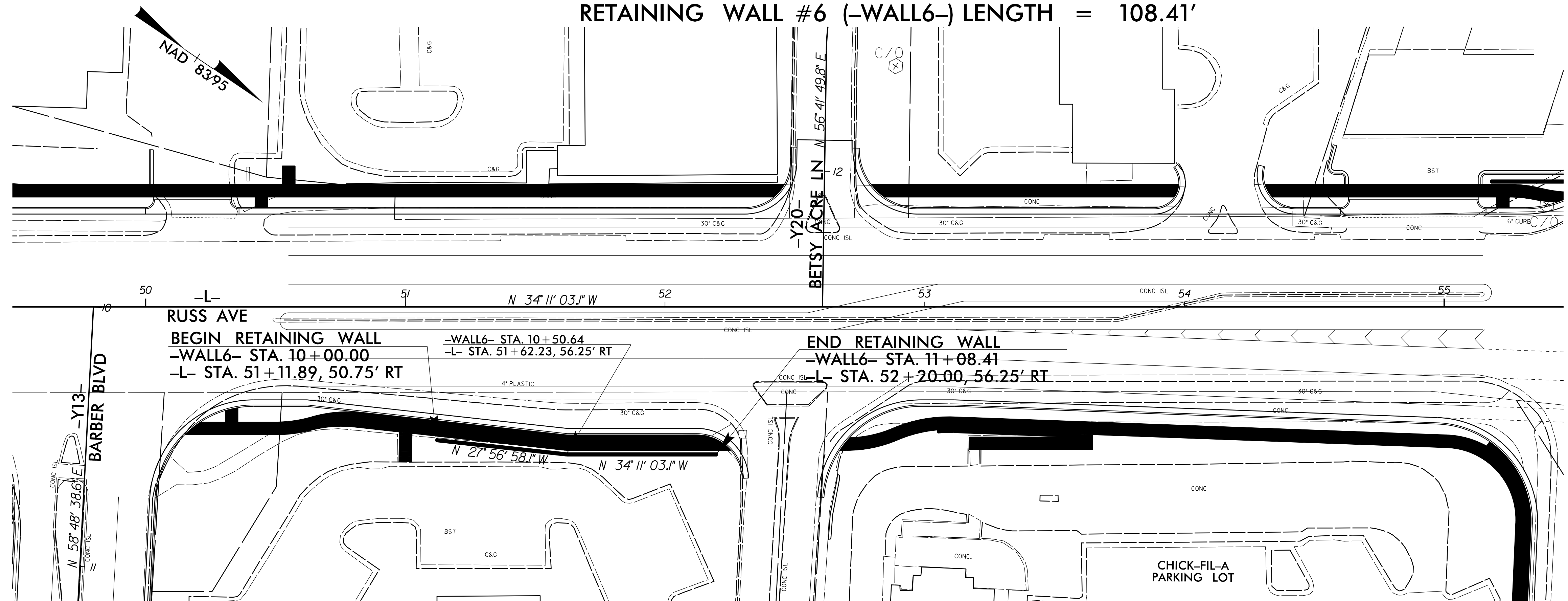


B.17/199

PROPOSED RETAINING WALL #6

RETAINING WALL #6 (-WALL6-) LENGTH = 108.41'



GEOTECHNICAL ENGINEER

ENGINEER

SEAL 045672

THOMAS J. DAILY

DocuSigned by: Thomas J. Daily 3/31/2023

SIGNATURE DATE SIGNATURE DATE

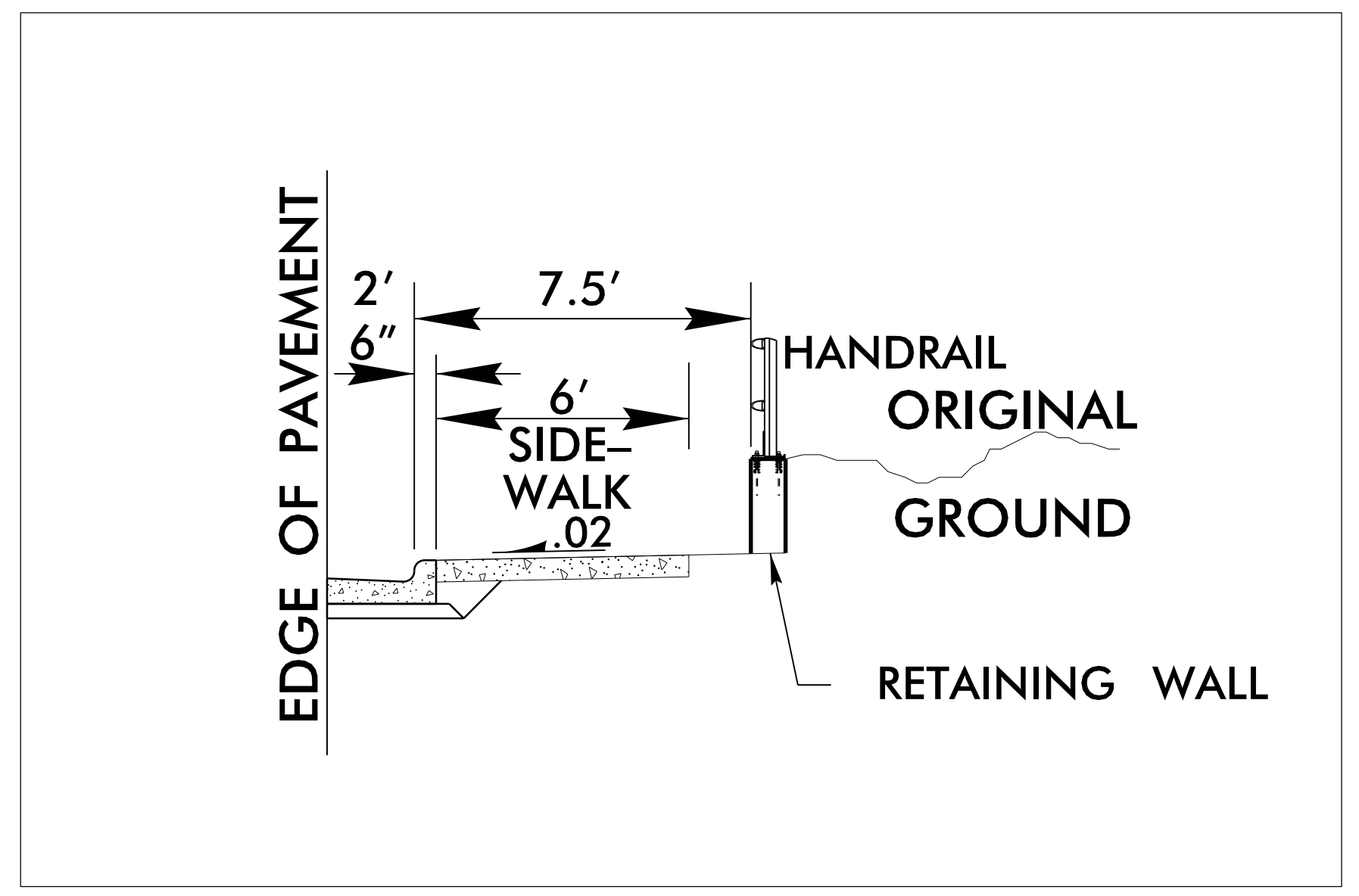
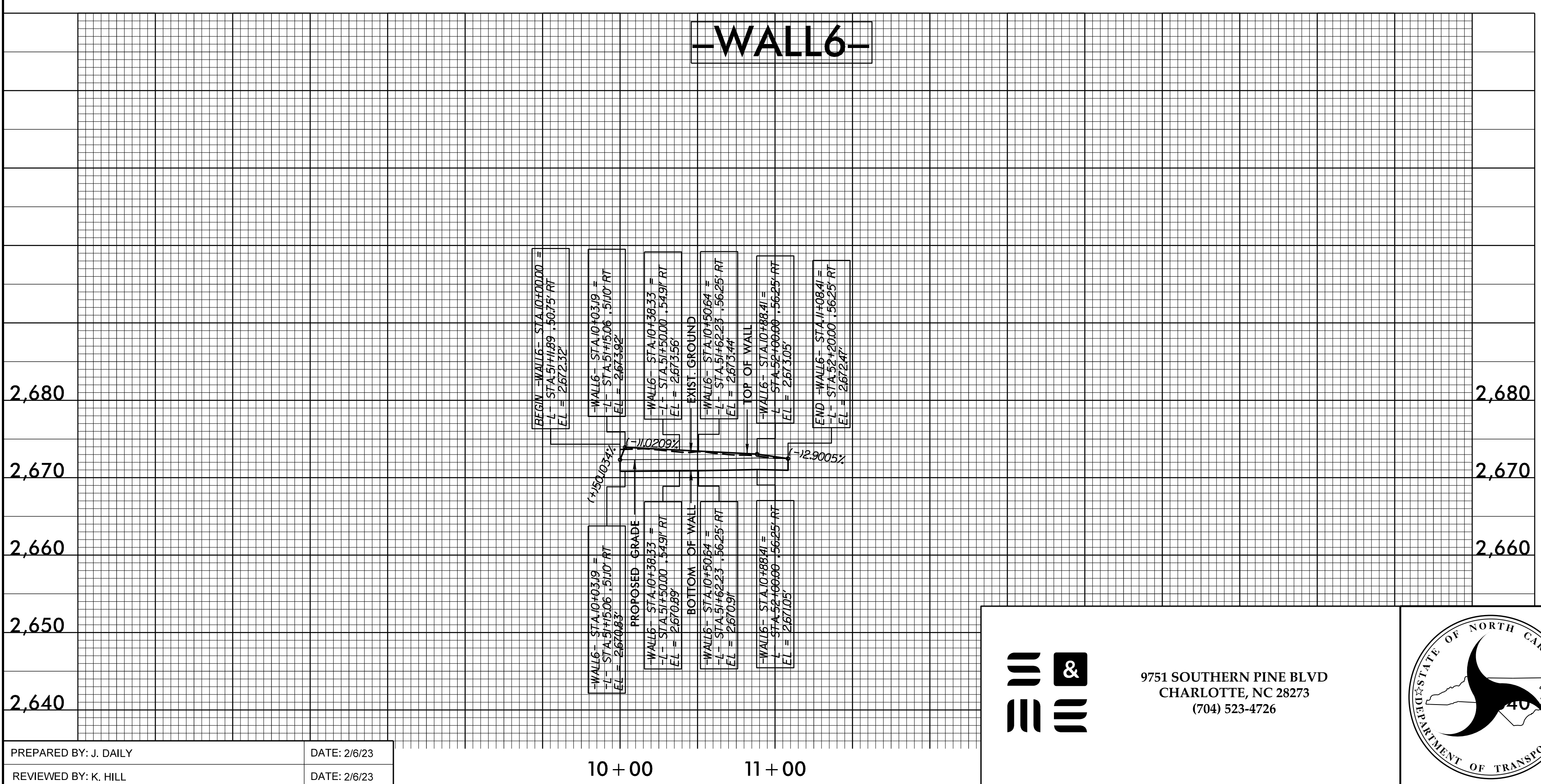
DOCUMENT NOT CONSIDERED FINAL UNLESS ALL SIGNATURES COMPLETED



(ENGLISH)

CONCRETE SIDEWALK / MEDIAN

NOTES:
SEE SHEET 29 FOR -L- PROFILE
SEE SHEETS 11 AND 12 FOR PLANS
SEE SHEET X-16 FOR CROSS SECTIONS



PROJECT NO.: U-5839

HAYWOOD COUNTY

9751 SOUTHERN PINE BLVD
CHARLOTTE, NC 28273
(704) 523-4726

NORTH CAROLINA
DEPARTMENT OF TRANSPORTATION
DIVISION OF HIGHWAYS

**GEOTECHNICAL
ENGINEERING UNIT**

RETAINING WALL NO. 6

REVISIONS					
NO.	BY	DATE	NO.	BY	DATE
1			3		
2			4		

SHEET NO. W-5

PREPARED BY: J. DAILY DATE: 2/6/23

REVIEWED BY: K. HILL DATE: 2/6/23