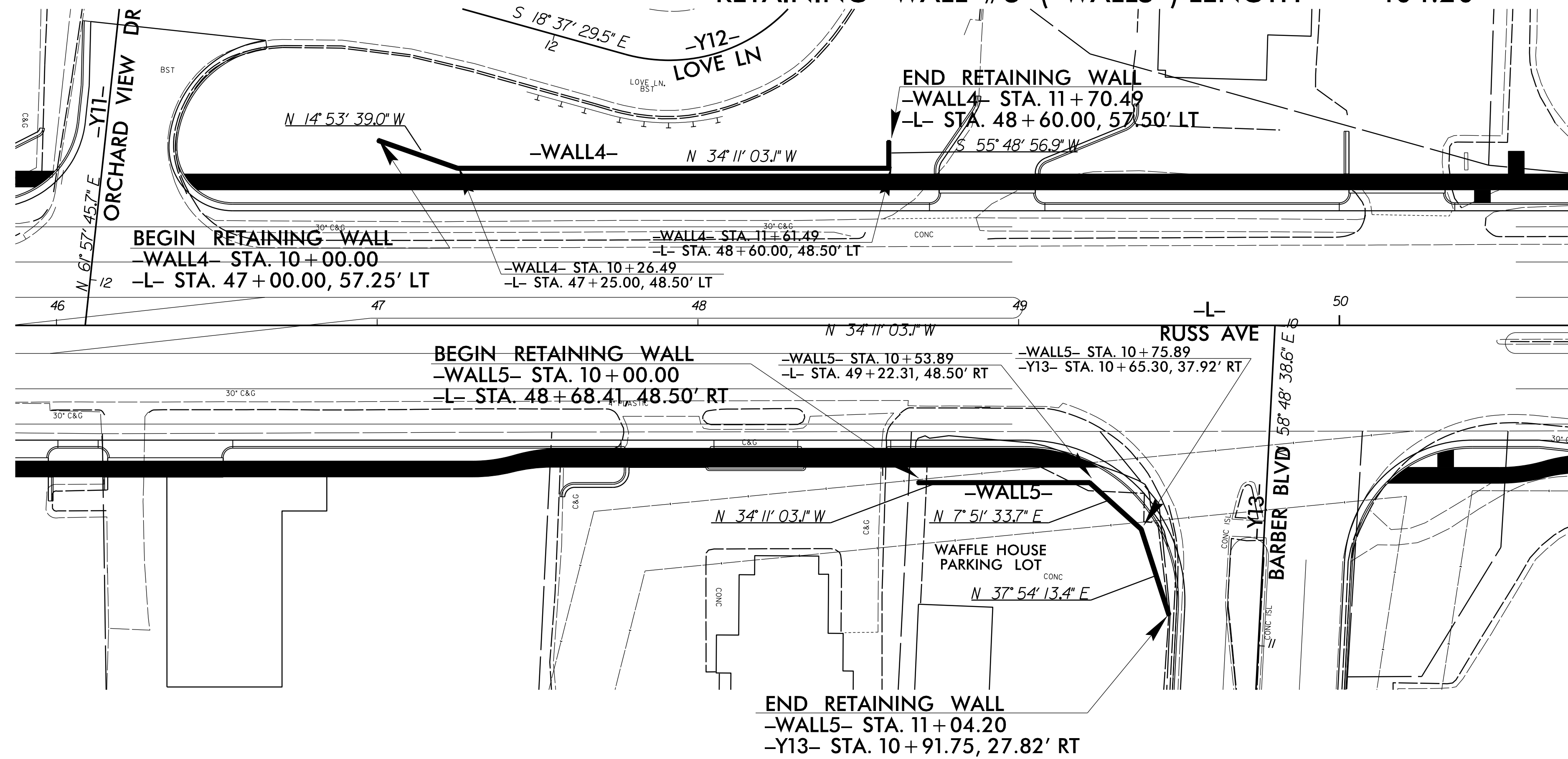


B.17/99

# PROPOSED RETAINING WALL #4 AND WALL #5

RETAINING WALL #4 (-WALL4-) LENGTH = 170.49'  
 RETAINING WALL #5 (-WALL5-) LENGTH = 104.20'



GEOTECHNICAL ENGINEER

ENGINEER

PROFESSIONAL SEAL 045672 ENGINEER THOMAS J. DAILY

DocuSigned by: Thomas J. Daily 3/31/2023

SIGNATURE DATE SIGNATURE DATE

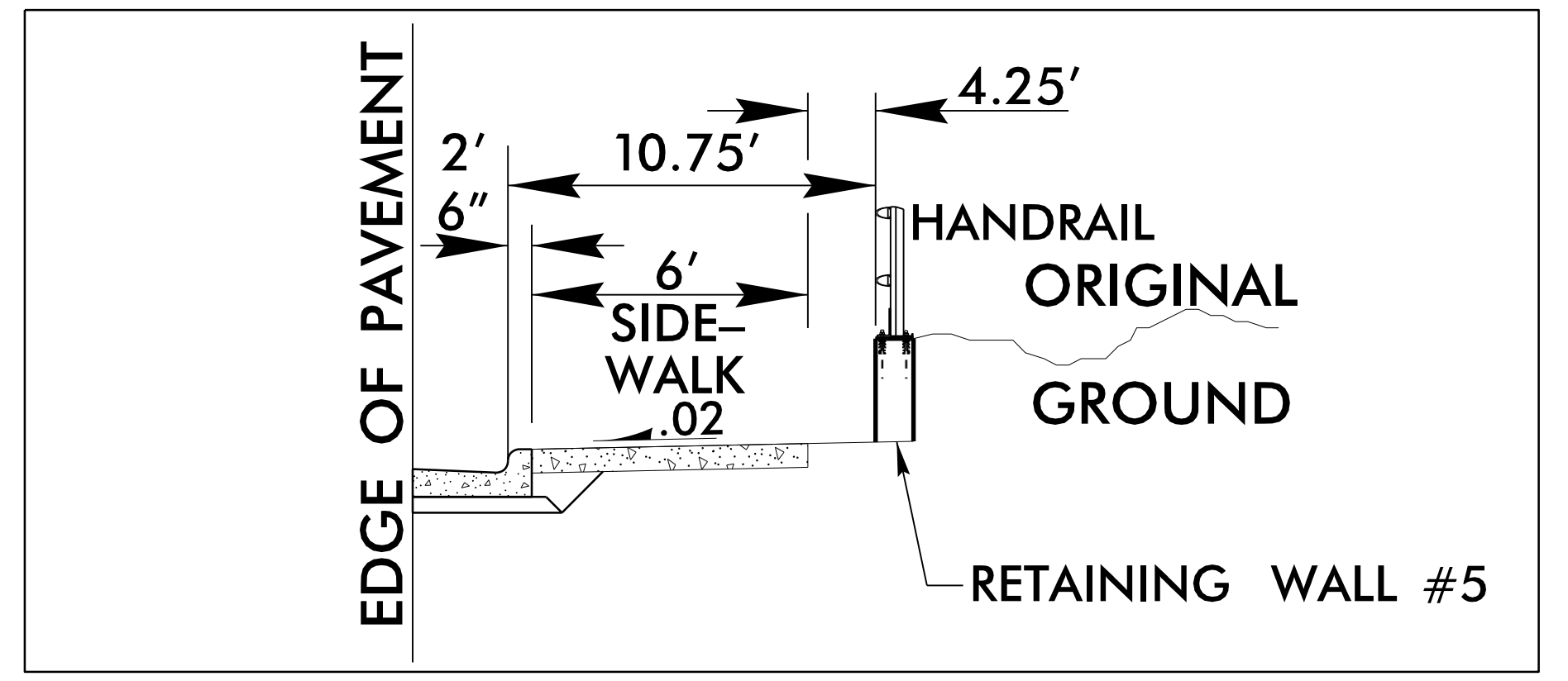
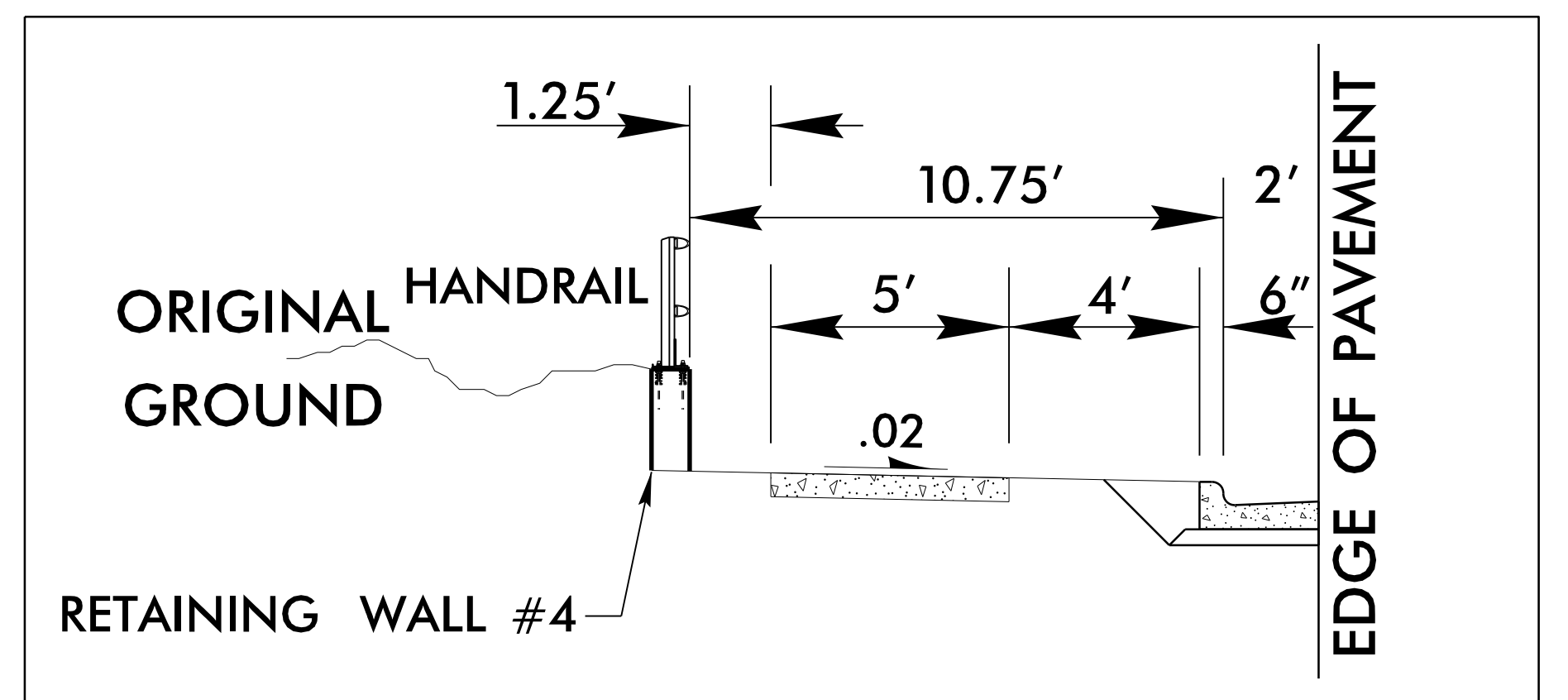
**DOCUMENT NOT CONSIDERED FINAL UNLESS ALL SIGNATURES COMPLETED**



(ENGLISH)

CONCRETE SIDEWALK /MEDIAN

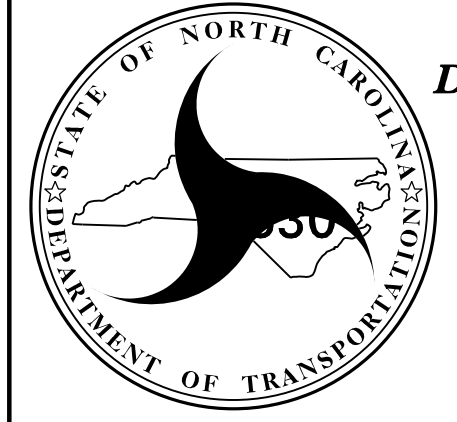
NOTES:  
 SEE SHEET 28 FOR -L- PROFILE  
 SEE SHEET 34 FOR -Y13- PROFILE  
 SEE SHEET 11 FOR PLANS  
 SEE SHEETS X-14 & X-15 FOR CROSS SECTIONS  
 SEE SHEET 2C-8 FOR HAND RAIL DETAILS



PROJECT NO.: U-5839  
 HAYWOOD COUNTY

-WALL4-		-WALL5-	
2,690	2,690	2,690	2,690
2,680	2,680	2,680	2,680
2,670	2,670	2,670	2,670
2,660	2,660	2,660	2,660
2,650	2,650	2,650	2,650
2,640	2,640	2,640	2,640
2,630	2,630	2,630	2,630

751 SOUTHERN PINE BLVD  
 CHARLOTTE, NC 28273  
 (704) 523-4726



NORTH CAROLINA DEPARTMENT OF TRANSPORTATION DIVISION OF HIGHWAYS

**GEOTECHNICAL ENGINEERING UNIT**

RETAINING WALL NO. 4  
 RETAINING WALL NO. 5

REVISIONS					
NO.	BY	DATE	NO.	BY	DATE
1			3		
2			4		

SHEET NO. W-4

PREPARED BY: J. DAILY DATE: 2/6/23  
 REVIEWED BY: K. HILL DATE: 2/6/23