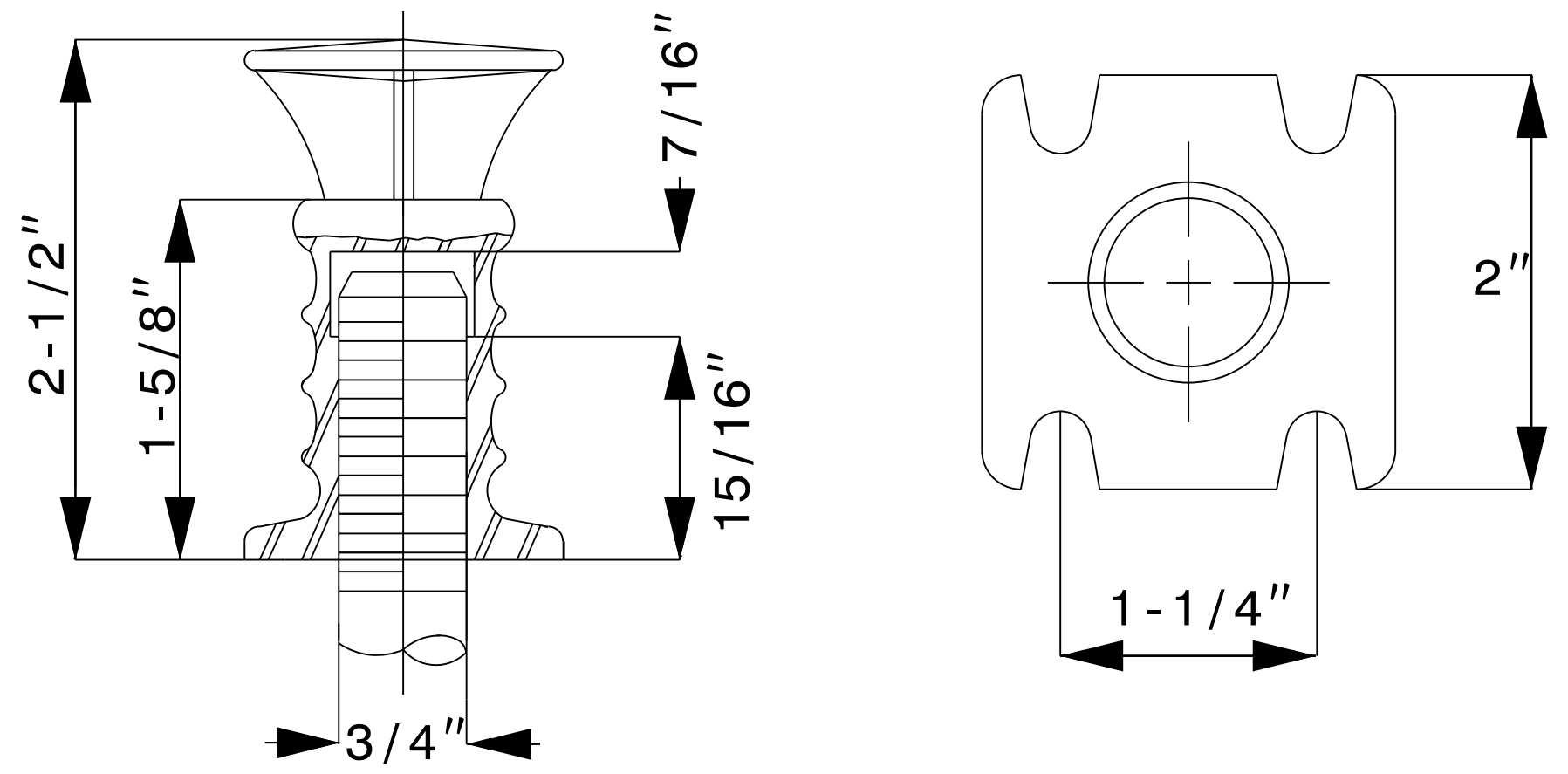


**NOTES:**  
 INSERTS MUST BE LOCATED IN THE HIGH POINT OF THE STAY-IN-PLACE FORMS.  
 EXACT SPACING MAY VARY IN ORDER TO AVOID LOCATING INSERTS ON SLOPING OR LOW SURFACE OF STAY IN PLACE FORM.

AT TRAVERSE JOINTS PLACE HANGERS 1'-6" MIN. FROM THE CENTER LINE OF THE JOINT.

**STAY-IN-PLACE FORMS CONCRETE INSERT PLACEMENT DETAIL**

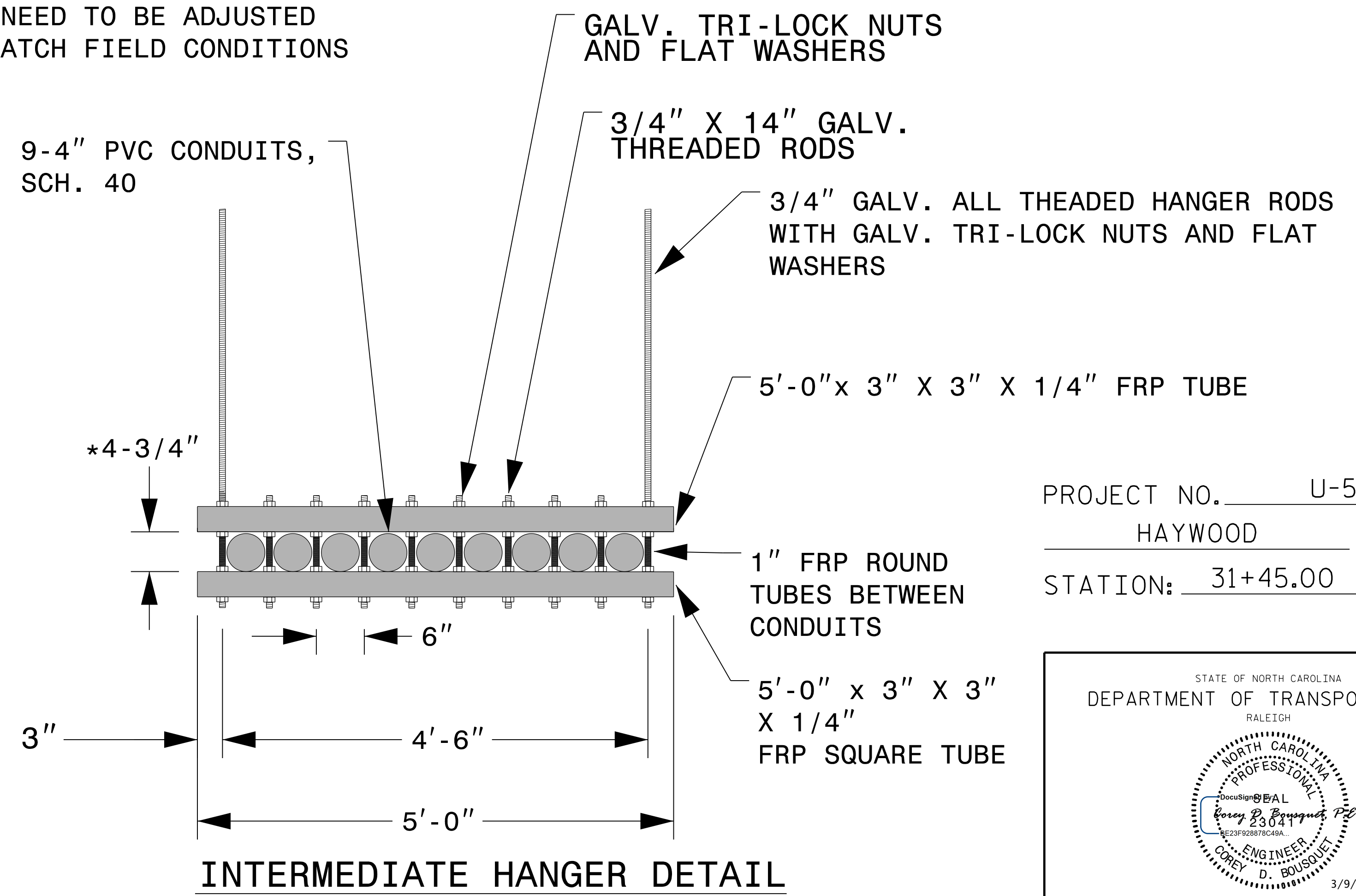


INSERTS SHALL BE HOT DIPPED GALVANIZED GRINNELL FIGURE 152

PIPE SIZE	MAX. RECOM LOAD, LBS.	WEIGHT LBS. EACH
9-4" CONDUITS	2500	0.64

**SCREW CONCRETE INSERT DETAIL**

\* MAY NEED TO BE ADJUSTED TO MATCH FIELD CONDITIONS



**INTERMEDIATE HANGER DETAIL**

PROJECT NO. U-5839  
 HAYWOOD COUNTY  
 STATION: 31+45.00 -L- POT

STATE OF NORTH CAROLINA  
 DEPARTMENT OF TRANSPORTATION  
 RALEIGH

ENGINEER  
 COREY D. BOUSQUET  
 3/9/2023

REVISIONS						SHEET NO.
NO.	BY:	DATE:	NO.	BY:	DATE:	TOTAL SHEETS
1			3			SU-24
2			4			

**DOCUMENT NOT CONSIDERED FINAL UNLESS ALL SIGNATURES COMPLETED**

DRAWN BY : W. B. ALLEN DATE : 4/19  
 CHECKED BY : Z. H. BROWN DATE : 4/19  
 DESIGN ENGINEER OF RECORD: L. K. AUSTIN DATE : 4/19

DATE: 8:15 AM 8/FILES