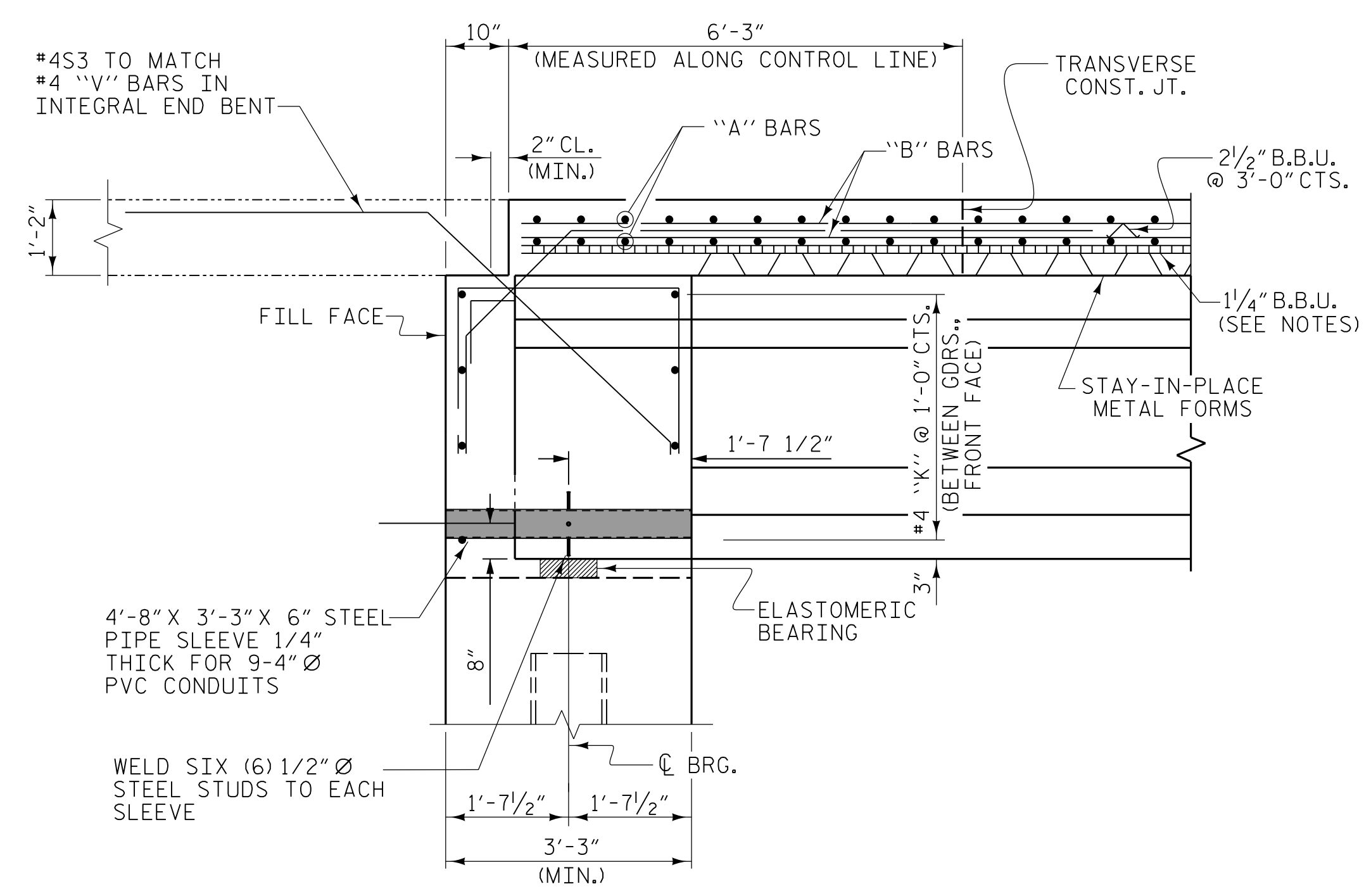


TYPICAL HALF SECTION (SHOWING INTEGRAL END BENT DIAPHRAGM)



SECTION THRU INTEGRAL END BENTS (BAY 8)

(SEE SHEET 1 OF 5 FOR SECTION AT BAYS 6, 7 & 9)

PROJECT NO. U-5839
HAYWOOD COUNTY
STATION: 31+45.00 -L- POT

SHEET 2 OF 5

STATE OF NORTH CAROLINA
DEPARTMENT OF TRANSPORTATION
RALEIGH

SUPERSTRUCTURE
TYPICAL SECTION
END BENTS

NV5
NV5 ENGINEERS & CONSULTANTS, INC.
6750 TRYON ROAD
CARY, NC 27518
P: 919.851.1912 www.NV5.com
NC License # F-1333
Formerly CALIX Engineers & Consultants

NORTH CAROLINA PROFESSIONAL SEAL
JERRY D. BOUSQUET, P.E.
23041
ENGINEER
COREY D. BOUSQUET

DOCUMENT NOT CONSIDERED FINAL UNLESS ALL SIGNATURES COMPLETED

REVISIONS						SHEET NO.
NO.	BY:	DATE:	NO.	BY:	DATE:	SU-21
1			3			TOTAL SHEETS
2			4			

DATE: 5/19
DATE: 7/19
DATE: 4/19

DRAWN BY: W. B. ALLEN
CHECKED BY: Z. H. BROWN
DESIGN ENGINEER OF RECORD: L. K. AUSTIN

DATE: 3/9/2023