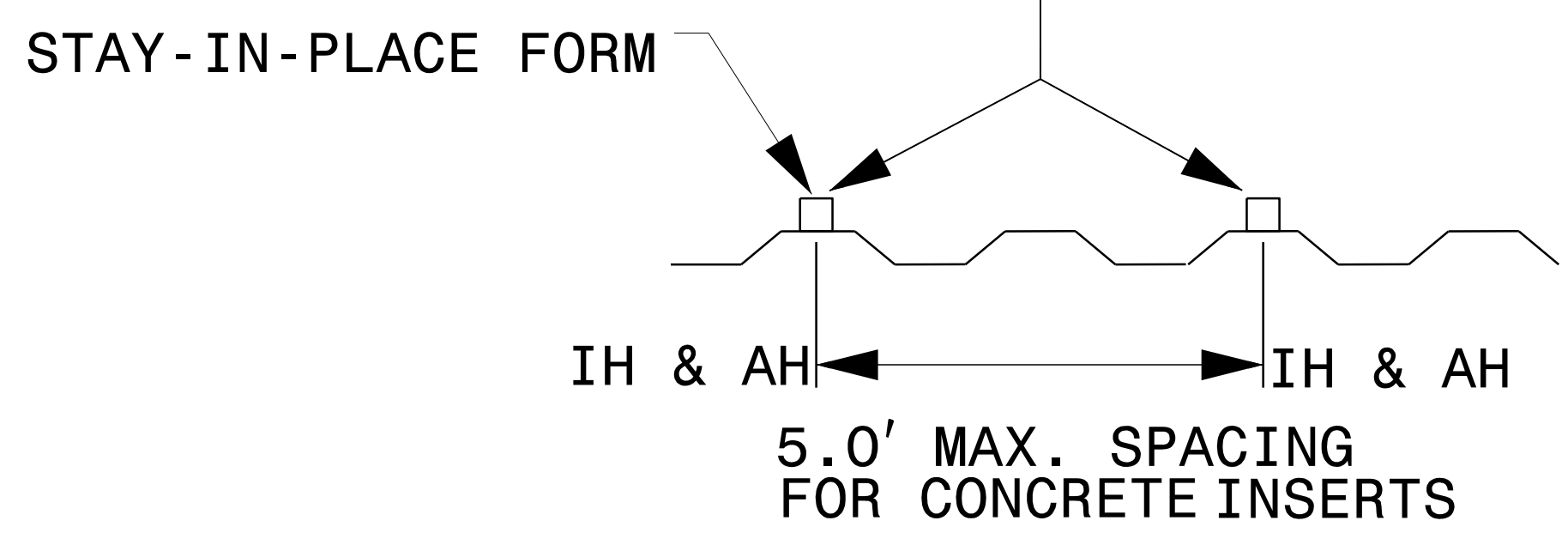


TYPICAL SECTION

APPROVED 3/4" CONCRETE INSERTS @ MAX SPACING OF 5.0' FOR 9-4" PVC CONDUITS



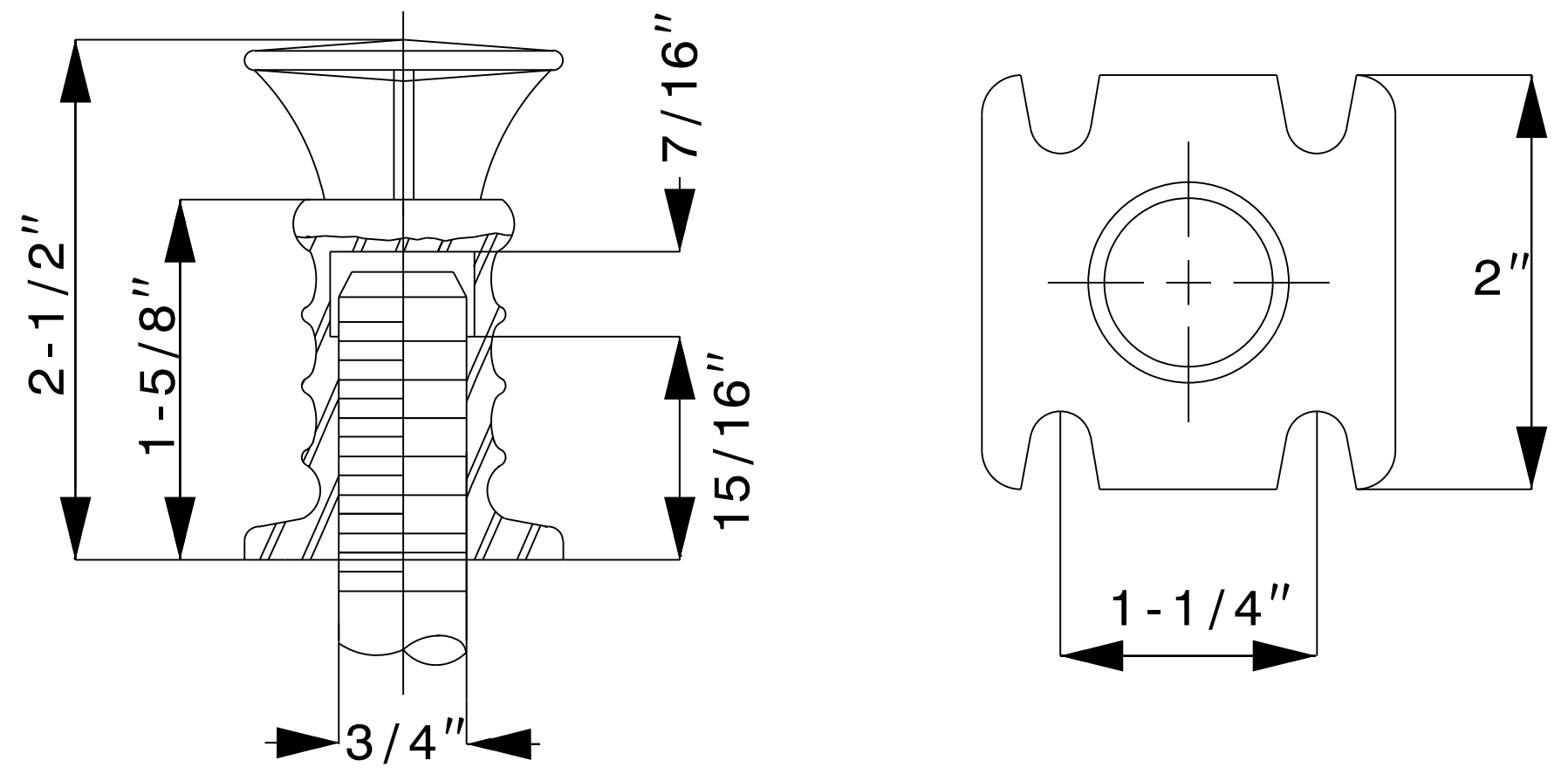
NOTES:

INSERTS MUST BE LOCATED IN THE HIGH POINT OF THE STAY-IN-PLACE FORMS.

EXACT SPACING MAY VARY IN ORDER TO AVOID LOCATING INSERTS ON SLOPING OR LOW SURFACE OF STAY IN PLACE FORM.

AT TRAVERSE JOINTS PLACE CONCRETE INSERTS 1'-6" MIN. FROM THE CENTER LINE OF THE JOINT.

STAY-IN-PLACE FORMS CONCRETE INSERT PLACEMENT DETAIL (INTERMEDIATE HANGERS)

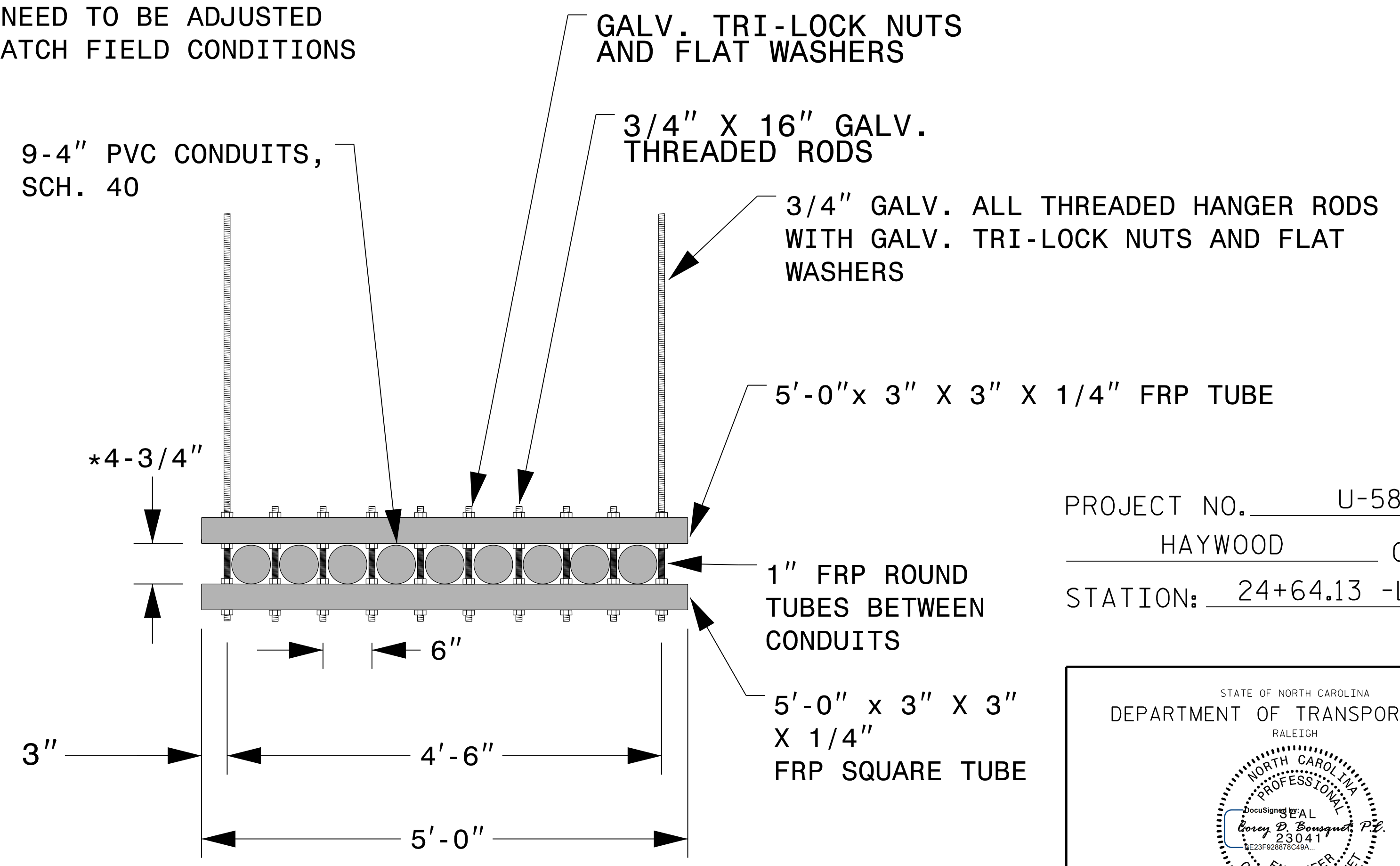


INSERTS SHALL BE HOT DIPPED GALVANIZED GRINNELL FIGURE 152

PIPE SIZE	MAX. RECOM LOAD, LBS.	WEIGHT LBS. EACH
9-4" CONDUITS	2500	0.64

SCREW CONCRETE INSERT DETAIL

* MAY NEED TO BE ADJUSTED TO MATCH FIELD CONDITIONS



INTERMEDIATE HANGER DETAIL

PROJECT NO. U-5839
 HAYWOOD COUNTY
 STATION: 24+64.13 -L- POT

STATE OF NORTH CAROLINA
 DEPARTMENT OF TRANSPORTATION
 RALEIGH

ENGINEER
 COREY D. BOUSQUET
 3/9/2023

REVISIONS				SHEET NO.			
NO.	BY:	DATE:	NO.	BY:	DATE:	SU-14	
1			3			TOTAL SHEETS	
2			4				

DOCUMENT NOT CONSIDERED FINAL UNLESS ALL SIGNATURES COMPLETED

+

+

8:DATE# 8:TIME# 8:FILES#