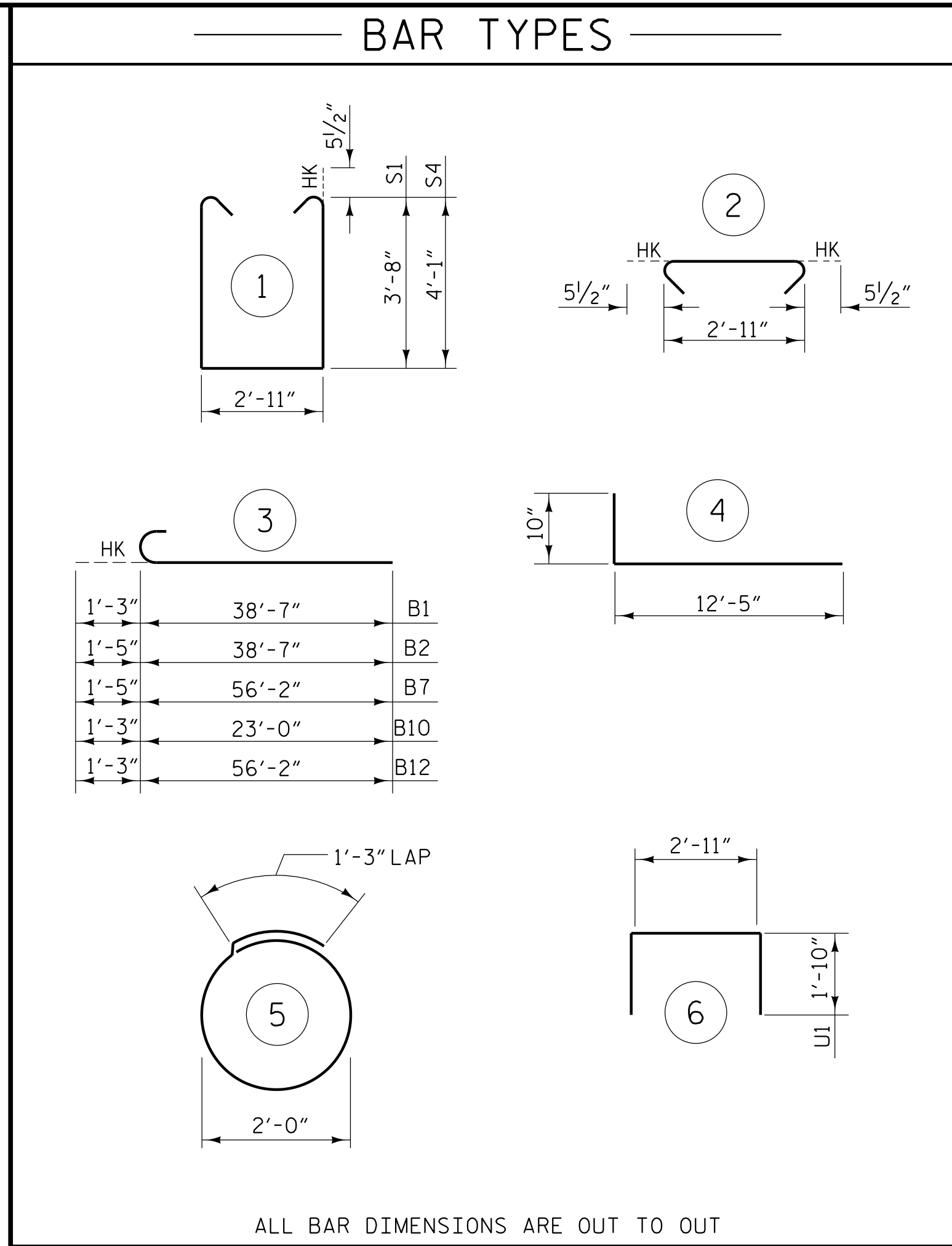


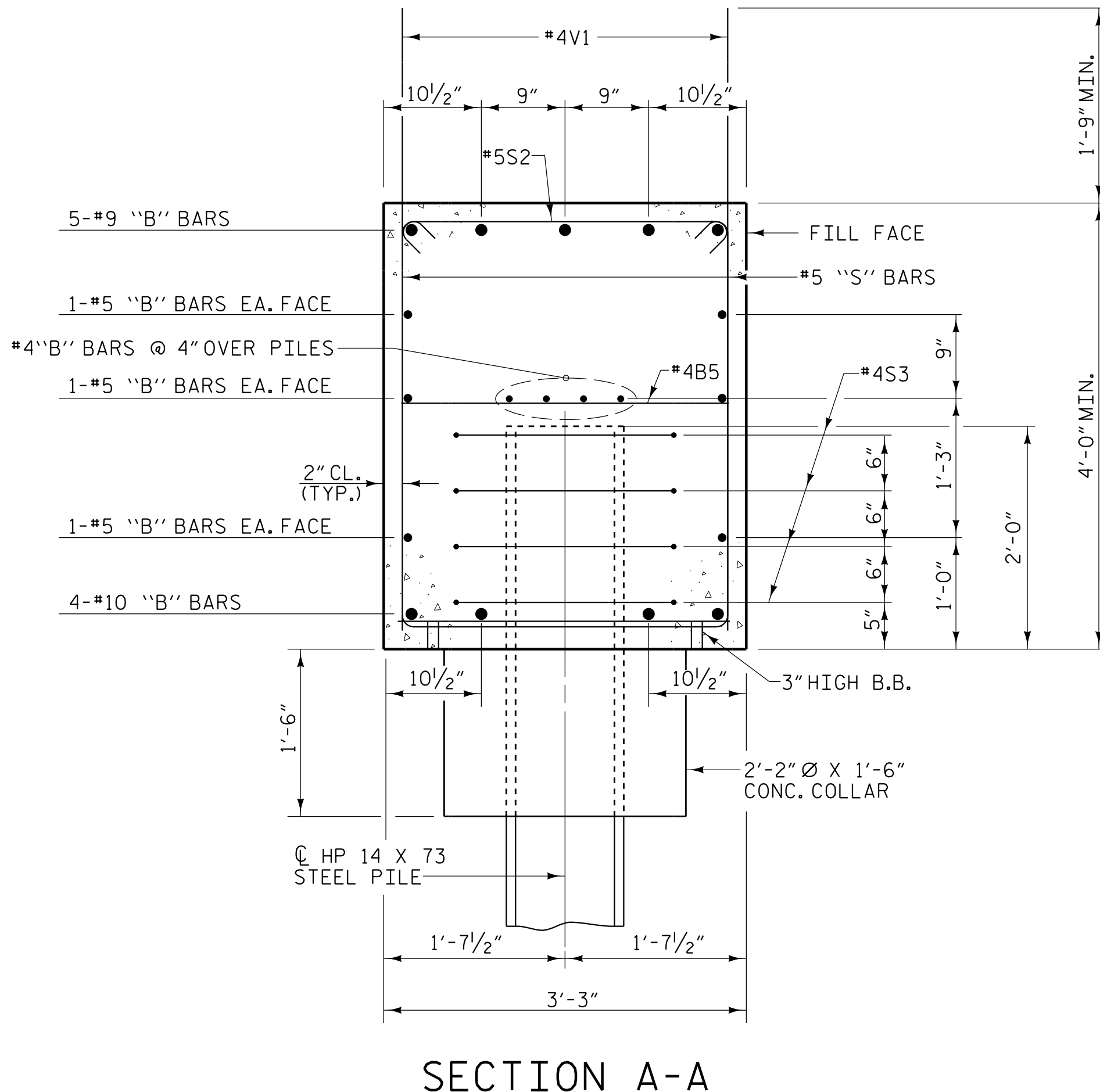
**PILE SPLICE DETAILS**

POSITION OF PILE DURING WELDING.

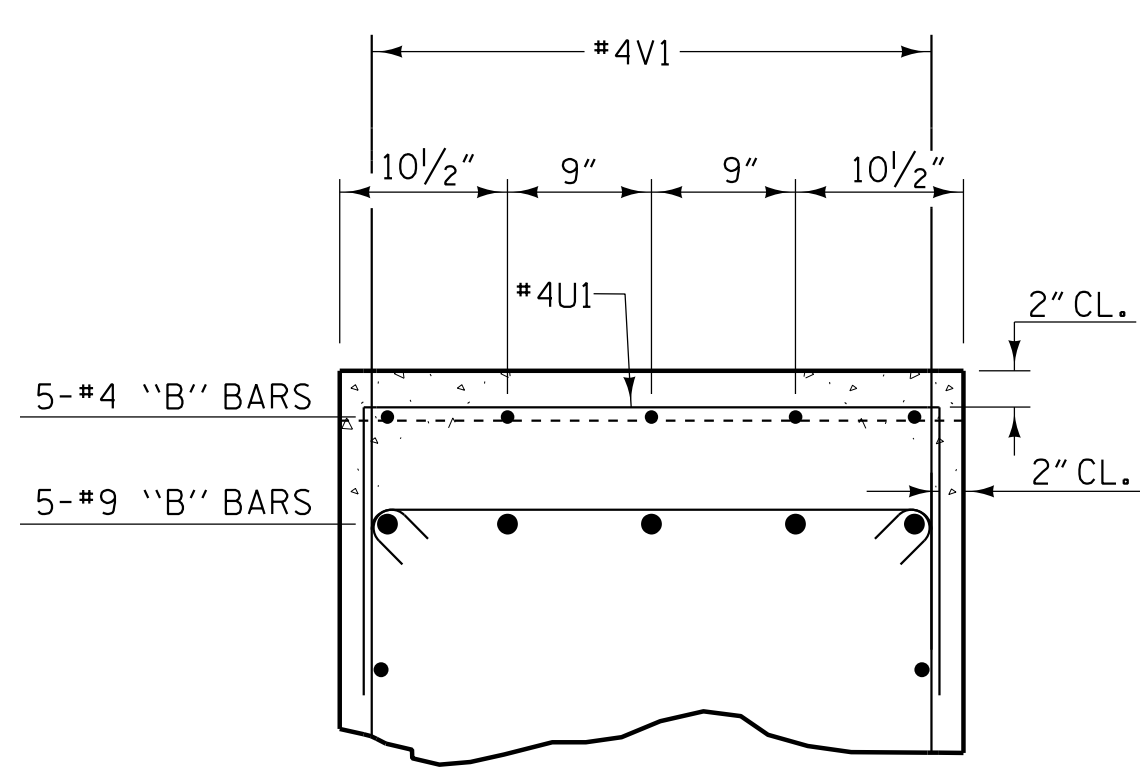


**BILL OF MATERIAL**

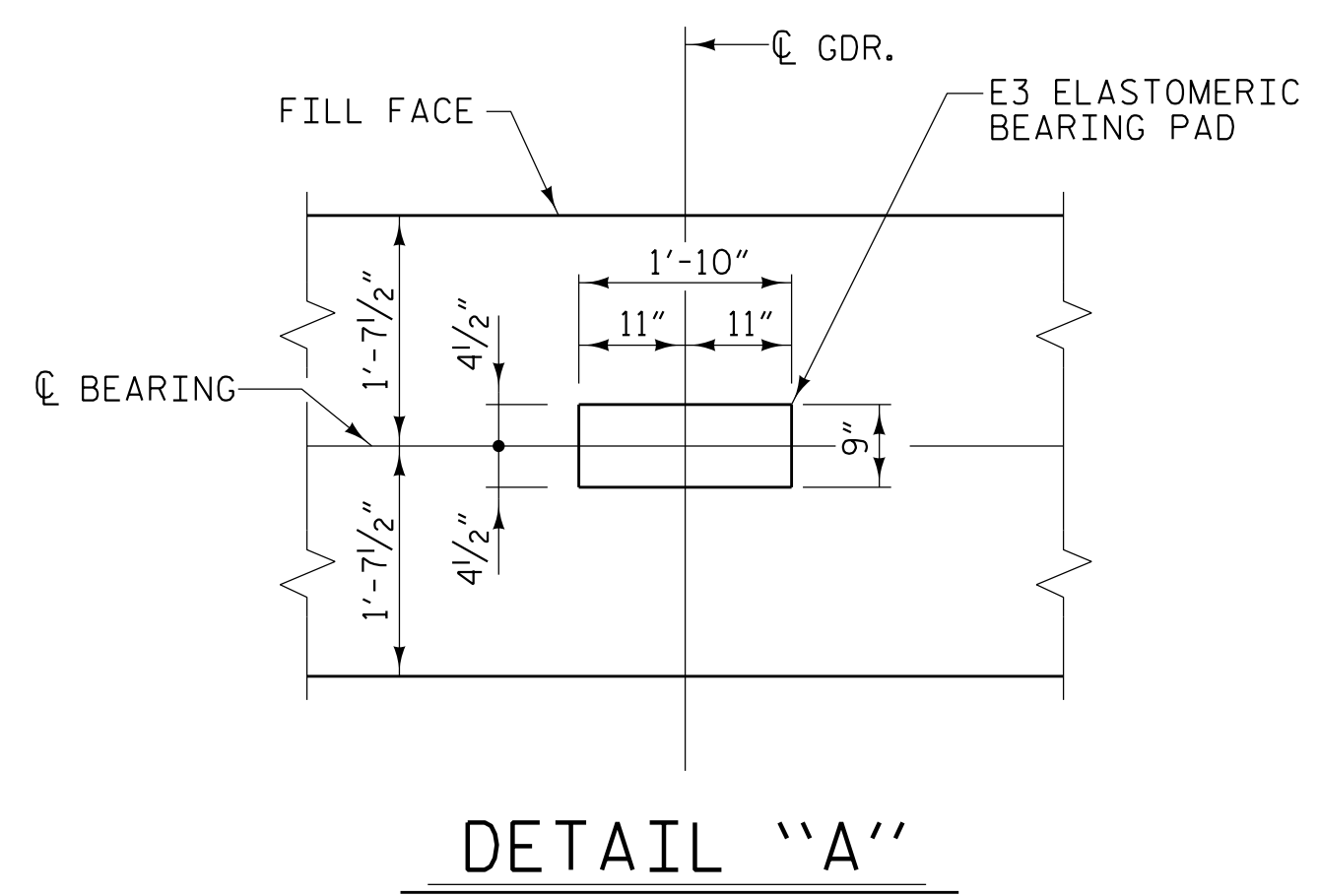
END BENT 2-STAGE I						END BENT 2-STAGE II							
BAR	NO.	SIZE	TYPE	LENGTH	WEIGHT	BAR	NO.	SIZE	TYPE	LENGTH	WEIGHT		
B1	5	#9	3	39'-10"	677	B5	14	#4	STR	2'-11"	27		
B2	4	#10	3	40'-0"	688	B7	4	#10	3	57'-7"	991		
B3	6	#5	STR	40'-7"	254	B8	6	#5	STR	57'-0"	357		
B4	8	#4	STR	21'-3"	114	B9	8	#4	STR	29'-11"	160		
B5	9	#4	STR	2'-11"	18	B10	5	#9	3	24'-3"	412		
B6	5	#4	STR	12'-7"	42	B11	5	#4	STR	9'-6"	32		
H1	38	#5	4	13'-3"	525	B12	5	#9	STR	57'-5"	976		
H2	22	#4	STR	3'-11"	58	H1	38	#5	4	13'-3"	525		
						H2	22	#4	STR	3'-11"	58		
S1	34	#5	1	11'-2"	396								
S2	34	#5	2	3'-10"	136	S1	32	#5	1	11'-2"	373		
S3	16	#4	5	7'-7"	81	S2	53	#5	2	3'-10"	212		
						S3	24	#4	5	7'-7"	122		
						S4	21	#5	1	12'-0"	263		
U1	9	#4	6	6'-7"	40								
V1	54	#4	STR	6'-3"	225	U1	7	#4	6	6'-7"	31		
V2	34	#4	STR	9'-2"	208								
						V1	80	#4	STR	6'-3"	334		
						V2	34	#4	STR	9'-2"	208		
<b>TOTAL REINFORCING STEEL</b>						<b>3462 LBS.</b>	<b>TOTAL REINFORCING STEEL</b>						<b>5081 LBS.</b>
CLASS "A" CONCRETE - CU. YARDS						CLASS "A" CONCRETE - CU. YARDS							
POUR 1 (CAP, COLLARS, LOWER WINGS)						21.8 CU. YDS.	POUR 1 (CAP, COLLARS, LOWER WINGS)						33.3 CU. YDS.
POUR 2 (UPPER WINGS)						3.3 CU. YDS.	POUR 2 (UPPER WINGS)						3.3 CU. YDS.
<b>TOTAL</b>						<b>25.1 CU. YDS.</b>	<b>TOTAL</b>						<b>36.6 CU. YDS.</b>
HP 14 X 73 STEEL PILES						HP 14 X 73 STEEL PILES							
5 PILES REQUIRED - LIN. FEET						200	5 PILES REQUIRED - LIN. FEET						275
PILE DRIVING EQUIPMENT SETUP FOR HP 14 X 73 STEEL PILES - EACH						5	PILE DRIVING EQUIPMENT SETUP FOR HP 14 X 73 STEEL PILES - EACH						5



**SECTION A-A**



**PART SECTION B-B**



**DETAIL "A"**

PLANS PREPARED BY:

**NV5**

NV5 ENGINEERS & CONSULTANTS, INC.  
3300 REGENCY PARKWAY, SUITE 100  
CARY, NC 27518  
P: 919.851.1912 www.NV5.com  
NC License # F-1333

DocuSigned by:

*Robert C. Larson*

BE2398D9220470

STATE OF NORTH CAROLINA  
PROFESSIONAL SEAL  
ENGINEER  
ROBERT C. LARSON  
14114  
5/19/2023

PROJECT NO. U-5839  
HAYWOOD COUNTY  
 STATION: 31+45.00 -L- POT

SHEET 4 OF 4

STATE OF NORTH CAROLINA  
 DEPARTMENT OF TRANSPORTATION  
 RALEIGH

**SUBSTRUCTURE  
 INTEGRAL END BENT 2  
 DETAILS**

REVISIONS						SHEET NO.
NO.	BY:	DATE:	NO.	BY:	DATE:	S2-44
1			3			TOTAL SHEETS
2			4			49

DRAWN BY: W. B. ALLEN DATE: 10/19  
 CHECKED BY: Z. H. BROWN DATE: 11/19  
 DESIGN ENGINEER OF RECORD: R. C. LARSON DATE: 2/23

DocuSigned by:

*Robert C. Larson*

BE2398D9220470

**DOCUMENT NOT CONSIDERED FINAL  
 UNLESS ALL SIGNATURES COMPLETED**

5/17/2023 7:03:34 PM R:\Structures\Bridge over Richard Creek\44 U5839-SMU EB\_43086.dgn