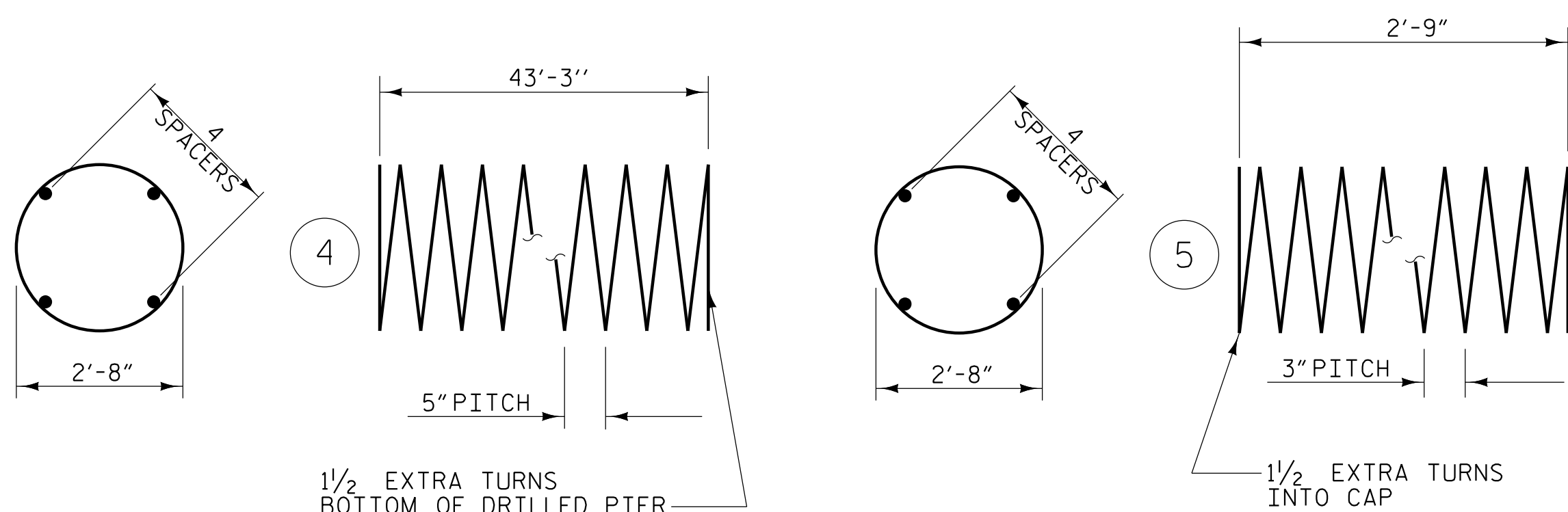
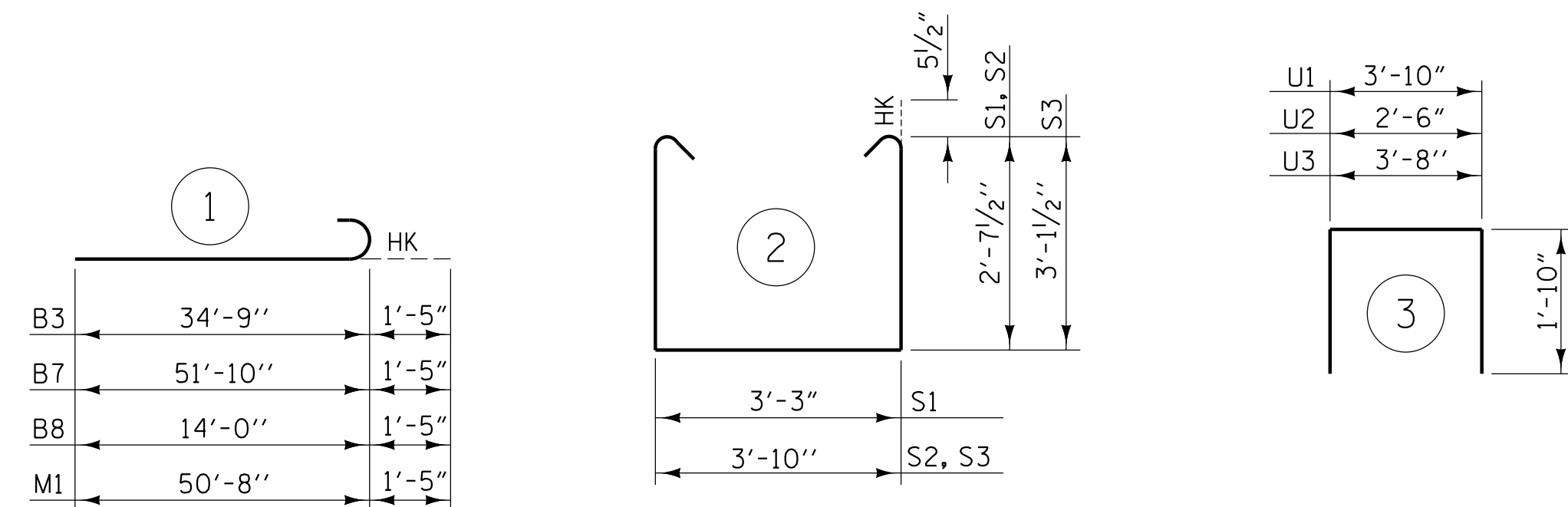


BAR TYPES



ALL BAR DIMENSIONS ARE OUT TO OUT

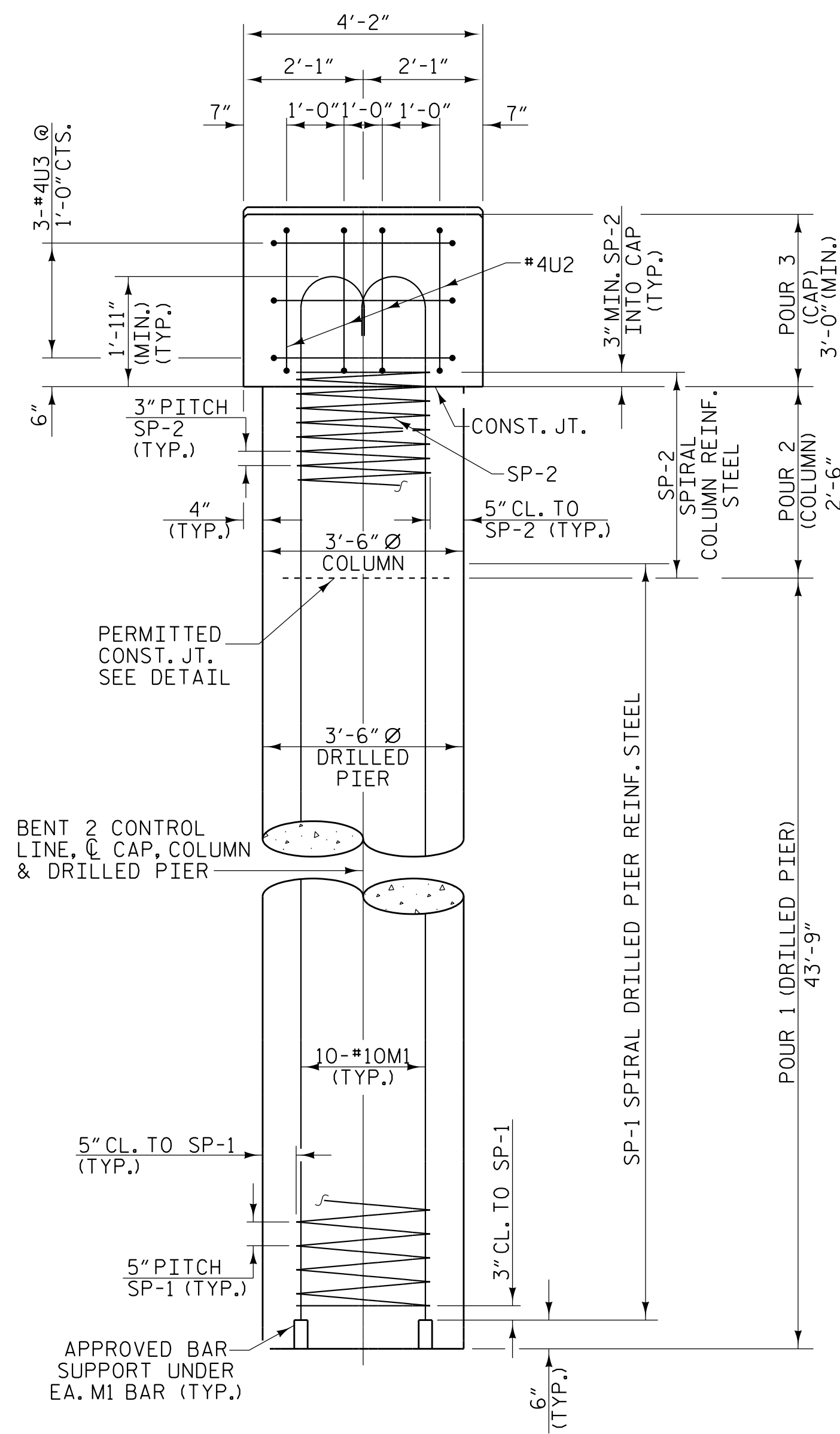
** THE SP-1 SPIRAL REINFORCING STEEL SHALL BE W31 OR D-31 COLD DRAWN WIRE OR #5 PLAIN OR DEFORMED BAR.
 *** THE SP-2 SPIRAL REINFORCING STEEL SHALL BE W20 OR D-20 COLD DRAWN WIRE OR #4 PLAIN OR DEFORMED BAR.

▲ NO SEPARATE PAYMENT WILL BE MADE FOR CSL TUBES. CSL TUBES WILL BE INCLUDED IN THE UNIT BID PRICE FOR DRILLED PIERS.

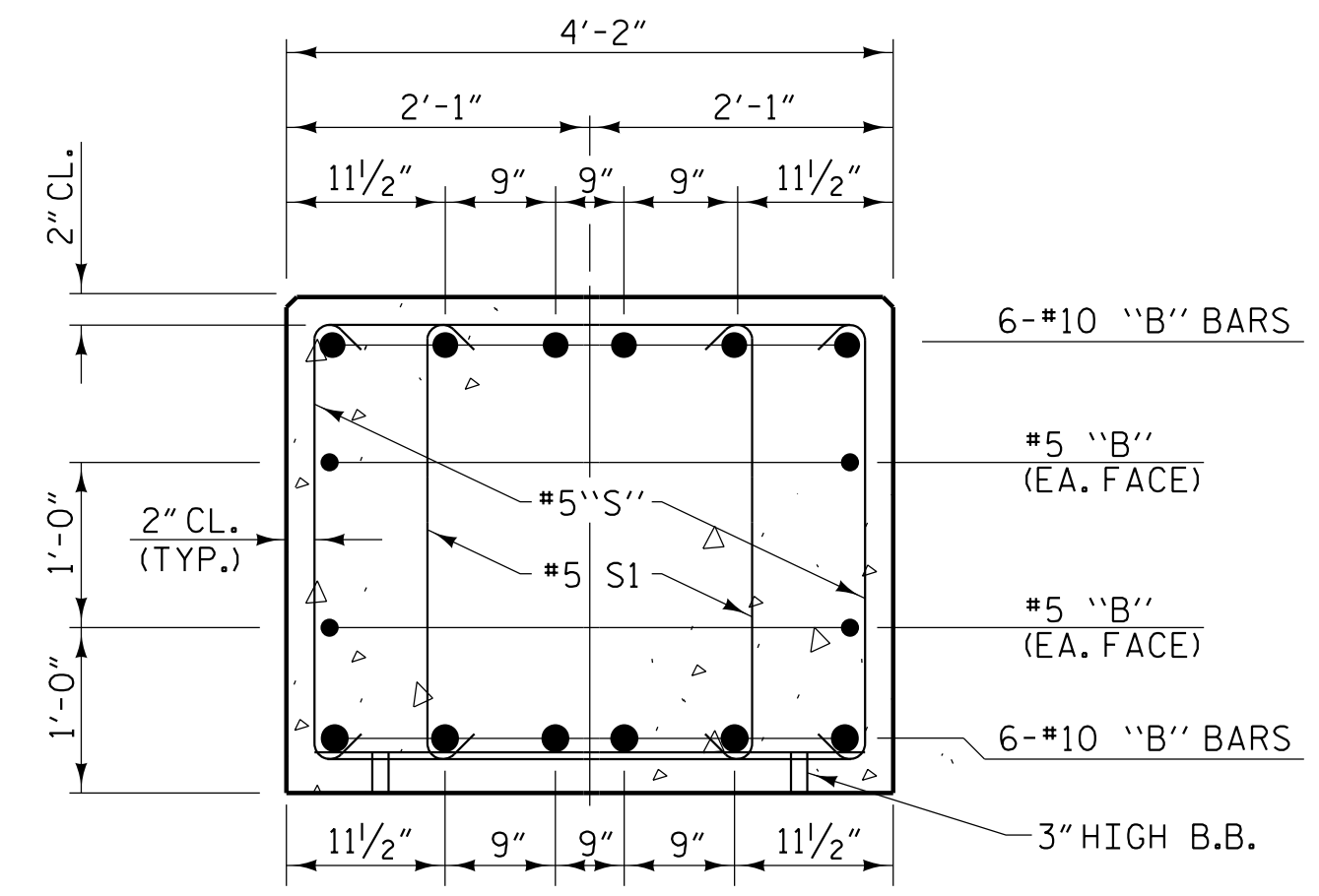
SPlicing OF LONGITUDINAL BARS IN THE DRILLED PIERS WILL NOT BE PERMITTED

BILL OF MATERIAL

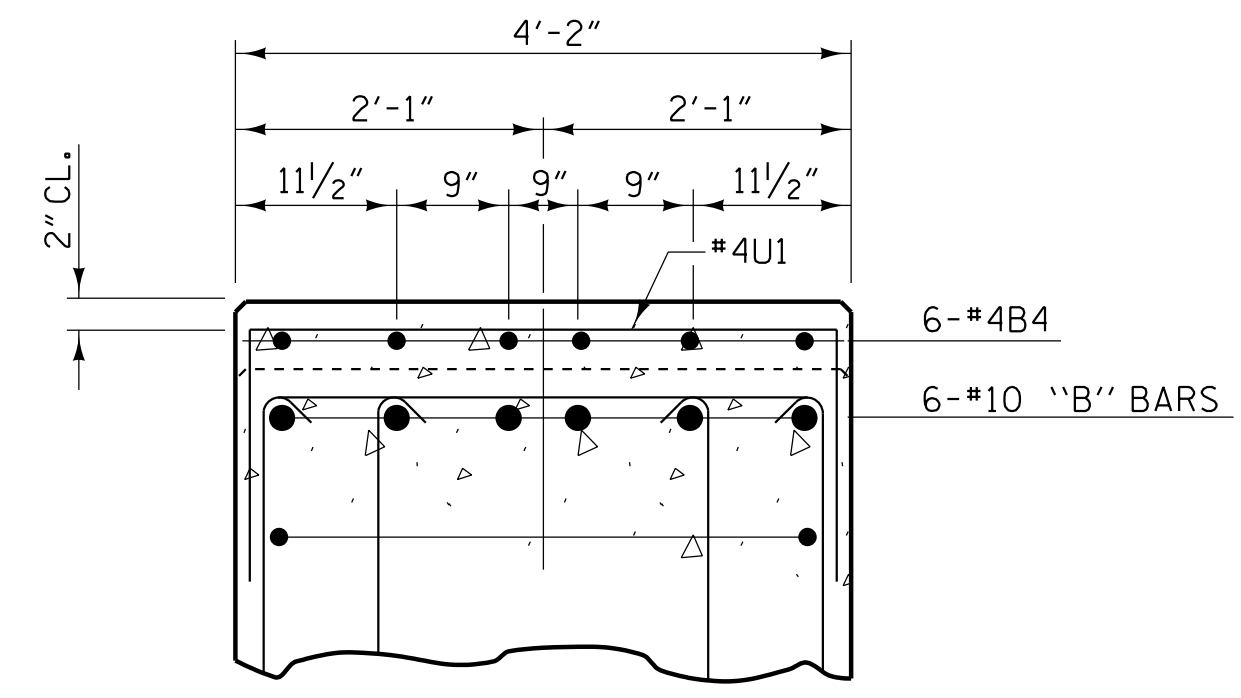
BENT 2 - STAGE I						BENT 2 - STAGE II							
BAR	NO.	SIZE	TYPE	LENGTH	WEIGHT	BAR	NO.	SIZE	TYPE	LENGTH	WEIGHT		
B1	6	#10	STR	34'-9"	897	B4	30	#4	STR	2'-11"	58		
B2	4	#5	STR	36'-9"	153	B5	6	#10	STR	51'-10"	1338		
B3	6	#10	1	36'-2"	934	B6	4	#5	STR	52'-10"	220		
B4	18	#4	STR	2'-11"	35	B7	6	#10	1	53'-3"	1375		
						B8	6	#10	1	15'-3"	394		
M1	30	#10	1	52'-1"	6723	M1	40	#10	1	52'-1"	8965		
S1	10	#5	2	9'-5"	98	S1	48	#5	2	9'-5"	471		
S2	41	#5	2	10'-0"	428	S2	34	#5	2	10'-0"	355		
						S3	32	#5	2	11'-0"	367		
U1	24	#4	3	7'-0"	112	U1	36	#4	3	7'-0"	168		
U2	4	#4	3	6'-2"	16	U2	4	#4	3	6'-2"	16		
U3	3	#4	3	6'-10"	14	U3	3	#4	3	6'-10"	14		
TOTAL REINFORCING STEEL						9410 LBS.	TOTAL REINFORCING STEEL						13741 LBS.
SP-1	3	**	4	866'-0"	2710	SP-1	4	**	4	866'-0"	3613		
SP-2	3	***	5	103'-2"	207	SP-2	4	***	5	103'-2"	276		
SPIRAL COLUMN REINFORCING STEEL (SP) 2917 LBS.						SPIRAL COLUMN REINFORCING STEEL (SP) 3889 LBS.							
CLASS "A" CONCRETE - CU. YARDS						CLASS "A" CONCRETE - CU. YARDS							
POUR 2 - COLUMN						2.7 CU. YDS.	POUR 2 - COLUMN						3.6 CU. YDS.
POUR 3 - CAP						16.9 CU. YDS.	POUR 3 - CAP						27.9 CU. YDS.
TOTAL						19.6 CU. YDS.	TOTAL						31.5 CU. YDS.
DRILLED PIERS						DRILLED PIERS							
DRILLED PIER CONCRETE POUR 1 (DRILLED PIERS)						46.8 C.Y.	DRILLED PIER CONCRETE POUR 1 (DRILLED PIERS)						62.4 C.Y.
3'-6" Ø DRILLED PIER IN SOIL						95.7 LIN. FT.	3'-6" Ø DRILLED PIER IN SOIL						127.6 LIN. FT.
3'-6" Ø DRILLED PIER NOT IN SOIL						35.6 LIN. FT.	3'-6" Ø DRILLED PIER NOT IN SOIL						47.4 LIN. FT.
PERMANENT STEEL CASING FOR 3'-6" Ø DRILLED PIER						107.1 LIN. FT.	PERMANENT STEEL CASING FOR 3'-6" Ø DRILLED PIER						142.8 LIN. FT.
▲ CSL TUBES						543.0 LIN FT.	▲ CSL TUBES						724.0 LIN FT.



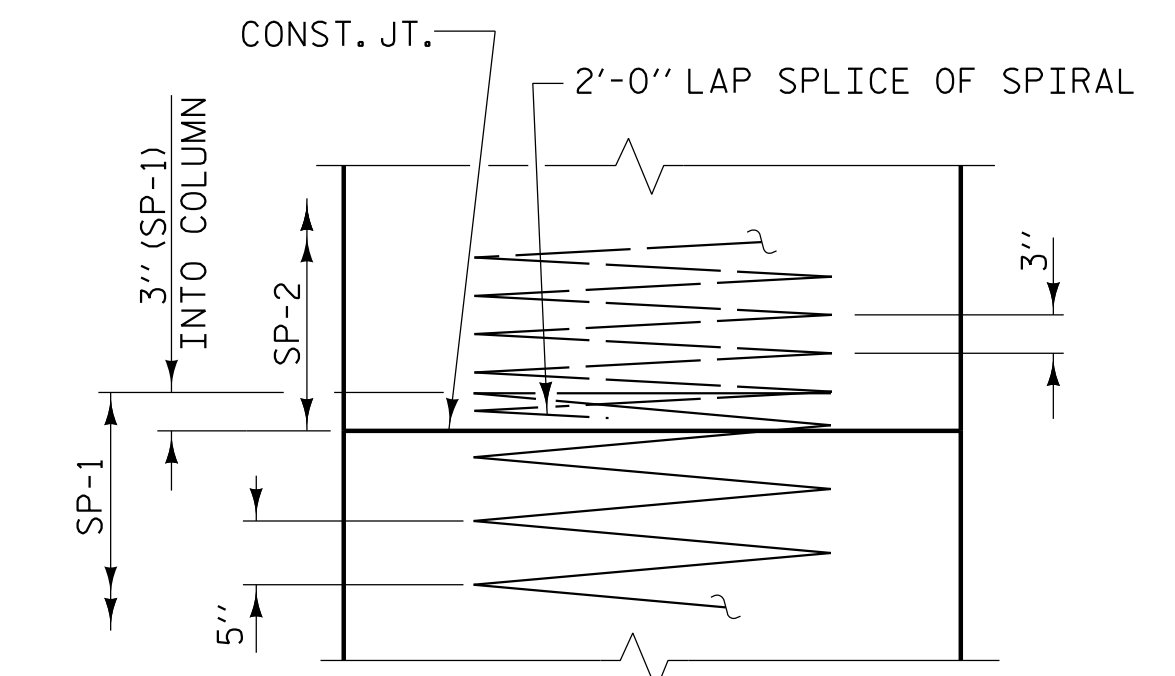
END ELEVATION



SECTION A-A



SECTION B-B



CONSTRUCTION JOINT DETAIL

PROJECT NO. U-5839
 HAYWOOD COUNTY
 STATION: 31+45.00 -L- POT

SHEET 4 OF 4

STATE OF NORTH CAROLINA DEPARTMENT OF TRANSPORTATION RALEIGH					
SUBSTRUCTURE BENT 2					
REVISIONS					
NO.	BY:	DATE:	NO.	BY:	DATE:
1			3		
2			4		
					SHEET NO. S2-40
					TOTAL SHEETS 49

PLANS PREPARED BY:
NV5
 NV5 ENGINEERS & CONSULTANTS, INC.
 3300 REGENCY PARKWAY, SUITE 100
 CARY, NC 27518
 P: 919.851.1912 www.NV5.com
 NC License # F-1333

DocuSigned by:

 BEB2398D9220470
 5/19/2023

DOCUMENT NOT CONSIDERED FINAL
 UNLESS ALL SIGNATURES COMPLETED

DRAWN BY: W. B. ALLEN DATE: 10/19
 CHECKED BY: Z. H. BROWN DATE: 11/19
 DESIGN ENGINEER OF RECORD: R. C. LARSON DATE: 2/23

DocuSigned by:

 BEB2398D9220470

5/17/2023 7:03:32 PM R:\Structures\Bent 2 over Richard Creek\VD U5839_SMU.BB_43086.dgn