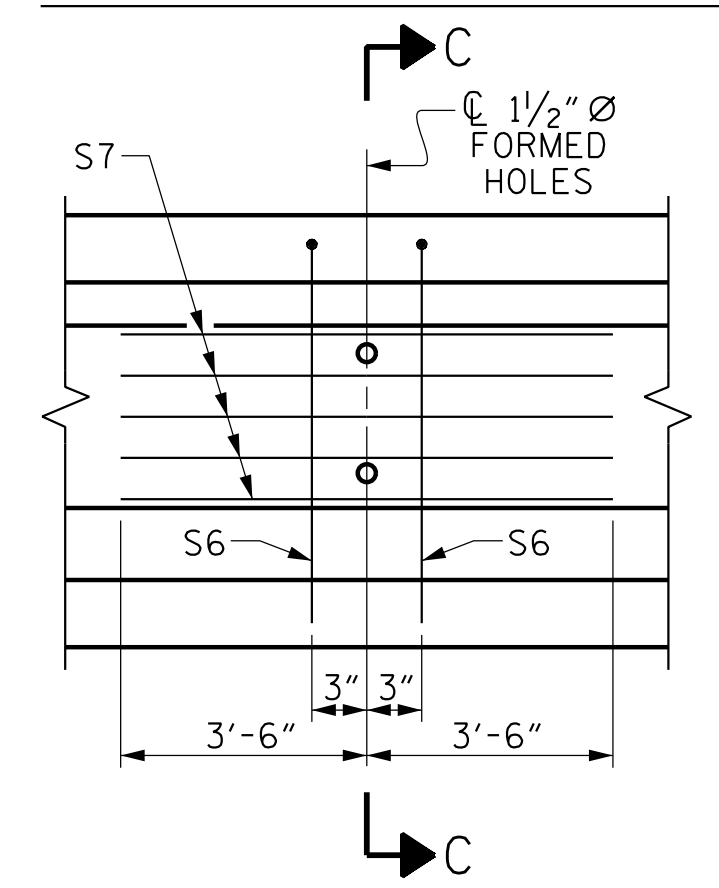


- FULLY BONDED STRAND
- ▲ BOND SHALL BE BROKEN ON THESE STRANDS FOR A DISTANCE OF 4'-0" FROM END OF GIRDER.
- ◎ BOND SHALL BE BROKEN ON THESE STRANDS FOR A DISTANCE OF 6'-0" FROM END OF GIRDER.

DEBONDING LEGEND



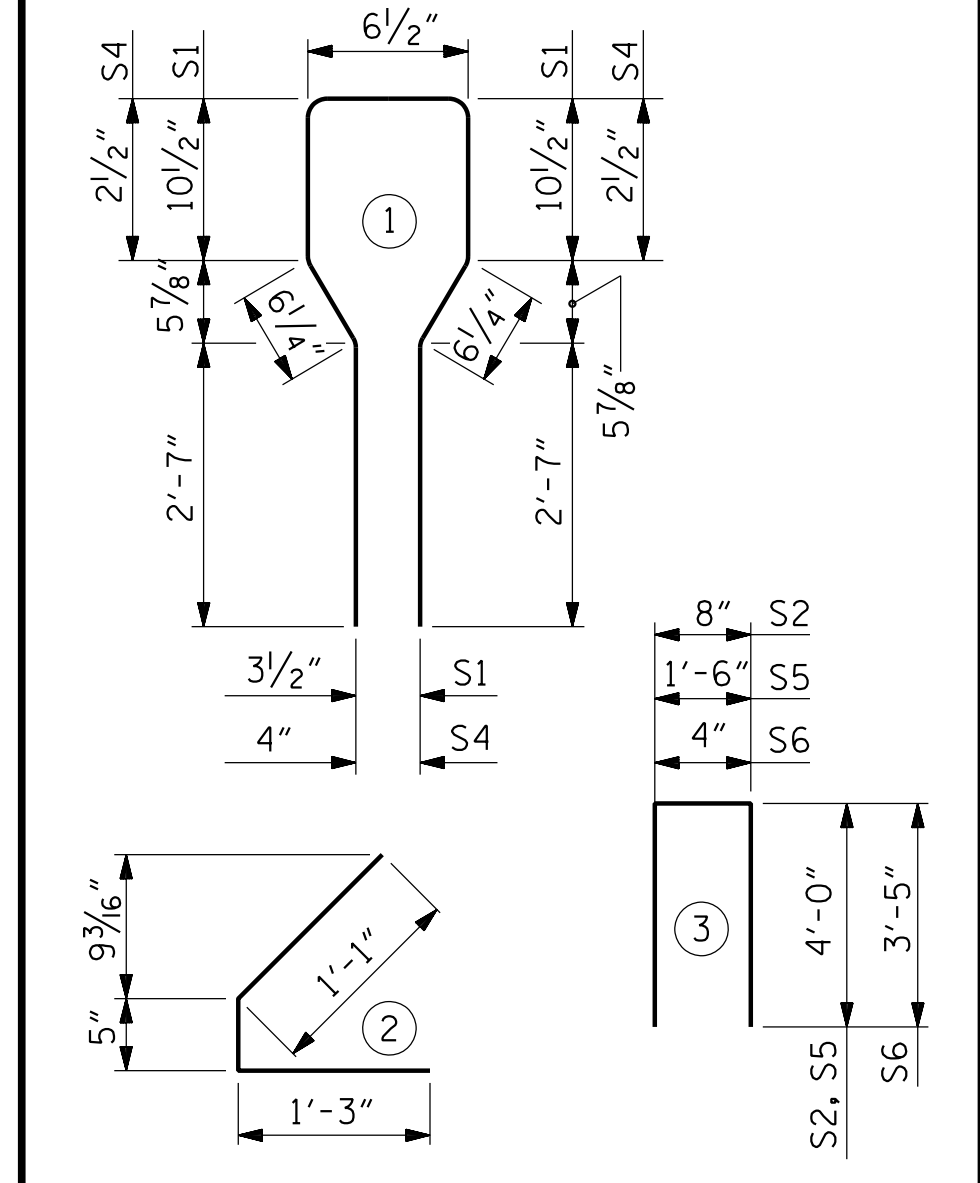
0.6" Ø L. R. GRADE 270 STRANDS

AREA (SQUARE INCHES)	ULTIMATE STRENGTH (LBS. PER STRAND)	APPLIED PRESTRESS (LBS. PER STRAND)
0.217	58,600	43,950

REINFORCING STEEL FOR ONE GIRDER

BAR	NUMBER	SIZE	TYPE	LENGTH	WEIGHT
S1	46	#4	1	8'-6"	261
S2	4	#4	3	8'-8"	23
S3	60	#4	2	2'-9"	110
S4	16	#6	1	7'-2"	172
S5	2	#4	3	9'-6"	13
S6	2	#5	3	7'-2"	15
S7	5	#4	STR	7'-0"	23

BAR TYPES  
ALL BAR DIMENSIONS ARE OUT-TO-OUT

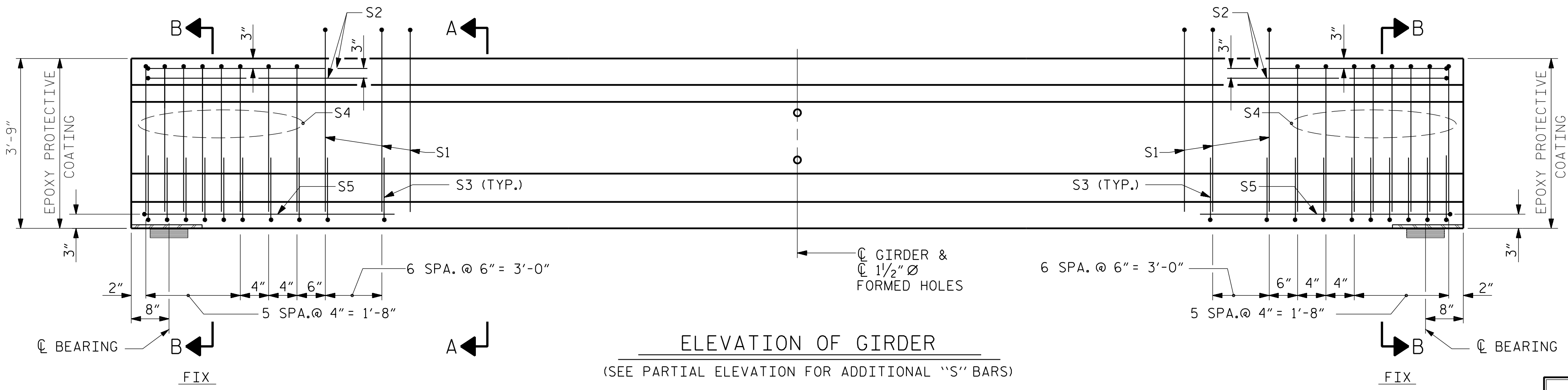
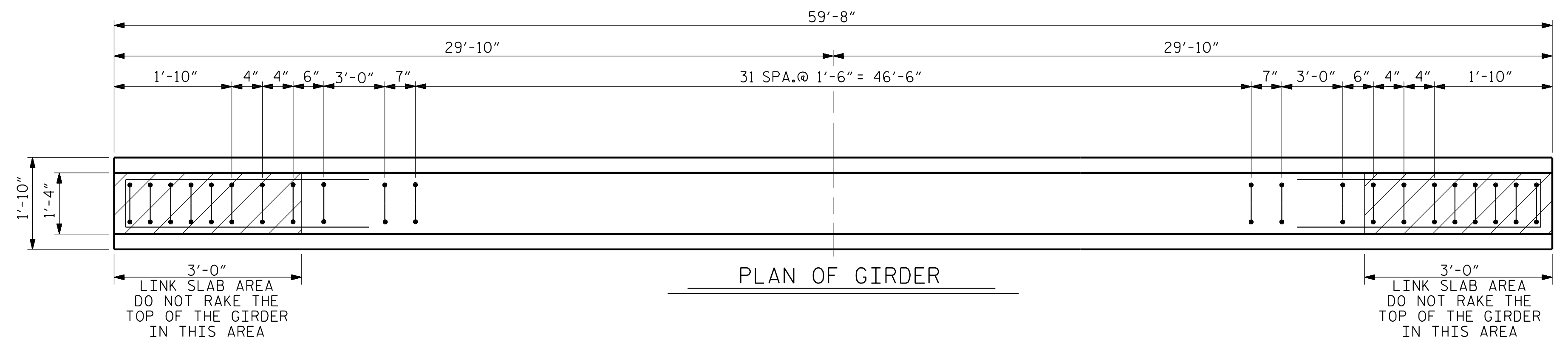


QUANTITIES FOR ONE GIRDER

	REINFORCING STEEL (LB.)	6500 PSI CONCRETE (C.Y.)	0.6" Ø L. R. STRANDS (No.)
GIRDERS 1 - 10	617	8.6	22

GIRDERS REQUIRED

NUMBER	LENGTH	TOTAL LENGTH
10	59'-8"	596'-8"



PROJECT NO. U-5839  
HAYWOOD COUNTY  
STATION: 31+45.00 -L- POT

SHEET 2 OF 4

STATE OF NORTH CAROLINA  
DEPARTMENT OF TRANSPORTATION  
RALEIGH

SUPERSTRUCTURE  
AASHTO TYPE III  
PRESTRESSED CONCRETE GIRDER  
FOR LINK SLAB (SPAN B)

REVISIONS

NO.	BY:	DATE:	NO.	BY:	DATE:
1			3		
2			4		

SHEET NO. S2-19  
TOTAL SHEETS 49

PLANS PREPARED BY:

**NV5**  
NV5 ENGINEERS & CONSULTANTS, INC.  
3300 REGENCY PARKWAY, SUITE 100  
CARY, NC 27518  
P: 919.851.1912 www.NV5.com  
NC License # F-1333

DocuSigned by:

ROBERT C. LARSON  
PROFESSIONAL SEAL  
14114  
EEB2398D9220470

5/19/2023

DOCUMENT NOT CONSIDERED FINAL  
UNLESS ALL SIGNATURES COMPLETED

5/17/2023 7:03:22 PM RA:\Structures\Bridges over Richland Creek\19 US939\_SML\_C2\_430186.dgn

DRAWN BY: W. B. ALLEN DATE: 7/19  
CHECKED BY: Z. H. BROWN DATE: 7/19  
DESIGN ENGINEER OF RECORD: R. C. LARSON DATE: 2/23

DocuSigned by:  
R. C. LARSON  
EEB2398D9220470