

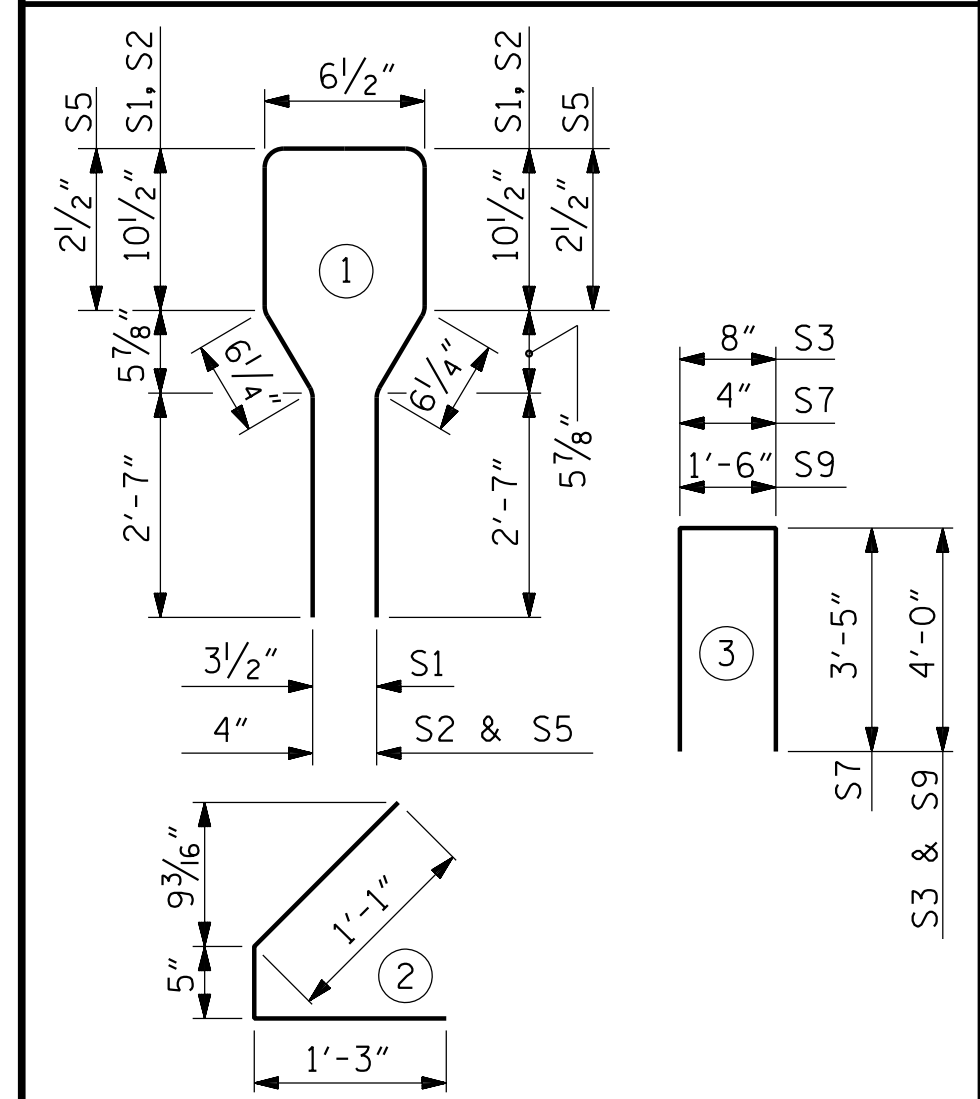
0.6" Ø L. R. GRADE 270 STRANDS		
AREA (SQUARE INCHES)	ULTIMATE STRENGTH (LBS. PER STRAND)	APPLIED PRESTRESS (LBS. PER STRAND)
0.217	58,600	43,950

REINFORCING STEEL FOR ONE GIRDER					
BAR	NUMBER	SIZE	TYPE	LENGTH	WEIGHT
S1	48	#4	1	8'-6"	273
S2	6	#6	1	8'-6"	77
S3	4	#4	3	8'-8"	23
S4	60	#4	2	2'-9"	110
S5	8	#6	1	7'-2"	86
*S6	8	#5	STR	3'-8"	31
S7	2	#5	3	7'-2"	15
S8	5	#4	STR	7'-0"	23
S9	1	#4	3	9'-6"	6
S10	1	#3	STR	1'-0"	1

\* NOTE: S6 BARS SHALL BE BENT BEFORE SHIPMENT. HEAT BENDING SHALL NOT BE ALLOWED.

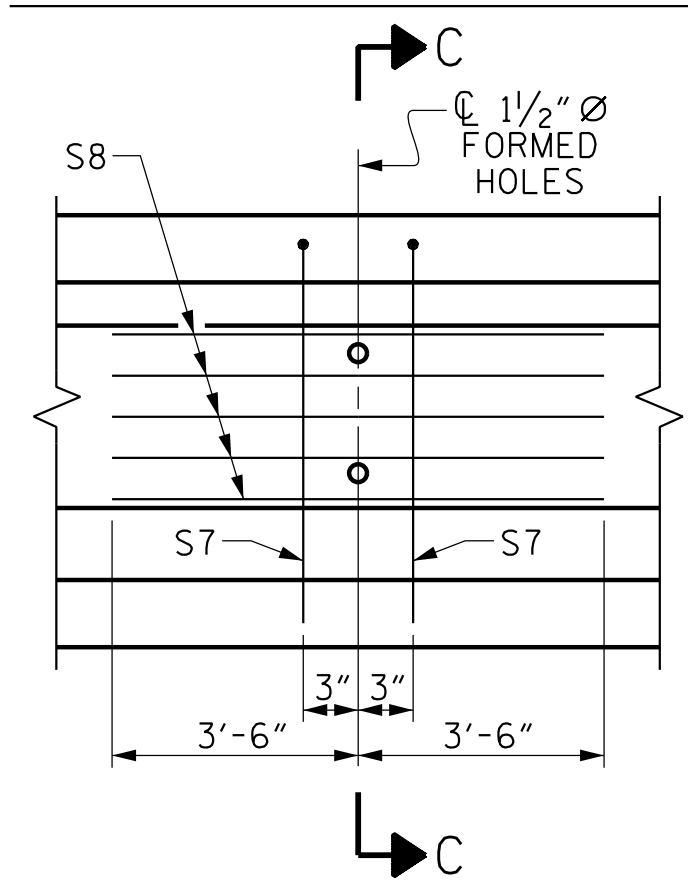
**BAR TYPES**

ALL BAR DIMENSIONS ARE OUT-TO-OUT



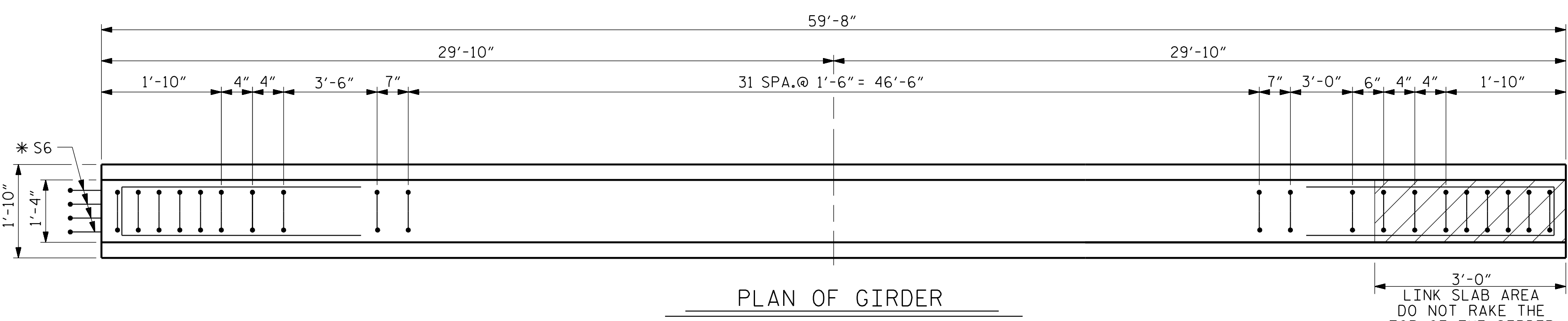
- FULLY BONDED STRAND
- ▲ BOND SHALL BE BROKEN ON THESE STRANDS FOR A DISTANCE OF 4'-0" FROM END OF GIRDER.
- ◎ BOND SHALL BE BROKEN ON THESE STRANDS FOR A DISTANCE OF 6'-0" FROM END OF GIRDER.

**DEBONDING LEGEND**



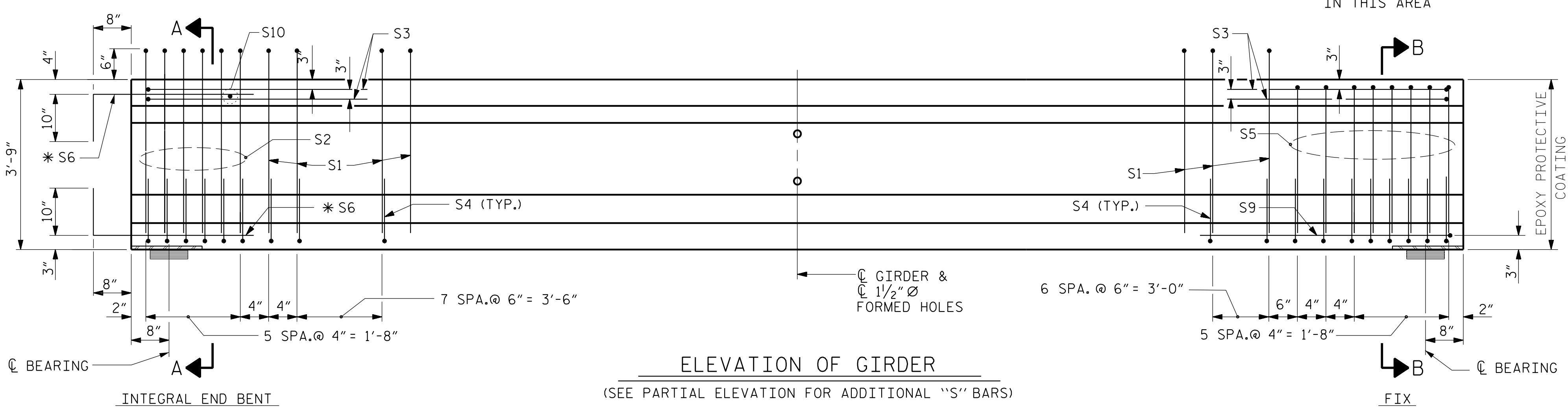
**PARTIAL ELEVATION**

SHOWING INTERMEDIATE DIAPHRAGM REINFORCING STEEL FOR ALL GIRDERS



**PLAN OF GIRDER**

3'-0" LINK SLAB AREA DO NOT RAKE THE TOP OF THE GIRDER IN THIS AREA



**ELEVATION OF GIRDER**

(SEE PARTIAL ELEVATION FOR ADDITIONAL "S" BARS)

**QUANTITIES FOR ONE GIRDER**

	REINFORCING STEEL LB.	6500 PSI CONCRETE C.Y.	0.6" Ø L. R. STRANDS No.
GIRDERS 1-10	645	8.6	22

**GIRDERS REQUIRED**

NUMBER	LENGTH	TOTAL LENGTH
20	59'-8"	1193'-4"

PROJECT NO. U-5839  
**HAYWOOD COUNTY**  
 STATION: 31+45.00 -L- POT

SHEET 1 OF 4

STATE OF NORTH CAROLINA  
 DEPARTMENT OF TRANSPORTATION  
 RALEIGH  
 SUPERSTRUCTURE  
 AASHTO TYPE III  
 PRESTRESSED CONCRETE GIRDER  
 FOR LINK SLAB  
 (SPANS A AND C)

REVISIONS						SHEET NO.
NO.	BY:	DATE:	NO.	BY:	DATE:	S2-18
1			3			TOTAL SHEETS
2			4			49

PLANS PREPARED BY:  
**NV5**  
 NV5 ENGINEERS & CONSULTANTS, INC.  
 3300 REGENCY PARKWAY, SUITE 100  
 CARY, NC 27518  
 P: 919.851.1912 www.NV5.com  
 NC License # F-1333

DocuSigned by:  
 NORTH CAROLINA PROFESSIONAL SEAL  
 ENGINEER  
 ROBERT C. LARSON  
 BEB2398D9220470  
 1414  
 5/19/2023

**DOCUMENT NOT CONSIDERED FINAL  
 UNLESS ALL SIGNATURES COMPLETED**

5/17/2023 7:03:52 PM RA:\Structures\Bridges over Richard Creek\18 UB939\_SML\_G\_43086.dgn

DRAWN BY: W. B. ALLEN DATE: 7/19  
 CHECKED BY: Z. H. BROWN DATE: 7/19  
 DESIGN ENGINEER OF RECORD: R. C. LARSON DATE: 2/23

DocuSigned by:  
 BEB2398D9220470