

**NOTES:**

SIDEWALK IN A CONTINUOUS UNIT SHALL NOT BE CAST UNTIL ALL SLAB CONCRETE IN THE UNIT HAS BEEN CAST AND HAS REACHED A MINIMUM COMPRESSIVE STRENGTH OF 3000 PSI.

ALL REINFORCING STEEL IN THE SIDEWALK SHALL BE EPOXY COATED.

NO SEPARATE PAYMENT SHALL BE MADE FOR MATERIALS, LABOR AND INCIDENTALS REQUIRED FOR THIS CONSTRUCTION OF CONCRETE SIDEWALK AND CONCRETE MEDIAN AS DETAILED ON BRIDGE SPANS AND APPROACH SLABS. ALL COSTS FOR THIS WORK SHALL BE INCLUDED IN THE UNIT PRICE BID FOR REINFORCED CONCRETE DECK SLAB.

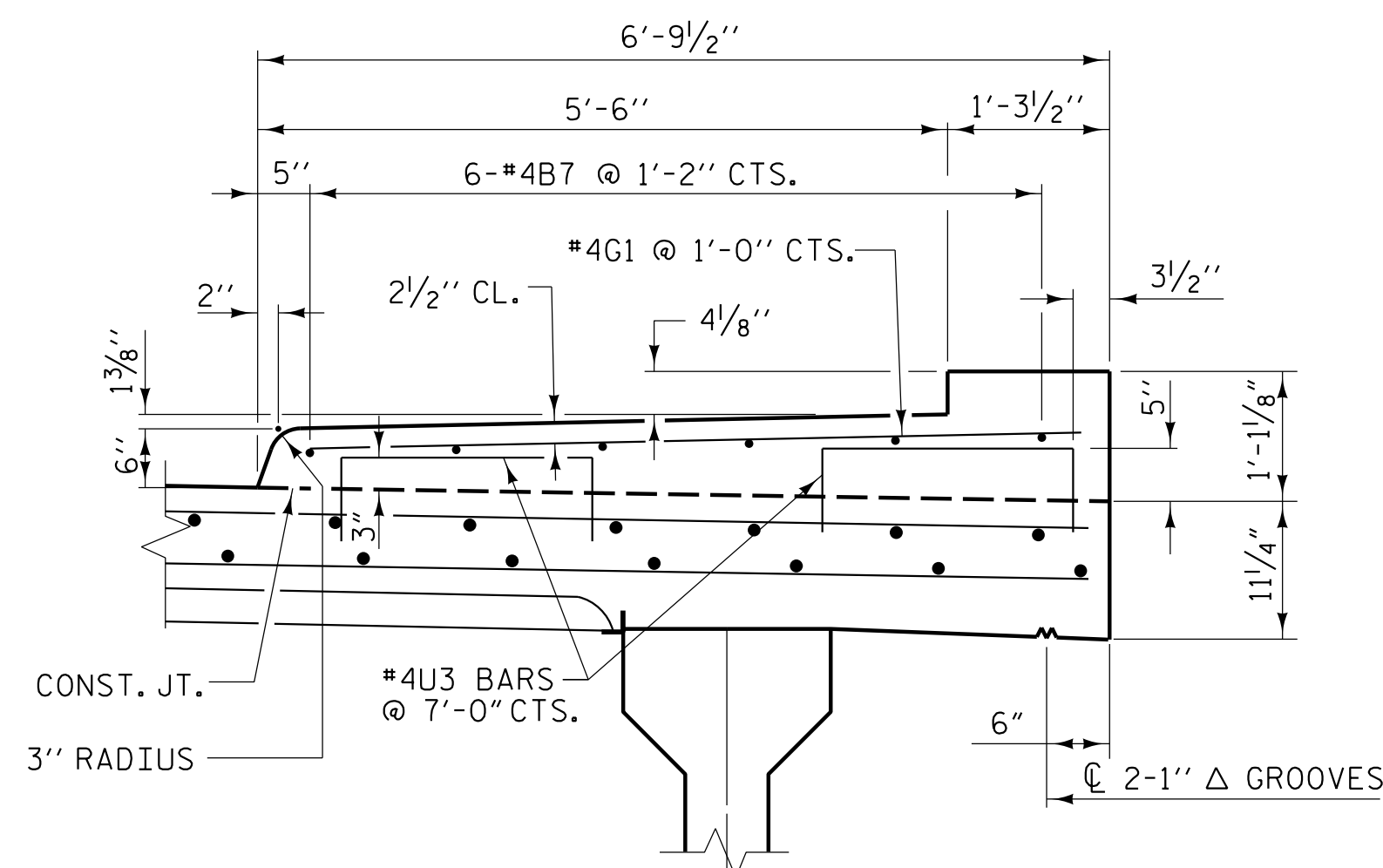
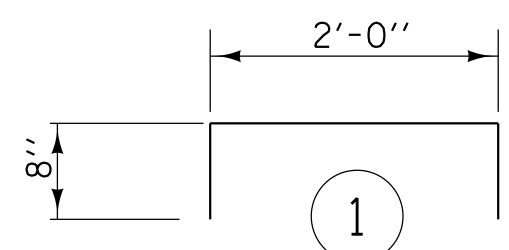
GROOVED CONTRACTION JOINTS 1/2" IN DEPTH, SHALL BE TOOLED IN ALL EXPOSED FACES OF SIDEWALK IN ACCORDANCE WITH ARTICLE 925-10(B) OF THE STANDARD SPECIFICATIONS, THE CONTRACTION JOINTS SHALL BE LOCATED AT A SPACING OF 8 FEET TO 10 FEET BETWEEN EXPANSION JOINTS. NO CONTRACTION JOINTS WILL BE REQUIRED FOR SEGMENTS LESS THAN 10 FEET IN LENGTH.

PROJECT NO. U-5839  
HAYWOOD COUNTY  
 STATION: 31+45.00 -L- POT

| STAGE I                     |     |      |      |        |                  | STAGE II                    |     |      |      |        |                  |
|-----------------------------|-----|------|------|--------|------------------|-----------------------------|-----|------|------|--------|------------------|
| BAR                         | NO. | SIZE | TYPE | LENGTH | WEIGHT           | BAR                         | NO. | SIZE | TYPE | LENGTH | WEIGHT           |
| * B7                        | 30  | #4   | STR  | 37'-6" | 752              | * B7                        | 30  | #4   | STR  | 37'-6" | 752              |
| * G1                        | 179 | #4   | STR  | 6'-0"  | 717              | * G1                        | 179 | #4   | STR  | 6'-0"  | 717              |
| * U3                        | 50  | #4   | 1    | 3'-4"  | 111              | * U3                        | 50  | #4   | 1    | 3'-4"  | 111              |
| * EPOXY COATED REINF. STEEL |     |      |      |        | 1580 LBS.        | * EPOXY COATED REINF. STEEL |     |      |      |        | 1580 LBS.        |
| CLASS AA CONCRETE           |     |      |      |        | ** 31.8 CU. YDS. | CLASS AA CONCRETE           |     |      |      |        | ** 31.8 CU. YDS. |

\* INDICATES EPOXY COATED REINF. STEEL  
 \*\* INCLUDES CONC. FOR END POSTS

**BAR TYPES**



**SECTION THRU SIDEWALK**

\*\* #4U3 BARS MAY BE PUSHED INTO GREEN CONCRETE AFTER SPAN HAS BEEN SCREEDED OFF.

PLANS PREPARED BY:

**NV5**

NV5 ENGINEERS & CONSULTANTS, INC.  
 3300 REGENCY PARKWAY, SUITE 100  
 CARY, NC 27518  
 P: 919.851.1912 www.NV5.com  
 NC License # F-1333

DocuSigned by:

*Robert C. Larson*

PROFESSIONAL ENGINEER  
 NORTH CAROLINA  
 BEB2398D8220470...  
 1414  
 ROBERT C. LARSON  
 5/19/2023

**DOCUMENT NOT CONSIDERED FINAL  
 UNLESS ALL SIGNATURES COMPLETED**

STATE OF NORTH CAROLINA  
 DEPARTMENT OF TRANSPORTATION  
 RALEIGH

SUPERSTRUCTURE

**SIDEWALK  
 PLAN AND DETAILS**

| REVISIONS |     |       |     |     |       | SHEET NO.    |
|-----------|-----|-------|-----|-----|-------|--------------|
| NO.       | BY: | DATE: | NO. | BY: | DATE: | S2-16        |
| 1         |     |       | 3   |     |       | TOTAL SHEETS |
| 2         |     |       | 4   |     |       | 49           |

DRAWN BY: W. B. ALLEN DATE: 5/19  
 CHECKED BY: Z. H. BROWN DATE: 7/19  
 DESIGN ENGINEER OF RECORD: R. C. LARSON DATE: 2/23

DocuSigned by:  
 BEB2398D8220470

5/17/2023 7:03:20 PM RA\Structures\Bridges over Richard Creek\6 U-5839-SMU-SW-43086.dgn