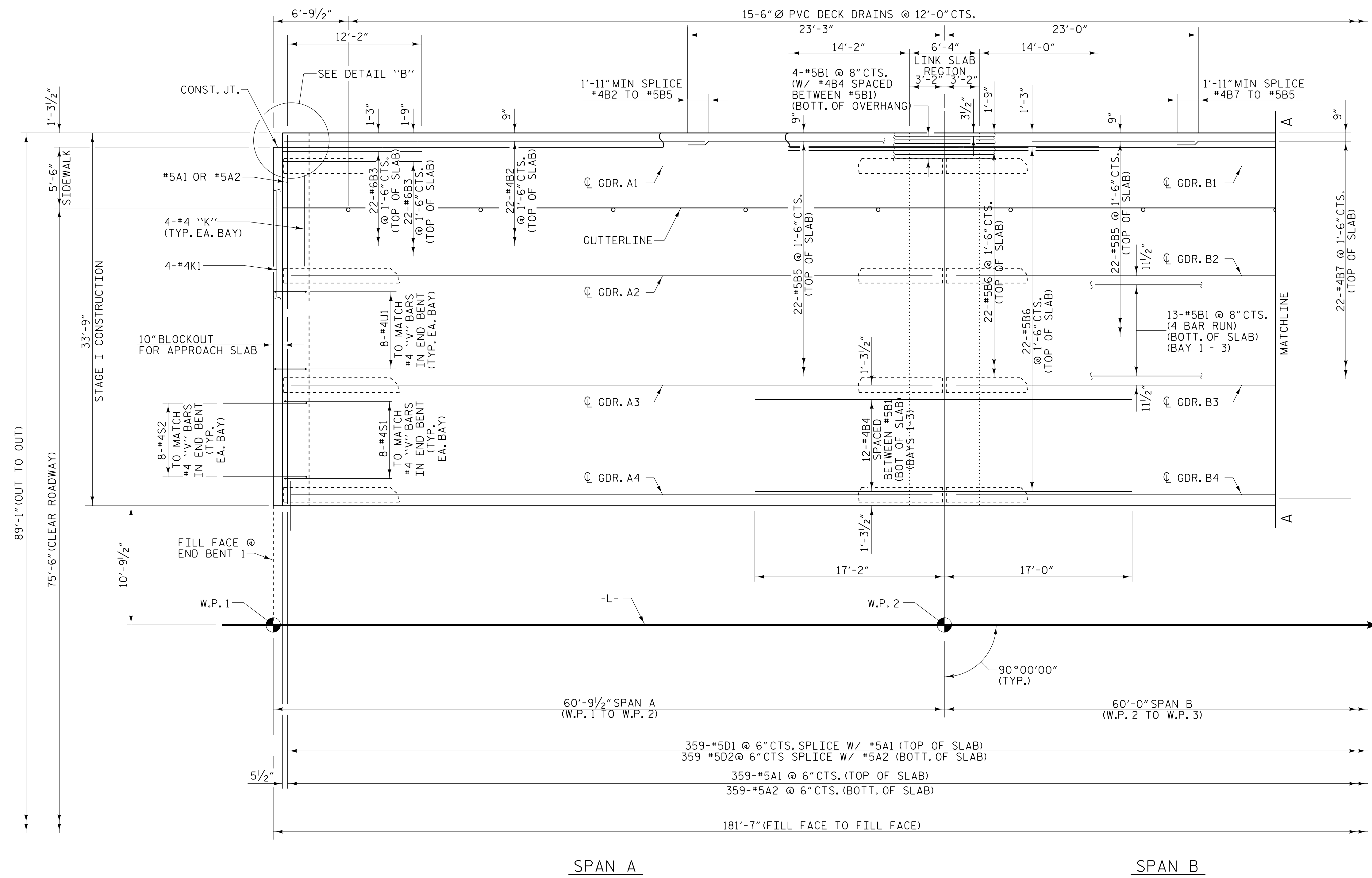


NOTE

FOR SIDEWALK AND REINFORCING STEEL, SEE "SIDEWALK PLAN AND DETAILS" SHEET.

FOR POUR SEQUENCE AND LOCATION OF TRANSVERSE CONSTRUCTION JOINTS, SEE "SUPERSTRUCTURE BILL OF MATERIALS."

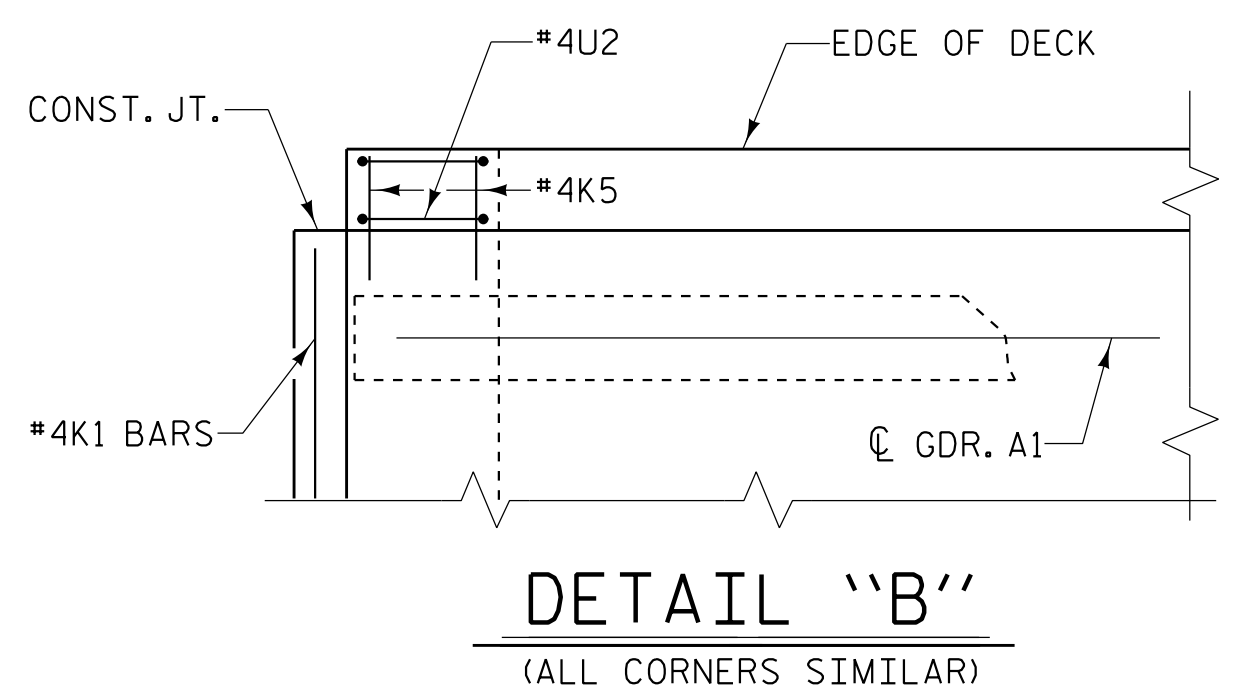
DOWELS SHALL BE PLACED IN THE SAME HORIZONTAL PLANE AS THE TOP AND BOTTOM SLAB REINFORCING STEEL.



SPAN A

SPAN B

PLAN OF SPANS A & B
STAGE I CONSTRUCTION



DETAIL "B"
(ALL CORNERS SIMILAR)

PLANS PREPARED BY:

NV|5

NV5 ENGINEERS & CONSULTANTS, INC.
3300 REGENCY PARKWAY, SUITE 100
CARY, NC 27518
P: 919.851.1912 www.NV5.com
NC License # F-1333

DocuSigned by:

Robert C. Larson

ROBERT C. LARSON
PROFESSIONAL ENGINEER
14114

PROJECT NO. U-5839
HAYWOOD COUNTY
STATION: 31+45.00 -L- POT

SHEET 1 OF 4

STATE OF NORTH CAROLINA
DEPARTMENT OF TRANSPORTATION
RALEIGH

SUPERSTRUCTURE
PLAN OF SPANS
STAGE I

REVISIONS						SHEET NO.
NO.	BY:	DATE:	NO.	BY:	DATE:	S2-11
1			3			TOTAL SHEETS
2			4			49

DRAWN BY : W. B. ALLEN DATE : 5/19
CHECKED BY : Z. H. BROWN DATE : 7/19
DESIGN ENGINEER OF RECORD: R. C. LARSON DATE : 2/23

DocuSigned by:

Robert C. Larson

ROBERT C. LARSON
PROFESSIONAL ENGINEER
14114

DOCUMENT NOT CONSIDERED FINAL
UNLESS ALL SIGNATURES COMPLETED

5/19/2023

5/17/2023 7:03:18 PM R:\Structures\Bridge over Richard Creek\U5839_SMU_S1_43086.dgn